

FAU ROUTE	SECTION	COUNTY	TOTAL SHEETS	SHEET NO.
8071	*	SANGAMON	425	107
STA.		TO STA.		
FED. ROAD DIST. NO.		ILLINOIS	FED. AID PROJECT	
(84-9) RS-6; (G)Z *				

**CURVE WR1**

WR PI1 PI STA. = 90+40.62  
 $\Delta = 0^\circ 46' 33''$  (LT)  
 D = 0' 57' 18"  
 R = 6,000.00'  
 T = 40.62'  
 L = 81.24'  
 E = 0.14'  
 e = N/A  
 T.R. = N/A  
 S.E. RUN = N/A

WR PC1 P.C. STA. = 90+00.00  
 WR PT1 P.T. STA. = 90+81.24

**CURVE WR2**

WR PI2 PI STA. = 91+21.86  
 $\Delta = 0^\circ 46' 33''$  (RT)  
 D = 0' 57' 18"  
 R = 6,000.00'  
 T = 40.62'  
 L = 81.24'  
 E = 0.14'  
 e = N/A  
 T.R. = N/A  
 S.E. RUN = N/A

WR PC2 P.C. STA. = 90+81.24  
 WR PT2 P.T. STA. = 91+62.48

**CURVE MAC3**

MAC PI3 PI STA. = 696+71.38  
 $\Delta = 9^\circ 51' 27''$  (LT)  
 D = 0' 56' 21"  
 R = 6,100.00'  
 T = 526.04'  
 L = 1,049.48'  
 E = 22.64'  
 e = N/A  
 T.R. = N/A  
 S.E. RUN = -----

MAC PC3 P.C. STA. = 691+45.34  
 MAC PT3 P.T. STA. = 701+94.82

**CURVE MAC4**

MAC PI4 PI STA. = 706+99.78  
 $\Delta = 9^\circ 27' 51''$  (RT)  
 D = 0' 56' 21"  
 R = 6,100.00'  
 T = 504.96'  
 L = 1,007.62'  
 E = 20.86'  
 e = N/A  
 T.R. = N/A  
 S.E. RUN = -----

MAC PC4 P.C. STA. = 701+94.82  
 MAC PT4 P.T. STA. = 712+02.44

**CURVE MAC5**

MAC PI5 PI STA. = 721+26.19  
 $\Delta = 25^\circ 44' 59''$  (RT)  
 D = 2' 51' 53"  
 R = 2,000.00'  
 T = 457.14'  
 L = 898.83'  
 E = 51.58'  
 e = 2.90%  
 T.R. = 65'  
 S.E. RUN = -----

MAC PC5 P.C. STA. = 716+69.05  
 MAC PT5 P.T. STA. = 725+67.88

**CURVE MAC6**

MAC PI6 PI STA. = 764+98.14  
 $\Delta = 6^\circ 31' 46''$  (LT)  
 D = 1' 25' 57"  
 R = 4,000.00'  
 T = 228.17'  
 L = 455.84'  
 E = 6.50'  
 e = N/A  
 T.R. = N/A  
 S.E. RUN = N/A

MAC PC6 P.C. STA. = 762+69.97  
 MAC PT6 P.T. STA. = 767+25.82

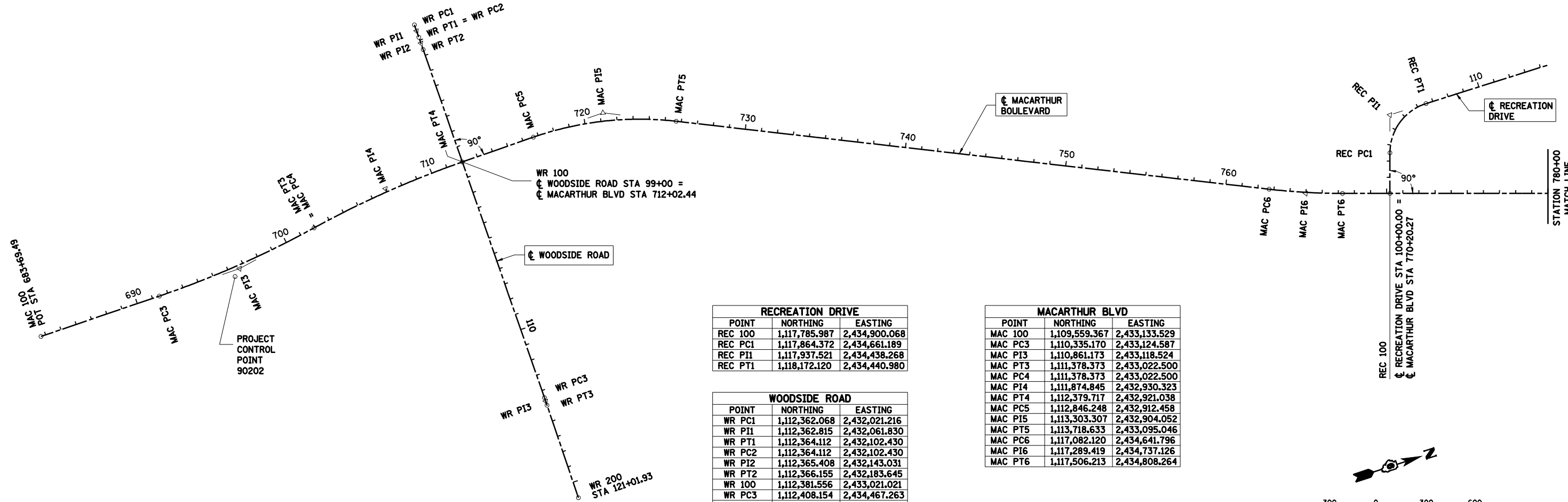
**CURVE REC1**

REC PI1 PI STA. = 104+86.03  
 $\Delta = 72^\circ 29' 44''$  (RT)  
 D = 17' 54' 18"  
 R = 320.00'  
 T = 234.61'  
 L = 404.89'  
 E = 76.79'  
 e = 2.00%  
 T.R. = 25'  
 S.E. RUN = 41'

REC PC1 P.C. STA. = 102+51.41  
 REC PT1 P.T. STA. = 106+56.30

**PROJECT CONTROL POINTS**

POINT	NORTHING	EASTING	NOTE:
90202	1,110,818.839	2,433,156.089	SOUTH OF WOODSIDE ROAD AND IRON BRIDGE ROAD
9213	1,129,552.891	2,439,038.813	(NOT SHOWN) LOCATED AT THE NORTH END OF MACARTHUR EXTENSION EASTERLY ALONG JUNCTION CIRCLE
THSH-57	1,127,939.422	2,433,827.670	(NOT SHOWN) LOCATED AT THE NORTH END OF MACARTHUR EXTENSION WESTERLY ALONG NORTH STREET
9905 (TH-5)	1,119,907.068	2,436,668.101	SHOWN ON THE FOLLOWING SHEET
2150 (BL 150m)	1,120,399.229	2,434,248.671	SHOWN ON THE FOLLOWING SHEET



**RECREATION DRIVE**

POINT	NORTHING	EASTING
REC 100	1,117,785.987	2,434,900.068
REC PC1	1,117,864.372	2,434,661.189
REC PI1	1,117,937.521	2,434,438.268
REC PT1	1,118,172.120	2,434,440.980

**WOODSIDE ROAD**

POINT	NORTHING	EASTING
WR PC1	1,112,362.068	2,432,021.216
WR PI1	1,112,362.815	2,432,061.830
WR PT1	1,112,364.112	2,432,102.430
WR PC2	1,112,364.112	2,432,102.430
WR PI2	1,112,365.408	2,432,143.031
WR PT2	1,112,366.155	2,432,183.645
WR 100	1,112,381.556	2,433,021.021
WR PC3	1,112,408.154	2,434,467.263
WR PI3	1,112,408.615	2,434,492.361
WR PT3	1,112,408.867	2,434,517.463
WR 200	1,112,414.932	2,435,122.674

**MACARTHUR BLVD**

POINT	NORTHING	EASTING
MAC 100	1,109,559.367	2,433,133.529
MAC PC3	1,110,335.170	2,433,124.587
MAC PI3	1,110,861.173	2,433,118.524
MAC PT3	1,111,378.373	2,433,022.500
MAC PC4	1,111,378.373	2,433,022.500
MAC PI4	1,111,874.845	2,432,930.323
MAC PT4	1,112,379.717	2,432,921.038
MAC PC5	1,112,846.248	2,432,912.458
MAC PI5	1,113,303.307	2,432,904.052
MAC PT5	1,113,718.633	2,433,095.046
MAC PC6	1,117,082.120	2,434,641.796
MAC PI6	1,117,289.419	2,434,737.126
MAC PT6	1,117,506.213	2,434,808.264

**CURVE WR3**

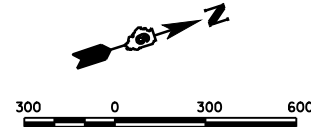
WR PI3 PI STA. = 114+71.59  
 $\Delta = 0^\circ 28' 46''$  (RT)  
 D = 0' 57' 18"  
 R = 6,000.00'  
 T = 25.10'  
 L = 50.21'  
 E = 0.05'  
 e = N/A  
 T.R. = N/A  
 S.E. RUN = N/A

WR PC3 P.C. STA. = 114+46.49  
 WR PT3 P.T. STA. = 114+96.69

COORDINATES BASED ON THE ILLINOIS STATE PLANE COORDINATE SYSTEM NAD83(97) WEST ZONE

ALL DISTANCES ARE GRID DISTANCES UNLESS OTHERWISE NOTED. COMBINATION FACTOR 0.99993923

ELEVATIONS BASED ON THE NORTH AMERICAN VERTICAL DATUM OF 1988 (NAVD88)



**REVISIONS**

NAME	DATE

ILLINOIS DEPARTMENT OF TRANSPORTATION  
 CENTERLINE GEOMETRICS RDWY -1  
 FAI-72, MACARTHUR BLVD  
 SECTION  
 (84-9) RS-6; (G)Z  
 SANGAMON COUNTY, ILLINOIS

SCALE: VERT. DATE: Mar-20-2008 08:25:45AM  
 HORIZ. DATE: Mar-20-2008 08:25:45AM  
 DRAWN BY: CLG  
 CHECKED BY: JAD



Mar-20-2008 08:25:45AM  
 \*FILE\*

LAYOUT: CLG 09/17/01  
 DRAWN: CLG 09/17/01  
 REVIEWED: JMM 09/17/01