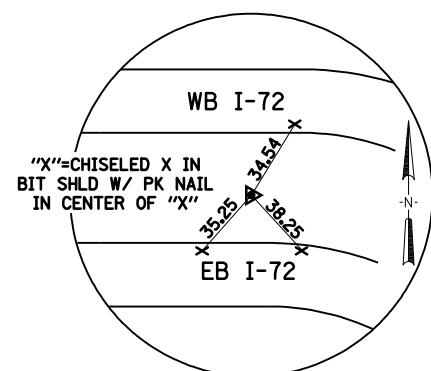
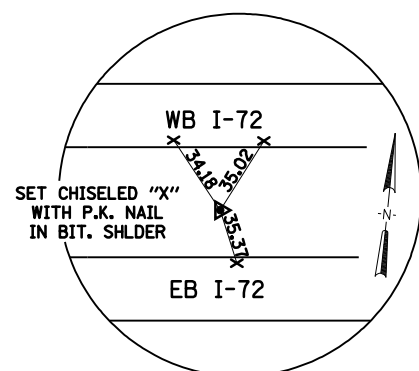


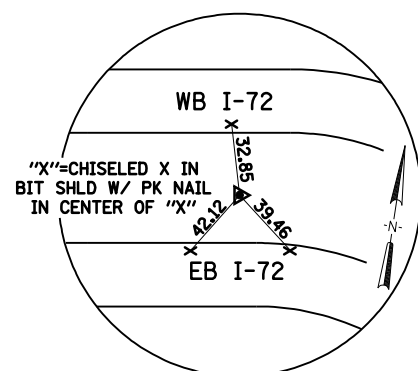
FAU ROUTE	SECTION	COUNTY	TOTAL SHEETS	SHEET NO.
8071	*	SANGAMON	425	114
STA.		TO STA.		
FED. ROAD DIST. NO.	ILLINOIS	FED. AID PROJECT		
(84-9) RS-6; (G)Z *				



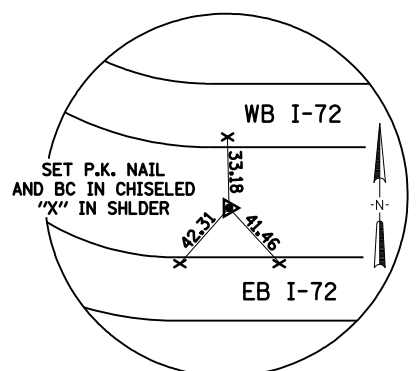
P.O.T. STA. EQUATION
541+05.03 BK =
596+30.74 AH



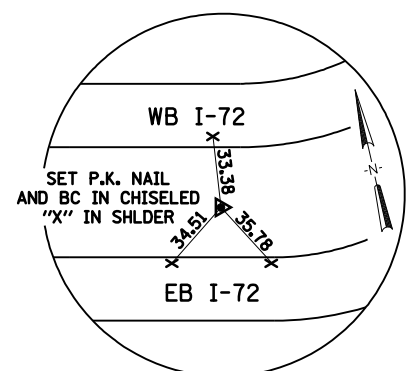
P.O.T. STA. 543+73.76
SET #4 REBAR
WITH IDOT CAP



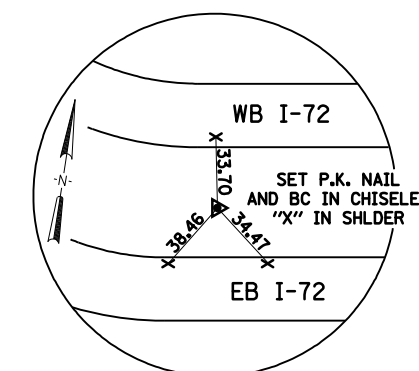
P.C. STA. 578+99.07
SET #4 REBAR
WITH IDOT CAP



P.T. STA. 589+32.96
SET #4 REBAR
WITH IDOT CAP



P.C. STA. 595+62.07
SET #4 REBAR
WITH IDOT CAP



P.T. STA. 618+12.07
SET #4 REBAR
WITH IDOT CAP

BENCHMARKS

IDOT BM 15: CHISELED SQUARE AT THE SOUTHEAST QUADRANT OF THE INTERSECTION OF WEST GRAND AVENUE AND HAZEL DELL ROAD. BENCHMARK IS LOCATED 33 FEET SOUTH OF THE CENTERLINE OF HAZEL DELL ROAD ON A HEADWALL OF A CONCRETE PIPE CULVERT. NAVD88 EL. 602.47
NORTHING 1,120,384.63 EASTING 2,437,006.15
RAMP C STA 44+40.4, 393.1' RT

IDOT BM 80: CHISELED CROSS ON THE CENTER BOLT OF THE EAST LEG OF AN IRON SIGN TRUSS OVER THE EAST BOUND LANE OF INTERSTATE 72. BENCHMARK IS LOCATED 1.62 MILES EAST OF IL ROUTE 4. NAVD88 EL. 601.28
NORTHING 1,120,179.07 EASTING 2,434,606.61
I-72 STA 586+05.0, 2.2' RT

IDOT BM 91: FOUND RAILROAD SPIKE IN WEST FACE OF POWER POLE ALONG EAST SIDE OF WEST GRAND AVENUE AT CENTRE STREET INTERSECTION. NAVD88 EL. 602.94
NORTHING 1,120,179.07 EASTING 2,436,741.98
CENTRE ST STA 10+18.8, 13.3' RT

IDOT BM 92: A RAILROAD SPIKE IN WEST FACE OF POWER POLE ON WEST SIDE OF BIKE PATH 2ND POLE SOUTH OF OLD RAILROAD BRIDGE, 1 MILE NORTH FROM HAZEL DELL ROAD AND WEST GRAND AVENUE INTERSECTION. NAVD88 EL. 607.81
NORTHING 1,125,733.20 EASTING 2,436,760.70
MAC ARTHUR STA 852+48.7, 330.3' LT

IDOT BM 93: A RAILROAD SPIKE ON EAST FACE OF POWER POLE ON WEST SIDE OF BIKE PATH ±0.9 MILES NORTH OF INTERSECTION HAZEL DELL ROAD AND WEST GRAND AVENUE. NAVD88 EL. 607.14
NORTHING 1,125,284.80 EASTING 2,436,775.20
MAC ARTHUR STA 847+78.4, 229.1' LT

IDOT BM 111: FOUND RAILROAD SPIKE IN WEST FACE OF POWER POLE ON WEST SIDE OF BIKE PATH AND EAST SIDE OF WEST GRAND AVENUE. FIRST POLE NORTH OF OLD RAILROAD BRIDGE. NAVD88 EL. 605.68
NORTHING 1,126,176.80 EASTING 2,436,752.80
MAC ARTHUR STA 857+33.2, 371.7' LT

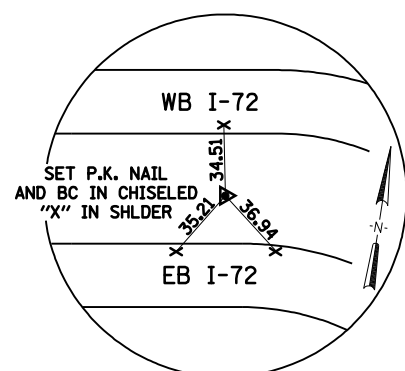
IDOT BM 374: RAILROAD SPIKE IN POWER POLE WEST OF A BIKE PATH AND SOUTHEAST OF RECREATION DRIVE. BENCHMARK IS LOCATED 0.81 MILE SOUTH OF THE INTERSECTION OF WEST GRAND AVENUE AND HAZEL DELL ROAD. NAVD88 EL. 604.61
NORTHING 1,117,229.60 EASTING 2,435,645.80
MAC ARTHUR STA 792+02.6, 1025.0 LT

IDOT BM 0150: DISK IN MONUMENT VAULT ON SURVEY CALIBRATION BASELINE. BENCHMARK IS LOCATED 13 FEET NORTH OF THE CENTERLINE OF HAZEL DELL ROAD AND 0.5 MILE WEST OF THE INTERSECTION HAZEL DELL ROAD AND WEST GRAND AVENUE. NAVD88 EL. 600.47
NORTHING 1,120,399.229 EASTING 2,434,248.671
RAMP D STA 54+90.4, 72.1 RT

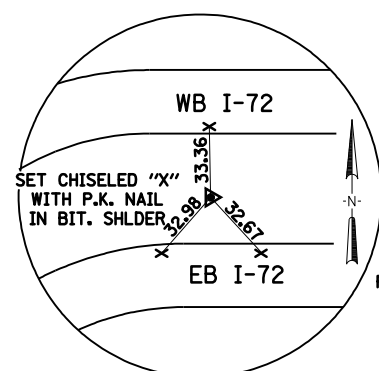
REVISIONS	
NAME	DATE

ILLINOIS DEPARTMENT OF TRANSPORTATION
SURVEY TIES & BENCHMARKS
FAI-72, MACARTHUR BLVD
SECTION
(84-9) RS-6; (G)Z
SANGAMON COUNTY, ILLINOIS

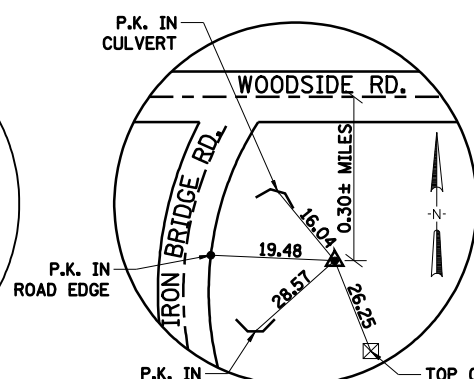
SCALE: VERT. HORIZ.
DATE: Mar-20-2008 08:26:05AM
DRAWN BY: JAP
CHECKED BY: GCR



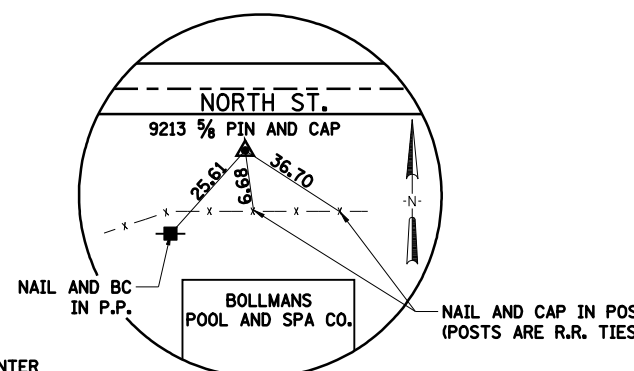
P.C. STA. 622+87.07
SET #4 REBAR
WITH IDOT CAP



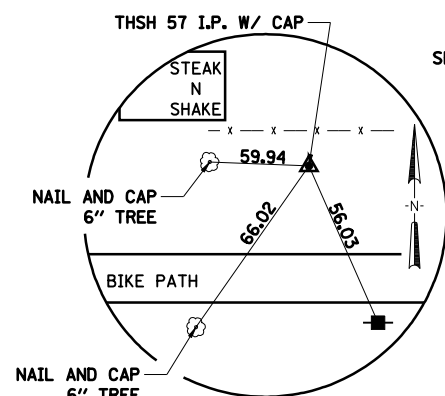
P.T. STA. 635+79.29 BK =
P.O.T. STA. 634+03.49 AH
SET #4 REBAR
WITH IDOT CAP



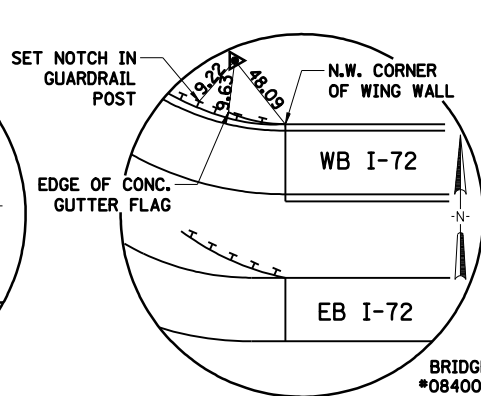
PROJECT CONTROL POINT
90202
#5 REBAR
WITH IDOT CAP



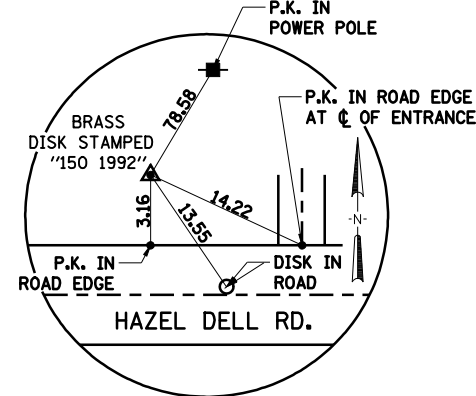
PROJECT CONTROL POINT
9213



PROJECT CONTROL POINT
THSH-57



PROJECT CONTROL POINT
9905 (TH-5)
#5 REBAR



PROJECT CONTROL POINT
2150 (150 CALIBRATION BASELINE)
BRASS DISK IN CONCRETE VAULT



Mar-20-2008 08:26:05AM
FILE

LAYOUT	CLG	09/17/07
DRAWN	CLG	09/17/07
REVIEWED	JMM	09/17/07