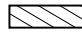
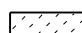


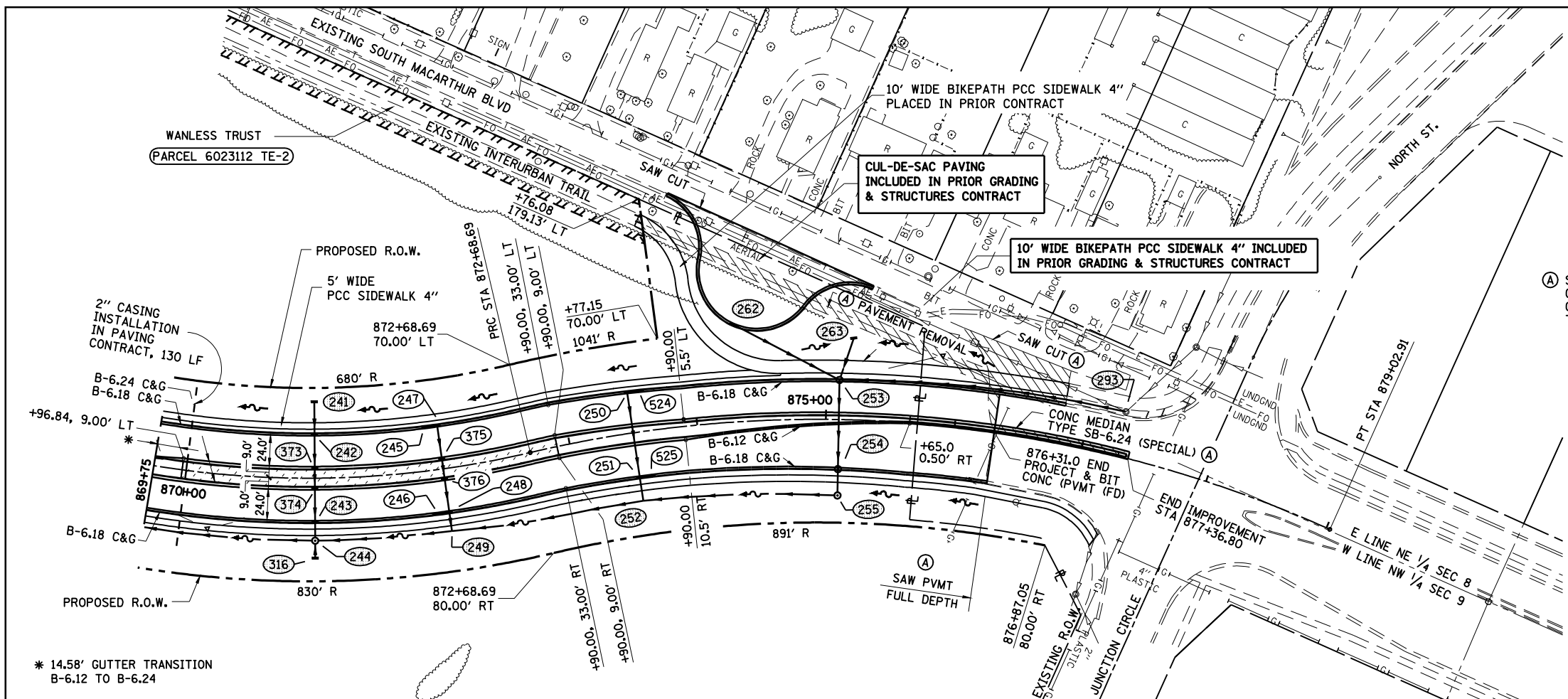
FAU ROUTE	SECTION	COUNTY	TOTAL SHEETS	SHEET NO.
8071	*	SANGAMON	425	131
STA. TO STA.		ILLINOIS FED. AID PROJECT		
FED. ROAD DIST. NO.		(84-9) RS-6; IGZ *		

LEGEND

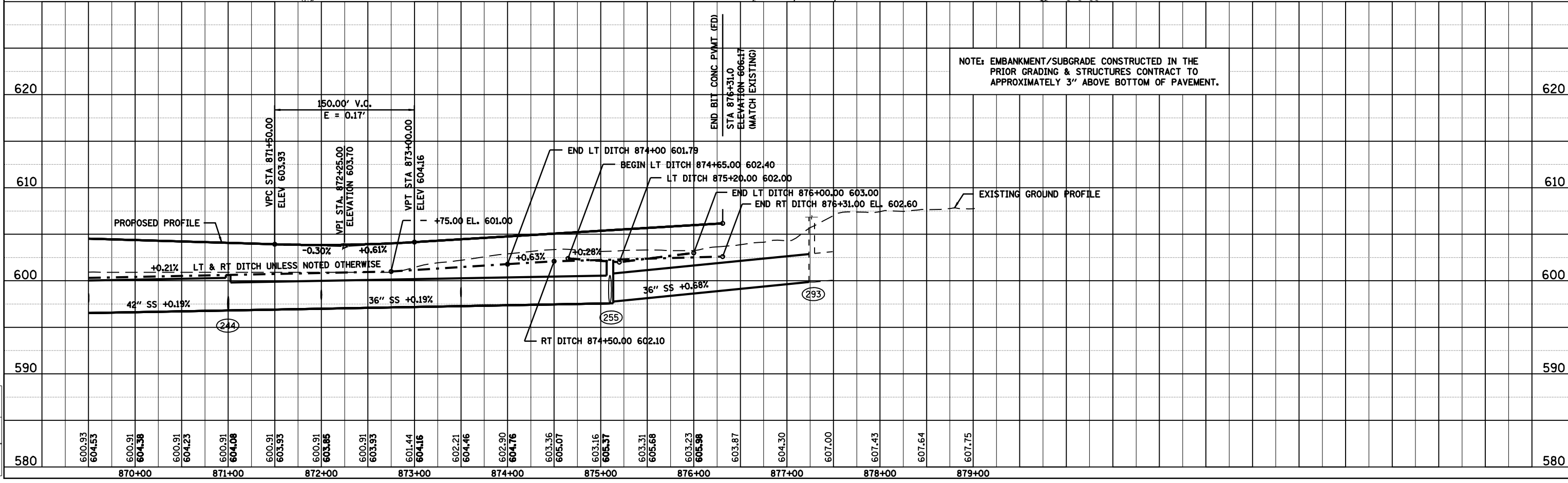
-  LIMITS OF REMOVAL
-  SODDING SALT TOLERANT

(A) SAW CUT AND PAVEMENT REMOVAL REQUIRED FOR CONSTRUCTION OF CONCRETE MEDIAN STA 876+31.0 TO STA 877+36.80 INCLUDED IN PAVING CONTRACT. ALL OTHER SAW CUTS AND PAVEMENT REMOVAL SHOWN ON THIS SHEET WHERE INCLUDED IN PRIOR GRADING & STRUCTURES CONTRACT.

(XX) DRAINAGE STRUCTURE CONSTRUCTED IN THE PRIOR GRADING & STRUCTURES CONTRACT. SEE DRAINAGE & STORM SEWER SCHEDULES.
 THE PRIOR GRADING & STRUCTURES CONTRACT INCLUDED ALL CULVERT REMOVALS, FILLING OF EXISTING CULVERTS, PLACEMENT OF RIPRAP AND PIPE CULVERTS UNLESS NOTED OTHERWISE.



* 14.58' GUTTER TRANSITION B-6.12 TO B-6.24



NOTE: EMBANKMENT/SUBGRADE CONSTRUCTED IN THE PRIOR GRADING & STRUCTURES CONTRACT TO APPROXIMATELY 3" ABOVE BOTTOM OF PAVEMENT.

DATE	BY

© Copyright Hanson Professional Services Inc. 2008
HANSON
 SURVEYED, PLOTTED, CHECKED, DATE
 PLAN, NOTE BOOK, NO. OF WAY CHECKED, DATE FILE NAME

DATE	BY

LAYOUT	CLG	09/17/01
DRAWN	CLG	09/17/01
REVIEWED	JMM	09/17/01