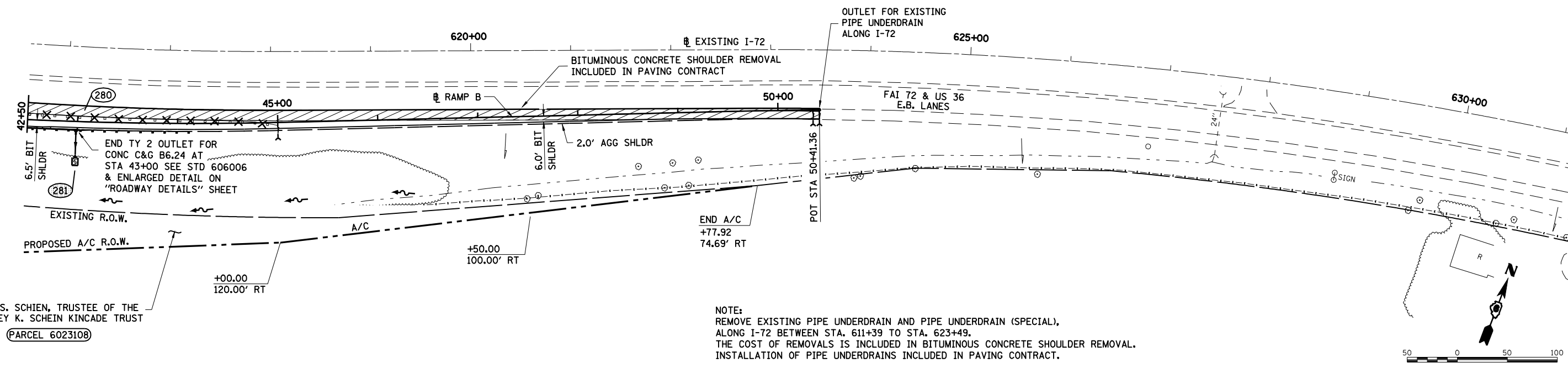


FAU ROUTE	SECTION	COUNTY	TOTAL SHEETS	SHEET NO.
8071	*	SANGAMON	425	141
STA. 8071		TO STA. 8072		
FED. ROAD DIST. NO.		ILLINOIS	FED. AID PROJECT	
(84-9) RS-6; IGZ *				

(XX) DRAINAGE STRUCTURE CONSTRUCTED IN THE PRIOR GRADING & STRUCTURES CONTRACT. SEE DRAINAGE & STORM SEWER SCHEDULES.

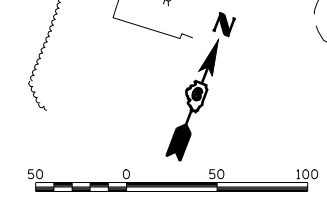
THE PRIOR GRADING & STRUCTURES CONTRACT INCLUDED ALL CULVERT REMOVALS, FILLING OF EXISTING CULVERTS, PLACEMENT OF RIPRAP AND PIPE CULVERTS UNLESS NOTED OTHERWISE.

I-72 PAVING & SHOULDER WORK ON THIS SHEET INCLUDED IN PAVING CONTRACT



CINDA S. SCHIEN, TRUSTEE OF THE COURTNEY K. SCHEIN KINCADE TRUST
 (PARCEL 6023108)

NOTE: REMOVE EXISTING PIPE UNDERDRAIN AND PIPE UNDERDRAIN (SPECIAL), ALONG I-72 BETWEEN STA. 611+39 TO STA. 623+49. THE COST OF REMOVALS IS INCLUDED IN BITUMINOUS CONCRETE SHOULDER REMOVAL. INSTALLATION OF PIPE UNDERDRAINS INCLUDED IN PAVING CONTRACT.



PLAN	SURVEYED	BY	DATE
	PLOTTED		
	CHECKED		
	NO. OF WAY CHECKED		
	CADD FILE NAME		



PROFILE	SURVEYED	BY	DATE
	PLOTTED		
	CHECKED		
	NO. OF STRUCTURE NOTATIONS CHKD		

LAYOUT	CLG	09/17/01	Mar-20-2008 08:31:54AM
DRAWN	CLG	09/17/01	
REVIEWED	JMM	09/17/01	\$FILES

