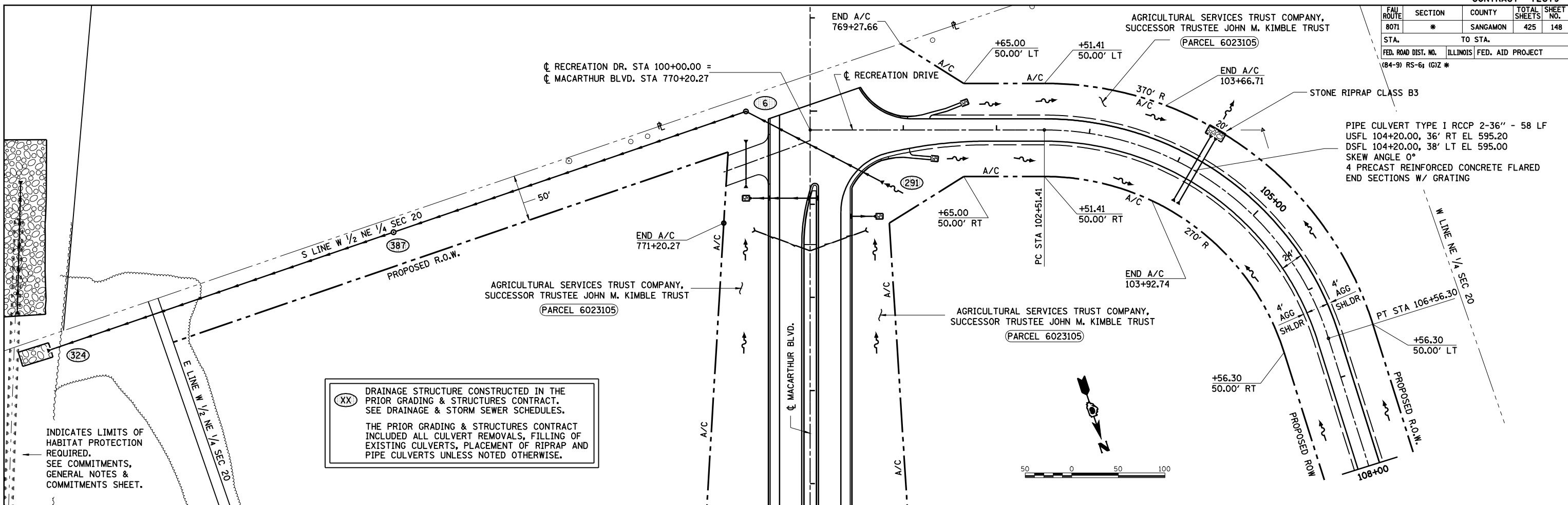


| FAU ROUTE           | SECTION | COUNTY                    | TOTAL SHEETS | SHEET NO. |
|---------------------|---------|---------------------------|--------------|-----------|
| 8071                | *       | SANGAMON                  | 425          | 148       |
| STA.                |         | TO STA.                   |              |           |
| FED. ROAD DIST. NO. |         | ILLINOIS FED. AID PROJECT |              |           |
| (84-9) RS-6; IGZ *  |         |                           |              |           |



(XX) DRAINAGE STRUCTURE CONSTRUCTED IN THE PRIOR GRADING & STRUCTURES CONTRACT. SEE DRAINAGE & STORM SEWER SCHEDULES.

THE PRIOR GRADING & STRUCTURES CONTRACT INCLUDED ALL CULVERT REMOVALS, FILLING OF EXISTING CULVERTS, PLACEMENT OF RIPRAP AND PIPE CULVERTS UNLESS NOTED OTHERWISE.

INDICATES LIMITS OF HABITAT PROTECTION REQUIRED. SEE COMMITMENTS, GENERAL NOTES & COMMITMENTS SHEET.

| PLAN | DATE |
|------|------|
|      |      |
|      |      |
|      |      |
|      |      |

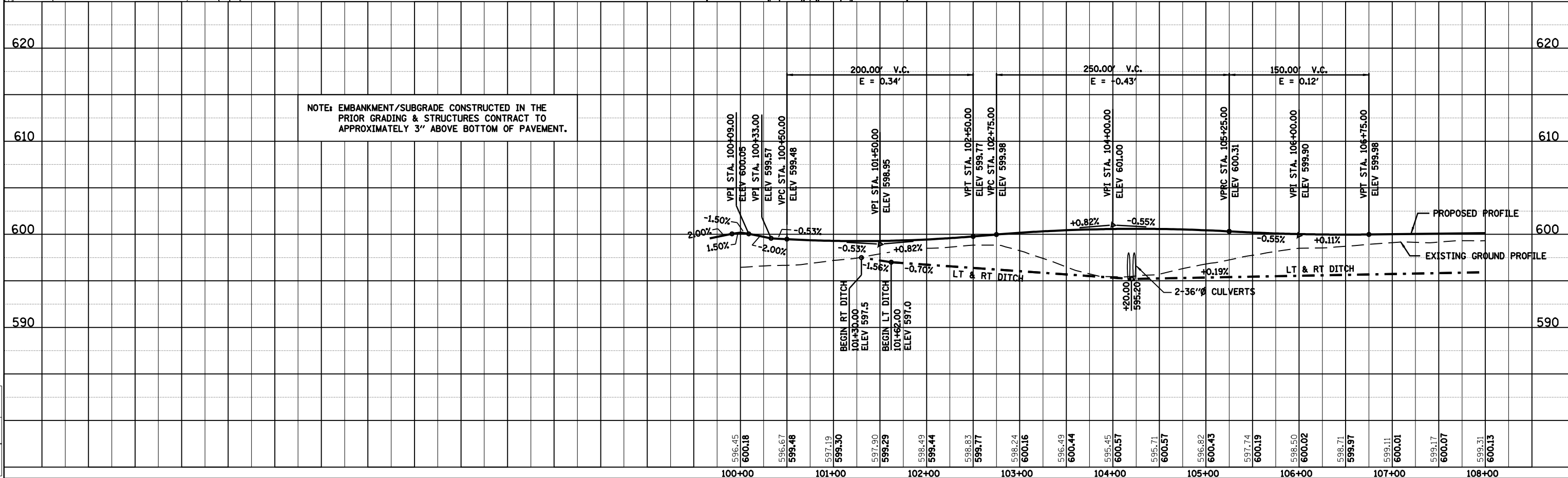
© Copyright Hanson Professional Services Inc. 2008  
**HANSON**  
 SURVEYED, PLOTTED, CHECKED, BY, DATE  
 NOTE BOOK NO. OF WAY CHECKED  
 NO. CAD FILE NAME

| PROFILE | DATE |
|---------|------|
|         |      |
|         |      |
|         |      |
|         |      |

NOTE: EMBANKMENT/SUBGRADE CONSTRUCTED IN THE PRIOR GRADING & STRUCTURES CONTRACT TO APPROXIMATELY 3" ABOVE BOTTOM OF PAVEMENT.

NOTE: STRUCTURE NOTATIONS CHKD

LAYOUT DRAWN: CLG 09/17/01  
 REVIEWED: JMM 09/17/01  
 Mar-20-2008 06:33:28AM \$FILE\$



RECREATION DRIVE STA. 100+00 TO STA. 108+00