

FAU ROUTE	SECTION	COUNTY	TOTAL SHEETS	SHEET NO.
8071	*	SANGAMON	425	152
STA. TO STA.		ILLINOIS FED. AID PROJECT		
FED. ROAD DIST. NO.		(84-9) RS-6; IGZ *		

LEGEND

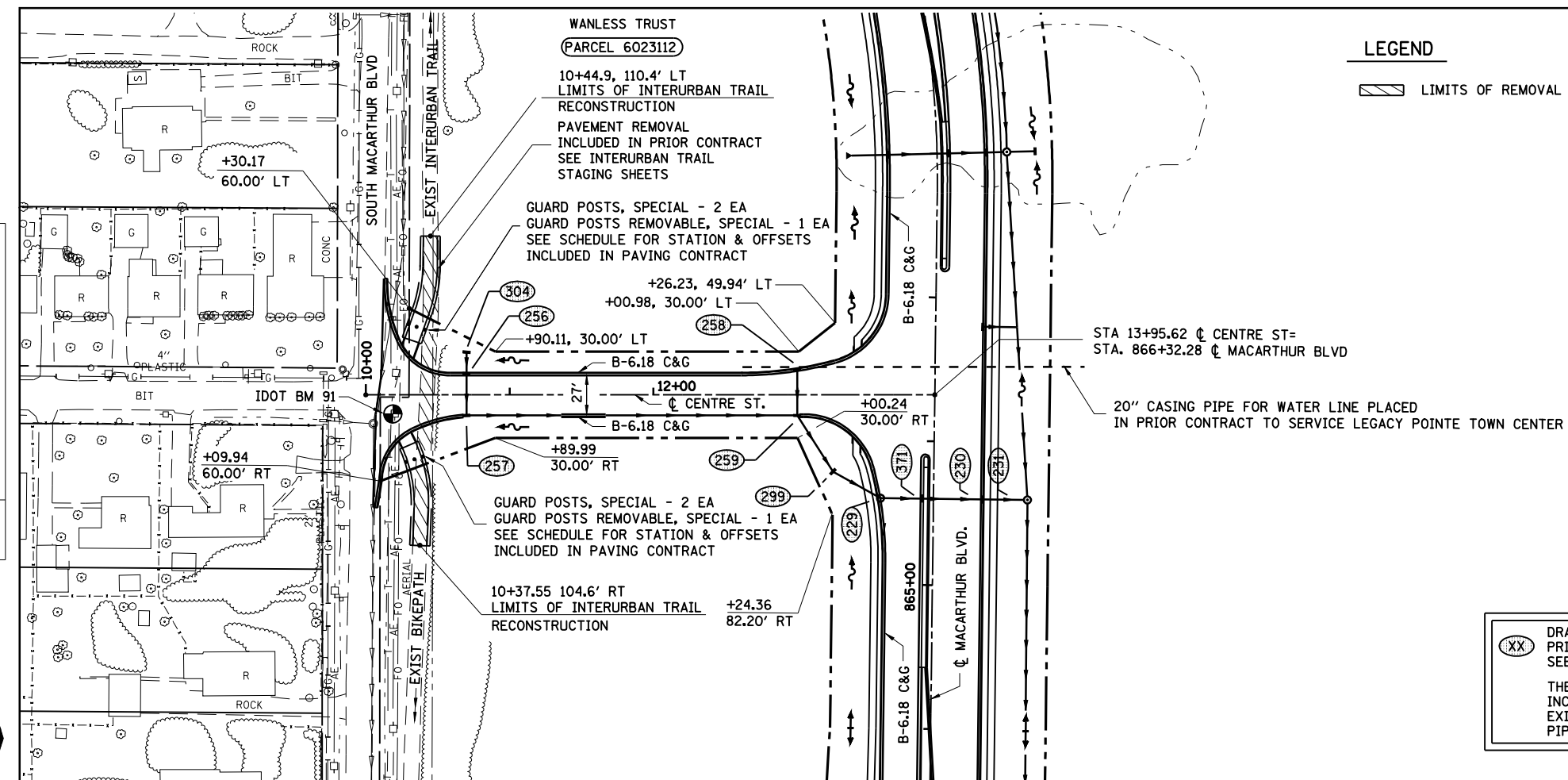
LIMITS OF REMOVAL

PLAN	SURVEYED	BY	DATE
	PLOTTED		
	CHECKED		
	BY		
	NO. OF WAY CHECKED		
	DATE		



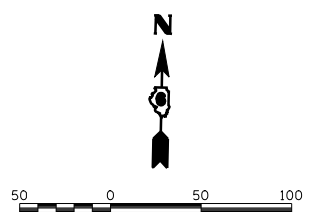
PROFILE	SURVEYED	BY	DATE
	PLOTTED		
	CHECKED		
	BY		
	STRUCTURE NOTATIONS CHKD		

LAYOUT	CLG	09/17/01
DRAWN	CLG	09/17/01
REVIEWED	JMM	09/17/01



(XX) DRAINAGE STRUCTURE CONSTRUCTED IN THE PRIOR GRADING & STRUCTURES CONTRACT. SEE DRAINAGE & STORM SEWER SCHEDULES.

THE PRIOR GRADING & STRUCTURES CONTRACT INCLUDED ALL CULVERT REMOVALS, FILLING OF EXISTING CULVERTS, PLACEMENT OF RIPRAP AND PIPE CULVERTS UNLESS NOTED OTHERWISE.



NOTE: EMBANKMENT/SUBGRADE CONSTRUCTED IN THE PRIOR GRADING & STRUCTURES CONTRACT TO APPROXIMATELY 3" ABOVE BOTTOM OF PAVEMENT.

