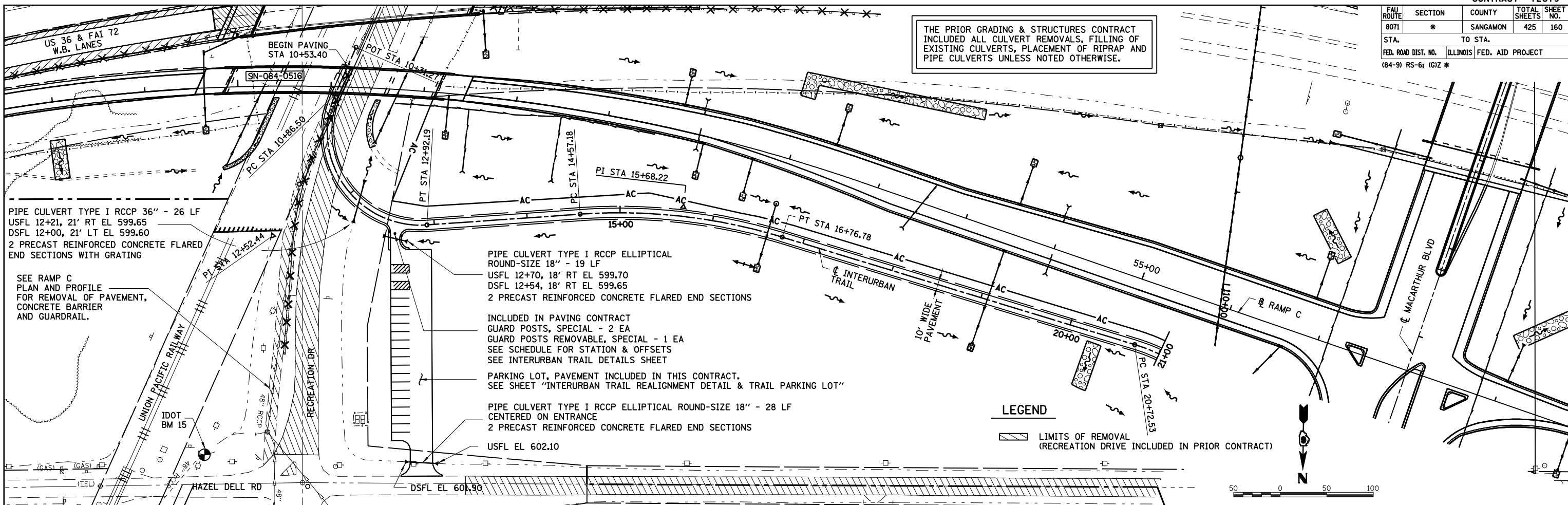


FAU ROUTE	SECTION	COUNTY	TOTAL SHEETS	SHEET NO.
8071	*	SANGAMON	425	160
STA. 8071		TO STA. 8072		
FED. ROAD DIST. NO.		ILLINOIS FED. AID PROJECT		
(84-9) RS-6; IGIZ *				

THE PRIOR GRADING & STRUCTURES CONTRACT INCLUDED ALL CULVERT REMOVALS, FILLING OF EXISTING CULVERTS, PLACEMENT OF RIPRAP AND PIPE CULVERTS UNLESS NOTED OTHERWISE.



SEE RAMP C PLAN AND PROFILE FOR REMOVAL OF PAVEMENT, CONCRETE BARRIER AND GUARDRAIL.

PIPE CULVERT TYPE I RCCP ELLIPTICAL ROUND-SIZE 18" - 19 LF  
 USFL 12+70, 18' RT EL 599.70  
 DSFL 12+54, 18' RT EL 599.65  
 2 PRECAST REINFORCED CONCRETE FLARED END SECTIONS

INCLUDED IN PAVING CONTRACT GUARD POSTS, SPECIAL - 2 EA GUARD POSTS REMOVABLE, SPECIAL - 1 EA SEE SCHEDULE FOR STATION & OFFSETS SEE INTERURBAN TRAIL DETAILS SHEET

PARKING LOT, PAVEMENT INCLUDED IN THIS CONTRACT. SEE SHEET "INTERURBAN TRAIL REALIGNMENT DETAIL & TRAIL PARKING LOT"

PIPE CULVERT TYPE I RCCP ELLIPTICAL ROUND-SIZE 18" - 28 LF  
 CENTERED ON ENTRANCE  
 2 PRECAST REINFORCED CONCRETE FLARED END SECTIONS  
 USFL EL 602.10

LEGEND

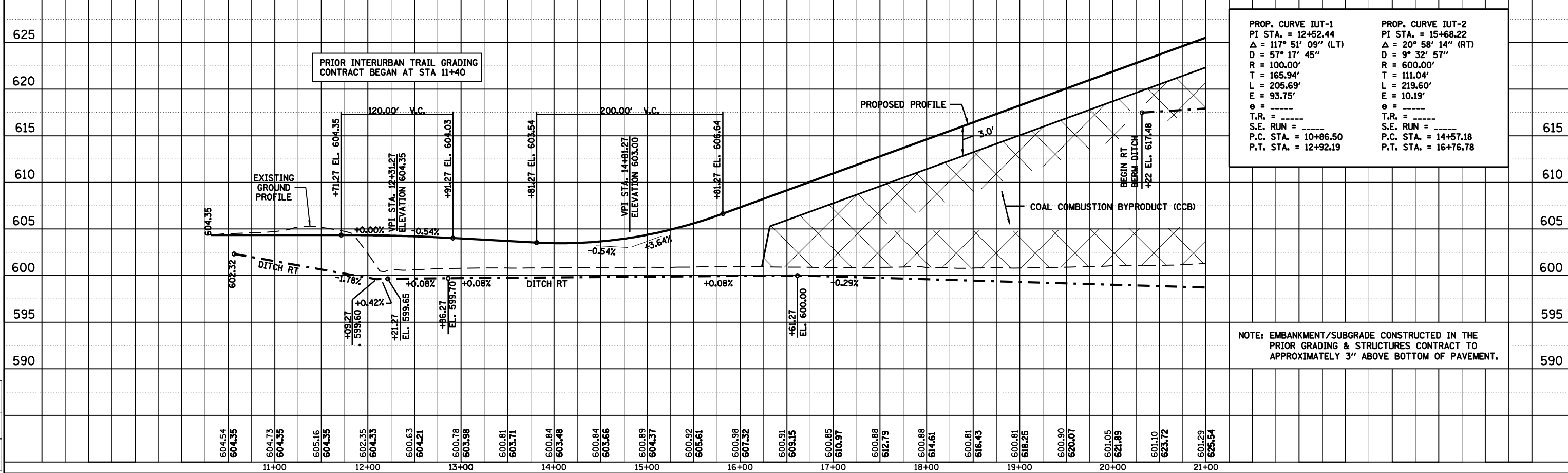
LIMITS OF REMOVAL (RECREATION DRIVE INCLUDED IN PRIOR CONTRACT)



PLAN	DATE



PROFILE	DATE



NOTE: EMBANKMENT/SUBGRADE CONSTRUCTED IN THE PRIOR GRADING & STRUCTURES CONTRACT TO APPROXIMATELY 3" ABOVE BOTTOM OF PAVEMENT.

LAYOUT	DATE