

FAU ROUTE	SECTION	COUNTY	TOTAL SHEETS	SHEET NO.
8071	*	SANGAMON	425	161
STA.		TO STA.		
FED. ROAD DIST. NO.		ILLINOIS FED. AID PROJECT		
(84-9) RS-6; (G)Z *				

PROP. CURVE IUT-3
 PI STA. = 22+75.38
 $\Delta = 90^\circ 48' 37''$ (RT)
 $D = 28^\circ 38' 52''$
 $R = 200.00'$
 $T = 202.85'$
 $L = 316.99'$
 $E = 84.86'$
 $e = \text{---}$
 $T.R. = \text{---}$
 $S.E. RUN = \text{---}$
 $P.C. STA. = 20+72.53$
 $P.T. STA. = 23+89.51$

PROP. CURVE IUT-4
 PI STA. = 30+01.81
 $\Delta = 18^\circ 44' 23''$ (RT)
 $D = 8^\circ 11' 06''$
 $R = 700.00'$
 $T = 115.51'$
 $L = 228.95'$
 $E = 9.47'$
 $e = \text{---}$
 $T.R. = \text{---}$
 $S.E. RUN = \text{---}$
 $P.C. STA. = 28+86.31$
 $P.T. STA. = 31+15.26$

DATE	BY

PLAN SURVEYED, PLOTTED, CHECKED, DATE FILED, NO. _____

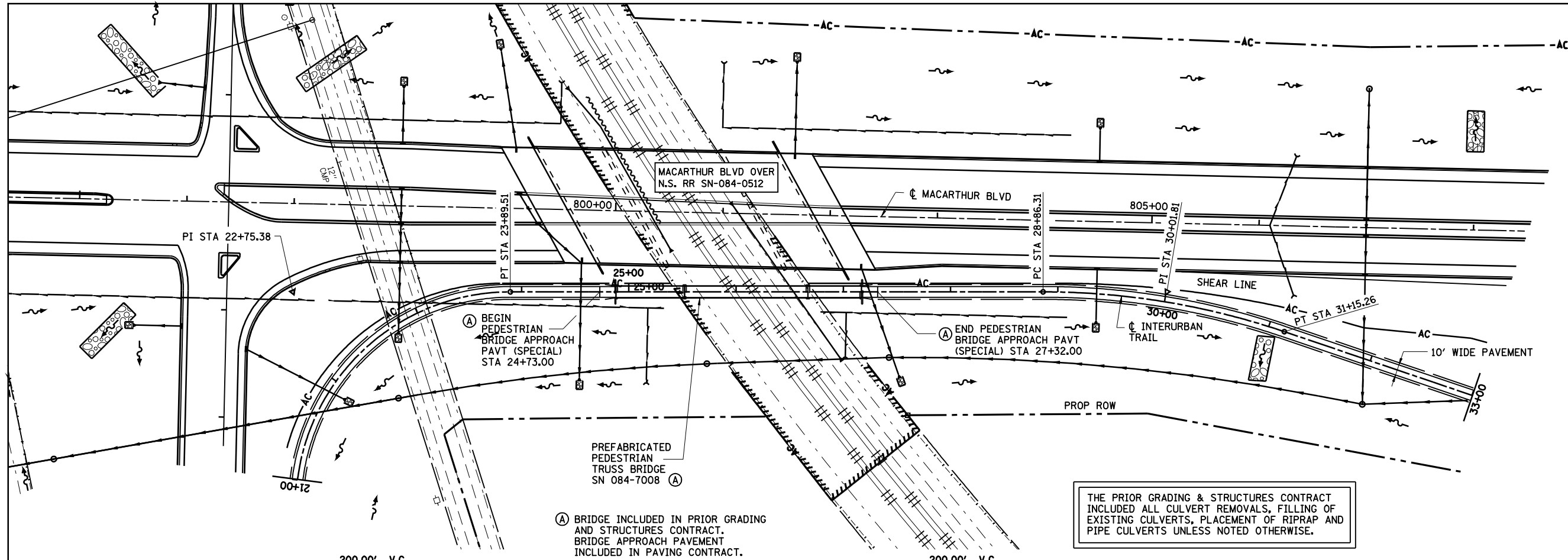


DATE	BY

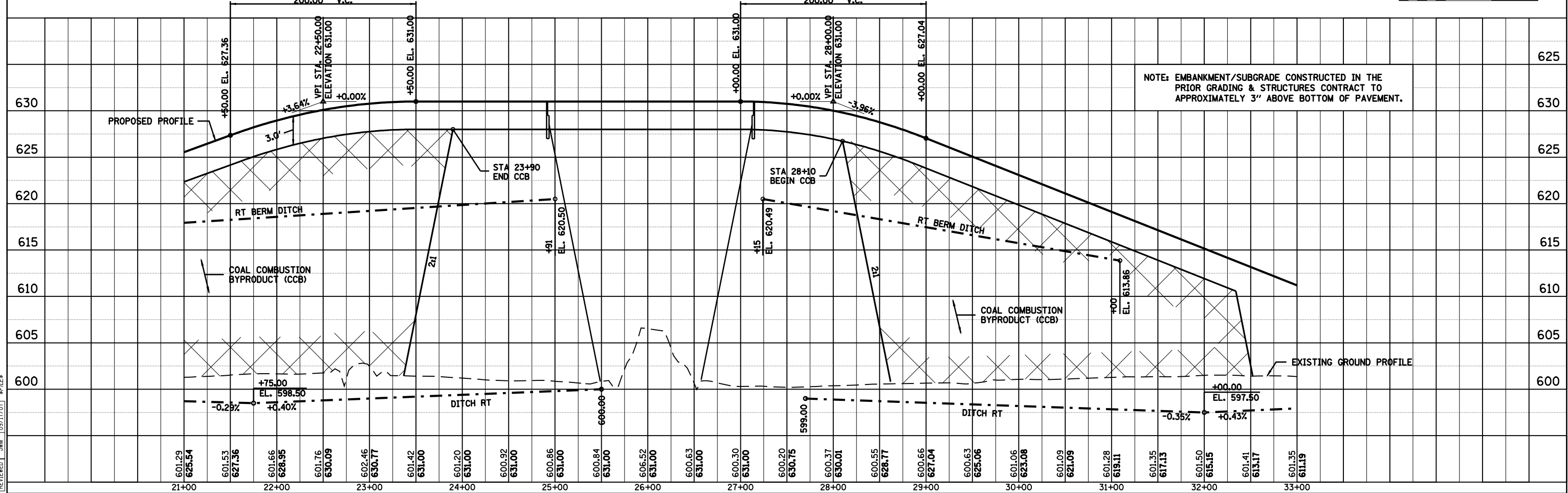
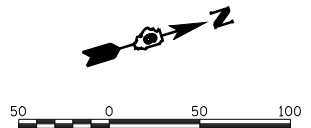
PROFILE SURVEYED, PLOTTED, CHECKED, DATE FILED, NO. _____

DATE	BY

LAYOUT, DRAWN, REVIEWED, DATE, TIME



THE PRIOR GRADING & STRUCTURES CONTRACT INCLUDED ALL CULVERT REMOVALS, FILLING OF EXISTING CULVERTS, PLACEMENT OF RIPRAP AND PIPE CULVERTS UNLESS NOTED OTHERWISE.



NOTE: EMBANKMENT/SUBGRADE CONSTRUCTED IN THE PRIOR GRADING & STRUCTURES CONTRACT TO APPROXIMATELY 3" ABOVE BOTTOM OF PAVEMENT.