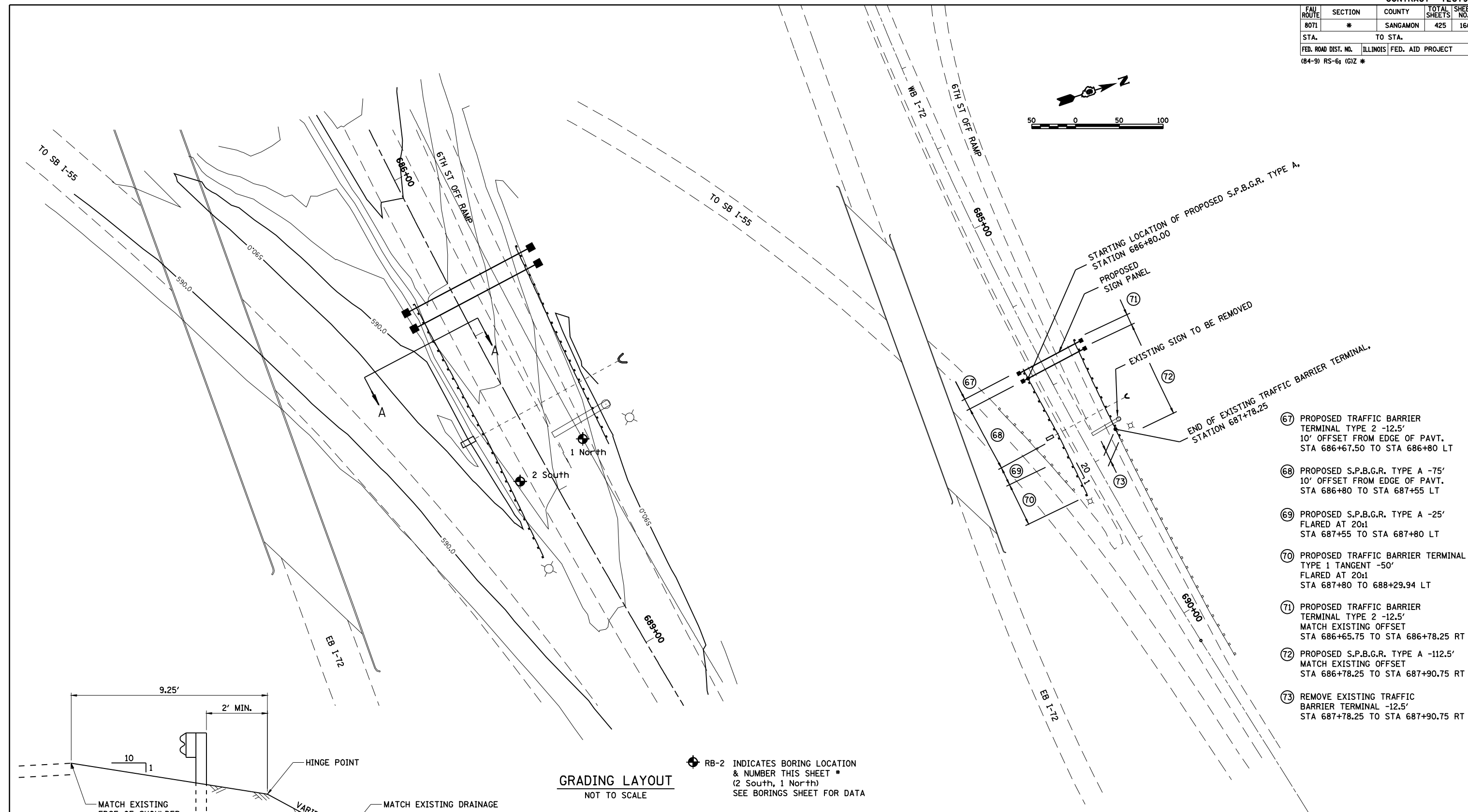
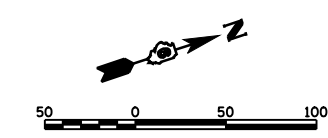


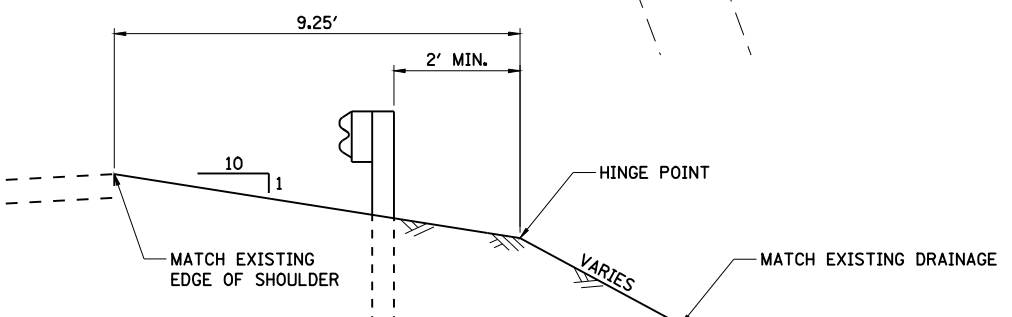
FAU ROUTE	SECTION	COUNTY	TOTAL SHEETS	SHEET NO.
8071	*	SANGAMON	425	166
STA.		TO STA.		
FED. ROAD DIST. NO.	ILLINOIS	FED. AID PROJECT		
(84-9) RS-6; (G)Z *				



- 67 PROPOSED TRAFFIC BARRIER TERMINAL TYPE 2 -12.5' 10' OFFSET FROM EDGE OF PAVT. STA 686+67.50 TO STA 686+80 LT
- 68 PROPOSED S.P.B.G.R. TYPE A -75' 10' OFFSET FROM EDGE OF PAVT. STA 686+80 TO STA 687+55 LT
- 69 PROPOSED S.P.B.G.R. TYPE A -25' FLARED AT 20:1 STA 687+55 TO STA 687+80 LT
- 70 PROPOSED TRAFFIC BARRIER TERMINAL TYPE 1 TANGENT -50' FLARED AT 20:1 STA 687+80 TO 688+29.94 LT
- 71 PROPOSED TRAFFIC BARRIER TERMINAL TYPE 2 -12.5' MATCH EXISTING OFFSET STA 686+65.75 TO STA 686+78.25 RT
- 72 PROPOSED S.P.B.G.R. TYPE A -112.5' MATCH EXISTING OFFSET STA 686+78.25 TO STA 687+90.75 RT
- 73 REMOVE EXISTING TRAFFIC BARRIER TERMINAL -12.5' STA 687+78.25 TO STA 687+90.75 RT

RB-2 INDICATES BORING LOCATION & NUMBER THIS SHEET * (2 South, 1 North) SEE BORINGS SHEET FOR DATA

GRADING LAYOUT
NOT TO SCALE



SECTION A-A
NOT TO SCALE

NOTE: ALL WORK ON THIS SHEET INCLUDED IN PAVING CONTRACT

REVISIONS	
NAME	DATE

ILLINOIS DEPARTMENT OF TRANSPORTATION
GUARDRAIL LAYOUT -3
FAI-72, MACARTHUR BLVD
SECTION
(84-9) RS-6; (G)Z
SANGAMON COUNTY, ILLINOIS

SCALE: VERT. _____
 HORIZ. _____
 DATE: Mar-20-2008 08:37:25AM

DRAWN BY: HPS
 CHECKED BY: JWM