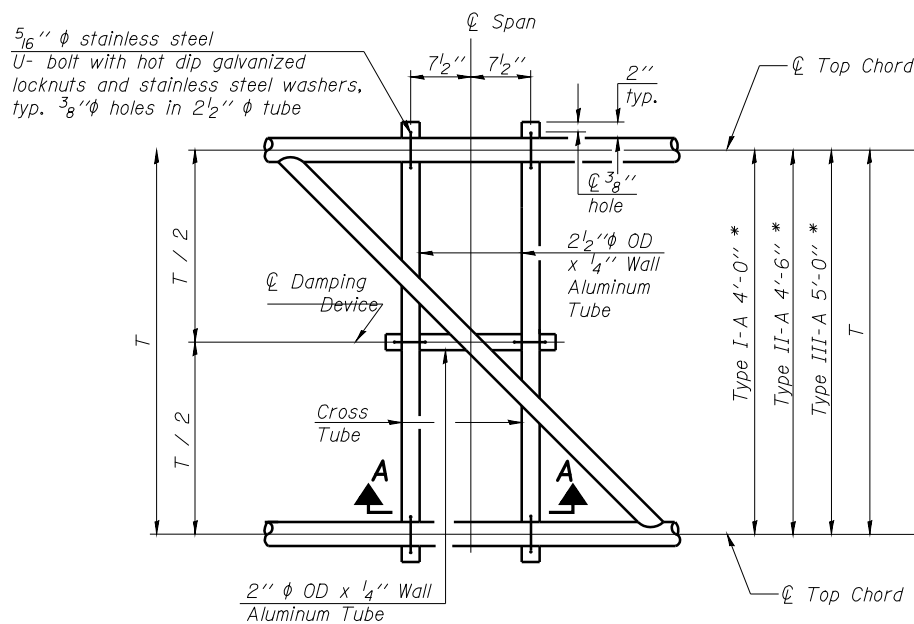


STATE OF ILLINOIS  
DEPARTMENT OF TRANSPORTATION

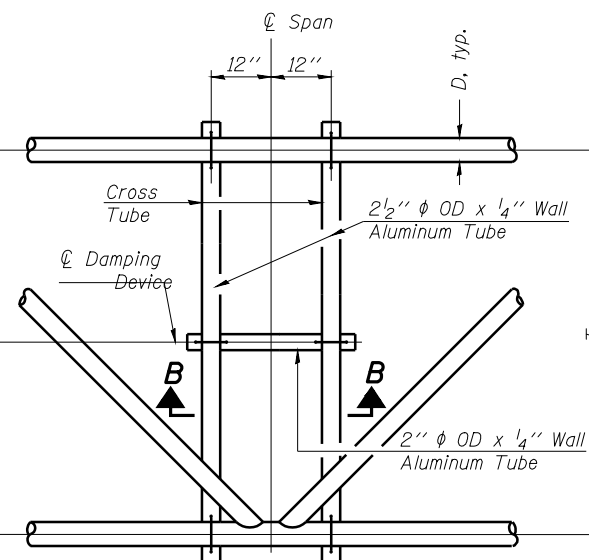
\* Center of horizontal to center of splice dimension may vary. Verify before drilling holes in mounting tube.

ROUTE NO.	SECTION	COUNTY	TOTAL SHEETS	SHEET NO.
8071	*	SANGAMON	425	243
FED. ROAD DIST. NO. 7	ILLINOIS	FED. AID PROJECT-		

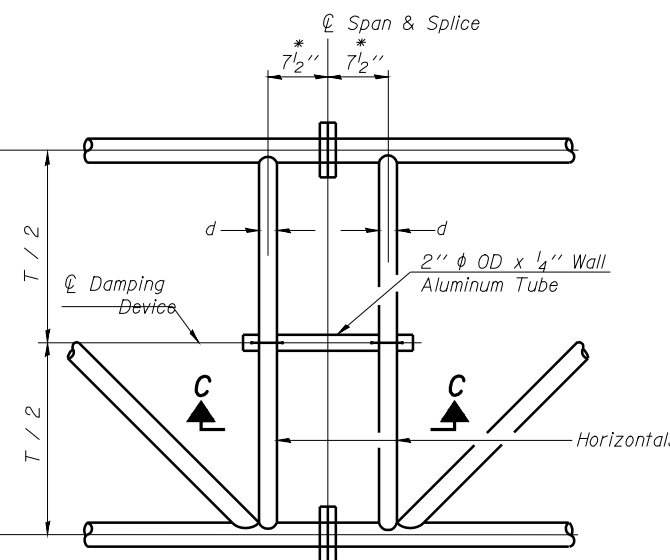
\*(84-9) RS-6; (G)Z



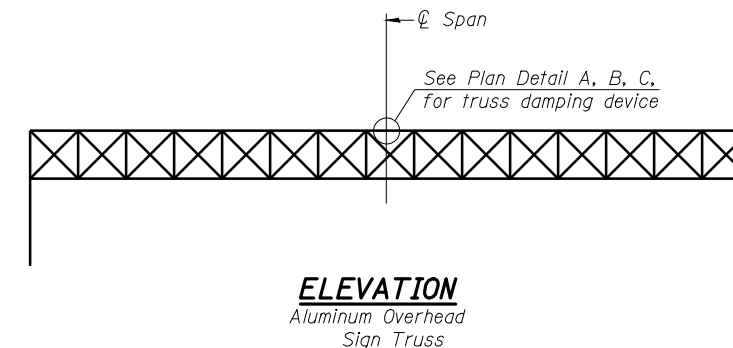
**PLAN DETAIL "A"**  
Span between Panel Points



**PLAN DETAIL "B"**  
Span at Panel Point



**PLAN DETAIL "C"**  
Span at Chord Splice

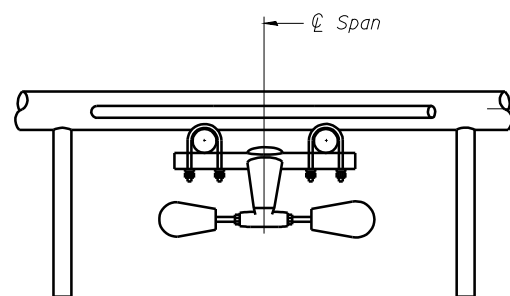


**ELEVATION**  
Aluminum Overhead Sign Truss

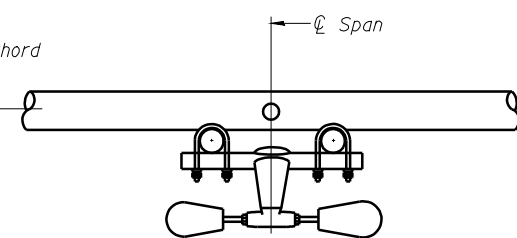
**NOTES**

Damper: One damper per truss. (31 lbs. minimum Stockbridge-Type Aluminum - 29" minimum between ends of weights) Cost included in Overhead Sign Structure...

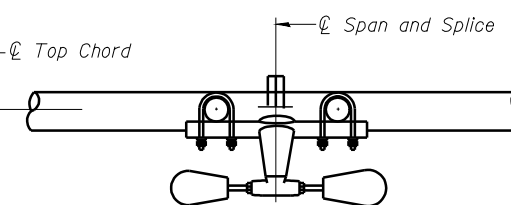
Materials: Materials: Aluminum tubes shall be ASTM B221 alloy 6061 temper T6. Cost included in Overhead Sign Structure...



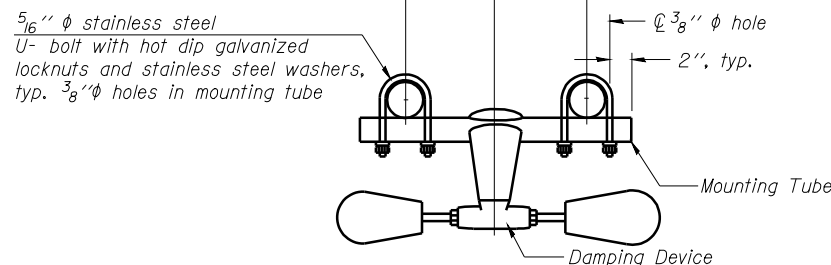
**SECTION A-A**



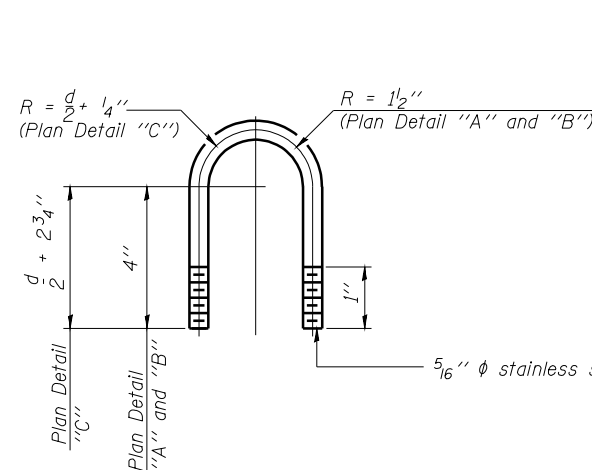
**SECTION B-B**



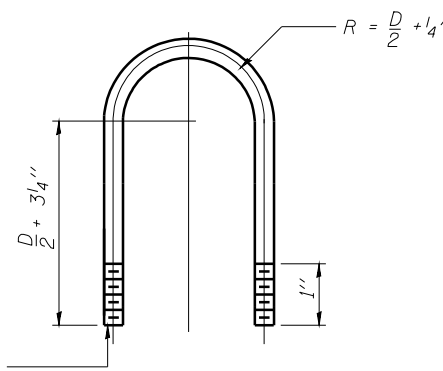
**SECTION C-C**



**TRUSS DAMPING DEVICE CONNECTION DETAIL**  
(Typical)



**DAMPING DEVICE MOUNTING TUBE U-BOLT DETAIL**  
(Typical)



**TOP CHORD TO CROSS TUBE U-BOLT DETAIL**  
(Typical - Detail "A" and "B")

DESIGNED	-	20
CHECKED	-	EXAMINED
DRAWN	-	ENGINEER OF BRIDGE DESIGN
CHECKED	-	PASSED
		ENGINEER OF BRIDGES AND STRUCTURES

OS-A-D

6/01/2007

**OVERHEAD SIGN STRUCTURE DAMPING DEVICE**

SIGNING DETAIL  
6S084I072L097.6  
FAI-72, MACARTHUR BLVD