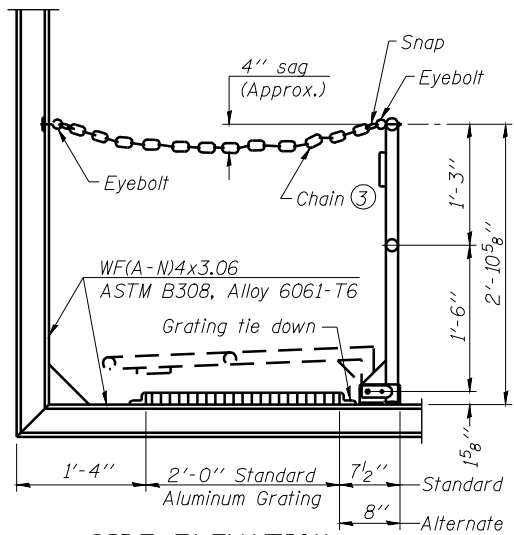


STATE OF ILLINOIS
DEPARTMENT OF TRANSPORTATION

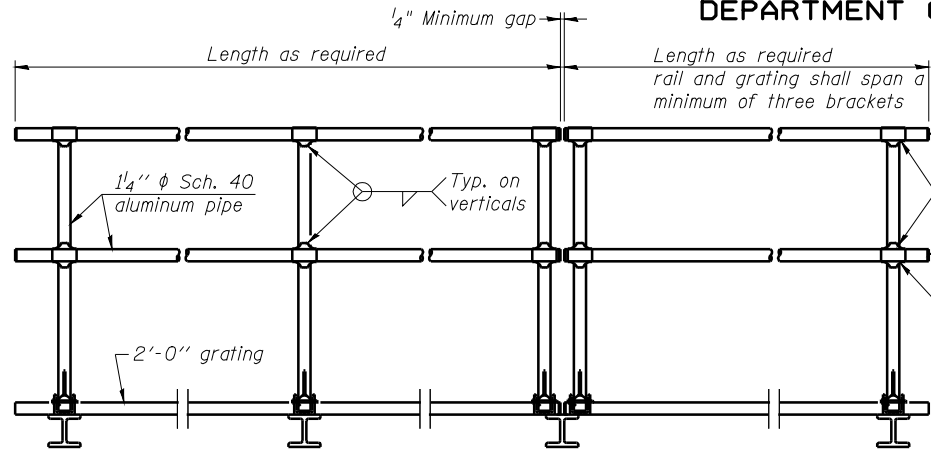
ROUTE NO.	SECTION	COUNTY	TOTAL SHEETS	SHEET NO.
8071	*	SANGAMON	425	248
FED. ROAD DIST. NO. 7		ILLINOIS	FED. AID PROJECT-	

* (84-9) RS-6; (G)Z



SIDE ELEVATION

(Showing safety chain w/o sign)

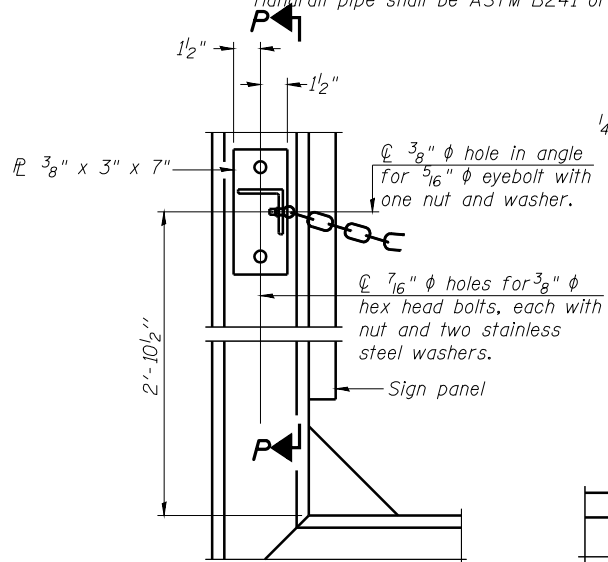


FRONT ELEVATION

② Horizontal handrail member shall be continuous thru fitting. Provide 7/16" φ hole in fitting for 3/8" φ bolt. Field drill 1/16" φ hole in horizontal rail member. Provide locknut and two stainless steel washers for bolt. (Use 5/16" eyebolts in 7/16" φ holes on top rail at ends only.)

HANDRAIL DETAILS

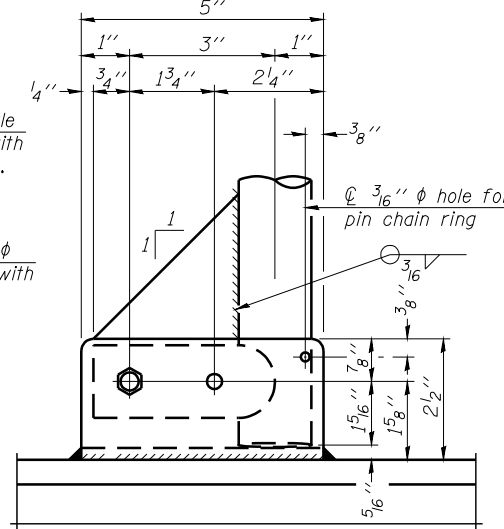
Handrail pipe shall be ASTM B241 or B429, Alloy 6063-T6 or Alloy 6061-T6.



ALTERNATE SAFETY CHAIN ATTACHMENT

(With Sign Present)

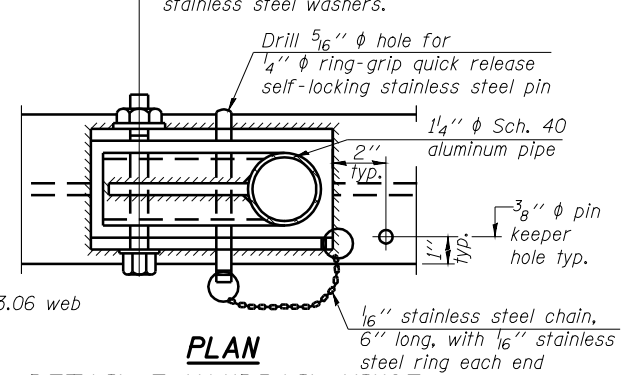
Items not shown same as "Side Elevation" of "Handrail Details"



SIDE ELEVATION

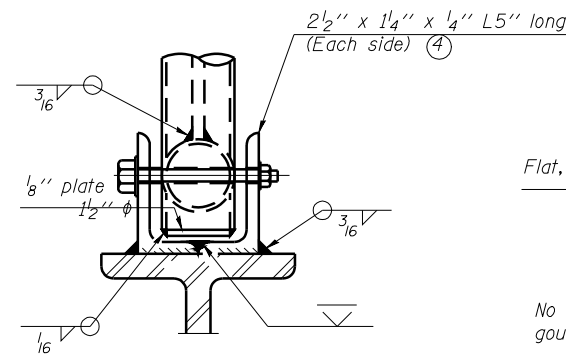
Drill and ream for 3/8" φ bolt with hexagon locknut and two stainless steel washers.

Drill 5/16" φ hole for 1/4" φ ring-grip quick release self-locking stainless steel pin



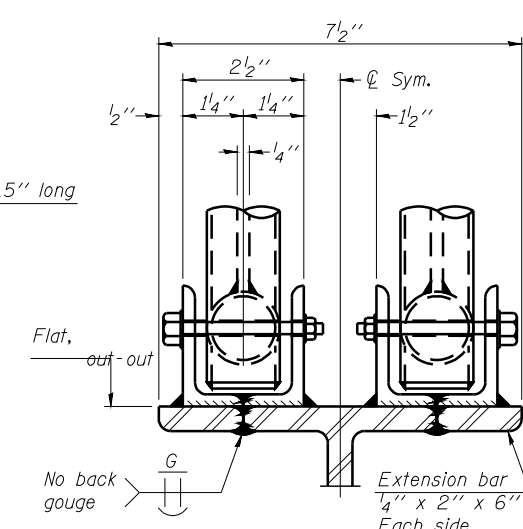
PLAN

DETAIL E HANDRAIL HINGE

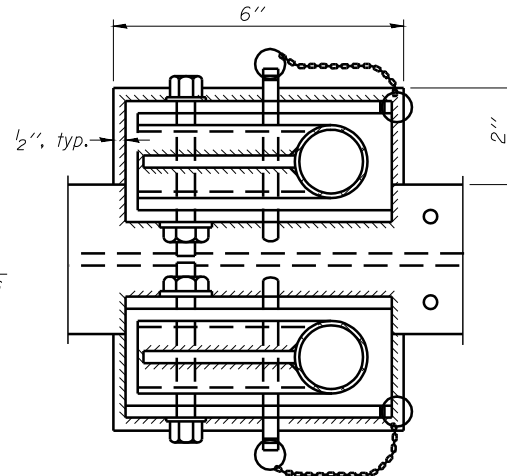


FRONT ELEVATION

See "Elevation" at right for dimensions.

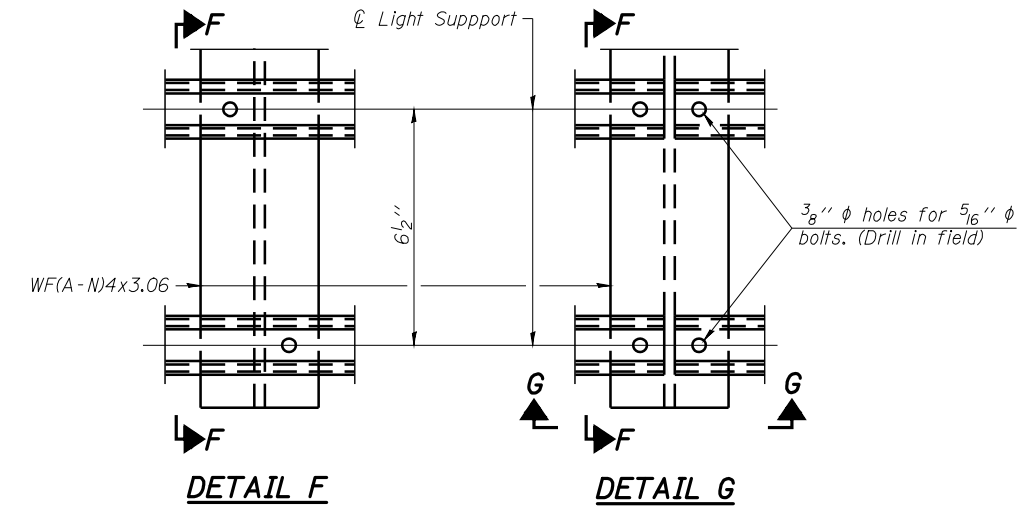


ELEVATION AT HANDRAIL JOINT



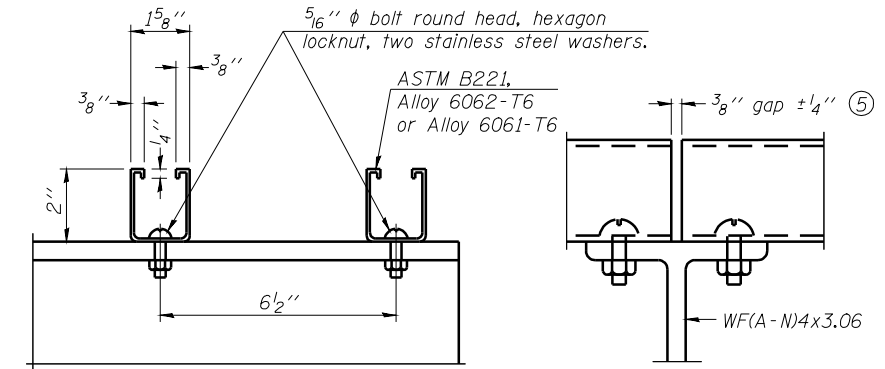
PLAN AT HANDRAIL JOINT

Details not shown same as "PLAN"



DETAIL F

DETAIL G

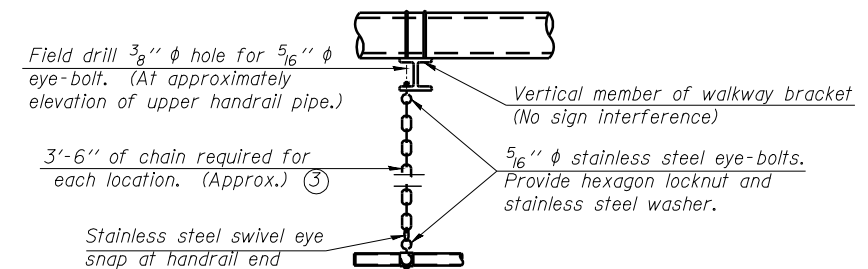


SECTION F-F

SECTION G-G

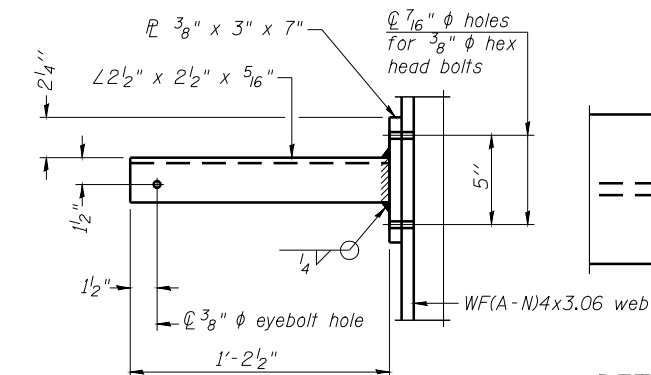
LIGHTING FIXTURE MOUNTS (IF REQUIRED)

⑤ Field cut ends of light support channels shall be free of burrs or hazardous projections and coated with zinc-rich primer or equivalent.

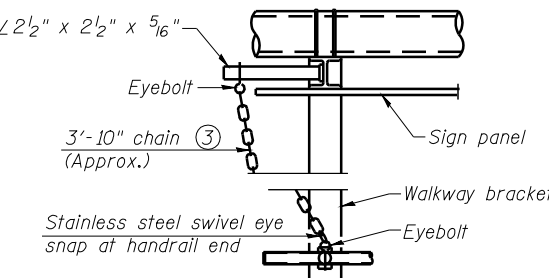


SAFETY CHAIN

One required for each end of each walkway.



SECTION P-P



ALTERNATE SAFETY CHAIN ATTACHMENT

Details not shown similar to "Safety Chain" Details (Walkway omitted for clarity)

③ 3/16" Type 304L stainless steel chain, approximately 12 links per foot.

④ Extrusions may be used in lieu of the details shown, with approval of the Engineer.

DESIGNED	-
CHECKED	-
DRAWN	-
CHECKED	-

EXAMINED	-	20
PASSED	-	ENGINEER OF BRIDGE DESIGN
	-	ENGINEER OF BRIDGES AND STRUCTURES

NUMBER	REVISION	DATE

**OVERHEAD SIGN STRUCTURES
ALUMINUM HANDRAIL DETAILS**

SIGNING DETAIL
6S084I072L097.6
FAI-72, MACARTHUR BLVD