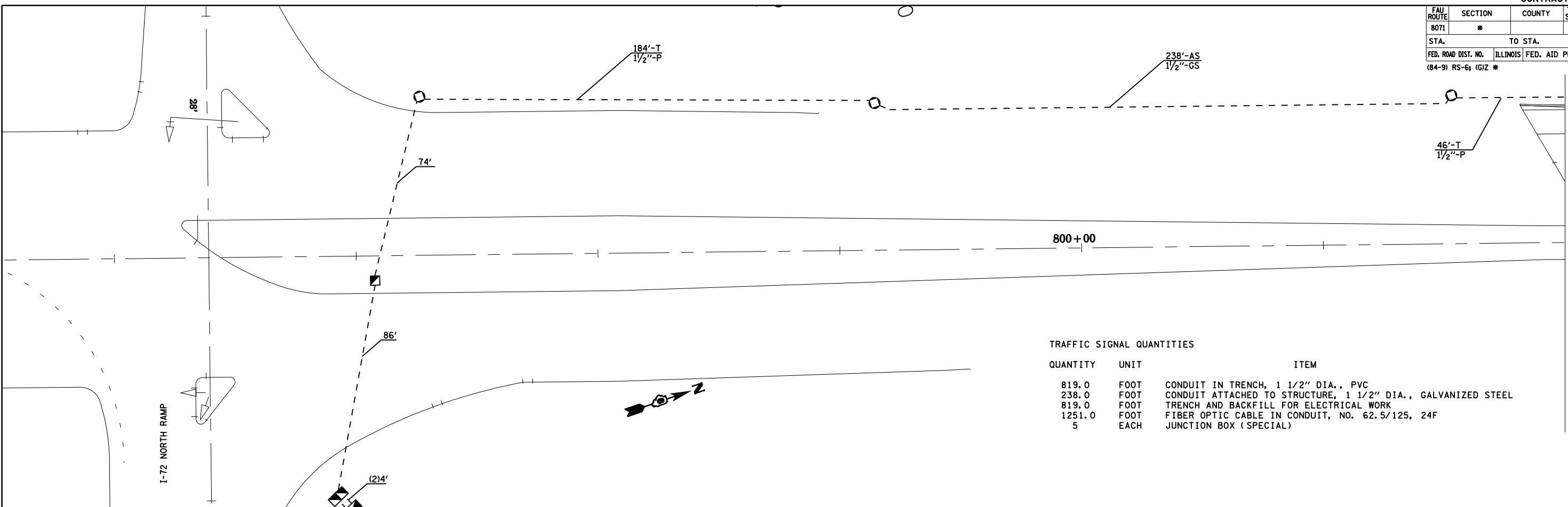
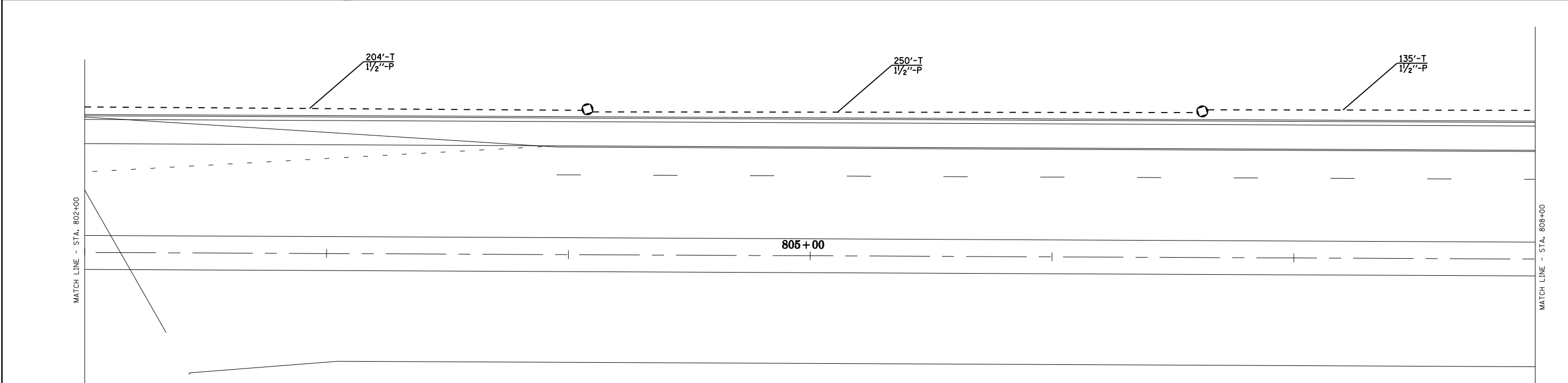


FAU ROUTE	SECTION	COUNTY	TOTAL SHEETS	SHEET NO.
8071	*		425	265
STA.		TO STA.		
FED. ROAD DIST. NO.	ILLINOIS	FED. AID PROJECT		
(84-9) RS-6; IGIZ *				



TRAFFIC SIGNAL QUANTITIES

QUANTITY	UNIT	ITEM
819.0	FOOT	CONDUIT IN TRENCH, 1 1/2" DIA., PVC
238.0	FOOT	CONDUIT ATTACHED TO STRUCTURE, 1 1/2" DIA., GALVANIZED STEEL
819.0	FOOT	TRENCH AND BACKFILL FOR ELECTRICAL WORK
1251.0	FOOT	FIBER OPTIC CABLE IN CONDUIT, NO. 62.5/125, 24F
5	EACH	JUNCTION BOX (SPECIAL)



PLOT DATE = Mar-28-2008 09:41:53AM
 FILE NAME = C:\Projeas\8555802\hanson.fma\plot_11a_for_seoffro_signal_plen.dgn
 PLOT SCALE = 42.3529' / IN.
 USER NAME = laughlinr1

REVISIONS	
NAME	DATE

ILLINOIS DEPARTMENT OF TRANSPORTATION
 PROPOSED TRAFFIC SIGNALS
 MACARTHUR BLVD
 SANGAMON COUNTY



SCALE: VERT. _____
 HORIZ. _____
 DATE _____
 DRAWN BY IDOT
 CHECKED BY IDOT