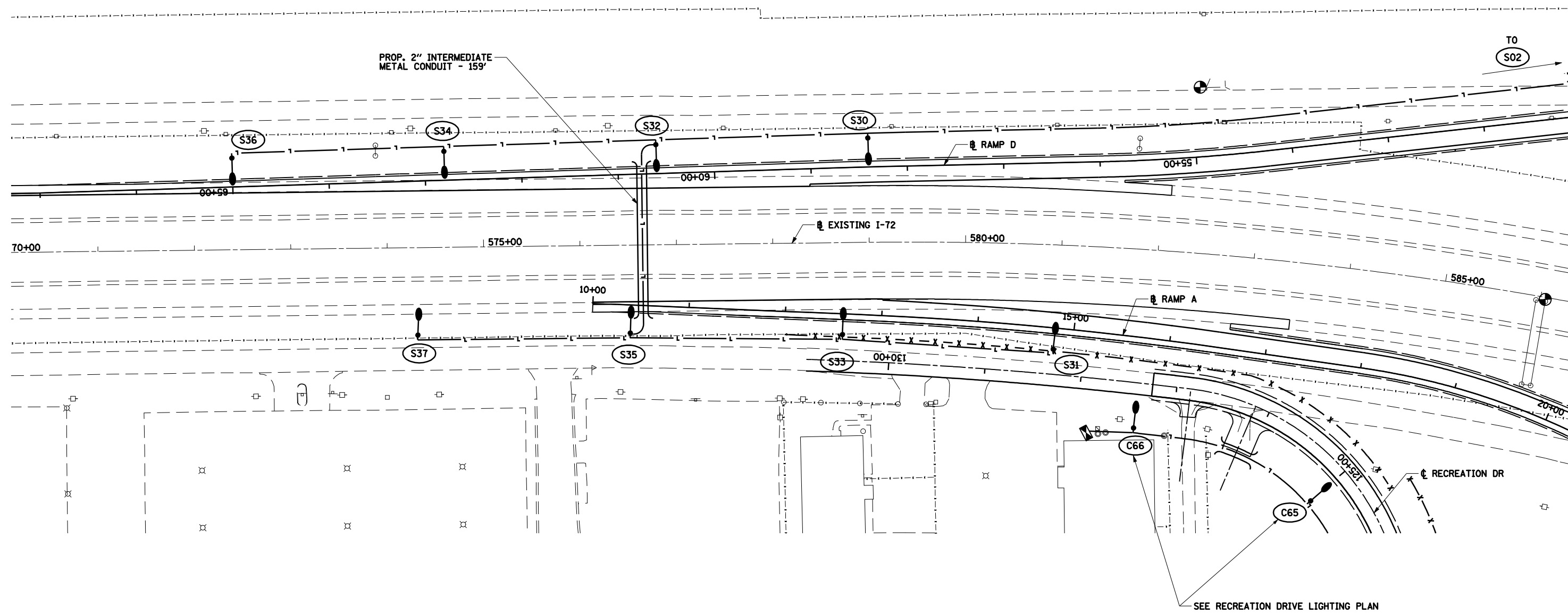


FAU ROUTE	SECTION	COUNTY	TOTAL SHEETS	SHEET NO.
8071	*	SANGAMON	425	280
STA.		TO STA.		
FED. ROAD DIST. NO.	ILLINOIS	FED. AID PROJECT		
(84-9) RS-6; (G)Z *				



PROP. 2" INTERMEDIATE METAL CONDUIT - 159'

TO S02

70+00

575+00

580+00

585+00

10+00

15+00

20+00

SEE RECREATION DRIVE LIGHTING PLAN

© Copyright Hanson Professional Services Inc. SMS_YEARS
HANSON

APR-30-2008 01:57:44PM
 \$FILES\$

LAYOUT	CLG	09/17/07
DRAWN	CLG	09/17/07
REVIEWED	JMM	09/17/07

LEGEND

- LIGHT POLE, STEEL, 45' M.H. TENON MOUNT
- CONDUIT PUSHED, INTERMEDIATE METAL (LENGTH AS SHOWN)
- UNIT DUCT (SIZE AS NOTED)
- LIGHTING CONTROLLER
- CITY FIXTURE REFERENCE NUMBER (SEE TABLE)
- STATE FIXTURE REFERENCE NUMBER (SEE TABLE)
- CONCRETE SPECIAL FOUNDATION - 8' DEPTH

FIXTURE REF. NO.	STATION	OFFSET
S31	14+80	22.0' RT
S33	12+60	21.5' RT
S35	10+40	29.0' RT
S37	8+20	32.0' RT
S30	58+40	30.0' RT
S32	60+60	30.0' RT
S34	62+80	30.0' RT
S36	65+00	30.0' RT

- NOTES:**
- SEE LIGHTING DETAIL SHEET 1 FOR CIRCUIT DESIGNATION, UNIT DUCT SIZE AND FIXTURE WATTAGE
 - ALL PROPOSED LIGHT POLE FOUNDATIONS ARE 6' METAL - UNLESS OTHERWISE INDICATED.
 - DISTRICT WILL PROVIDE THE NUMBERING SCHEME FOR INSTALLING POLE NUMBERS ON INTERCHANGE POLES.
 - CITY TO INSTALL POLE NUMBERS ON CITY OWNED POLES AFTER CONSTRUCTION.



REVISIONS	
NAME	DATE

ILLINOIS DEPARTMENT OF TRANSPORTATION
LIGHTING PLAN
 MACARTHUR BOULEVARD - 5
 SECTION
 (84-9) RS-6; (G)Z
 SANGAMON COUNTY, ILLINOIS

SCALE: VERT. _____
 HORIZ. _____
 DATE: Apr-30-2008 01:57:44PM

DRAWN BY: JAP
 CHECKED BY: JWM