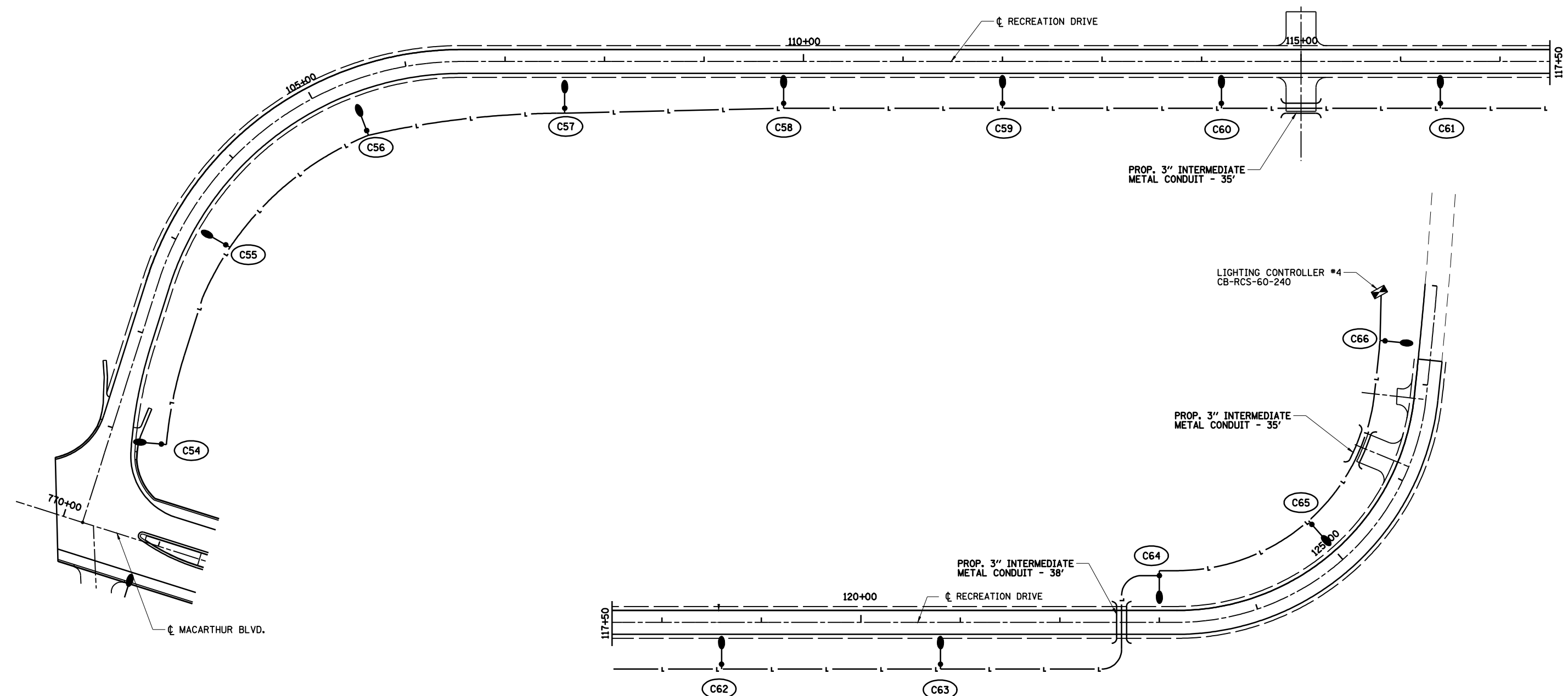


FAU ROUTE	SECTION	COUNTY	TOTAL SHEETS	SHEET NO.
8071	*	SANGAMON	425	282
STA.		TO STA.		
FED. ROAD DIST. NO.	ILLINOIS	FED. AID PROJECT		
(84-9) RS-6; (G)Z *				

© Copyright Hanson Professional Services Inc. \$MS_YEARS
HANSON

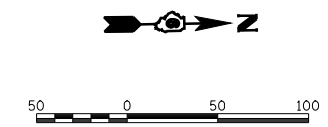


LEGEND

- LIGHT POLE, STEEL, 45' M.H. TENON MOUNT
- CONDUIT PUSHED, INTERMEDIATE METAL (LENGTH AS SHOWN)
- UNIT DUCT (SIZE AS NOTED)
- LIGHTING CONTROLLER
- CITY FIXTURE REFERENCE NUMBER (SEE TABLE)
- STATE FIXTURE REFERENCE NUMBER (SEE TABLE)
- CONCRETE SPECIAL FOUNDATION - 8' DEPTH

FIXTURE REF. NO.	STATION	OFFSET
C54	101+00	51.8' RT
C55	103+20	47.0' RT
C56	105+40	52.0' RT
C57	107+60	47.0' RT
C58	109+80	42.0' RT
C59	112+00	42.0' RT
C60	114+20	42.0' RT
C61	116+40	42.0' RT
C62	118+60	42.0' RT
C63	120+80	42.0' RT
C64	123+00	47.0' LT
C65	125+00	47.0' LT
C66	127+40	47.0' LT

- NOTES:**
- SEE LIGHTING DETAIL SHEET 1 FOR CIRCUIT DESIGNATION, UNIT DUCT SIZE AND FIXTURE WATTAGE
 - ALL PROPOSED LIGHT POLE FOUNDATIONS ARE 6' METAL - UNLESS OTHERWISE INDICATED.
 - CITY TO INSTALL POLE NUMBERS ON CITY OWNED POLES AFTER CONSTRUCTION.



REVISIONS	
NAME	DATE

ILLINOIS DEPARTMENT OF TRANSPORTATION
LIGHTING PLAN
 RECREATION DRIVE
 SECTION
 (84-9) RS-6; (G)Z
 SANGAMON COUNTY, ILLINOIS

SCALE: VERT. DATE: Apr-30-2008 01:57:29PM
 HORIZ. DATE: Apr-30-2008 01:57:29PM
 DRAWN BY: JAP
 CHECKED BY: JWM

AP-30-2008 01:57:29PM
 \$FILE\$
 LAYOUT CLG 09/17/07
 DRAWN CLG 09/17/07
 REVIEWED JWM 09/17/07