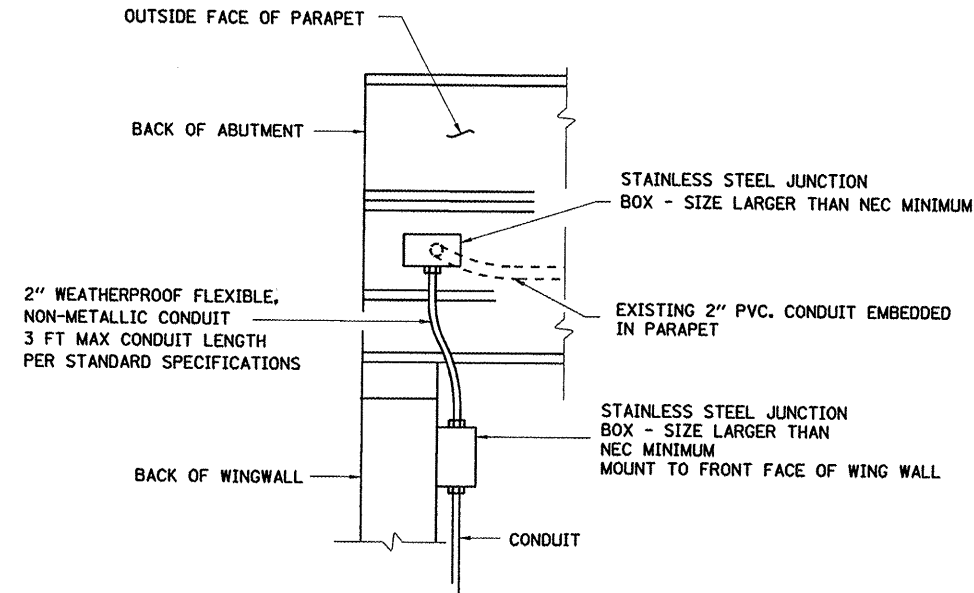
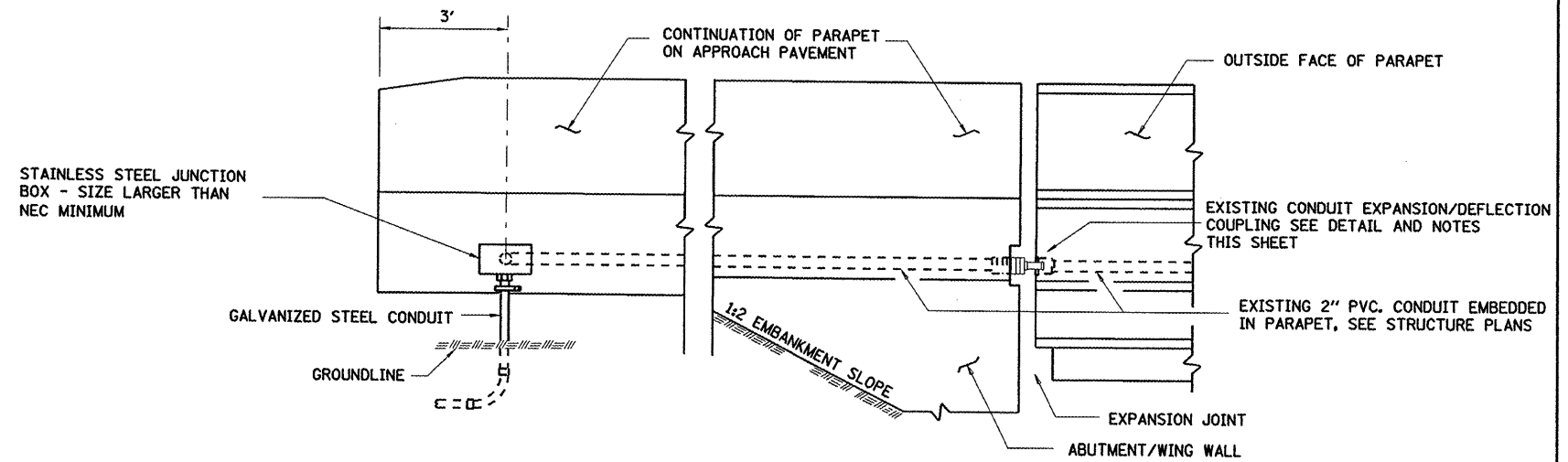


FAH ROUTE	SECTION	COUNTY	TOTAL SHEETS	SHEET NO.
8071	#	SANGAMON	425	286
STA.		TO STA.		
FED. ROAD DIST. NO.		ILLINOIS FED. AID PROJECT		
(84-9) RS-6; (G)Z #				



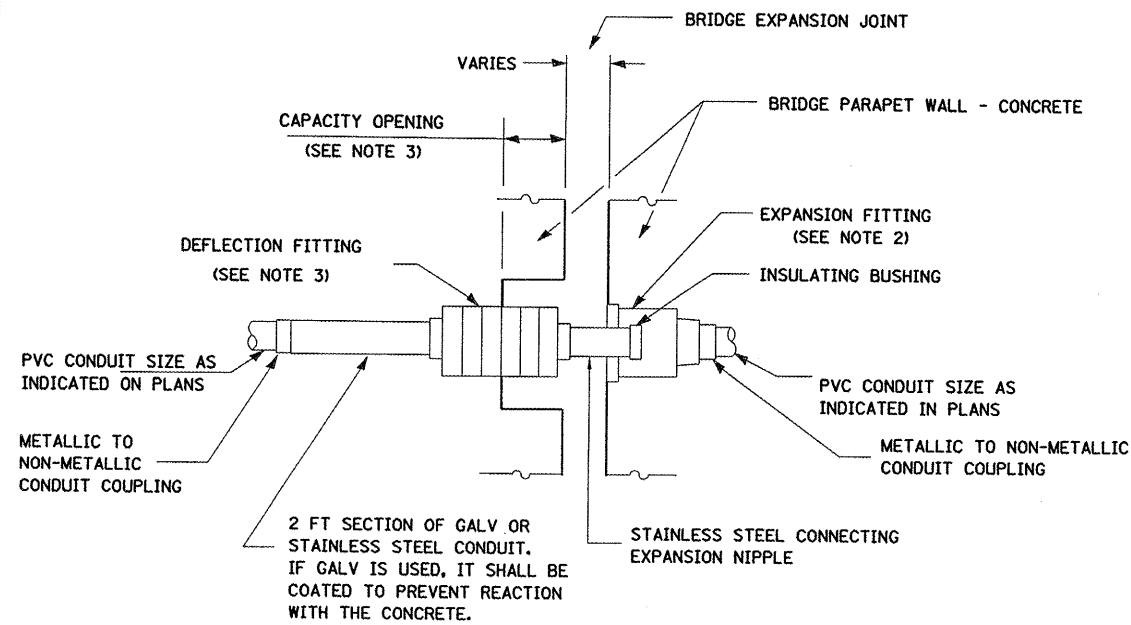
PARTIAL PARAPET ELEVATION AT ABUTMENT SHOWING CONDUIT ENTRY/EXIT

TYPICAL BOTH ENDS OF EACH PARAPET FOR S.N. 084-0513
 TYPICAL BOTH ENDS OF EACH PARAPET FOR S.N. 084-0512



PARTIAL PARAPET ELEVATION AT ABUTMENT SHOWING CONDUIT ENTRY/EXIT

TYPICAL BOTH ENDS OF NORTH PARAPET FOR S.N. 084-0516
 TYPICAL BOTH ENDS OF SOUTH PARAPET FOR S.N. 084-0514



EXISTING CONDUIT EXPANSION / DEFLECTION COUPLING DETAIL
 FOR INFORMATION ONLY

NOTES

1. THE CONTRACTOR SHALL INSTALL A CONDUIT EXPANSION / DEFLECTION COUPLING AT THE JOINTS IN THE CONCRETE PARAPET ON THE BRIDGE CAPABLE OF ACCEPTING THE LONGITUDINAL MOVEMENT. THE METALLIC PARTS OF THE COUPLING SHALL BE MADE OF STAINLESS STEEL OR AS APPROVAL BY THE ENGINEER. THE COST OF THE COUPLING SHALL BE A PART OF AND INCIDENTAL TO THE CONDUIT SYSTEM.
2. THE BARREL IN THE EXPANSION FITTING SHALL BE FULLY EMBEDDED IN THE CONCRETE ON ONE SIDE OF THE EXPANSION JOINT.
3. ONE HALF OF THE LENGTH OF THE DEFLECTION FITTING SHALL BE EMBEDDED IN THE CONCRETE ON THE OTHER SIDE OF THE EXPANSION JOINT. A CAVITY OPENING 3" LARGER THAN THE DIAMETER OF THE DEFLECTION SLEEVE LENGTH SHALL BE PROVIDED TO ENSURE PROPER PERFORMANCE OF THE COUPLING.
4. CAREFUL ATTENTION TO JOINT MOVEMENT OVER A RANGE OF TEMPERATURES SHALL BE COORDINATED WITH THE SELECTION AND INSTALLATION OF THE COUPLING TO ENSURE THE RANGE OF MOVEMENT OF THE COUPLING IS NOT EXCEEDED AT TEMPERATURE EXTREMES.
5. ALL MANUFACTURER'S INSTALLATION INSTRUCTIONS SHALL BE CAREFULLY FOLLOWED TO ENSURE OPTIMUM PERFORMANCE OF THE EXPANSION / DEFLECTION COUPLING.
6. THE CONTRACTOR SHALL INSTALL COUPLINGS AT ALL BRIDGE EXPANSION JOINTS AND SHALL BE RESPONSIBLE TO DETERMINE THE PROPER NUMBER OF COUPLINGS REQUIRED.
7. WITH THE APPROVAL OF THE ENGINEER, THE CONTRACTOR MAY SUBSTITUTE TWO (2) STAINLESS STEEL JUNCTION BOXES ATTACHED TO THE BACK OF THE WALL AND CONNECTED BY A HIGH GRADE OF FLEXIBLE NON-METALLIC CONDUIT FOR ALL EXPANSION JOINTS. THIS SUBSTITUTION SHALL BE MADE AT NO COST TO THE DEPARTMENT.

REVISIONS	
NAME	DATE

ILLINOIS DEPARTMENT OF TRANSPORTATION
LIGHTING DETAILS -4
 BRIDGE CROSSING DETAILS
 LGT001.M32
 (84-9) RS-6; (G)Z
 SANGAMON COUNTY, ILLINOIS
 SCALE: VERT. _____
 HORIZ. _____
 DATE **May-19-2008 08:57:30AM** DRAWN BY _____
 CHECKED BY _____