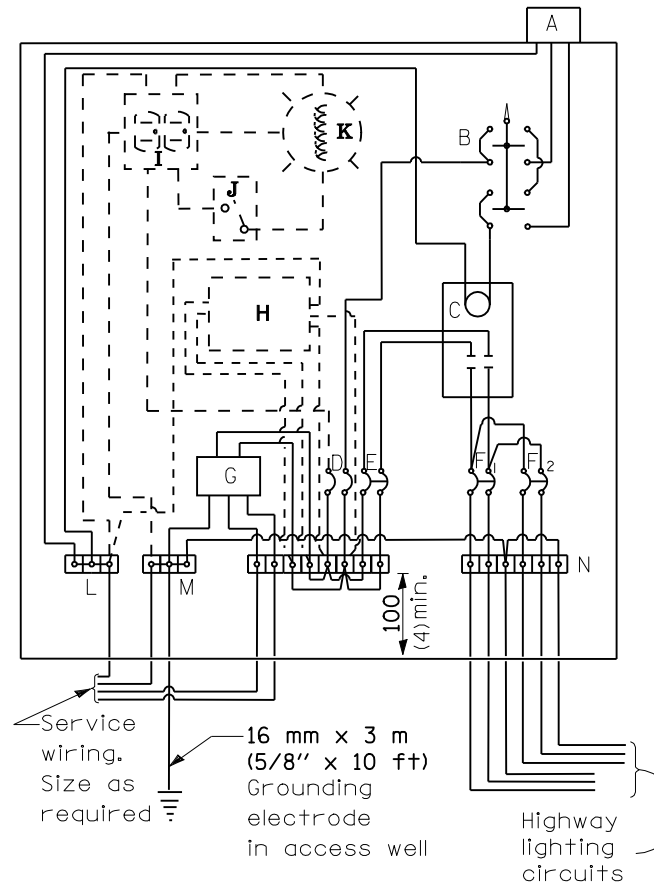


FAU ROUTE	SECTION	COUNTY	TOTAL SHEETS	SHEET NO.
8071	*	SANGAMON	425	290
STA.		TO STA.		
FED. ROAD DIST. NO.		ILLINOIS	FED. AID PROJECT	
(84-9) RS-6; (G)Z *				



CONTROL SCHEMATIC

- MATERIALS**
- A Photocell w/ integral surge arrester (remote mount in urban areas)
 - B 3 position selector switch HAND-OFF-AUTO
 - C 100 amp* electrically held contactor, 120V operating coil
 - D 15 amp, 1 pole, circuit breaker
 - E 100 amp*, 2 pole, main circuit breaker
 - F 20 amp*, 2 pole, branch circuit breaker (typ). 2 spare c.b. required but not shown
 - G Surge arrester
 - H Transformer (see notes), 1 KVA*, 240/480V primary, 120/240V sec, single phase
 - I GFCI duplex receptacle
 - J Single pole, single throw switch
 - K Shielded security fixture with 100W lamp
 - L Neutral bar
 - M Equipment ground bar
 - N Terminal block (typ)
- (* = Size larger as needed)

GENERAL NOTES

Locate service pole and control installation adjacent to R.O.W. line with a minimum distance of 9 m (30') from the edge of pavement. Locate in close proximity to the utility transformer so the service drop does not exceed 46 m (150ft) and the total distance of overhead and underground cable (utility transformer to lighting controller) does not exceed 76 m (250ft). Exact location shall be established by the Engineer.

Wiring shall be panel board fashion. All bends shall be right angles. All runs shall vertical or parallel to panel board. Wires shall be grouped or laced.

All control installation components shall be U.L. listed.

Add receptacle, light, and switch in control cabinet, when specified.

For 480 V service, a step down transformer (dashed lines) is required.

Raceways shall terminate 75 (3) above top of concrete foundation.

Label equipment ground buss and neutral buss.

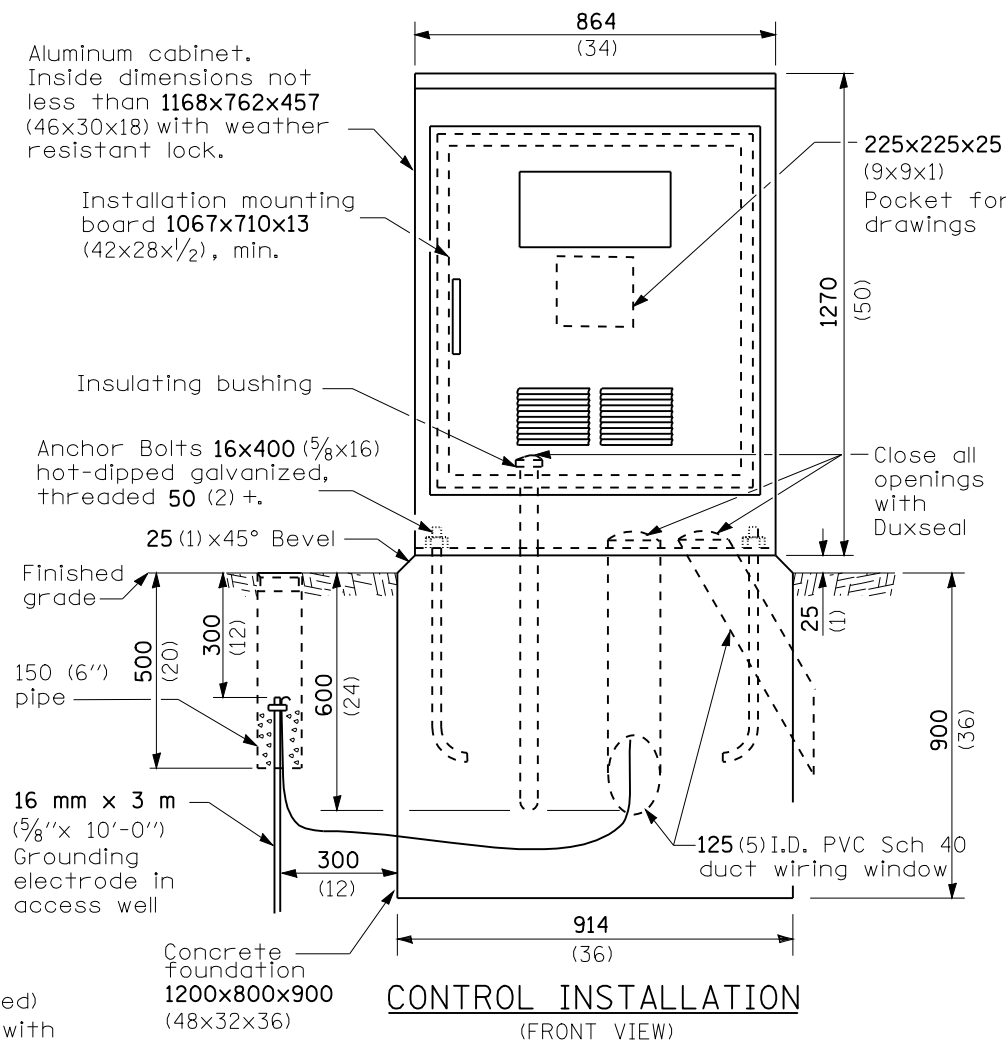
BASE MOUNT DETAIL

REVISIONS	
NAME	DATE

ILLINOIS DEPARTMENT OF TRANSPORTATION
 LIGHTING DETAILS -8
 CONTROL INSTALLATION
 LGT005
 (84-9) RS-6; (G)Z
 SANGAMON COUNTY, ILLINOIS

SCALE: VERT. HORIZ. DATE: Apr-30-2008 01:57:47PM DRAWN BY: CHECKED BY:

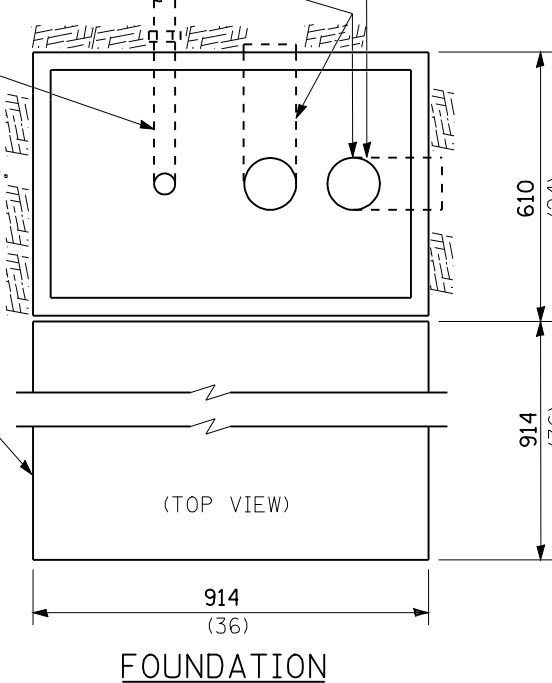
Corrected 1/19/06



CONTROL INSTALLATION (FRONT VIEW)

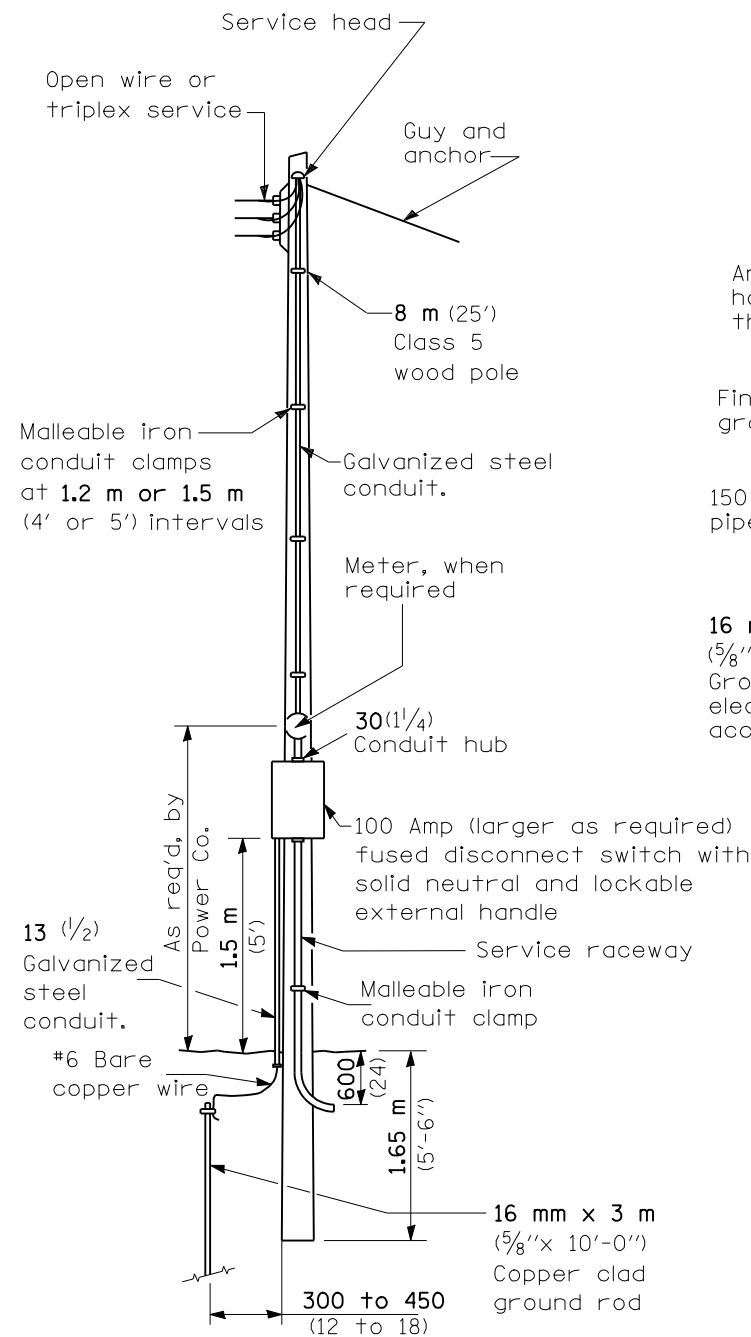
125 (5) I.D. PVC Sch 40 duct wiring window. Install a second wiring window as needed.

Service Raceway - Rigid metal conduit, intermediate conduit and schedule 80 nonmetallic conduit are equally acceptable.



FOUNDATION

Concrete pad 914x914x200 (36x36x8) to be placed in front of control cabinet.



SERVICE POLE

PROJECT SPECIFIC NOTE

Electric service installations will be connected to cwp and will be located in the vicinity of each lighting controller. Not shown on plan sheets.