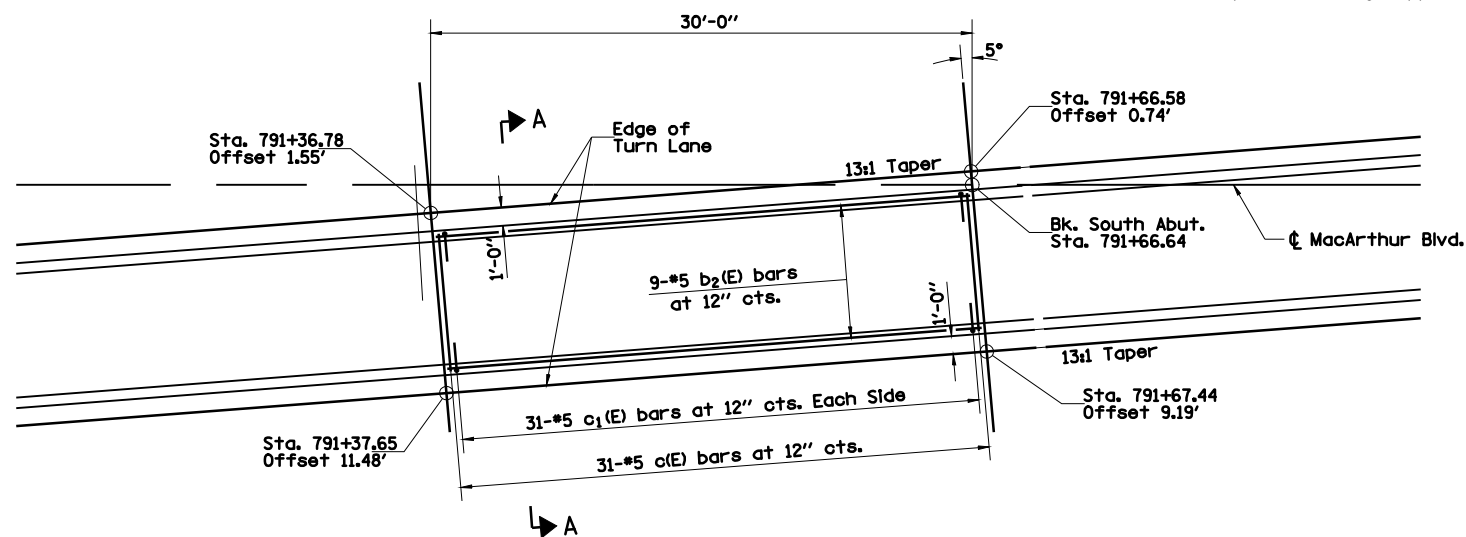
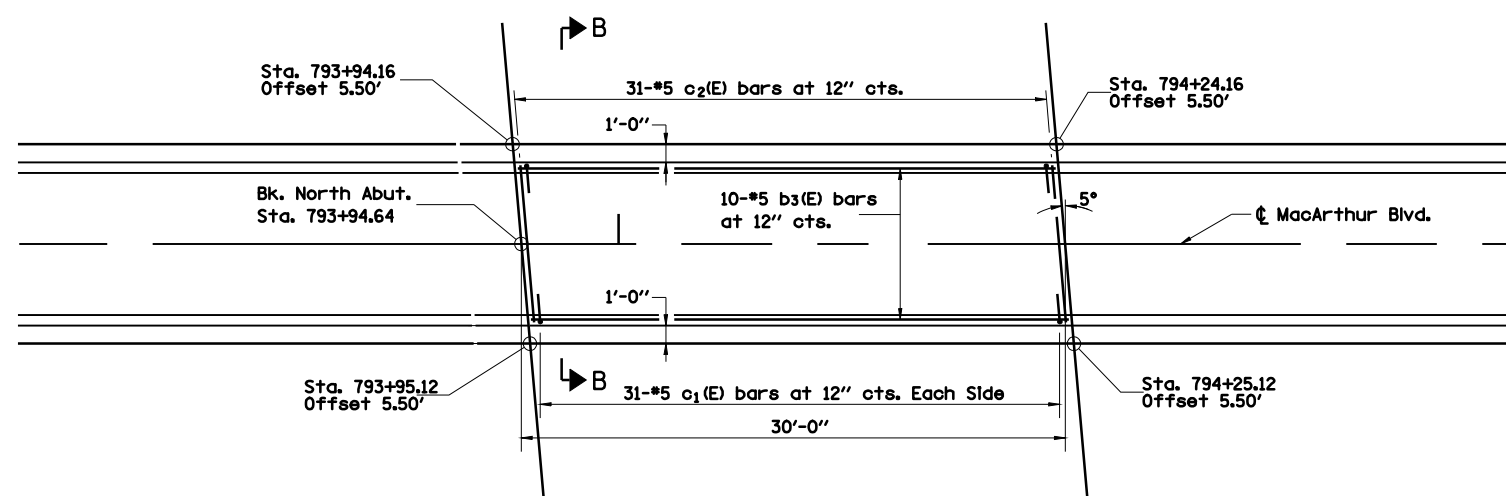
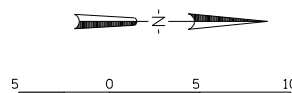


FAU ROUTE	SECTION	COUNTY	TOTAL SHEETS	SHEET NO.
8071	*	SANGAMON	425	303
STA.		TO STA.		
FED. ROAD DIST. NO.		ILLINOIS	FED. AID PROJECT	
(84-9) RS-6; (G)Z *				

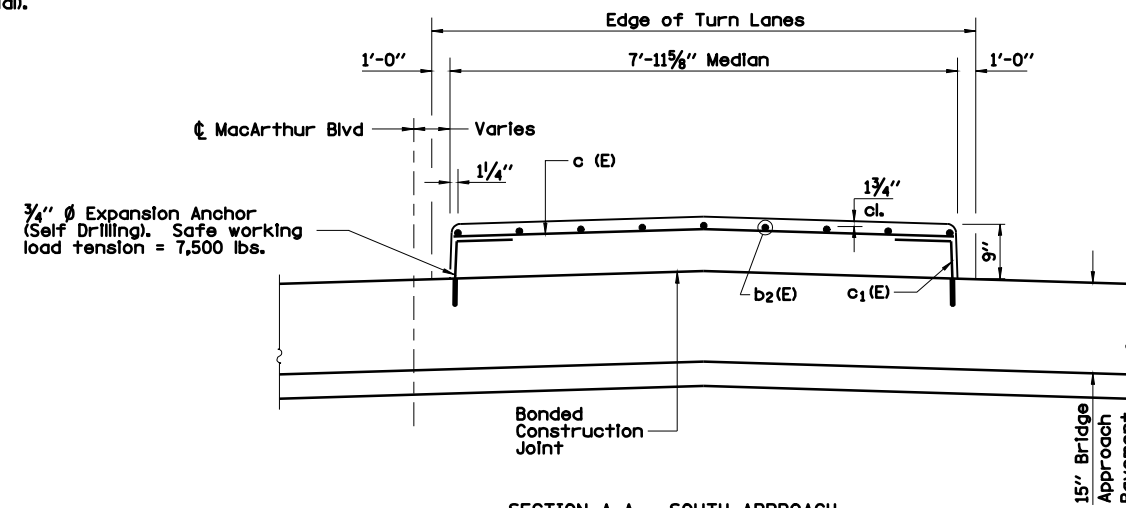
**Notes:**  
 Reinforcement bars designated (E) shall be Epoxy Coated.  
 Bars indicated 31x2-#5 etc. indicates 31 lines of bars with 2 lengths per line.  
 For Bridge Approach Pavement Details See Std. 420401.  
 All concrete, reinforcement, expansion anchors, and other items which are cast into the Bridge Approach Pavement Median, shall be included in the contract unit price per Sq. Yd. of Bridge Approach Pavement (Special).



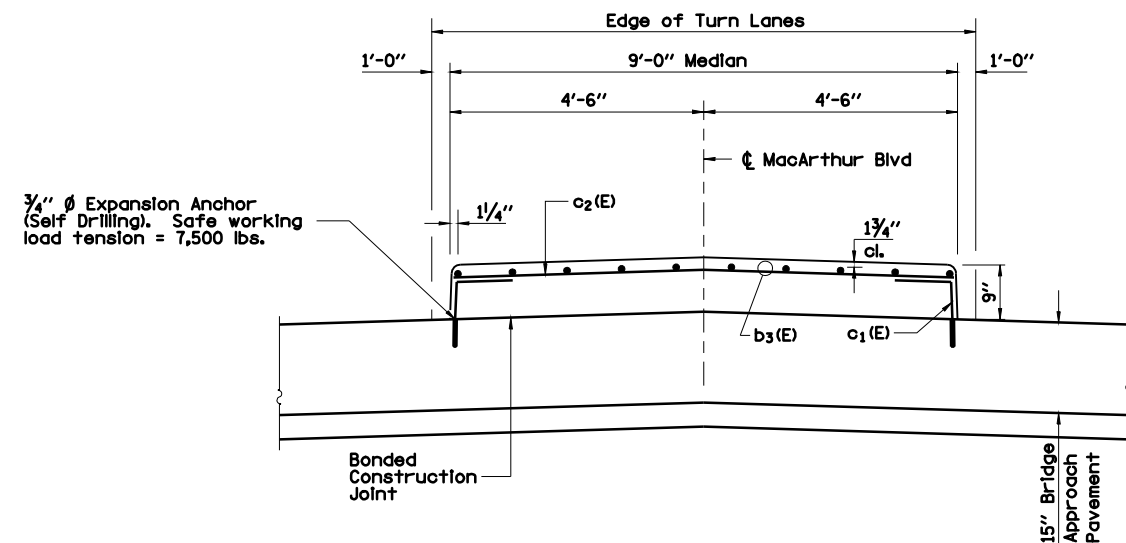
MEDIAN PLAN - SOUTH APPROACH  
 MACARTHUR BLVD. OVER I-72



MEDIAN PLAN - NORTH APPROACH  
 MACARTHUR BLVD. OVER I-72



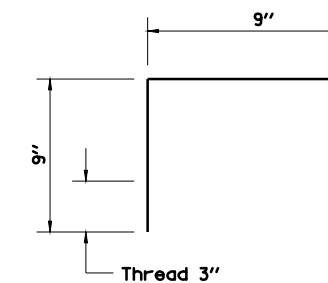
SECTION A-A - SOUTH APPROACH  
 (Not to scale)



SECTION B-B - NORTH APPROACH  
 (Not to scale)

**BILL OF MATERIAL**

Bar	No.	Size	Length	Shape
b2(E)	9	#5	29'-6"	—
b3(E)	10	#5	29'-8"	—
c(E)	31	#5	7'-5"	—
c1(E)	124	#5	1'-6"	┌
c2(E)	31	#5	8'-6"	—



REVISIONS	
NAME	DATE

ILLINOIS DEPARTMENT OF TRANSPORTATION  
 BRIDGE APPROACH PAVEMENT  
 MEDIAN DETAILS -1  
 SECTION  
 (84-9) RS-6; (G)Z  
 SANGAMON COUNTY, ILLINOIS

SCALE: VERT. \_\_\_\_\_  
 HORIZ. \_\_\_\_\_  
 DATE: Mar-19-2008 03:24:33PM  
 DRAWN BY: RAH  
 CHECKED BY: MNM



LAYOUT	CLG	09/17/07
DRAWN	CLG	09/17/07
REVIEWED	MNM	09/17/07