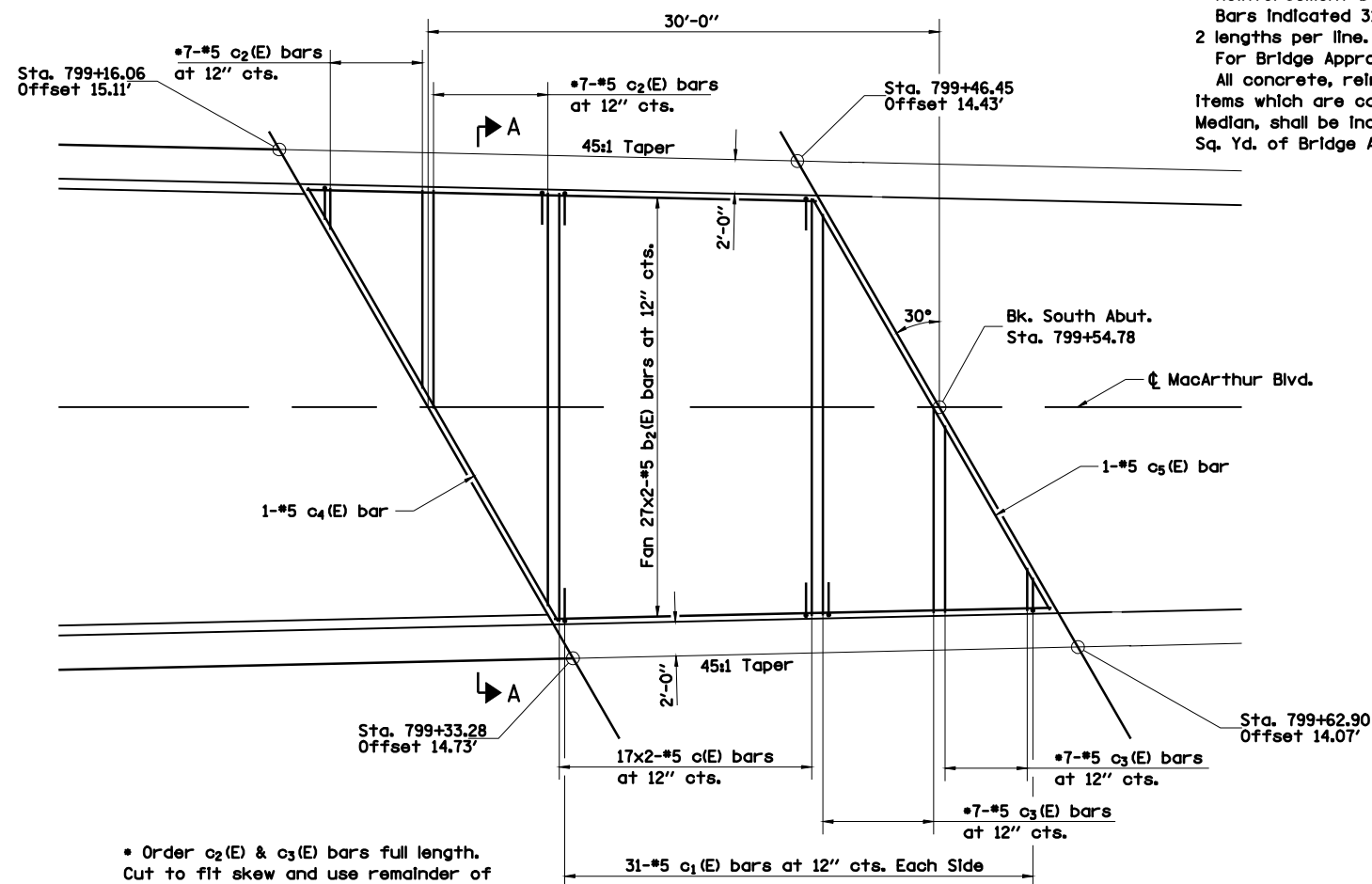


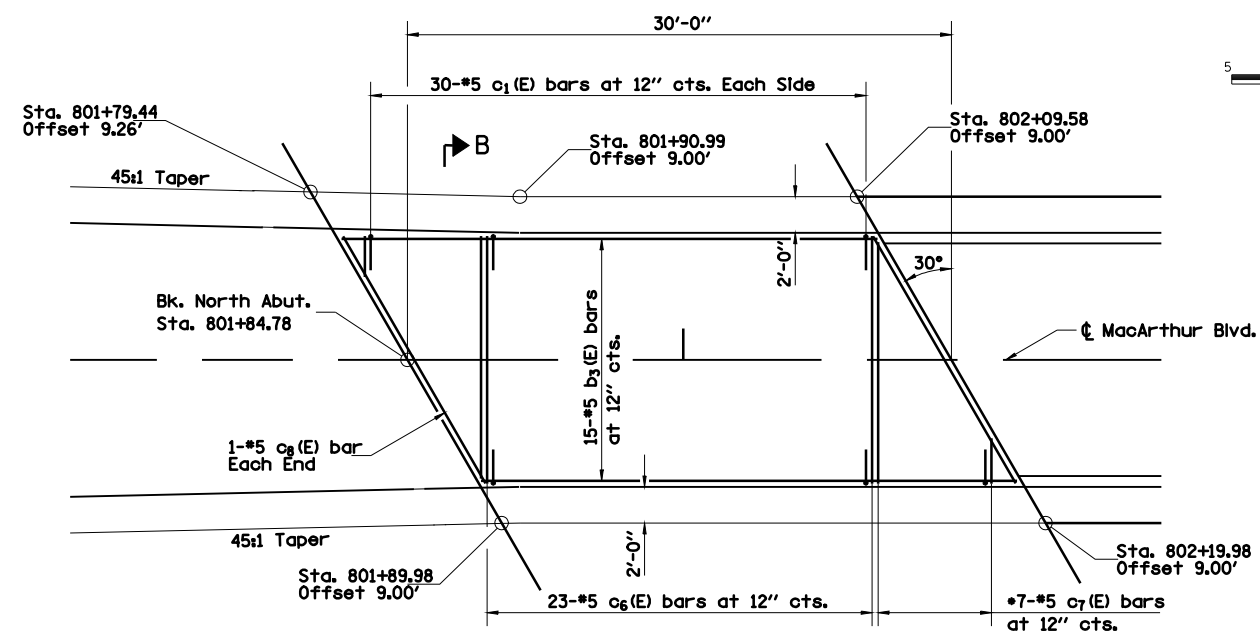
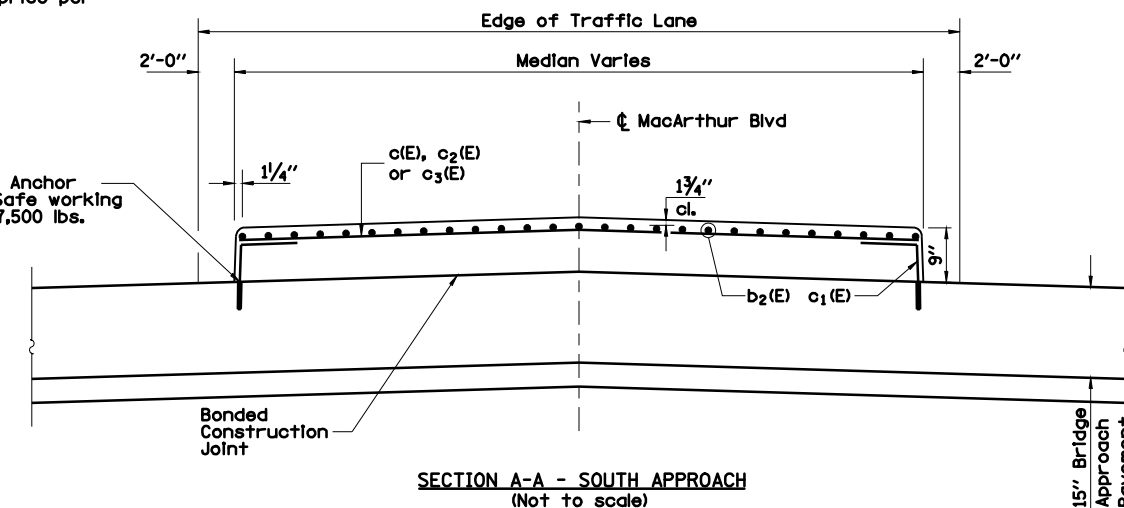
FAU ROUTE	SECTION	COUNTY	TOTAL SHEETS	SHEET NO.
8071	*	SANGAMON	425	304
STA.		TO STA.		
FED. ROAD DIST. NO.	ILLINOIS	FED. AID PROJECT		
* 02-00382-02-PV				

Notes:
 Reinforcement bars designated (E) shall be Epoxy Coated.
 Bars indicated 31x2-#5 etc. indicates 31 lines of bars with 2 lengths per line.
 For Bridge Approach Pavement Details See Std. 420401.
 All concrete, reinforcement, expansion anchors, and other items which are cast into the Bridge Approach Pavement Median, shall be included in the contract unit price per Sq. Yd. of Bridge Approach Pavement (Special).



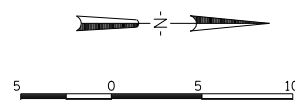
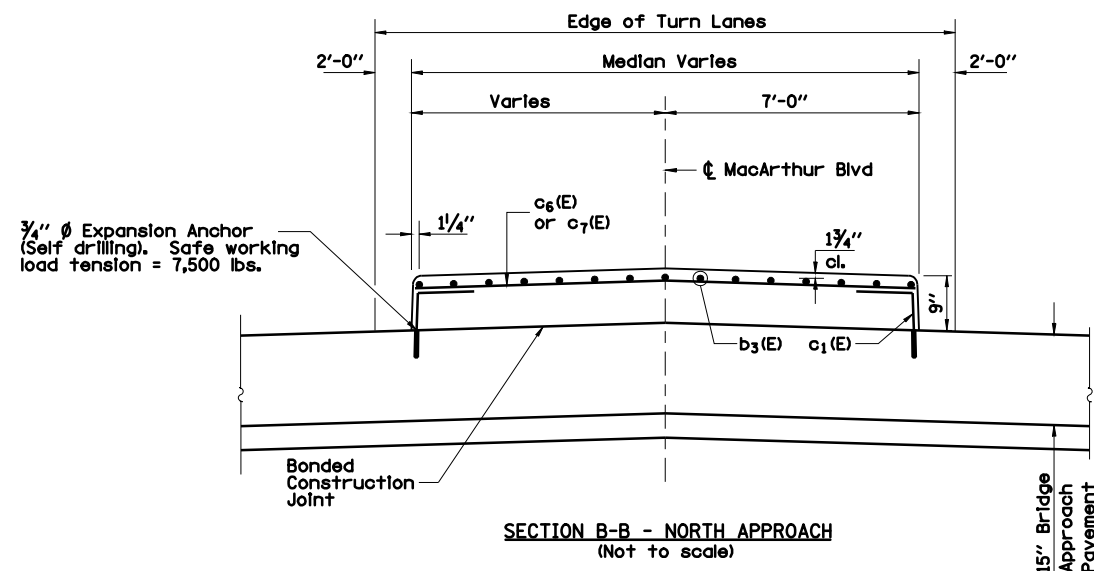
* Order c₂(E) & c₃(E) bars full length. Cut to fit skew and use remainder of bars in same end of median.

**MEDIAN PLAN - SOUTH APPROACH
 MACARTHUR BLVD. OVER N.S. R.R.**



* Order c₇(E) bars full length. Cut to fit skew and use remainder of bars in same end of median.

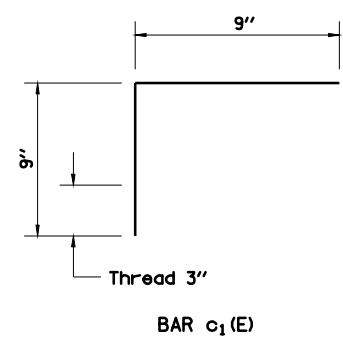
**MEDIAN PLAN - NORTH APPROACH
 MACARTHUR BLVD. OVER N.S. R.R.**



BILL OF MATERIAL

Bar	No.	Size	Length	Shape
b ₂ (E)	54	#5	16'-3"	—
b ₃ (E)	15	#5	29'-8"	—
c(E)	34	#5	13'-9"	—
c ₁ (E)	122	#5	1'-6"	┌
c ₂ (E)	7	#5	24'-3"	—
c ₃ (E)	7	#5	24'-0"	—
c ₄ (E)	1	#5	29'-3"	—
c ₅ (E)	1	#5	27'-9"	—
c ₆ (E)	23	#5	13'-6"	—
c ₇ (E)	7	#5	13'-3"	—
c ₈ (E)	2	#5	15'-8"	—

MIN. BAR LAPS
 #5 bar 2'-2"



REVISIONS	
NAME	DATE

ILLINOIS DEPARTMENT OF TRANSPORTATION
 BRIDGE APPROACH PAVEMENT
 MEDIAN DETAILS -2
 SECTION
 (84-9) RS-6; (G)Z
 SANGAMON COUNTY, ILLINOIS

SCALE: VERT. HORIZ.
 DATE: Mar-19-2008 03:24:38PM
 DRAWN BY: CHECKED BY:



LAYOUT	CLG	09/17/07
DRAWN	CLG	09/17/07
REVIEWED	JMM	09/17/07