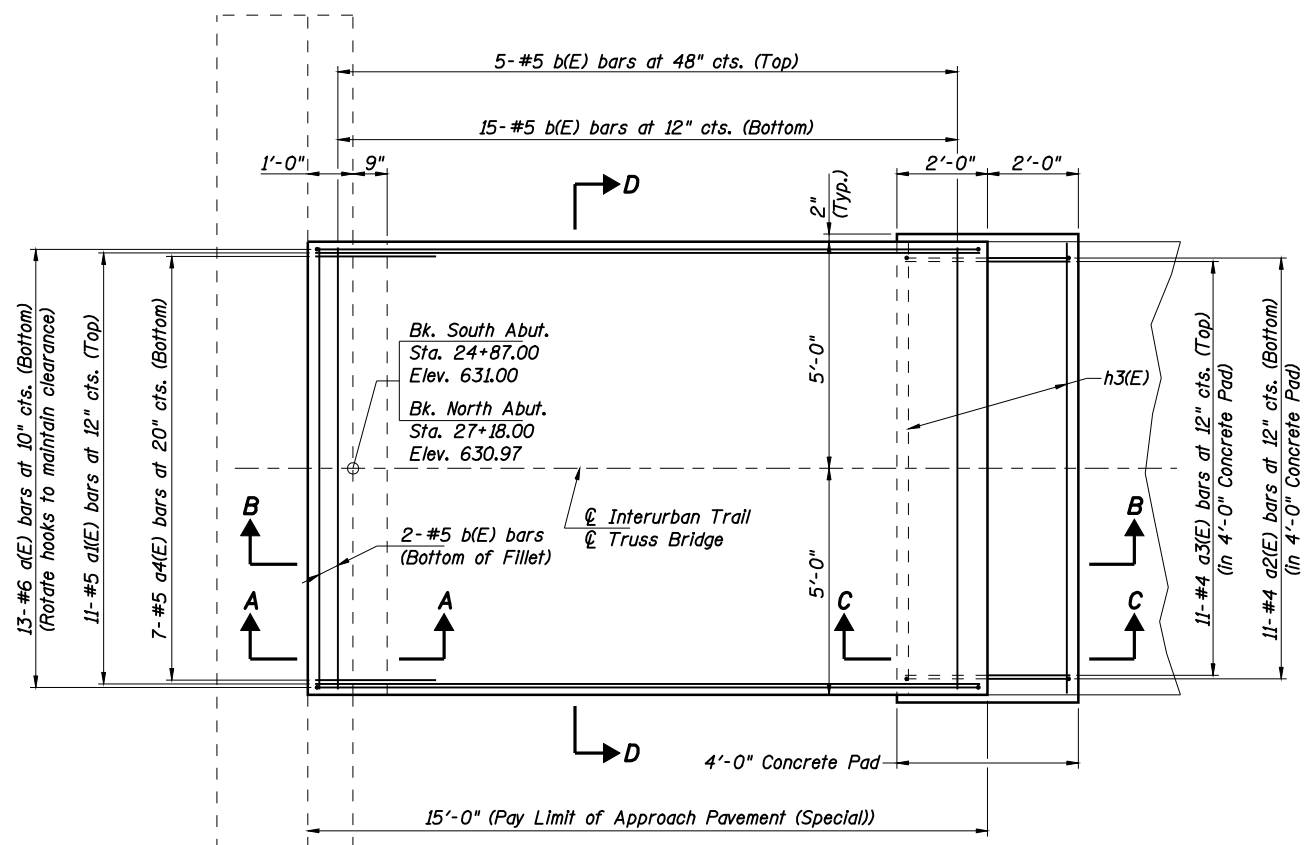
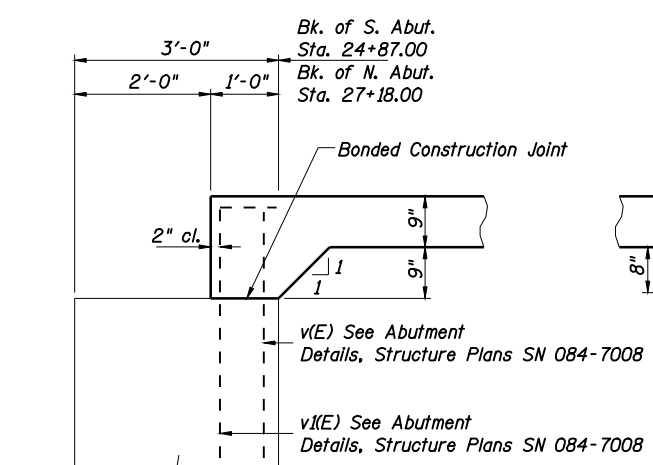


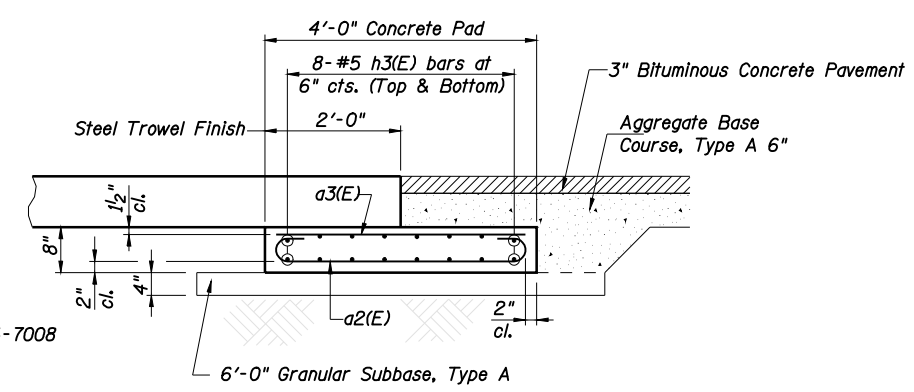
FAU ROUTE	SECTION	COUNTY	TOTAL SHEETS	SHEET NO.
8071	*	SANGAMON	425	305
STA.		TO STA.		
FED. ROAD DIST. NO.		ILLINOIS	FED. AID PROJECT	
(84-9) RS-6; (G)Z *				



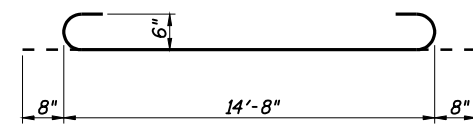
PLAN VIEW



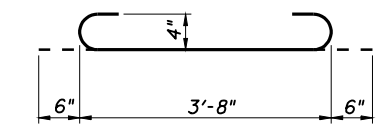
SECTION A-A



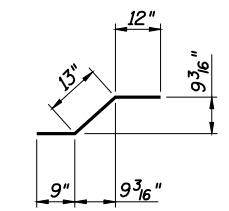
SECTION C-C



BAR a(E)



BAR a2(E)



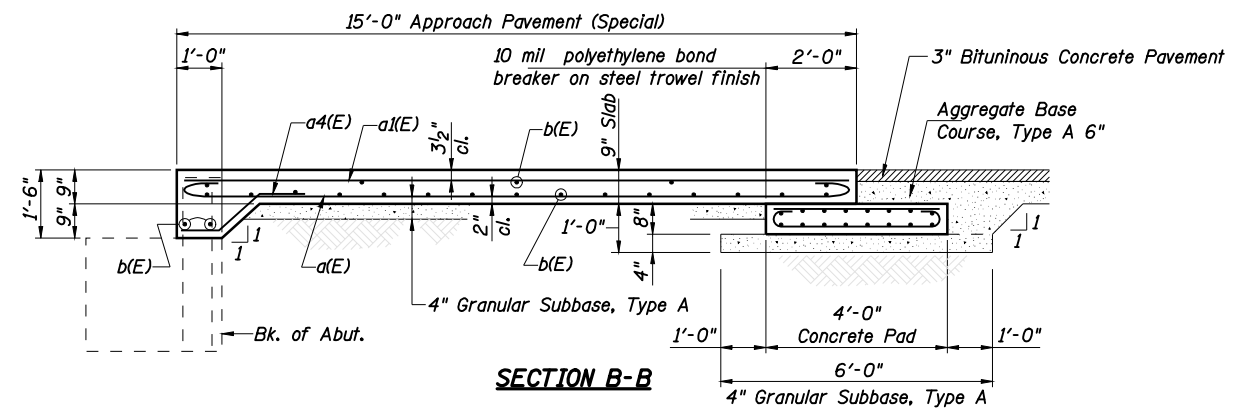
BAR a4(E)

STRAIGHT BARS

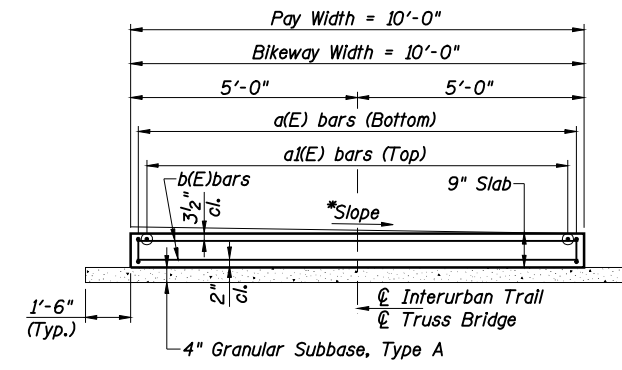
Bar	Length
a1(E)	14'-8"
a3(E)	3'-8"
b(E)	9'-8"
h3(E)	10'-0"

DESIGN STRESSES

f'c = 3,500 psi
 fy = 60,000 psi (reinf.)
 n = 8.5



SECTION B-B



SECTION D-D

*Transition Slope from 2% to 0% over 15' length

NOTE:
 Cost of 4" Granular Subbase, Type A Shall be included with Approach Pavement (Special)

REVISIONS	
NAME	DATE

ILLINOIS DEPARTMENT OF TRANSPORTATION
 APPROACH PAVEMENT SPECIAL
 INTERURBAN TRAIL OVER N.S. R.R.
 SECTION
 (84-9) RS-6; (G)Z
 SANGAMON COUNTY, ILLINOIS
 SCALE: VERT. HORIZ.
 DATE: Mar-19-2008 03:24:40PM
 DRAWN BY: RAH
 CHECKED BY: MNM



Mar-19-2008 03:24:40PM
 \$FILE\$
 LAYOUT RAH 09/17/07
 DRAWN RAH 09/17/07
 REVIEWED MNM 09/17/07