

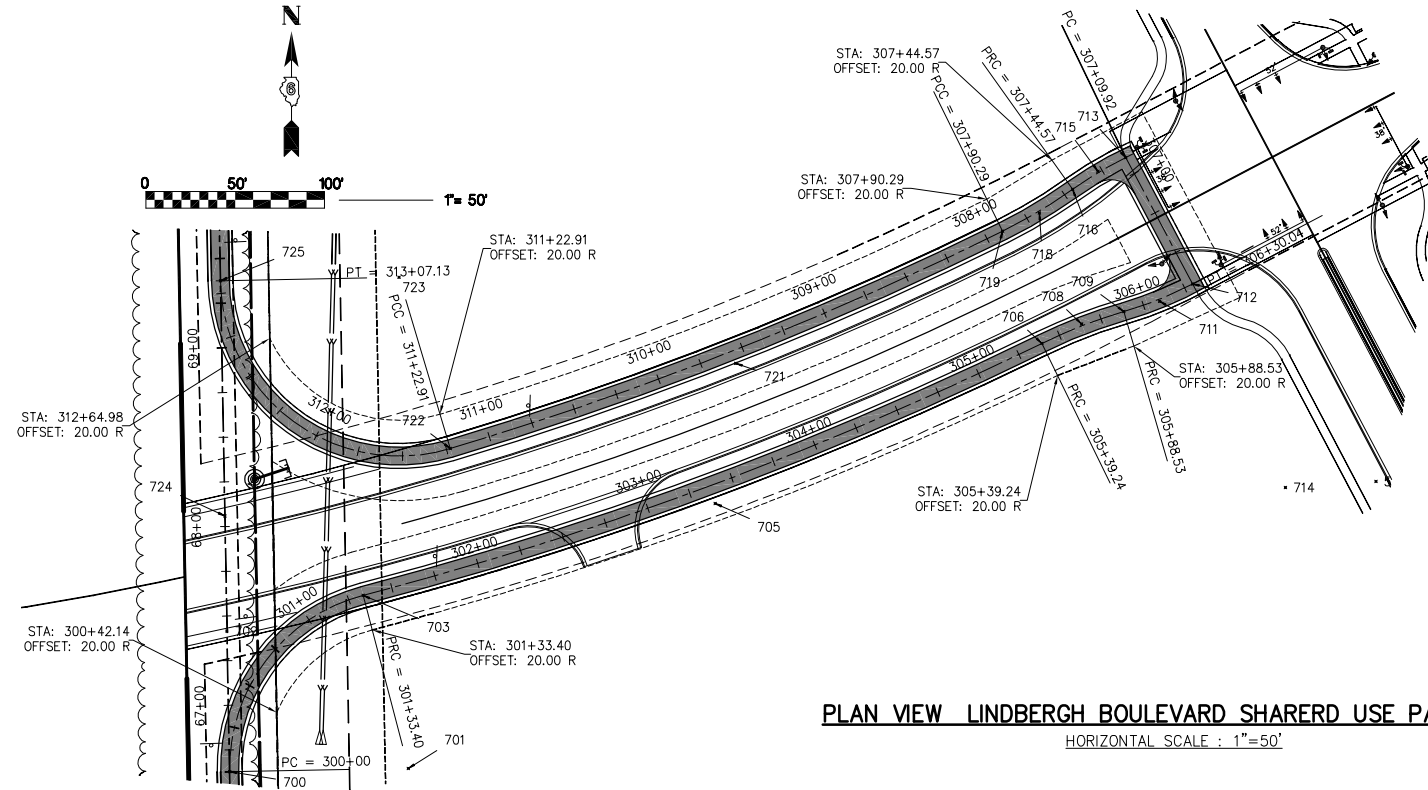
F.A. RTE.	SECTION	COUNTY	TOTAL SHEETS	SHEET NO.
*	**	SANGAMON	425	391
STA.		TO STA.		
FED. ROAD DIST. NO. -		ILLINOIS FED. AID PROJECT		

- FAI 72 (I-72) AND FAU 8071 (MACARTHUR BOULEVARD)
- SECTION (84-9) RS-6; (G)Z

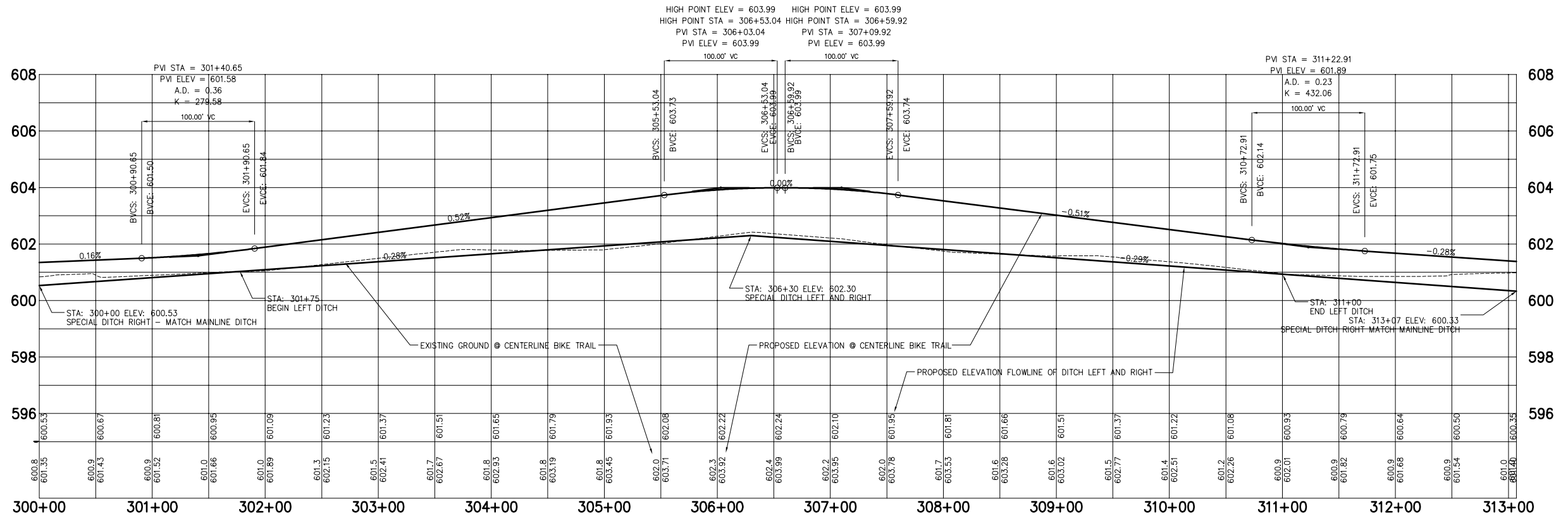
PLAN	SURVEYED	DATE
	PLOTTED	BY
	CHECKED	
	ALIGNED	
	AS BUILT	
	CADD FILE NAME	
	NO.	

PROFILE	SURVEYED	DATE
	PLOTTED	BY
	CHECKED	
	ALIGNED	
	AS BUILT	
	STRUCTURE NOTATIONS CHKD	
	NO.	

PLOT DATE = #DATE\*  
 FILE NAME = #FILE\*  
 PLOT SCALE = #SCALE\*  
 USER NAME = #USER\*



PLAN VIEW LINDBERGH BOULEVARD SHARED USE PATH  
 HORIZONTAL SCALE : 1"=50'



PROFILE VIEW LINDBERGH BOULEVARD SHARED USE PATH  
 HORIZONTAL SCALE : 1"=2'

REVISIONS	
NAME	DATE

**SHIVE HATTERY**  
 Cedar Rapids, IA • Iowa City, IA • Des Moines, IA  
 Moline, IL • Bloomington, IL • Chicago, IL

SHIVE-HATTERY, INC. 2103 EASTLAND DRIVE BLOOMINGTON, ILLINOIS 61702  
 PHONE (309) 662-8992 FAX (309) 662-5808  
 http://www.shive-hattery.com  
 ILLINOIS FIRM NUMBER: 184-000214

ILLINOIS DEPARTMENT OF TRANSPORTATION  
 LEGACY POINT SHARED USE PATH  
**PLAN & PROFILE**  
 LINDBERGH LOOP SHARED USE PATH

SCALE: VERT.      DRAWN BY: JAB  
 HORIZ.              CHECKED BY: DWS  
 DATE: 3/6/08