

STATE OF ILLINOIS
DEPARTMENT OF TRANSPORTATION
DIVISION OF HIGHWAYS

PROPOSED HIGHWAY PLANS

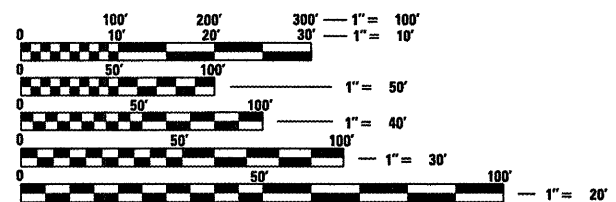
FAP ROUTE 662 (IL 4-VETERANS PARKWAY)
2-2(RS) & 3-1, 2(RS-10, TS-5)
PROJECT: ACNHF-ACF-0662 (061)
SANGAMON COUNTY
C-96-512-08



LOCATION OF SECTION INDICATED THUS: [shaded area]

SEE SHEET NO. 2 FOR
INDEX OF SHEETS AND
LIST OF ILLINOIS DOT STANDARDS

AVERAGE DAILY TRAFFIC
20,000-35,900 (2005)
PV=92.8% SV=2.2% MV=5.0%



FULL SIZE PLANS HAVE BEEN PREPARED USING STANDARD
ENGINEERING SCALES. REDUCED SIZED PLANS WILL NOT
CONFORM TO STANDARD SCALES. IN MAKING MEASUREMENTS
ON REDUCED PLANS, THE ABOVE SCALES MAY BE USED.

J.U.L.I.E.
JOINT UTILITY LOCATION INFORMATION FOR EXCAVATION
1-800-892-0123
OR 811

LENGTH OF SECTION	GROSS		NET	
	FEET	MILES	FEET	MILES
PART A	28,118.77	5.326	27,121.19	5.137
PART B	3,720.00	0.705	1,270.00	0.241
PART C	925.00	0.241	259.00	0.049
TOTAL	32,763.77	6.272	28,650.19	5.427

BEGIN SECTION
STA 365+00

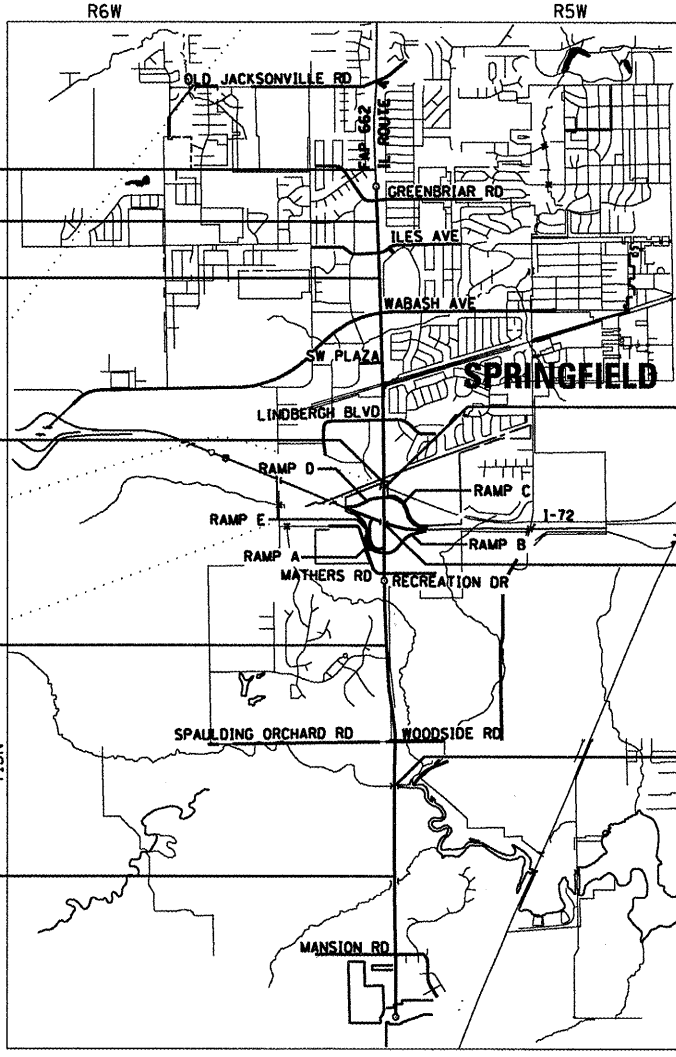
STA EQUATION
STA 369+98.96 BK=STA 370+00.00 AH

STA EQUATION
STA 390+01.68 BK=STA 389+96.12 AH

STA EQUATION
STA 478+01.13 BK=STA 478+01.40 AH

STA EQUATION
STA 556+48.75 BK=STA 556+54.47 AH

END SECTION
STA 646+20.24



LOCATION MAP PART A

GROSS LENGTH OF PART A: 28,118.77 FEET = 5.326 MILES
NET LENGTH OF PART A: 27,121.19 FEET = 5.137 MILES

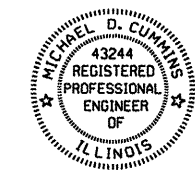


SEE SHEET 2 FOR
PARTS B & C LOCATION MAPS

OMISSIONS
NB STA 479+33.73 TO STA 484+57.97
SB STA 479+65.35 TO STA 484+46.26
SN 084-0135 (NB) SN 084-0134 (SB)
SN 084-0188 (NB) SN 084-0189 (SB)
EXTEND PARAPETS SN 084-0134
IL 4 OVER NS & GW RR

OMISSIONS
NB STA 494+70.23 TO STA 497+37.90
SB STA 494+33.07 TO STA 497+00.74
SN 084-0136 (NB) SN 084-0137 (SB)
EXTEND PARAPETS SN 084-0136 & SN 084-0137
IL 4 OVER I-72

OMISSION
STA 592+68.5 TO STA 595+17.50
SN 084-0138 (NB) SN 084-0139 (SB)
EXTEND PARAPETS SN 084-0138 & SN 084-0139
IL 4 OVER LICK CREEK



Michael D. Cummins (3-17-08)
ILLINOIS PROFESSIONAL NO. 43244
(Expires 11/30/09)

CUMMINS ENGINEERING CORPORATION
SPRINGFIELD, ILLINOIS

STATE OF ILLINOIS
DEPARTMENT OF TRANSPORTATION
DIVISION OF HIGHWAYS

SUBMITTED *Mar. 20, 2008*

Christine M. Reed
DEPUTY DIRECTOR OF HIGHWAYS, REGION ENGINEER

May 9, 2008
Eric E. Hamm
ENGINEER OF DESIGN AND ENVIRONMENT

May 9, 2008
Christine M. Reed
DIRECTOR OF HIGHWAYS, CHIEF ENGINEER

PRINTED BY THE AUTHORITY
OF THE STATE OF ILLINOIS

PROJECT ENGINEER - JOHN NEGANGARD (217)782-6990
SQUAD LEADER - MARK DUST (217)785-0597
CONTRACT NO. 72889