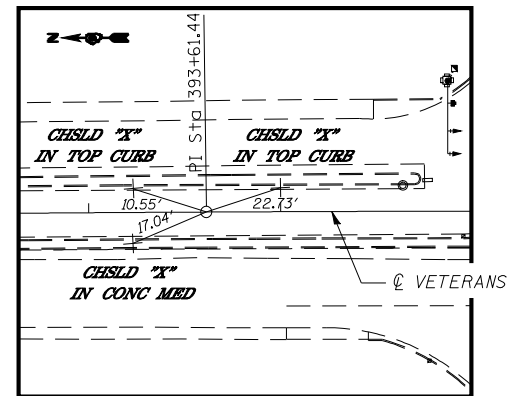
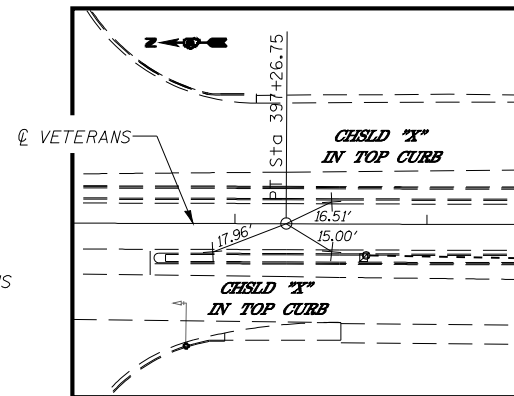


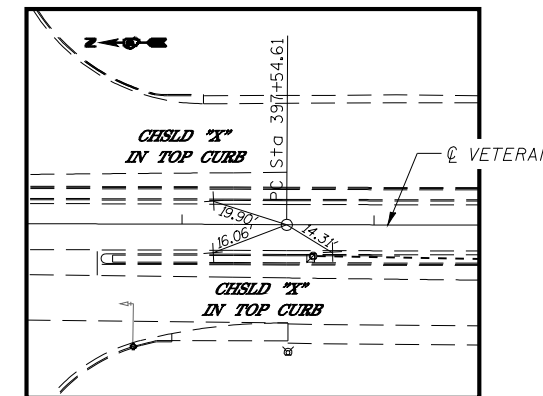
P.T. STA. 390+01.67 BACK
P.C. STA 389+96.12 AHEAD
#5 REBAR WITH CAP



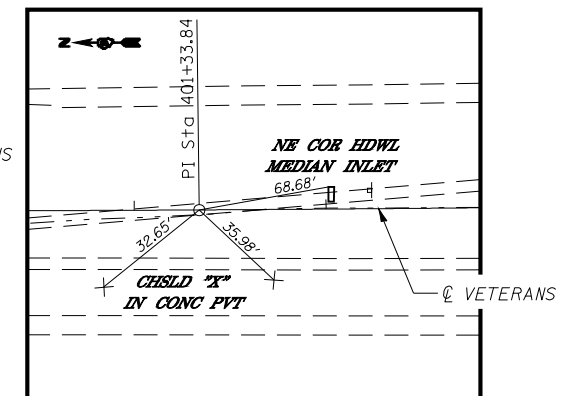
P.I. STA. 393+61.44
STARDRILL IN CHSLD "X"



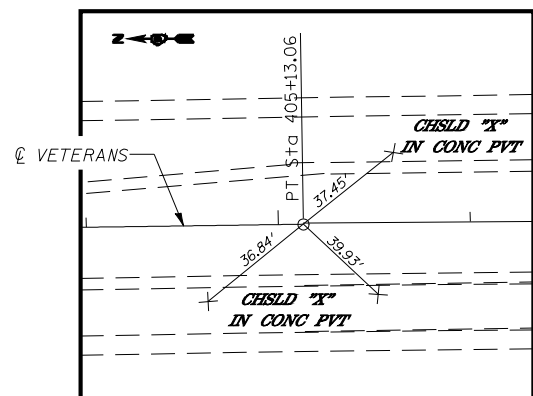
P.T. STA. 397+26.75
STARDRILL IN CHSLD "X"



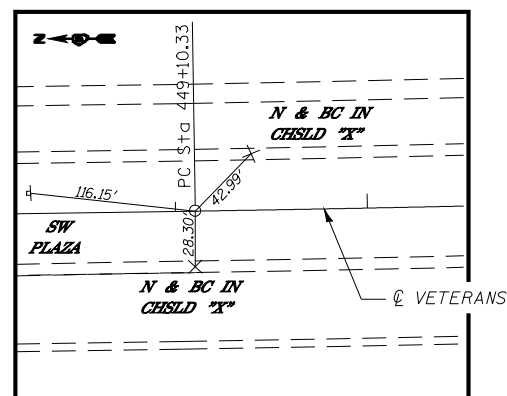
P.C. STA. 397+54.61
STARDRILL IN CHSLD "X"



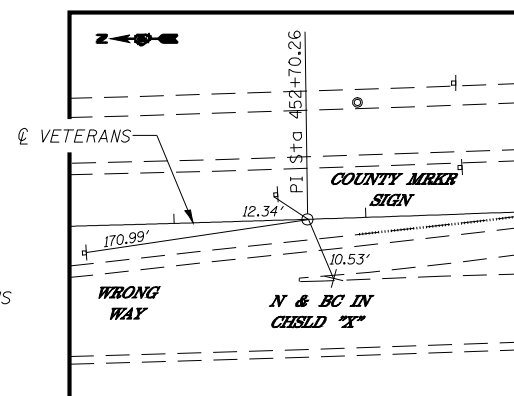
P.I. STA. 401+33.84
#5 REBAR WITH IDOT CAP



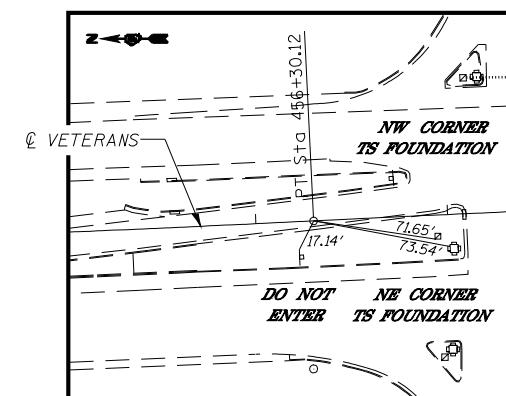
P.T. STA. 405+13.06
#5 REBAR WITH IDOT CAP



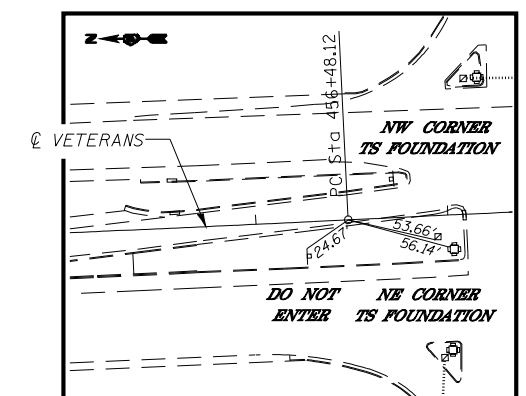
P.C. STA. 449+10.33
#4 REBAR WITH IDOT CAP



P.I. STA. 452+70.26
#4 REBAR WITH IDOT CAP



P.T. STA. 456+30.12
STARDRILL IN CHSLD "X"



P.C. STA. 456+48.12
STARDRILL IN CHSLD "X"

CUMMINS ENGINEERING CORPORATION		JOB - 2200	DESIGNED - NAK	REVISED -
FILE NAME =		FILE - sht-ATB.dgn	DRAWN - AJH	REVISED -
USER NAME = laughlinr1		CHECKED - NAK	DATE - 3/15/2008	REVISED -
C:\Projects\d652204\cummins_final\d67289-sht-otb.dgn				
PLOT SCALE = 100.0000' / IN.				
PLOT DATE = Mar-18-2008 11:38:47AM				

STATE OF ILLINOIS
DEPARTMENT OF TRANSPORTATION

CROSS TIES

SCALE: SHEET NO. OF SHEETS STA. TO STA.

F.A.P. RTE.	SECTION	COUNTY	TOTAL SHEETS	SHEET NO.
662	2-2(RS) & 3-1, 2(RS-10, TS-5)	SANGAMON	181	49
FED. ROAD DIST. NO.			ILLINOIS FED. AID PROJECT	
			CONTRACT NO. 72889	