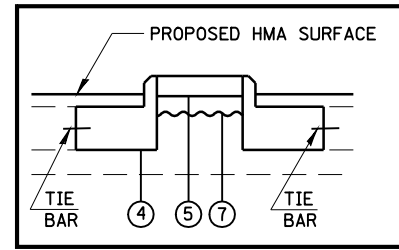
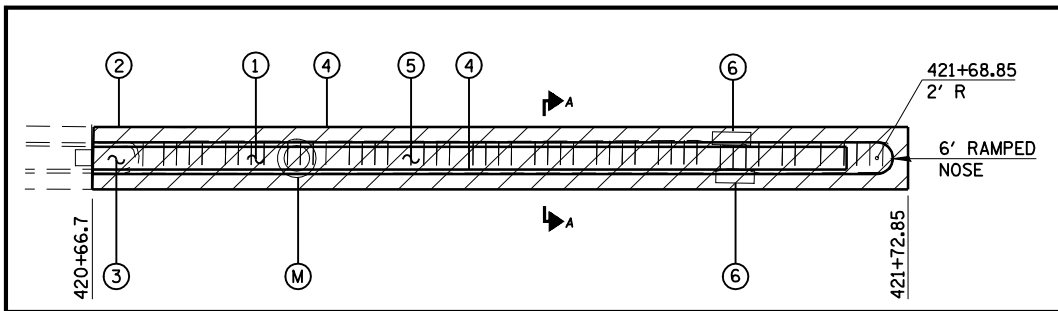
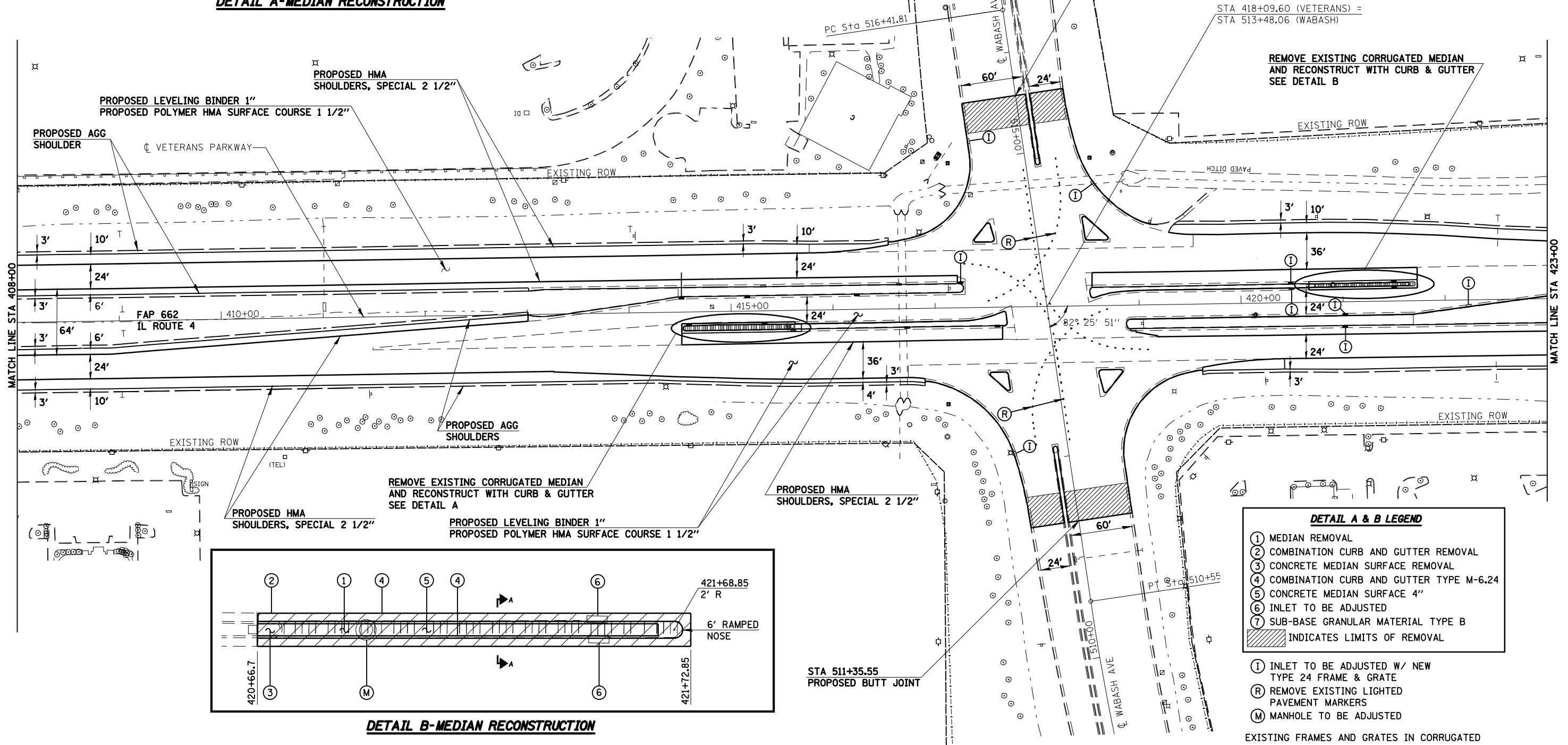


DETAIL A-MEDIAN RECONSTRUCTION



SECTION A-A



DETAIL B-MEDIAN RECONSTRUCTION

DETAIL A & B LEGEND

- ① MEDIAN REMOVAL
- ② COMBINATION CURB AND GUTTER REMOVAL
- ③ CONCRETE MEDIAN SURFACE REMOVAL
- ④ COMBINATION CURB AND GUTTER TYPE M-6.24
- ⑤ CONCRETE MEDIAN SURFACE 4"
- ⑥ INLET TO BE ADJUSTED
- ⑦ SUB-BASE GRANULAR MATERIAL TYPE B
- ▨ INDICATES LIMITS OF REMOVAL

- Ⓘ INLET TO BE ADJUSTED W/ NEW TYPE 24 FRAME & GRATE
- Ⓡ REMOVE EXISTING LIGHTED PAVEMENT MARKERS
- Ⓜ MANHOLE TO BE ADJUSTED

EXISTING FRAMES AND GRATES IN CORRUGATED MEDIANS SHALL BE CAREFULLY REMOVED AND INCORPORATED INTO THE RECONSTRUCTED MEDIAN FRAMES SHALL BE SET TO MATCH THE PROPOSED HMA SURFACE COURSE

CUMMINS ENGINEERING CORPORATION

FILE NAME =	USER NAME = laughlinr1	JOB - 2200
C:\Projects\0652204\Cummins_Final\067289-shr-plan1.dgn	DESIGNED - NAK	FILE - shr-plan1.dgn
PLOT SCALE = 100.0000' / IN.	DRAWN - AJH	REVISIONS
PLOT DATE = Mar-18-2008 11:39:06AM	CHECKED - NAK	REVISIONS
	DATE - 3/15/2008	REVISIONS

**STATE OF ILLINOIS
DEPARTMENT OF TRANSPORTATION**

PLAN VETERANS PARKWAY

SCALE: SHEET NO. OF SHEETS STA. 408+00 TO STA. 423+00

F.A.P. RTE.	SECTION	COUNTY	TOTAL SHEETS	SHEET NO.
662	2-(RS) & 3-1, 2(RS-10, TS-5)	SANGAMON	181	53
CONTRACT NO. 72889				
FED. ROAD DIST. NO. ILLINOIS FED. AID PROJECT				