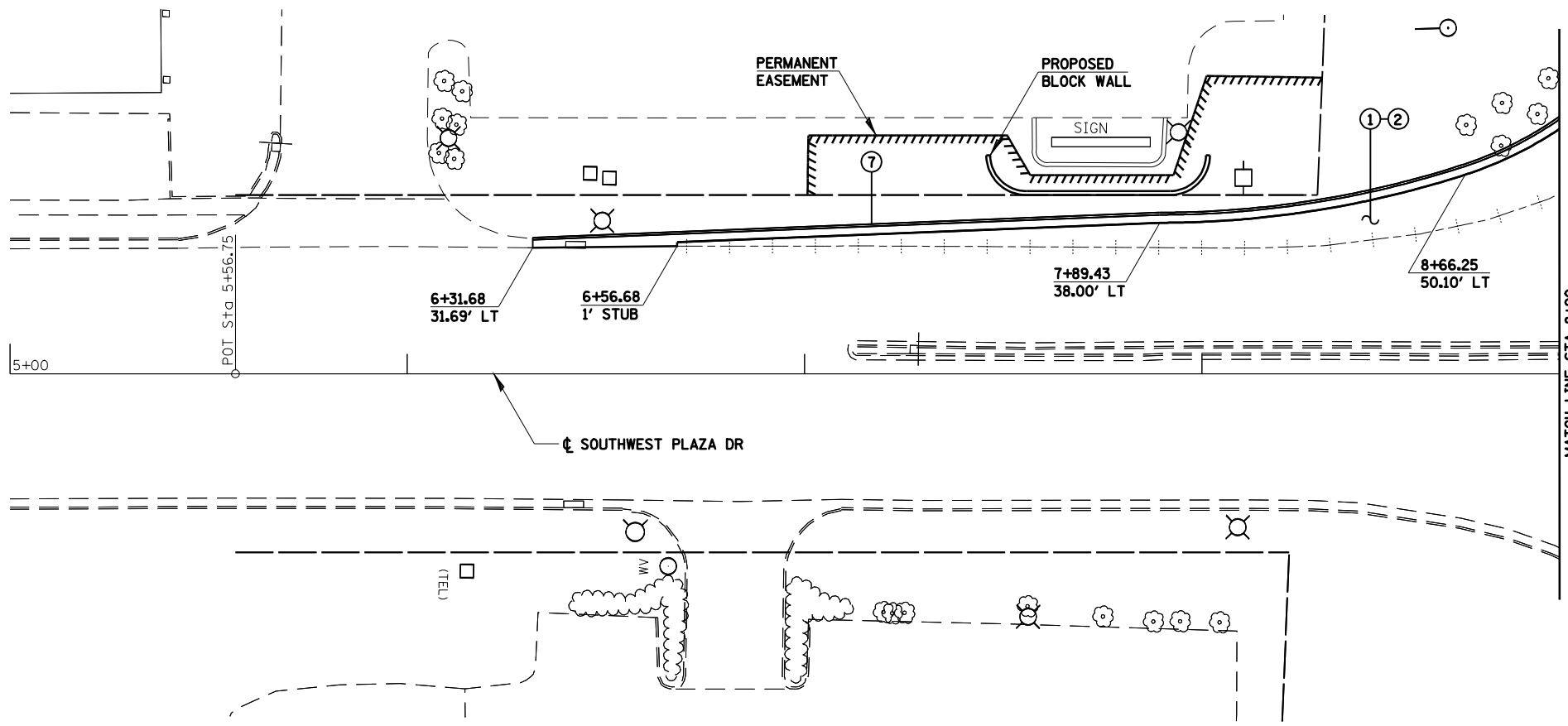


MATCH LINE STA 433+00



MATCH LINE STA 8+90

LEGEND	
①	PCC BASE COURSE 8"
②	SUB-BASE GRANULAR MATERIAL TYPE A 8"
③	COMBINATION CURB AND GUTTER TYPE M-4.06
④	COMBINATION CURB AND GUTTER TYPE M-4.24
⑤	COMBINATION CURB AND GUTTER TYPE M-6.06
⑥	COMBINATION CURB AND GUTTER TYPE M-6.24
⑦	COMBINATION CURB AND GUTTER TYPE B-6.24
⑧	CONCRETE MEDIAN SURFACE 4"
⑨	HOT-MIX ASPHALT SHOULDERS 8"
⑩	HMA BASE COURSE 11"
○	DRUMS OR BARRICADES AT 50' INTERVALS
---	GRouted IN PLACE TIE BARS

CUMMINS ENGINEERING CORPORATION		JOB - 2200
FILE NAME =	USER NAME = laughlinr1	FILE - sht-staglng.dgn
C:\Projects\652204\cummins_final\672899-sht-staglng.dgn	DESIGNED - NAK	REVISED -
PLOT SCALE = 40.0000' / IN.	DRAWN - AJH	REVISED -
PLOT DATE = Mar-18-2008 11:41:01AM	CHECKED - NAK	REVISED -
	DATE - 3/15/2008	REVISED -

**STATE OF ILLINOIS
DEPARTMENT OF TRANSPORTATION**

SOUTHWEST PLAZA DR. STAGE 2 CONSTRUCTION

SCALE: SHEET NO. OF SHEETS STA. TO STA.

F.A.P. RTE.	SECTION	COUNTY	TOTAL SHEETS	SHEET NO.
662	2-2(RS) & 3-1, 2(RS-10, TS-5)	SANGAMON	181	86
FED. ROAD DIST. NO. ILLINOIS FED. AID PROJECT			CONTRACT NO. 72889	