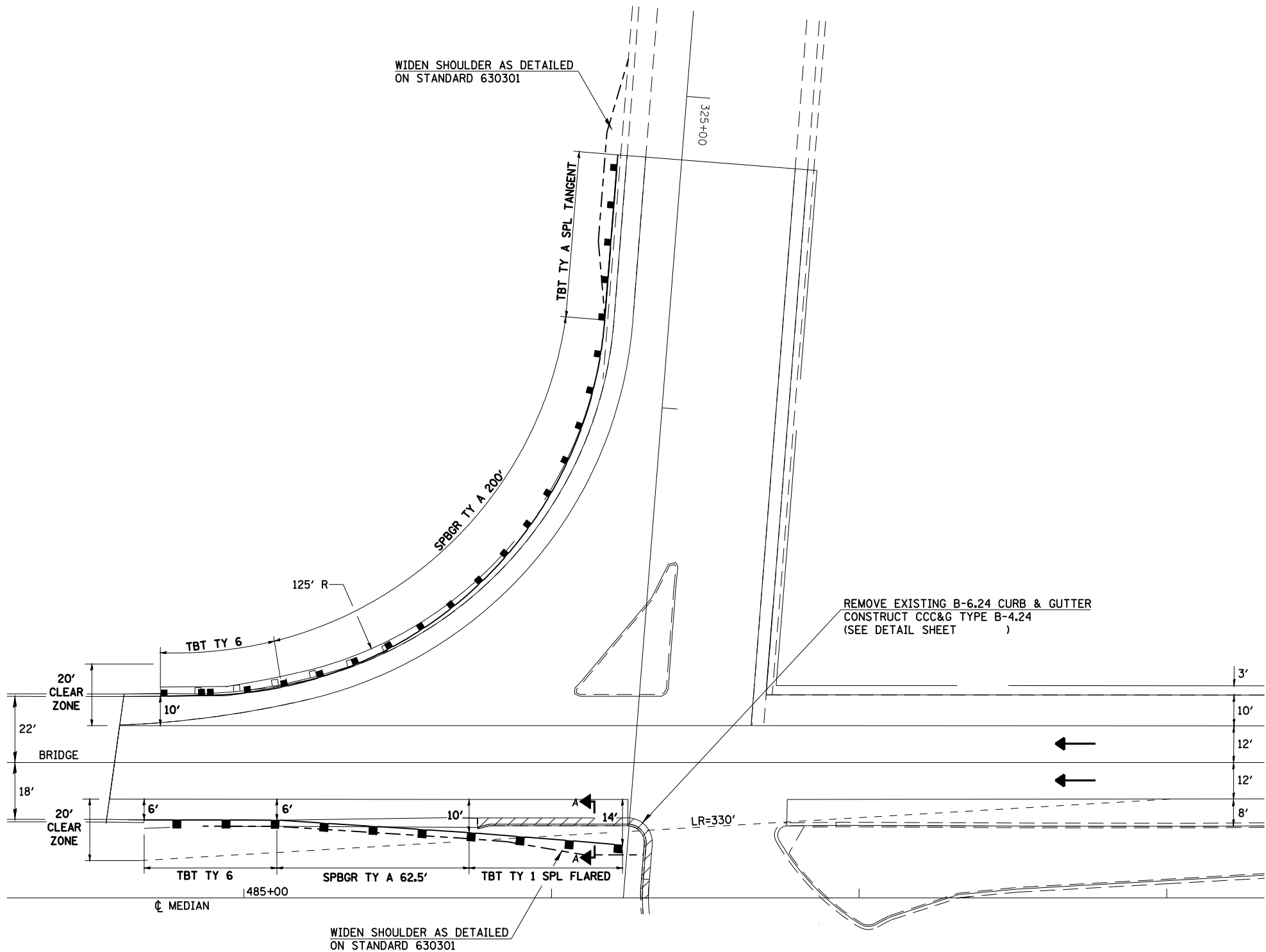


DETAIL OF GUARDRAIL AT DUAL STRUCTURES

SN 084-0188 SOUTH END



RAIL ELEMENTS FOR THE PROPOSED TRAFFIC BARRIER
 TERMINAL TYPE 6 AND STEEL PLATE BEAM
 GUARDRAIL TYPE A SHALL BE FABRICATED WITH
 A 125' RADIUS

CUMMINS ENGINEERING CORPORATION		JOB - 2200
FILE NAME =		FILE - sht-details1.dgn
USER NAME = laughlinr1	DESIGNED - NAK	REVISED -
C:\Projects\d652204\cummins_final\d67289-sht-details1.dgn	DRAWN - AJH	REVISED -
PLOT SCALE = 39.4118 ' / IN.	CHECKED - NAK	REVISED -
PLOT DATE = Mar-18-2008 11:42:51AM	DATE - 3/15/2008	REVISED -

STATE OF ILLINOIS
 DEPARTMENT OF TRANSPORTATION

GUARDRAIL DETAILS

SCALE: SHEET NO. OF SHEETS STA. TO STA.

F.A.P. RTE.	SECTION	COUNTY	TOTAL SHEETS	SHEET NO.
662	2-(RS) & 3-1, 2(RS-10, TS-5)	SANGAMON	181	114
CONTRACT NO. 72889				
FED. ROAD DIST. NO. ILLINOIS FED. AID PROJECT				