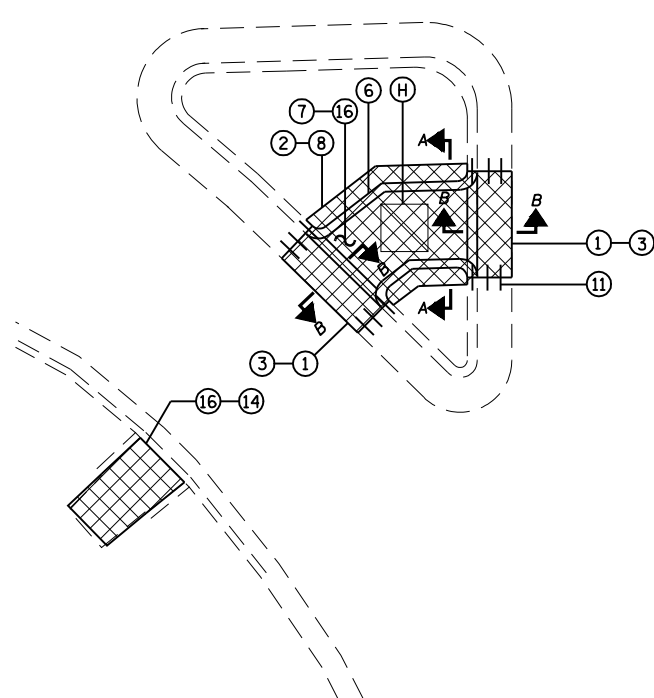
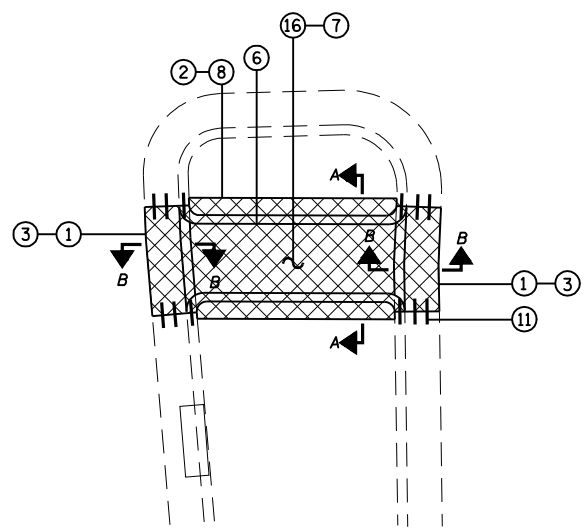


ILES AVE

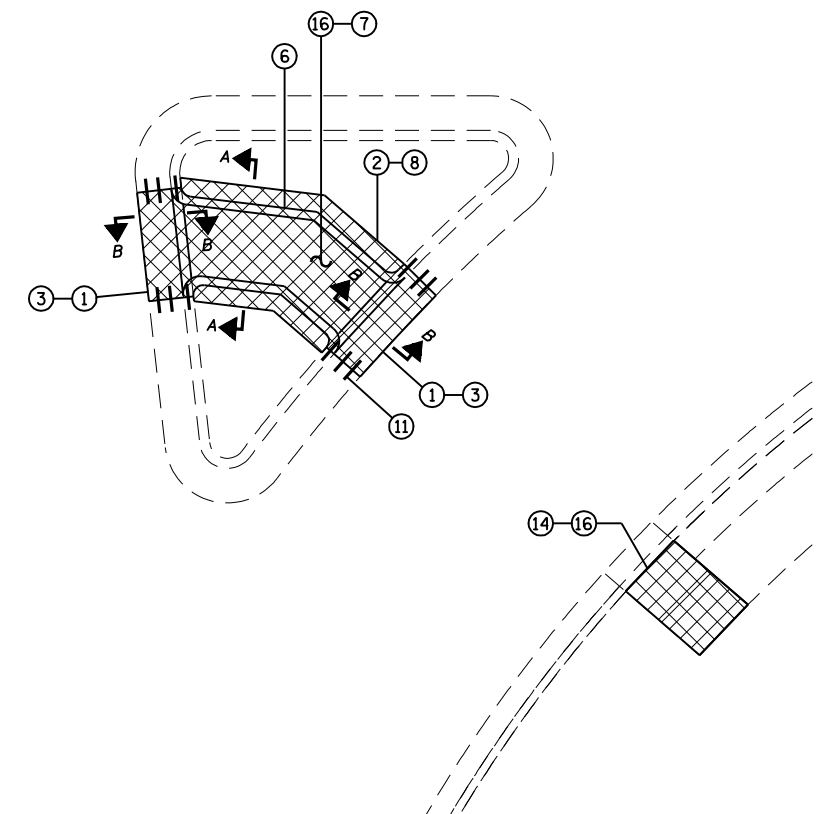
ILES AVE



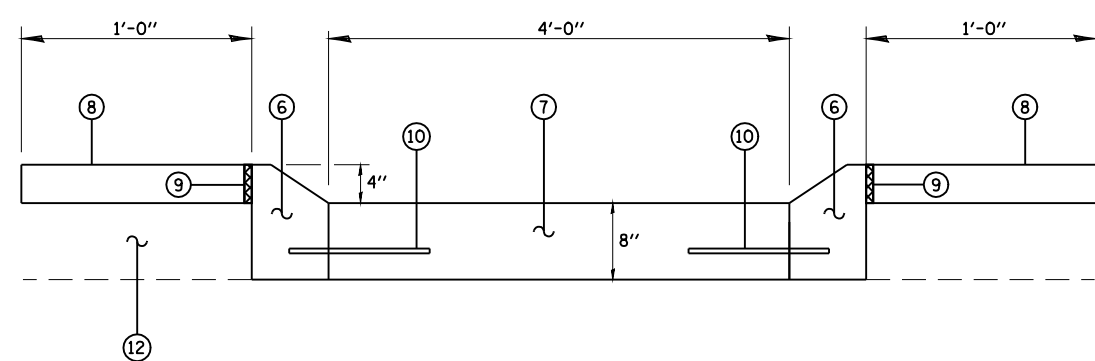
SB IL 4



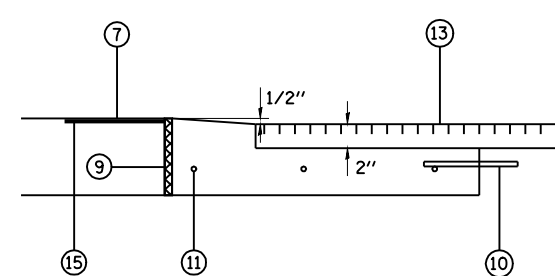
NB IL 4



ILES AVE SIDEWALK PLAN



SECTION A-A



SECTION B-B

LEGEND

- ① EXIST. COMBINATION CURB AND GUTTER TBR
- ② EXIST. 4" CONCRETE MEDIAN SURFACE TBR
- ③ PROP. COMBINATION CURB AND GUTTER TYPE M-6.24
- ④ PROP. COMBINATION CURB AND GUTTER TYPE B-6.24
- ⑤ PROP. COMBINATION CURB AND GUTTER TYPE M-6.06
- ⑥ PROP. CONCRETE CURB TYPE M (SPECIAL)
- ⑦ PROP. P.C.C. SIDEWALK 8"
- ⑧ PROP. CONCRETE MEDIAN SURFACE 4"
- ⑨ PROP. 3/4" PREFORMED EXPANSION JOINT FILLER (TYP.)
- ⑩ PROP. TIE BAR
- ⑪ PROP. DOWEL BAR
- ⑫ PROP. SUB BASE GRANULAR MATERIAL MATERIAL TYPE B
- ⑬ PROP. HMA RESURFACING
- ⑭ PROP. P.C.C. SIDEWALK 4"
- ⑮ PROP. DETECTABLE WARNINGS
- ⑯ SIDEWALK REMOVAL
- ⑰ REBUILD EXISTING SIDEWALKS

▨ INDICATES PCC SURFACE REMOVAL-BUTT JOINT OR HOT-MIX ASPHALT SURFACE REMOVAL-BUTT JOINT

NOTE:

1. FOR ADDITIONAL INFORMATION ABOUT CURB AND GUTTER, MEDIAN AND SIDEWALK SEE STD. 424001, 606001, & 606301
2. UNLESS OTHERWISE SHOWN ALL RADII ARE 1'

CUMMINS ENGINEERING CORPORATION		JOB - 2200
FILE NAME =		FILE - sht-details4.dgn
USER NAME = laughlin1	DESIGNED - NAK	REVISED -
C:\Projects\d652204\cummins_final\d67289-sht-details4.dgn	DRAWN - AJH	REVISED -
PLOT SCALE = 40.0000' / IN.	CHECKED - NAK	REVISED -
PLOT DATE = Mar-18-2008 11:43:05AM	DATE - 3/15/2008	REVISED -

**STATE OF ILLINOIS
DEPARTMENT OF TRANSPORTATION**

CROSSWALK & ISLAND DETAILS

SCALE: SHEET NO. OF SHEETS STA. TO STA.

F.A.P. RTE.	SECTION	COUNTY	TOTAL SHEETS	SHEET NO.
662	2-2(RS) & 3-1, 2(RS-10, TS-5)	SANGAMON	181	121
CONTRACT NO. 72889				
FED. ROAD DIST. NO. ILLINOIS FED. AID PROJECT				