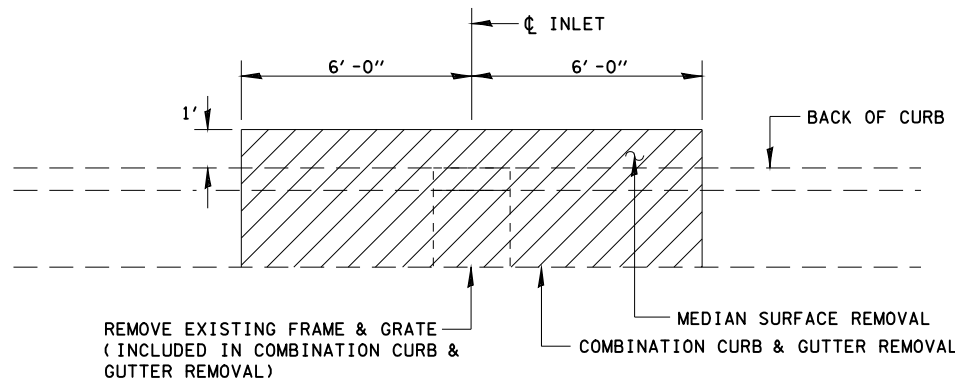
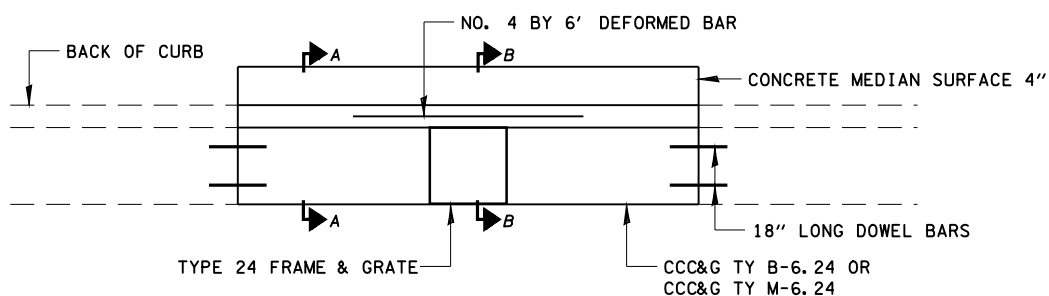


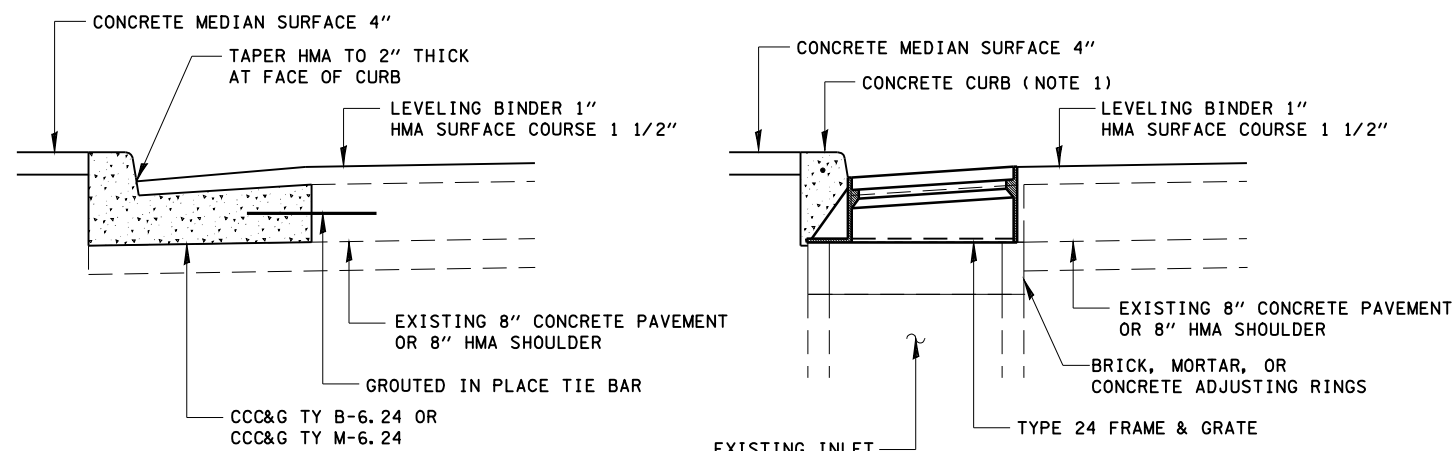
**INLETS TO BE ADJUSTED WITH NEW TYPE 24 FRAME & GRATE
EXISTING M-6.24 CURB AND GUTTER OR B-6.24 CURB AND GUTTER**



PLAN SHOWING REMOVAL



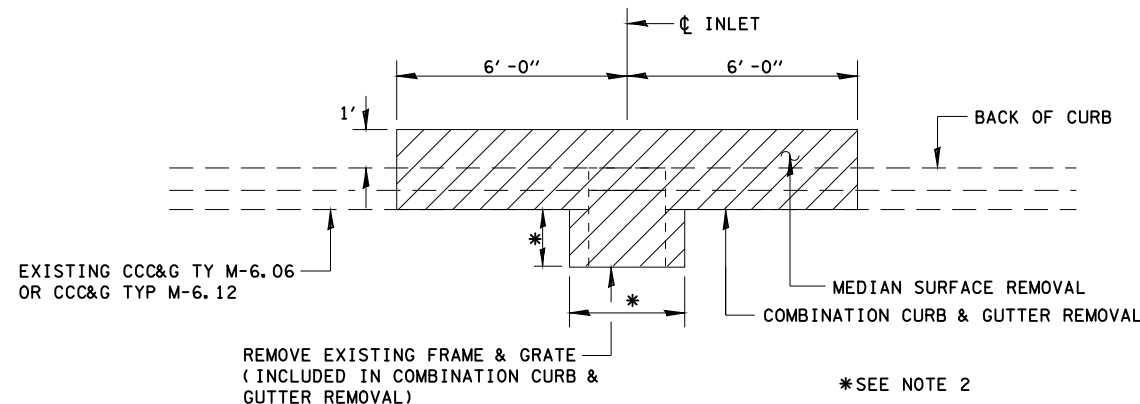
PLAN SHOWING PROPOSED



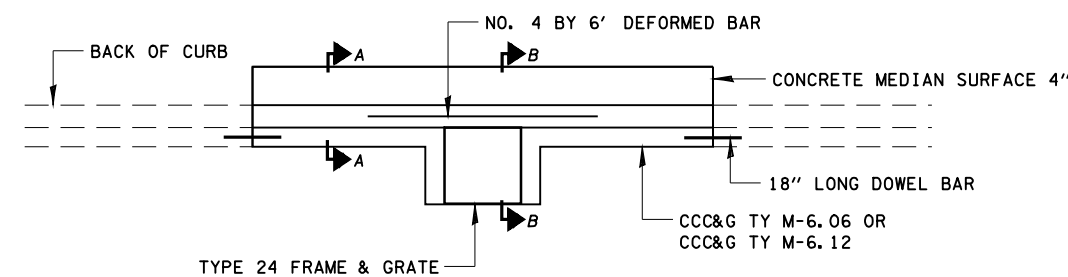
SECTION A-A

SECTION B-B

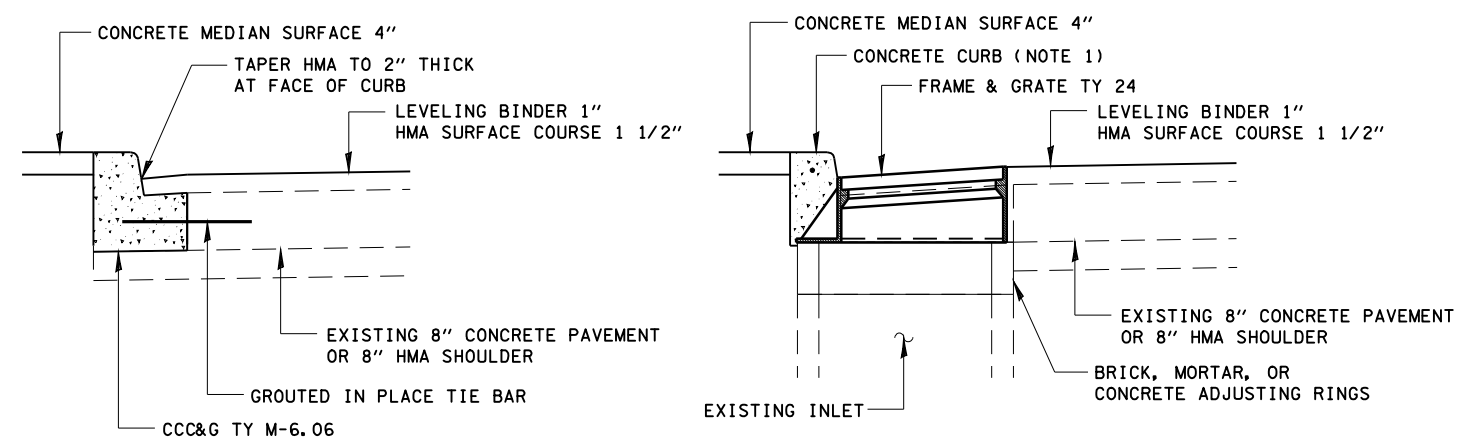
**INLETS TO BE ADJUSTED WITH NEW TYPE 24 FRAME & GRATE
EXISTING M-6.06 CURB AND GUTTER OR M-6.12 CURB AND GUTTER**



PLAN SHOWING REMOVAL



PLAN SHOWING PROPOSED



SECTION A-A

SECTION B-B

- NOTES:
1. THE HEIGHT OF THE PROPOSED CURB SHALL MATCH THE HEIGHT OF THE EXISTING CURB
2. REMOVE A MINIMUM OF 12" OF PAVEMENT OR SHOULDER FROM AROUND FRAME AND GRATE

CUMMINS ENGINEERING CORPORATION		JOB - 2200
FILE NAME =	USER NAME = laughlin1	FILE - sht-details2.dgn
C:\Projects\d652204\cummins_final\d67289-sht-details2.dgn	DESIGNED - NAK	REVISED -
	DRAWN - AJH	REVISED -
	CHECKED -	REVISED -
	DATE - 3/15/2008	REVISED -
PLOT SCALE = 40.0000' / IN.		
PLOT DATE = Mar-18-2008 11:43:09AM		

**STATE OF ILLINOIS
DEPARTMENT OF TRANSPORTATION**

INLETS TO BE ADJUSTED

SCALE: SHEET NO. OF SHEETS STA. TO STA.

F.A.P. RTE.	SECTION	COUNTY	TOTAL SHEETS	SHEET NO.
662	2-2(RS) & 3-1, 2(RS-10, TS-5)	SANGAMON	181	123
FED. ROAD DIST. NO. ILLINOIS FED. AID PROJECT			CONTRACT NO. 72889	