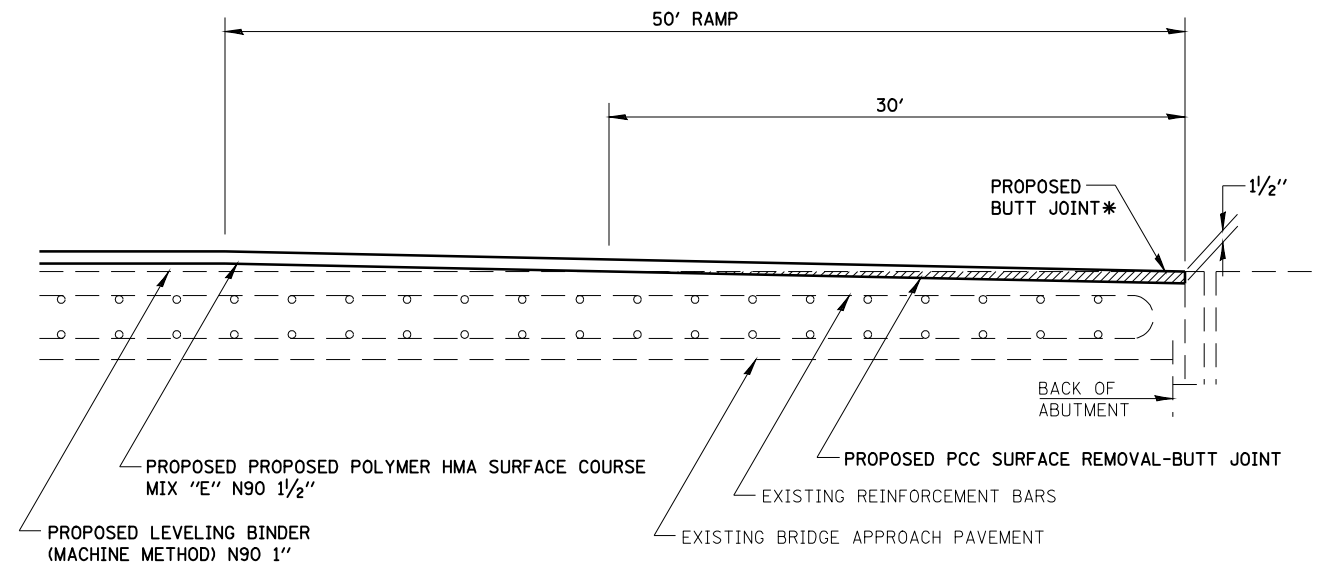
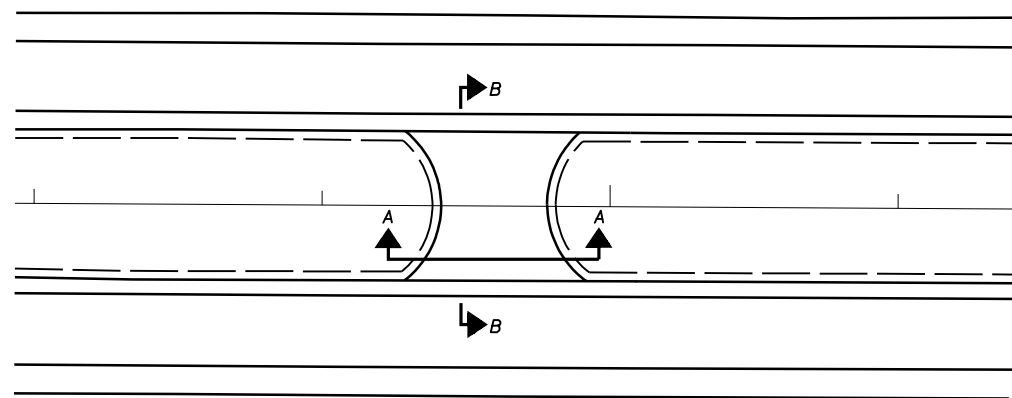


BUTT JOINT DETAIL

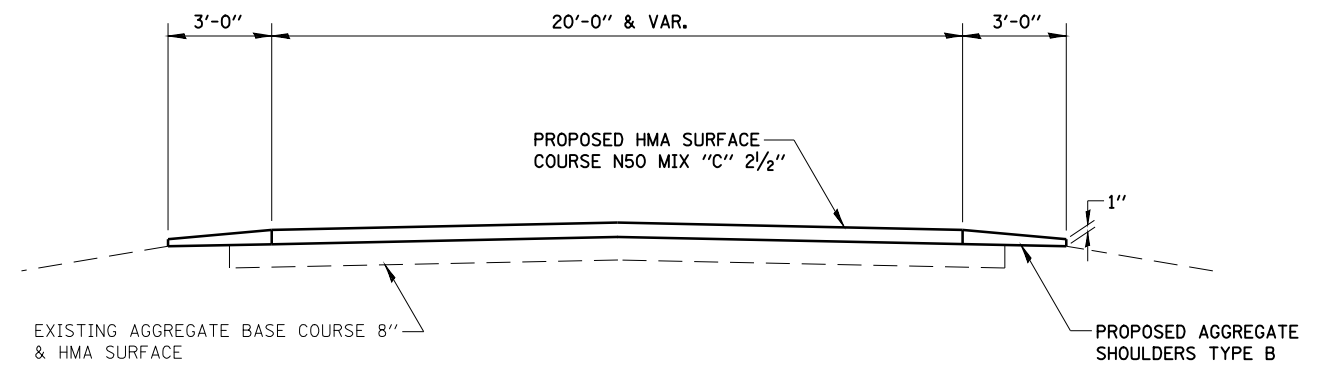


TYPICAL BUTT JOINT DETAIL AT BRIDGE

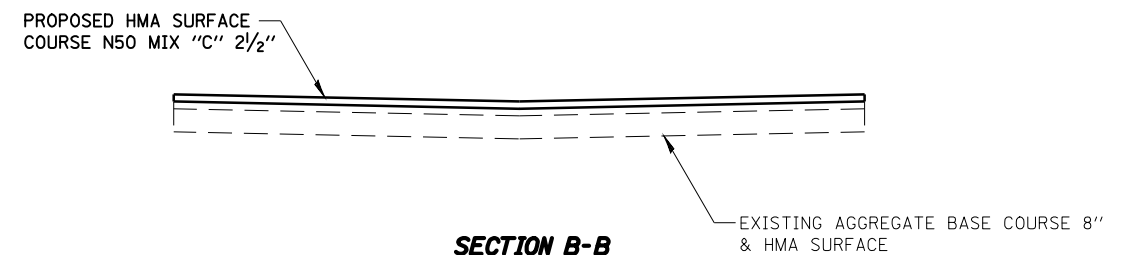
*EXACT LOCATION OF BUTT JOINTS SHALL BE DETERMINED BY THE ENGINEER. MILLING FOR BUTT JOINTS SHALL EXTEND FROM OUTSIDE OF PAVED SHOULDER TO OUTSIDE OF PAVED SHOULDER



DETAIL OF MEDIAN CROSSOVER AT ENTRANCES



SECTION A-A



SECTION B-B

CUMMINS ENGINEERING CORPORATION		JOB - 2200	
FILE NAME =	USER NAME = laughlinr1	FILE - sht-details3.dgn	
C:\Projects\d652204\cummins_final\d67289-sht-details3.dgn		DESIGNED - NAK	REVISED -
		DRAWN - AJH	REVISED -
		CHECKED - NAK	REVISED -
		DATE - 3/15/2008	REVISED -
	PLOT SCALE = 100.0000' / IN.		
	PLOT DATE = Mar-18-2008 11:43:11AM		

**STATE OF ILLINOIS
DEPARTMENT OF TRANSPORTATION**

**BUTT JOINT DETAILS
MEDIAN CROSSOVER DETAILS**

SCALE: SHEET NO. OF SHEETS STA. TO STA.

F.A.P. RTE.	SECTION	COUNTY	TOTAL SHEETS	SHEET NO.
662	2-2(RS) & 3-1, 2(RS-10, TS-5)	SANGAMON	181	124
CONTRACT NO. 72889				
FED. ROAD DIST. NO. ILLINOIS FED. AID PROJECT				