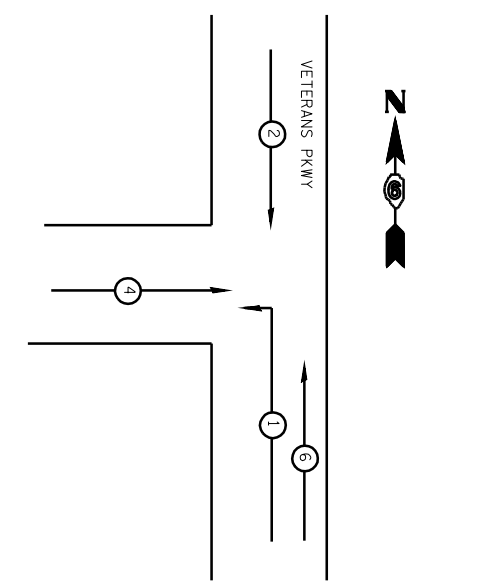
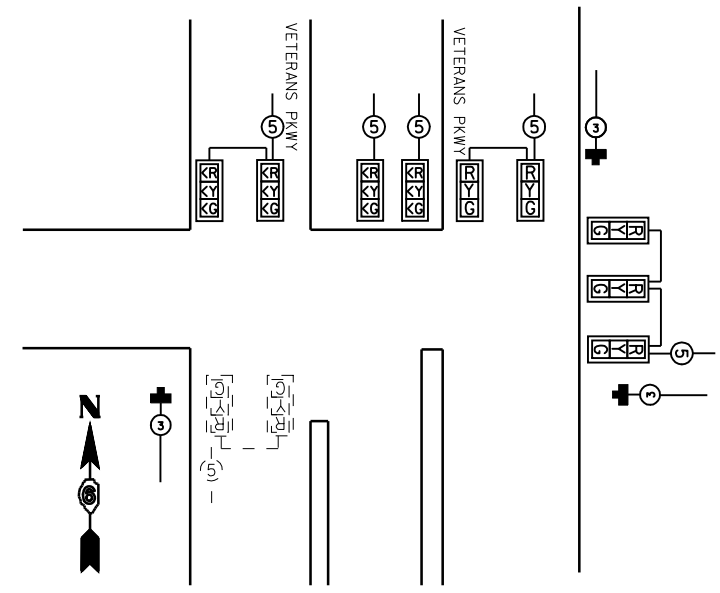
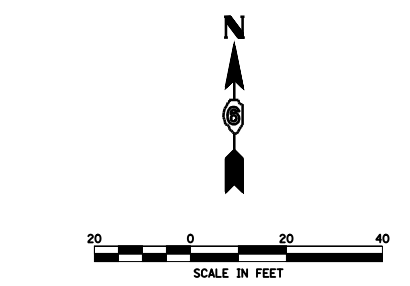


TEMPORARY SIGNAL NOTES

- 1.) EXISTING MAST ARM SHALL REMAIN IN PLACE DURING CONSTRUCTION AND SHALL BE UTILIZED AS PART OF THE TEMPORARY TRAFFIC SIGNAL INSTALLATION. MAST ARM SHALL BE REMOVED AFTER PROPOSED SIGNALS HAVE BEEN ACTIVATED. EXISTING CABLE TO MAST ARM MAY BE CONNECTED TO TEMPORARY SIGNAL CONTROLLER TO SUPPLY POWER DURING TEMPORARY OPERATION. CAMERA MOUNTING ASSEMBLY SHALL BE MOUNTED TO MAST ARM TO INSTALL VIDEO CAMERA. PROPOSED CAMERA CABLE SHALL BE INSTALLED THROUGH EXISTING CONDUIT TO TEMPORARY CONTROLLER. THIS WORK SHALL BE INCLUDED AS PART OF THE TEMPORARY TRAFFIC SIGNAL INSTALLATION PAY ITEM.
- 2.) POLES SHALL BE GUYED OR ANCHORED TO THE SATISFACTION OF THE ENGINEER. ANY ADJUSTMENTS SHALL BE CONSIDERED PART OF THE PAY ITEM FOR TEMPORARY TRAFFIC SIGNAL INSTALLATION.
- 3.) PROPOSED VIDEO DETECTION SYSTEM SHALL BE UTILIZED TO PROVIDE DETECTION FOR THE TEMPORARY CONTROLLER. THE CAMERAS AND CONTROL UNIT SHALL BE RELOCATED TO THE PERMANENT TRAFFIC SIGNAL INSTALLATION. ANY ADJUSTMENTS AND RELOCATION OF VIDEO COMPONENTS ARE TO BE INCLUDED IN THE TEMPORARY TRAFFIC SIGNAL INSTALLATION COST.
- 4.) POLES USED FOR TEMPORARY TRAFFIC SIGNAL INSTALLATION SHALL PROVIDE FOR A MINIMUM 35' MOUNTING HEIGHT FOR THE VIDEO CAMERAS.
- 5.) TEMPORARY SIGNALS SHALL BE OPERATIONAL PRIOR TO REMOVAL OF EXISTING TRAFFIC SIGNAL EQUIPMENT.



TEMPORARY PHASE DESIGNATION DIAGRAM



TEMPORARY CABLE DIAGRAM

FILE NAME =	USER NAME = laughlinr1	DESIGNED -	REVISED -
C:\Projects\d652204\cummins_final\d67289-shr-tsl.dgn		DRAWN -	REVISED -
PLOT SCALE = 40.0000' / IN.		CHECKED -	REVISED -
PLOT DATE = Mar-18-2008 11:44:48AM		DATE -	REVISED -

**STATE OF ILLINOIS
DEPARTMENT OF TRANSPORTATION**

SCALE: SHEET NO. OF SHEETS STA. TO STA.

F.A.P. RTE.	SECTION	COUNTY	TOTAL SHEETS	SHEET NO.
662	2-2(RS) & 3-1, 2(RS-10, TS-5)	SANGAMON	181	145
CONTRACT NO. 72889				
FED. ROAD DIST. NO. ILLINOIS FED. AID PROJECT				