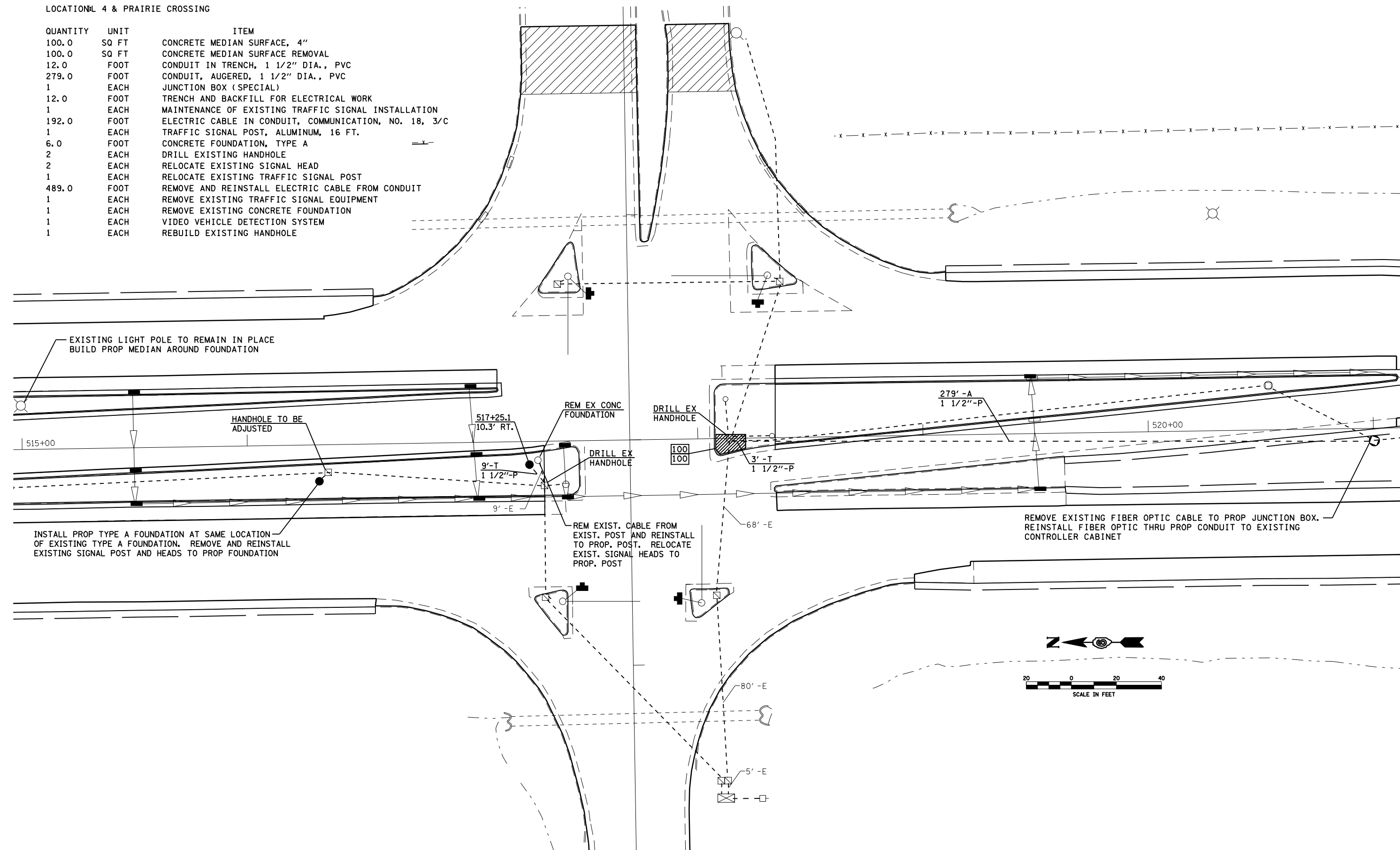


TRAFFIC SIGNAL QUANTITIES

LOCATION: L 4 & PRAIRIE CROSSING

QUANTITY	UNIT	ITEM
100.0	SQ FT	CONCRETE MEDIAN SURFACE, 4"
100.0	SQ FT	CONCRETE MEDIAN SURFACE REMOVAL
12.0	FOOT	CONDUIT IN TRENCH, 1 1/2" DIA., PVC
279.0	FOOT	CONDUIT, AUGERED, 1 1/2" DIA., PVC
1	EACH	JUNCTION BOX (SPECIAL)
12.0	FOOT	TRENCH AND BACKFILL FOR ELECTRICAL WORK
1	EACH	MAINTENANCE OF EXISTING TRAFFIC SIGNAL INSTALLATION
192.0	FOOT	ELECTRIC CABLE IN CONDUIT, COMMUNICATION, NO. 18, 3/C
1	EACH	TRAFFIC SIGNAL POST, ALUMINUM, 16 FT.
6.0	FOOT	CONCRETE FOUNDATION, TYPE A
2	EACH	DRILL EXISTING HANDHOLE
2	EACH	RELOCATE EXISTING SIGNAL HEAD
1	EACH	RELOCATE EXISTING TRAFFIC SIGNAL POST
489.0	FOOT	REMOVE AND REINSTALL ELECTRIC CABLE FROM CONDUIT
1	EACH	REMOVE EXISTING TRAFFIC SIGNAL EQUIPMENT
1	EACH	REMOVE EXISTING CONCRETE FOUNDATION
1	EACH	VIDEO VEHICLE DETECTION SYSTEM
1	EACH	REBUILD EXISTING HANDHOLE



EXISTING LIGHT POLE TO REMAIN IN PLACE  
BUILD PROP MEDIAN AROUND FOUNDATION

HANDHOLE TO BE  
ADJUSTED

REM EX CONC  
FOUNDATION

DRILL EX  
HANDHOLE

279' -A  
1 1/2"-P

520+00

517+25.1  
10.3' RT.

DRILL EX  
HANDHOLE

100  
100

3' -T  
1 1/2"-P

INSTALL PROP TYPE A FOUNDATION AT SAME LOCATION  
OF EXISTING TYPE A FOUNDATION. REMOVE AND REINSTALL  
EXISTING SIGNAL POST AND HEADS TO PROP FOUNDATION

REM EXIST. CABLE FROM  
EXIST. POST AND REINSTALL  
TO PROP. POST. RELOCATE  
EXIST. SIGNAL HEADS TO  
PROP. POST

REMOVE EXISTING FIBER OPTIC CABLE TO PROP JUNCTION BOX.  
REINSTALL FIBER OPTIC THRU PROP CONDUIT TO EXISTING  
CONTROLLER CABINET



FILE NAME =	USER NAME = laughlinr1	DESIGNED -	REVISED -	<b>STATE OF ILLINOIS DEPARTMENT OF TRANSPORTATION</b>	F.A.P. RTE.	SECTION	COUNTY	TOTAL SHEETS	SHEET NO.
C:\Projects\652204\cummins_final\67289-shr-tsl.dgn		DRAWN -	REVISED -		662	2-2(RS) & 3-1, 2(RS-10, TS-5)	SANGAMON	181	151
PLOT SCALE = 40.0000' / IN.		CHECKED -	REVISED -		CONTRACT NO. 72889				
PLOT DATE = Mar-18-2008 11:45:37AM		DATE -	REVISED -		FED. ROAD DIST. NO.	ILLINOIS	FED. AID PROJECT		
					SCALE:	SHEET NO.	OF SHEETS	STA.	TO STA.