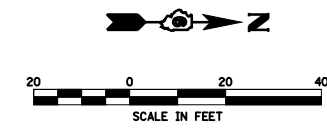
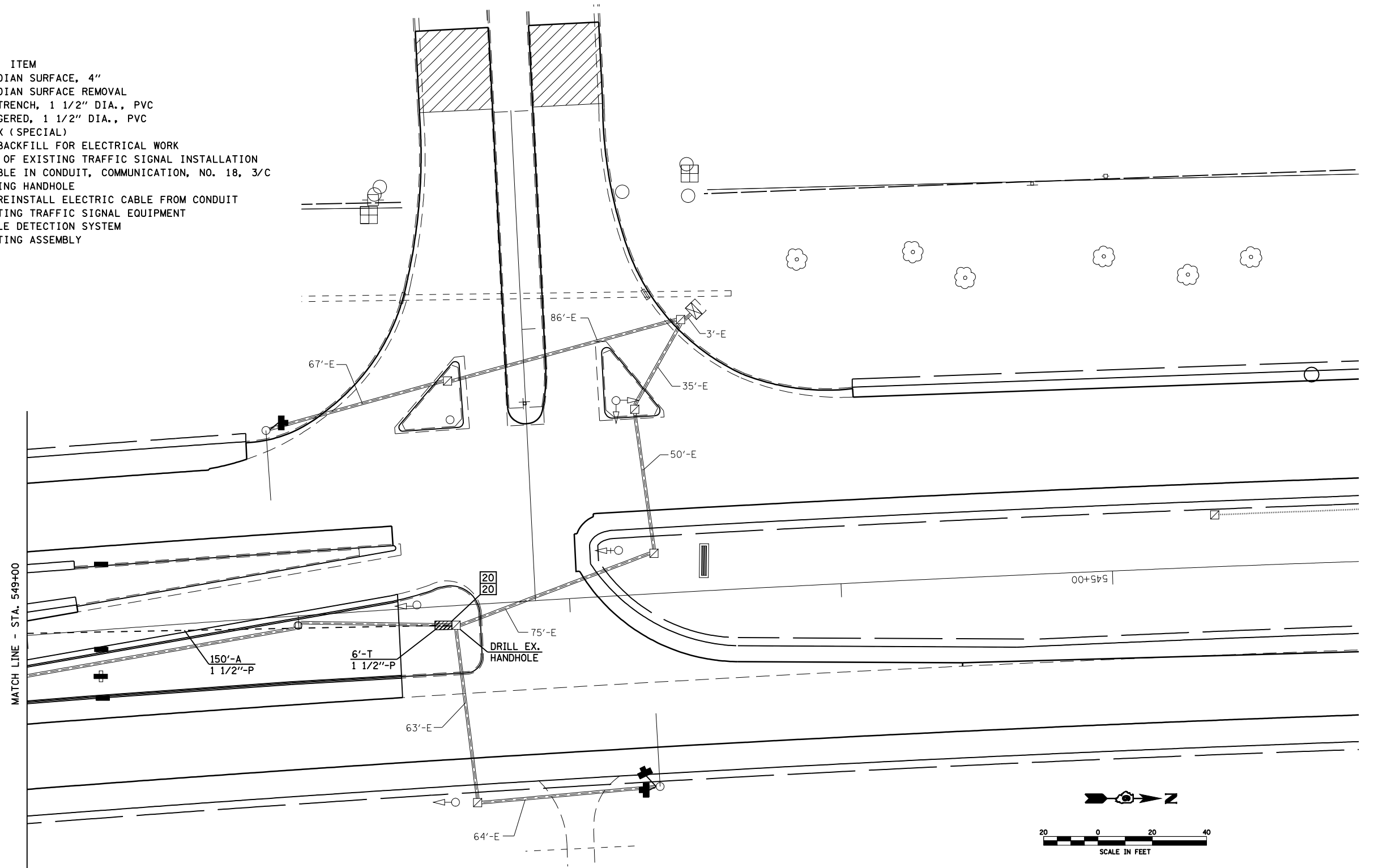


TRAFFIC SIGNAL QUANTITIES

LOCATION: IL 4 & PANTHER CREEK

QUANTITY	UNIT	ITEM
20.0	SQ FT	CONCRETE MEDIAN SURFACE, 4"
20.0	SQ FT	CONCRETE MEDIAN SURFACE REMOVAL
197.0	FOOT	CONDUIT IN TRENCH, 1 1/2" DIA., PVC
243.0	FOOT	CONDUIT, AUGERED, 1 1/2" DIA., PVC
1	EACH	JUNCTION BOX (SPECIAL)
197.0	FOOT	TRENCH AND BACKFILL FOR ELECTRICAL WORK
1	EACH	MAINTENANCE OF EXISTING TRAFFIC SIGNAL INSTALLATION
986.5	FOOT	ELECTRIC CABLE IN CONDUIT, COMMUNICATION, NO. 18, 3/C
2	EACH	DRILL EXISTING HANDHOLE
633.5	FOOT	REMOVE AND REINSTALL ELECTRIC CABLE FROM CONDUIT
1	EACH	REMOVE EXISTING TRAFFIC SIGNAL EQUIPMENT
1	EACH	VIDEO VEHICLE DETECTION SYSTEM
2	EACH	CAMERA MOUNTING ASSEMBLY



FILE NAME = C:\Projects\d652204\cummins_final\d67289-sh-t-tsl.dgn	USER NAME = laughlinr1	DESIGNED -	REVISED -	STATE OF ILLINOIS DEPARTMENT OF TRANSPORTATION	F.A.P. RTE. = 662	SECTION = 2-2(RS) & 3-1, 2(RS-10, TS-5)	COUNTY = SANGAMON	TOTAL SHEETS = 181	SHEET NO. = 153	
PLOT SCALE = 40.0000' / IN.	CHECKED -	REVISED -	SCALE: _____		SHEET NO. _____	OF SHEETS _____	STA. _____	TO STA. _____	CONTRACT NO. 72889	
PLOT DATE = Mar-18-2008 11:45:51AM	DATE -	REVISED -	FED. ROAD DIST. NO. _____ ILLINOIS FED. AID PROJECT _____							