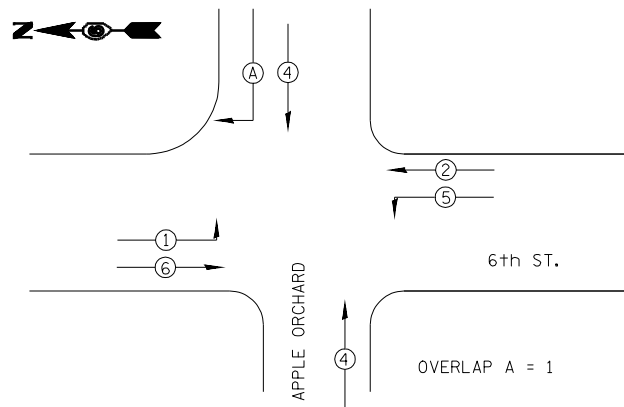
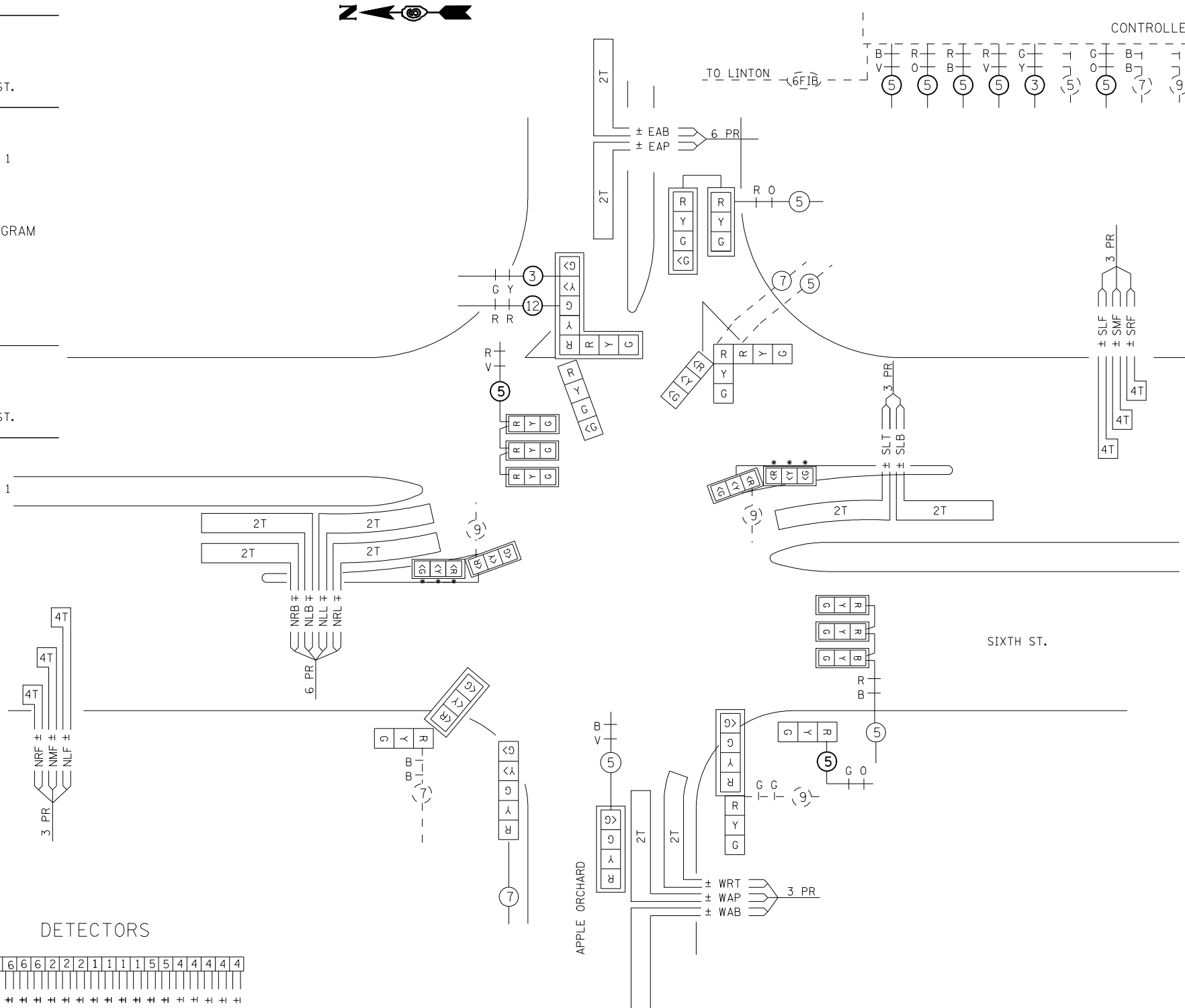
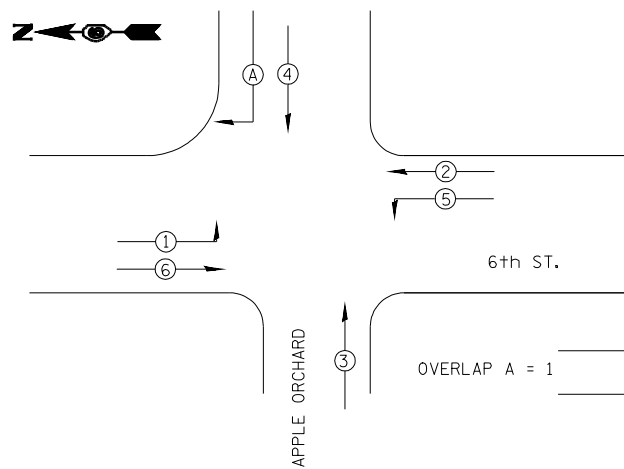


EXISTING PHASE DESIGNATION DIAGRAM



PROPOSED PHASE DESIGNATION DIAGRAM



CONTROLLER

REMOVE EXISTING TRAFFIC SIGNAL EQUIPMENT CONSISTS OF:

- 12 EACH SIGNAL HEAD ASSEMBLY
- 2 EACH TRAFFIC SIGNAL MAST ARM
- 6 EACH TRAFFIC SIGNAL POST

ALL REMOVAL ITEMS SHALL BE DELIVERED TO CITY, WATER, LIGHT AND POWER SPRINGFIELD, IL

• GEOM. PROG. LOUVER

NOTES:

- 1.) CONTRACTOR SHALL PROVIDE UPDATED CABINET WIRING DIAGRAMS TO REFLECT PROPOSED PHASE CHANGES IN ACCORDANCE WITH THE PROPOSED PHASE DESIGNATION DIAGRAM. PAID FOR AS MODIFY EXISTING CONTROLLER.
- 2.) EXISTING WIRING TAKEN FROM HISTORICAL DATA. CONTRACTOR SHALL FIELD VERIFY SIGNAL HEAD WIRING.

DETECTORS

PHASE	6	6	6	2	2	2	1	1	1	1	5	5	4	4	4	4
	NRF	NRF	NRF	SLF	SLF	SLF	NRL	NRL	NRL	NRL	SLT	SLT	SLB	SLB	EAP	EAP
	±	±	±	±	±	±	±	±	±	±	±	±	±	±	±	±
	3 PR	3 PR	3 PR	3 PR	3 PR	3 PR	3 PR	3 PR	3 PR	3 PR	6 PR	6 PR	3 PR	3 PR	3 PR	3 PR

FILE NAME =	USER NAME = laughlinr1	DESIGNED -	REVISED -
C:\Projects\d652204\cummins_final\d67289-9-sht-ts2.dgn		DRAWN -	REVISED -
PLOT SCALE = 40.0000' / IN.		CHECKED -	REVISED -
PLOT DATE = Mar-18-2008 11:46:18AM		DATE -	REVISED -

STATE OF ILLINOIS  
DEPARTMENT OF TRANSPORTATION

PROPOSED WIRING DIAGRAM  
6TH & APPLE ORCHARD

SCALE: SHEET NO. OF SHEETS STA. TO STA.

F.A.P. RTE.	SECTION	COUNTY	TOTAL SHEETS	SHEET NO.
662	2-2(RS) & 3-1, 2(RS-10, TS-5)	SANGAMON	181	158
CONTRACT NO. 72889				
FED. ROAD DIST. NO.		ILLINOIS FED. AID PROJECT		