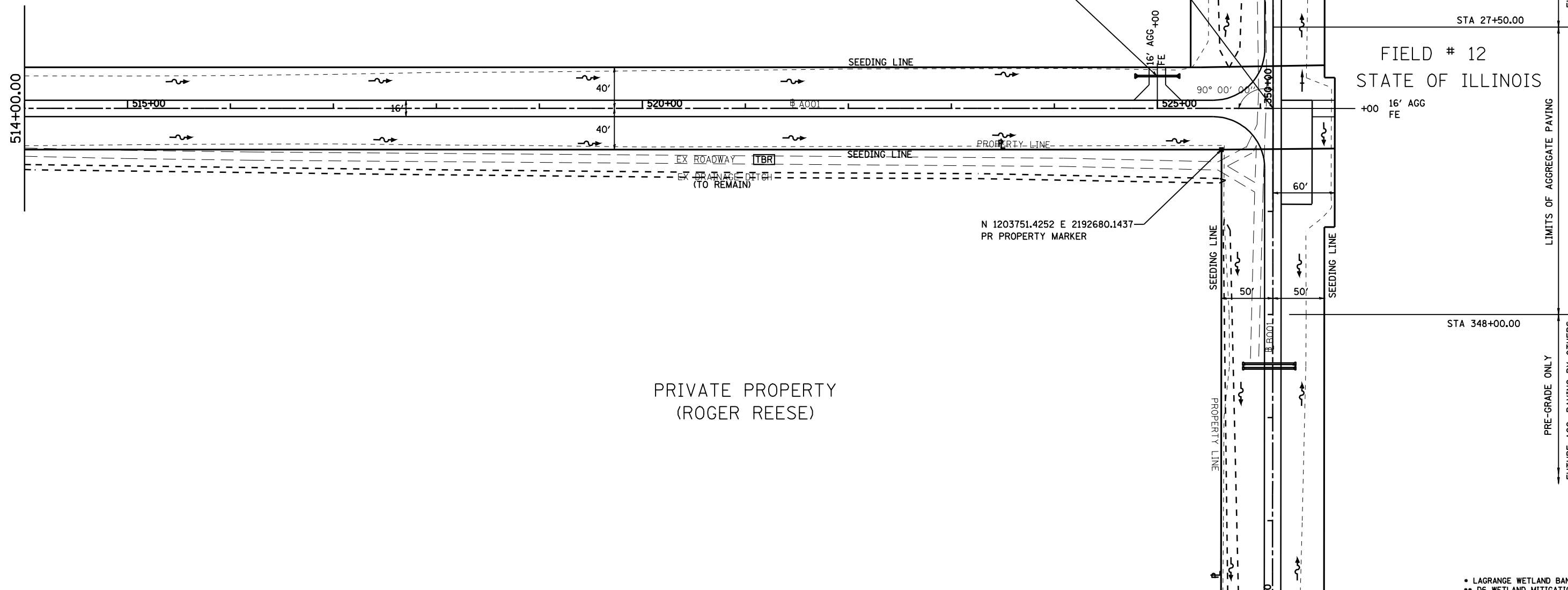


FIELD # 11
STATE OF ILLINOIS

STA 26+70.15 - A001a (AH) =
STA 350+00.00 - B001 (BK) =
STA 526+12.36 - A001 (BK)

LT STA 525+00.00
PR PIPE CULV 15" x 38.0'
CS/A TYPE 1
+81.0, 30.4' LT USFL = 433.10
+19.0, 30.4' LT DSFL = 433.06
2-METAL END SECTIONS, 15" (STD 542401)



• LAGRANGE WETLAND BANK
•• D6 WETLAND MITIGATION 3

FILE NAME =	USER NAME = laughlinr1	DESIGNED -	REVISED -
C:\Projects\d650305\contract 03\sht.plt	file001.a001a.dgn	DRAWN - KPG	REVISED -
	PLOT SCALE = 100.0000' / IN.	CHECKED - JCN	REVISED -
	PLOT DATE = Mar-17-2008 12:03:42PM	DATE -	REVISED -

STATE OF ILLINOIS
DEPARTMENT OF TRANSPORTATION

PLAN SHEET - A001

SCALE: SHEET NO. OF SHEETS STA. TO STA.

F.A. RTE.	SECTION	COUNTY	TOTAL SHEETS	SHEET NO.
•	••	BROWN	174	16
CONTRACT NO. 72968				
FED. ROAD DIST. NO. ILLINOIS FED. AID PROJECT				