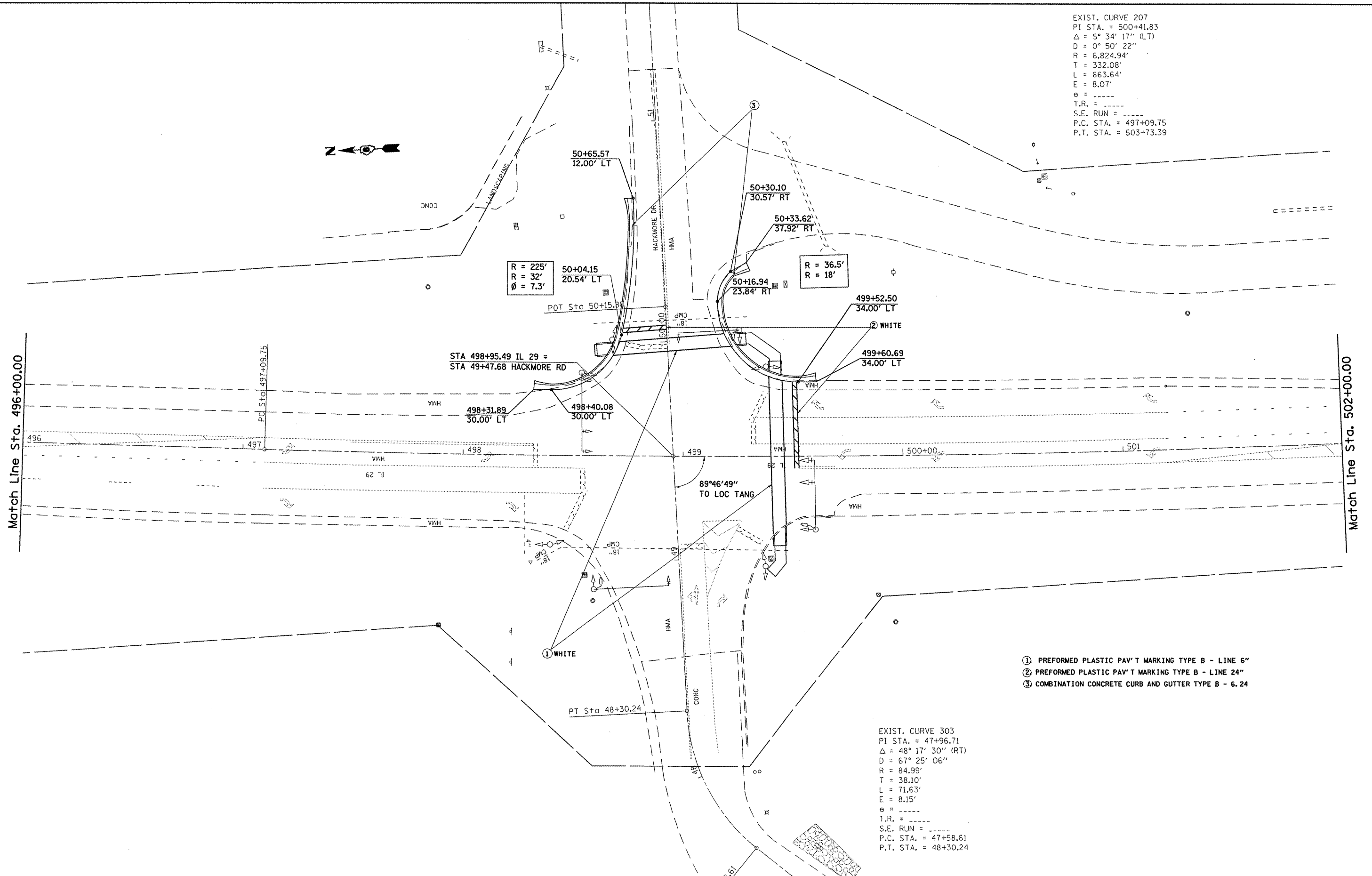


EXIST. CURVE 207  
 PI STA. = 500+41.83  
 $\Delta = 5^\circ 34' 17''$  (LT)  
 $D = 0^\circ 50' 22''$   
 $R = 6,824.94'$   
 $T = 332.08'$   
 $L = 663.64'$   
 $E = 8.07'$   
 $e = \text{-----}$   
 T.R. = -----  
 S.E. RUN = -----  
 P.C. STA. = 497+09.75  
 P.T. STA. = 503+73.39



R = 225'  
 R = 32'  
 $\phi = 7.3'$

R = 36.5'  
 R = 18'

- ① PREFORMED PLASTIC PAV'T MARKING TYPE B - LINE 6"
- ② PREFORMED PLASTIC PAV'T MARKING TYPE B - LINE 24"
- ③ COMBINATION CONCRETE CURB AND GUTTER TYPE B - 6.24

EXIST. CURVE 303  
 PI STA. = 47+96.71  
 $\Delta = 48^\circ 17' 30''$  (RT)  
 $D = 67^\circ 25' 06''$   
 $R = 84.99'$   
 $T = 38.10'$   
 $L = 71.63'$   
 $E = 8.15'$   
 $e = \text{-----}$   
 T.R. = -----  
 S.E. RUN = -----  
 P.C. STA. = 47+58.61  
 P.T. STA. = 48+30.24

FILE NAME = C:\Projects\4603988\ahp\in-20.dgn	USER NAME = laughlinr1	DESIGNED -	REVISED -
		DRAWN -	REVISED -
		CHECKED -	REVISED -
		DATE -	REVISED -
PLOT SCALE = 40.0000' / IN.			
PLOT DATE = Apr-01-2008 07:08:19AM			

**STATE OF ILLINOIS  
 DEPARTMENT OF TRANSPORTATION**

<b>INTERSECTION IMPROVEMENTS</b>			
SCALE:	SHEET NO.	OF SHEETS	STA. TO STA.

F.A.P. RTE.	SECTION	COUNTY	TOTAL SHEETS	SHEET NO.
658	102N	SANGAMON	7	4
CONTRACT NO. 72B77				
FED. ROAD DIST. NO. ILLINOIS FED. AID PROJECT				