

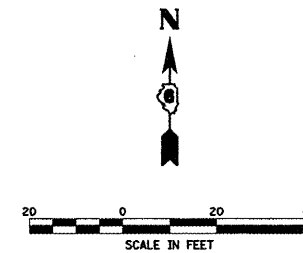
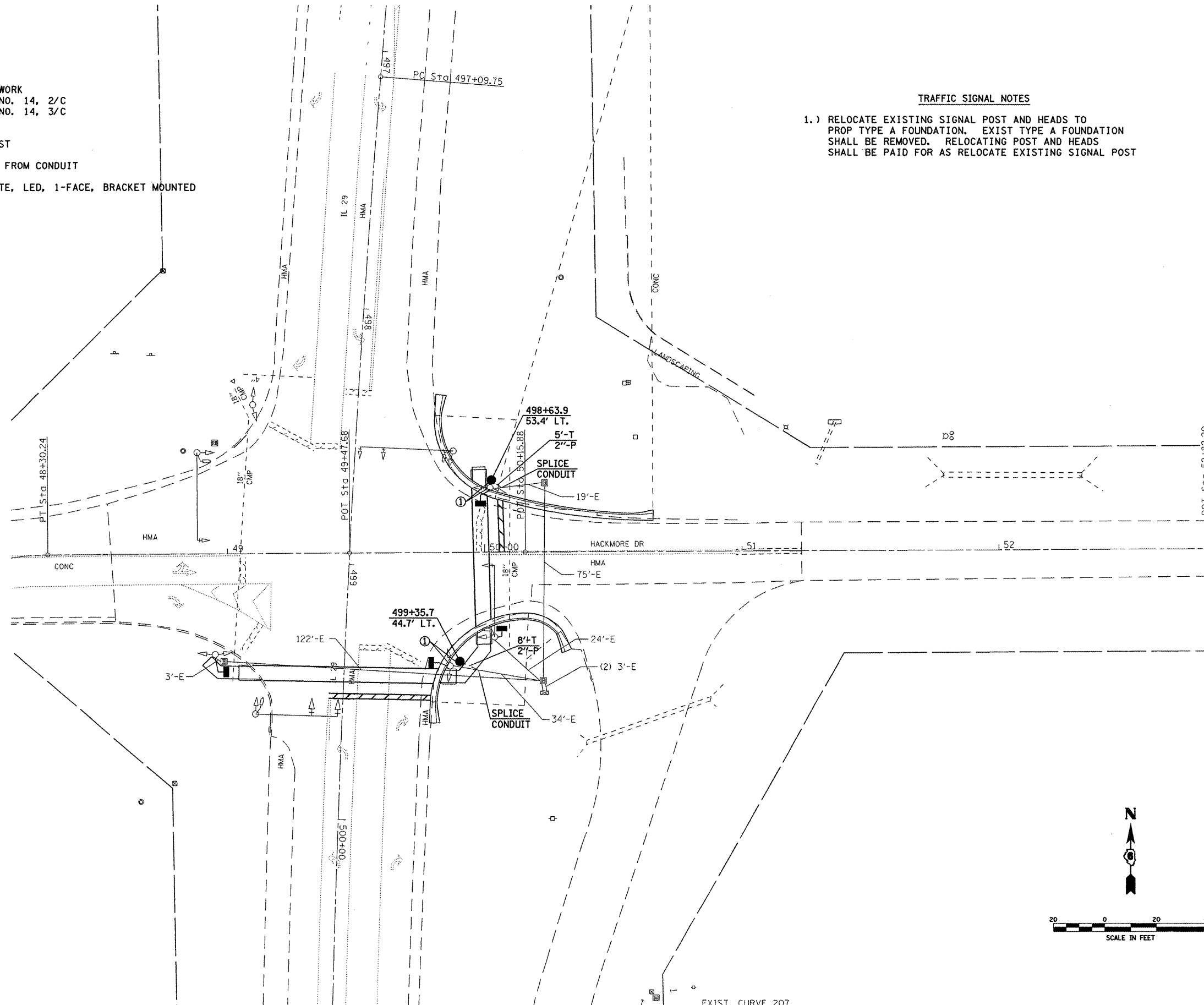
TRAFFIC SIGNAL QUANTITIES

LOCATION: IL 29 & HACKMORE

QUANTITY	UNIT	ITEM
13.0	FOOT	CONDUIT IN TRENCH, 2" DIA., PVC
13.0	FOOT	TRENCH AND BACKFILL FOR ELECTRICAL WORK
402.0	FOOT	ELECTRIC CABLE IN CONDUIT, SIGNAL, NO. 14, 2/C
430.0	FOOT	ELECTRIC CABLE IN CONDUIT, SIGNAL, NO. 14, 3/C
6.0	FOOT	CONCRETE FOUNDATION, TYPE A
4	EACH	PEDESTRIAN PUSHBUTTON
2	EACH	RELOCATE EXISTING TRAFFIC SIGNAL POST
1	EACH	MODIFY EXISTING CONTROLLER
45.0	FOOT	REMOVE AND REINSTALL ELECTRIC CABLE FROM CONDUIT
2	EACH	REMOVE EXISTING CONCRETE FOUNDATION
4	EACH	PEDESTRIAN SIGNAL HEAD, POLYCARBONATE, LED, 1-FACE, BRACKET MOUNTED

TRAFFIC SIGNAL NOTES

- 1.) RELOCATE EXISTING SIGNAL POST AND HEADS TO PROP TYPE A FOUNDATION. EXIST TYPE A FOUNDATION SHALL BE REMOVED. RELOCATING POST AND HEADS SHALL BE PAID FOR AS RELOCATE EXISTING SIGNAL POST



FILE NAME = C:\Projects\4603988\ts.sheets.dgn	USER NAME = laughlinr1	DESIGNED -	REVISED -	<b>STATE OF ILLINOIS DEPARTMENT OF TRANSPORTATION</b>	<b>TRAFFIC SIGNAL LAYOUT</b>	F.A.P. RTE. 658	SECTION 102N	COUNTY SANGAMON	TOTAL SHEETS 7	SHEET NO. 6	
PLOT SCALE = 40,0000' / IN.	CHECKED -	REVISED -	SCALE:			SHEET NO. 5 OF SHEETS	STA.	TO STA.	CONTRACT NO. 72877		
PLOT DATE = Apr-01-2006 07:08:23AM	DATE -	REVISED -	FED. ROAD DIST. NO. ILLINOIS FED. AID PROJECT								