

STATE OF ILLINOIS
 DEPARTMENT OF TRANSPORTATION
 DIVISION OF HIGHWAYS

PROPOSED
 HIGHWAY PLANS

FAI 55 (I-55)
 SECTION D-6 CABLE MEDIAN BAR #3
 SANGAMON COUNTY
 PROJECT: *ACHSIP-055-3(140)085*
 C-96-053-08

F.A.I. RTE.	SECTION	COUNTY	TOTAL SHEETS	SHEET NO.
55		SANGAMON	14	3
FED. ROAD DIST. NO.	ILLINOIS	CONTRACT NO. 72B85		

D-6 CABLE MEDIAN BAR #3

14+4=18

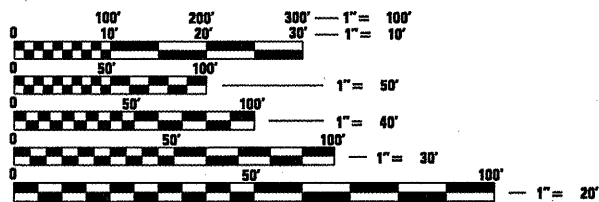
D-96-053-08

INDEX OF SHEETS

- 1 COVER SHEET
- 2 GENERAL NOTES
- 3 SUMMARY OF QUANTITIES
- 4 TYPICAL SECTIONS
- 5 SCHEDULES OF QUANTITIES
- 6-11 PLAN SHEETS
- 12-14 HIGH TENSION CABLE DETAIL

HIGHWAY STANDARDS

- 000001-05
- 701101-01
- 701106-01
- 701400-02
- 701406-04
- 701901

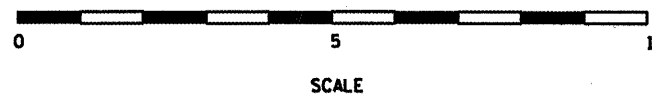
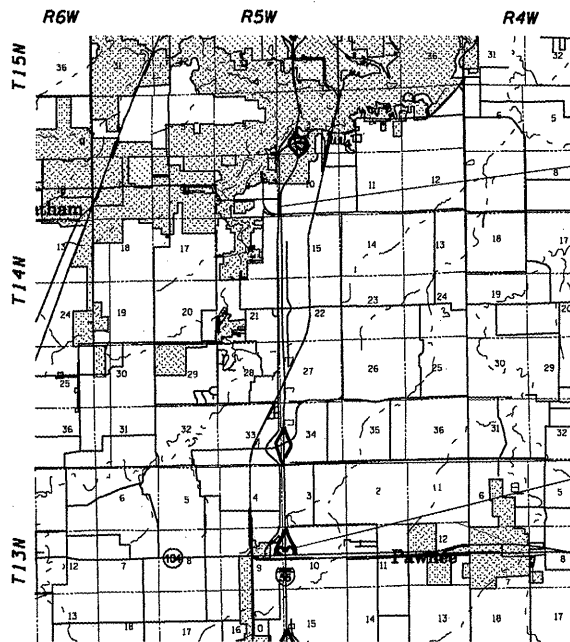


FULL SIZE PLANS HAVE BEEN PREPARED USING STANDARD ENGINEERING SCALES. REDUCED SIZED PLANS WILL NOT CONFORM TO STANDARD SCALES. IN MAKING MEASUREMENTS ON REDUCED PLANS, THE ABOVE SCALES MAY BE USED.

J.U.L.I.E.
 JOINT UTILITY LOCATION INFORMATION FOR EXCAVATION
 1-800-892-0123
 OR 811

PROJECT ENGINEER: SAL MADONIA (217) 782-4761
 SQUAD LEADER: BRIAN LANINGHAM (217) 524-0472

CONTRACT NO. 72B85



PROJECT BEGINS
 STA 222+91.13

PROJECT ENDS
 STA 511+68.87

GROSS LENGTH OF PROJECT = 28,877.74 FEET = 5.47 MILES
 NET LENGTH OF PROJECT = 28,877.74 FEET = 5.47 MILES



LOCATION OF SECTION INDICATED THUS: - [rectangle]

ADT - 30,500 (2006)

STATE OF ILLINOIS
 DEPARTMENT OF TRANSPORTATION
 DIVISION OF HIGHWAYS

SUBMITTED *Mar 6, 2008*
CO. J. M. Roadman
 DEPUTY DIRECTOR OF HIGHWAYS, REGION ENGINEER

May 9, 2008
Eric E. Harman
 INTERIM ENGINEER OF DESIGN AND ENVIRONMENT

May 9, 2008
Christine M. Reed
 DIRECTOR OF HIGHWAYS, CHIEF ENGINEER

PRINTED BY THE AUTHORITY
 OF THE STATE OF ILLINOIS

GENERAL NOTES

1. THE CONTRACTOR SHALL BE RESPONSIBLE FOR PROTECTING UTILITY PROPERTY FROM CONSTRUCTION OPERATIONS AS OUTLINED IN ARTICLE 107.31 OF THE STANDARD SPECIFICATIONS. THE JULIE NUMBER IS 800-892-0123. A MINIMUM OF FORTY-EIGHT HOURS ADVANCE NOTICE IS REQUIRED. ANY DAMAGE TO THE UNDERGROUND FACILITIES, CAUSED BY THE CONTRACTOR SHALL BE REPAIRED TO THE SATISFACTION OF THE DEPARTMENT AT THE CONTRACTOR'S EXPENSE, INCLUDING TEMPORARY REPAIRS WHICH MAY BE REQUIRED TO KEEP THE FACILITY OPERATIONAL WHILE MATERIAL IS BEING OBTAINED TO MAKE PERMANENT REPAIRS.
2. THE LOCATIONS OF THOSE BURIED AND ABOVEGROUND UTILITIES SHOWN ARE APPROXIMATE, ARE SHOWN FOR CONTRACTOR INFORMATIONAL USE ONLY, AND ARE NOT TO BE REFERENCED FOR CONSTRUCTIONS PURPOSES. THE IMPLIED PRESENCE OR ABSENCE OF UTILITIES IS NOT TO BE CONSTRUED BY THE OWNER, ENGINEER, CONTRACTOR, OR SUBCONTRACTORS TO BE AN ACCURATE AND COMPLETE REPRESENTATION OF UTILITIES THAT MAY OR MAY NOT EXIST ON THE CONSTRUCTION SITE. BURIED AND ABOVEGROUND UTILITY LOCATION, IDENTIFICATION, AND MARKING ARE THE SOLE RESPONSIBILITY OF THE CONTRACTOR. REROUTING, DISCONNECTION, PROTECTION, ETC. OF ANY UTILITIES MUST BE COORDINATED BETWEEN THE CONTRACTOR, UTILITY COMPANY, AND OWNER. SITE SAFETY, INCLUDING THE AVOIDANCE OF HAZARDS ASSOCIATED WITH BURIED AND ABOVEGROUND UTILITIES, REMAINS THE SOLE RESPONSIBILITY OF THE CONTRACTOR.
3. FOR STABILIZATION, ALL TYPE III BARRICADES SHALL REQUIRE A MINIMUM OF FOUR SANDBAGS PER BARRICADE.
4. WHERE SECTION OR SUBSECTION MONUMENTS ARE ENCOUNTERED, THE ENGINEER SHALL BE NOTIFIED BEFORE SUCH MONUMENTS ARE REMOVED. THE CONTRACTOR SHALL PROTECT AND CAREFULLY PRESERVE ALL MONUMENTS UNTIL AN AUTHORIZED SURVEYOR OR AGENT HAS WITNESSED OR OTHERWISE REFERENCED THEIR LOCATION. THE CONTRACTOR SHALL BE RESPONSIBLE FOR HAVING AN AUTHORIZED SURVEYOR RE-ESTABLISH ANY SECTION OR SUBSECTION MONUMENTS DESTROYED BY HIS OPERATIONS.
5. ANY REFERENCE TO A STANDARD IN THESE PLANS SHALL BE INTERPRETED TO MEAN THE EDITION AS INDICATED BY THE SUBNUMBER LISTED ON THE INDEX OF SHEETS OR THE COPY OF THE STANDARD INCLUDED IN THESE PLANS.
6. UNLESS NOTED OTHERWISE, STATIONS AND OFFSETS REFER TO CENTERLINE OF PROJECT.
7. IN ADDITION TO FIELD SURVEYS AND AERIAL SURVEYS, PLAN DIMENSIONS AND DETAILS RELATIVE TO THE EXISTING FACILITIES HAVE BEEN TAKEN FROM EXISTING PLANS AND ARE SUBJECT TO CONSTRUCTION VARIATIONS. IT SHALL BE THE CONTRACTOR'S RESPONSIBILITY TO VERIFY SUCH DIMENSIONS AND DETAILS IN THE FIELD. SUCH VARIATIONS SHALL NOT BE A CAUSE FOR ADDITIONAL COMPENSATION DUE TO A CHANGE IN THE SCOPE OF THE WORK. HOWEVER, THE CONTRACTOR WILL BE PAID FOR THE QUANTITY ACTUALLY FURNISHED AT THE UNIT PRICE BID FOR THE WORK.
8. THE CONTRACTOR SHALL EXERCISE CAUTION WHEN DRIVING THE CABLE POSTS SO AS NOT TO DAMAGE OR DISTORT THE DRIVEN END. IF THE BOX SHAPED SECTION IS USED A METAL STRAP SHALL BE WELDED ACROSS THE OPENING OF THE DRIVEN END TO ENHANCE STRENGTH. ALL CABLE POSTS THAT ENCOUNTER HIGH DRIVING FORCES SHALL BE PULLED AND EXAMINED FOR END DISTORTION AT THE DISCRETION OF THE ENGINEER. ALL DAMAGED POSTS SHALL BE REPLACED WITH NEW POSTS. ALL UNDAMAGED POSTS MAY BE REUSED. HAMMER ENERGY SHALL BE REGULATED DURING THE DRIVING TO ENSURE THAT FUTURE MAINTENANCE ACTIVITIES CAN BE CARRIED OUT WITH MINIMAL DISRUPTION TO TRAFFIC.

COMMITMENTS:

THERE ARE NO COMMITMENTS ON THIS PROJECT.

MIX REQUIREMENTS TABLE	
The following mixture requirements are applicable for this project.	
MIXTURE USE (S):	HMA Shoulders 4"
AC/PG:	PG 58-22
RAP%: (MAX)	
DESIGN AIR VOIDS:	2.0% @ N Design = 30
MIXTURE COMPOSITION: (GRADATION MIXTURE)	BAM
FRICITION AGGREGATE:	HMA Shoulders 4"

DISTRICT SIX	
EXAMINED	<u>Feb 25</u> 20 <u>08</u> <i>Scott Hoar</i>
OPERATIONS ENGINEER	
EXAMINED	<u>2-25-</u> 20 <u>08</u> <i>W.R. Frey</i>
PROGRAM IMPLEMENTATION ENGINEER	
EXAMINED	<u>MAR. 6</u> 20 <u>08</u> <i>W.R. Frey</i>
PROGRAM DEVELOPMENT ENGINEER	

* - D-6 CABLE MEDIAN BAR #3

FILE NAME =	USER NAME = lerninghambk	DESIGNED - BKL	REVISED - ---
c:\projects\d672b85\d672b85-shr-gennote.dgn		DRAWN - BKL	REVISED - ---
PLOT SCALE = 100.0000' / IN.	CHECKED - JPM	REVISED - ---	REVISED - ---
PLOT DATE = Mar-06-2008 09:49:40AM	DATE - FEB. 15 2008	REVISED - ---	REVISED - ---

**STATE OF ILLINOIS
DEPARTMENT OF TRANSPORTATION**

GENERAL NOTES

SCALE: _____ SHEET NO. ___ OF ___ SHEETS STA. _____ TO STA. _____

F.A.I. RTE.	SECTION	COUNTY	TOTAL SHEETS	SHEET NO.
55	*	SANGAMON	14	2
CONTRACT NO. 72B85				
FED. ROAD DIST. NO. - ILLINOIS FED. AID PROJECT				

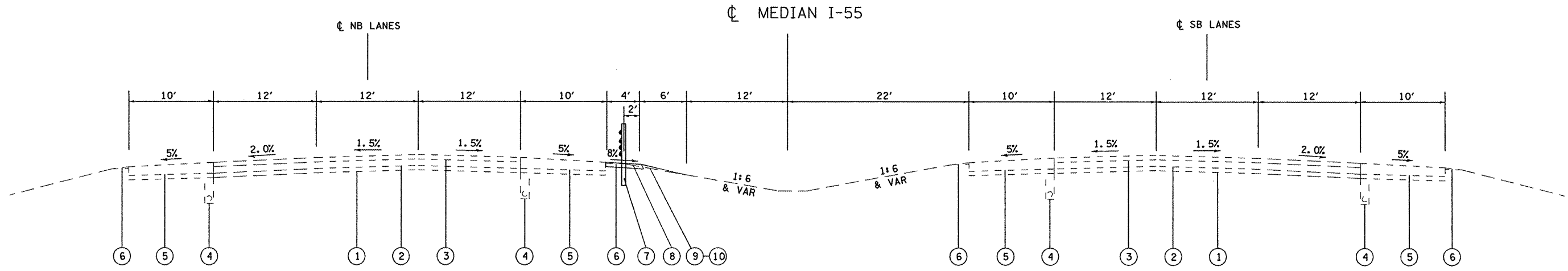
ILLINOIS DEPARTMENT OF TRANSPORTATION
SUMMARY OF QUANTITIES

LOCATION OF WORK				I-55 90% FED / 10% STATE
SUMMARY OF QUANTITIES				CONSTRUCTION TYPE CODE
CODE NO.	ITEM	UNIT	TOTAL QUANTITY	SFTY-4A
28000250	TEMPORARY EROSION CONTROL SEEDING	POUND	400	400
20200600	EXCAVATING AND GRADING EXISTING SHOULDER	UNIT	286.3	286.3
20400800	FURNISHED EXCAVATION	CU YD	2,121	2,121
25001000	SEEDING, CLASS 2 (SPECIAL)	ACRE	4.0	4.0
25100630	EROSION CONTROL BLANKET	SQ YD	19086	19086
48203013	HOT-MIX ASPHALT SHOULDERS, 4"	SQ YD	12,724	12,724
67100100	MOBILIZATION	L SUM	1	1
70100700	TRAFFIC CONTROL AND PROTECTION, STANDARD 701406	L SUM	1	1
70103815	TRAFFIC CONTROL SURVEILLANCE	CAL DA	5	5
70106800	CHANGEABLE MESSAGE SIGN	CAL MO	4	4
X0325231	CABLE GUARD MARKER	EACH	716	716
X0325589	HIGH TENSION CABLE MEDIAN BARRIER	FOOT	28,229	28,229
X0325590	HIGH TENSION CABLE MEDIAN BARRIER TERMINAL	EACH	8	8
X0325606	HIGH TENSION CABLE MEDIAN BARRIER DEMONSTRATION	EACH	2	2

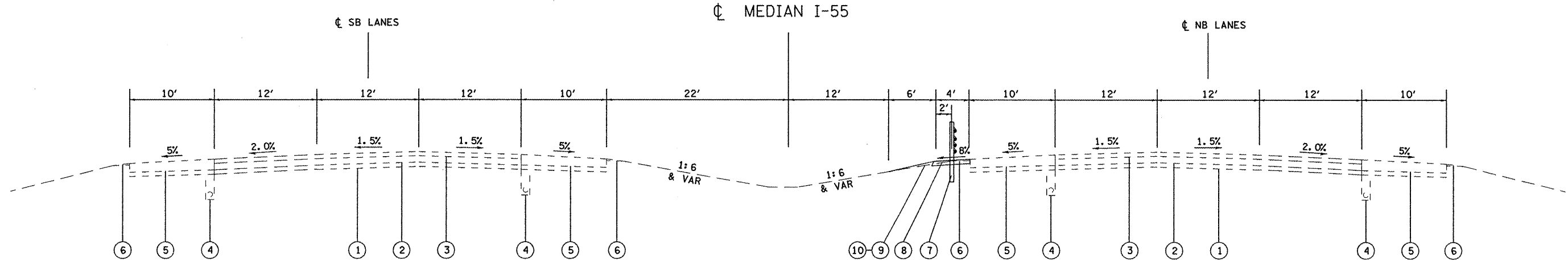
FILE NAME : C:\Projects\4672b85\4672b85-sht-soq.dgn	USER NAME : laughlinr1	DESIGNED - BKL	REVISED -	STATE OF ILLINOIS DEPARTMENT OF TRANSPORTATION	SUMMARY OF QUANTITIES	F.A.I. RTE. 55	SECTION •	COUNTY SANGAMON	TOTAL SHEETS 14	SHEET NO. 3
PLOT SCALE : 100.0000' / IN.	CHECKED - JPM	DRAWN - BKL	REVISED -	SCALE: SHEET NO. OF SHEETS STA. TO STA.		FED. ROAD DIST. NO. [ILLINOIS] FED. AID PROJECT				
PLOT DATE : Mar-10-2008 @ 9:16:14AM	DATE - FEB. 15 2008	REVISOR -	REVISED -			CONTRACT NO. 72B85				

Rev.

* - D-6 CABLE MEDIAN BAR #3



LT. STA 338+39.72 to LT. STA 366+10.20
 LT. STA 417+94.12 to LT. STA 511+68.87



RT. STA 222+91.13 to RT. STA 337+35.95
 RT. STA 370+61.55 to RT. STA 421+00.27

LEGEND

- ① EX SUB-BASE GRANULAR MATERIAL 6"
- ② EX 10" SRPCC PAVEMENT
- ③ EX BITUMINOUS CONCRETE 5" AND VAR
- ④ EX PIPE UNDERDRAIN
- ⑤ EX BITUMINOUS SHOULDERS
- ⑥ EX AGGREGATE SHOULDER
- ⑦ PR HIGH TENSION CABLE MEDIAN BARRIER
- ⑧ PR HOT-MIX ASPHALT SHOULDERS 4"
- ⑨ FURNISHED EXCAVATION
- ⑩ EROSION CONTROL BLANKET

• 2.0 SQ FT X-SECT. WAS USED TO ESTIMATE FURNISHED EXCAVATION

• - D-6 CABLE MEDIAN BAR #3

FILE NAME = C:\Projects\1672b85\1672b85-shr-typical.dgn	USER NAME = laughlinr1	DESIGNED - BKL	REVISED -	STATE OF ILLINOIS DEPARTMENT OF TRANSPORTATION	TYPICAL SECTIONS			F.A.I. RTE. 55	SECTION •	COUNTY SANGAMON	TOTAL SHEETS 14	SHEET NO. 4
PLOT SCALE = 100.0000' / IN.	CHECKED - JPM	DRAWN - BKL	REVISED -		SCALE:	SHEET NO.	OF	SHEETS	STA.	TO STA.	CONTRACT NO. 72B85	
PLOT DATE = Mar-06-2008 02:06:34PM	DATE - FEB. 15 2008	CHECKED - JPM	REVISED -								FED. ROAD DIST. NO. ILLINOIS FED. AID PROJECT	
		DATE - FEB. 15 2008	REVISED -									

20200600 EXCAVATING AND GRADING EXISTING SHOULDER							
LOCATION				QUANTITY (FOOT)	QUANTITY (UNIT)		
RT. STA.	222+91.13	TO	RT. STA. 337+35.95	11444.82	114.45		
LT. STA.	338+39.72	TO	LT. STA. 366+10.21	2770.49	27.70		
RT. STA.	370+61.55	TO	RT. STA. 421+00.27	5038.72	50.39		
LT. STA.	417+94.12	TO	LT. STA. 511+68.87	9374.75	93.75		
TOTAL					286.29		

48203013 HOT-MIX ASPHALT SHOULDERS, 4"								
LOCATION				LENGTH (FOOT)	WIDTH (FOOT)	AREA (SQ YD)		
RT. STA.	222+91.13	TO	RT. STA. 337+35.95	11444.82	4.00	5086.59		
LT. STA.	338+39.72	TO	LT. STA. 366+10.2	2770.48	4.00	1231.32		
RT. STA.	370+61.55	TO	RT. STA. 421+00.27	5038.72	4.00	2239.43		
LT. STA.	417+94.12	TO	LT. STA. 511+68.87	9374.75	4.00	4166.56		
TOTAL						12723.90		

20400800 FURNISHED EXCAVATION							
LOCATION				QUANTITY (FOOT)	AREA (SQ FT)	QUANTITY (CU YD)	
RT. STA.	222+91.13	TO	RT. STA. 337+35.95	11444.82	2.00	847.76	
LT. STA.	338+39.72	TO	LT. STA. 366+10.2	2770.48	2.00	205.22	
RT. STA.	370+61.55	TO	RT. STA. 421+00.27	5038.72	2.00	373.24	
LT. STA.	417+94.12	TO	LT. STA. 511+68.87	9374.75	2.00	694.43	
TOTAL						2120.65	

X0325261 CABLE GUARD MARKER								
LOCATION				LENGTH (FOOT)	INCREMENT (FOOT)	TOTAL (EACH)		
RT. STA.	222+91.13	TO	RT. STA. 337+35.95	11444.82	40.00	286		
LT. STA.	338+39.72	TO	LT. STA. 366+10.2	2770.48	40.00	69		
RT. STA.	370+61.55	TO	RT. STA. 421+00.27	5038.72	40.00	126		
LT. STA.	417+94.12	TO	LT. STA. 511+68.87	9374.75	40.00	234		
TOTAL						716		

25001000 SEEDING CLASS 2 (SPECIAL)							
LOCATION				LENGTH (FOOT)	WIDTH (FOOT)	AREA (ACRES)	
RT. STA.	222+91.13	TO	RT. STA. 337+35.95	11444.82	6.00	1.58	
LT. STA.	338+39.72	TO	LT. STA. 366+10.2	2770.48	6.00	0.38	
RT. STA.	370+61.55	TO	RT. STA. 421+00.27	5038.72	6.00	0.69	
LT. STA.	417+94.12	TO	LT. STA. 511+68.87	9374.75	6.00	1.29	
TOTAL						3.94	

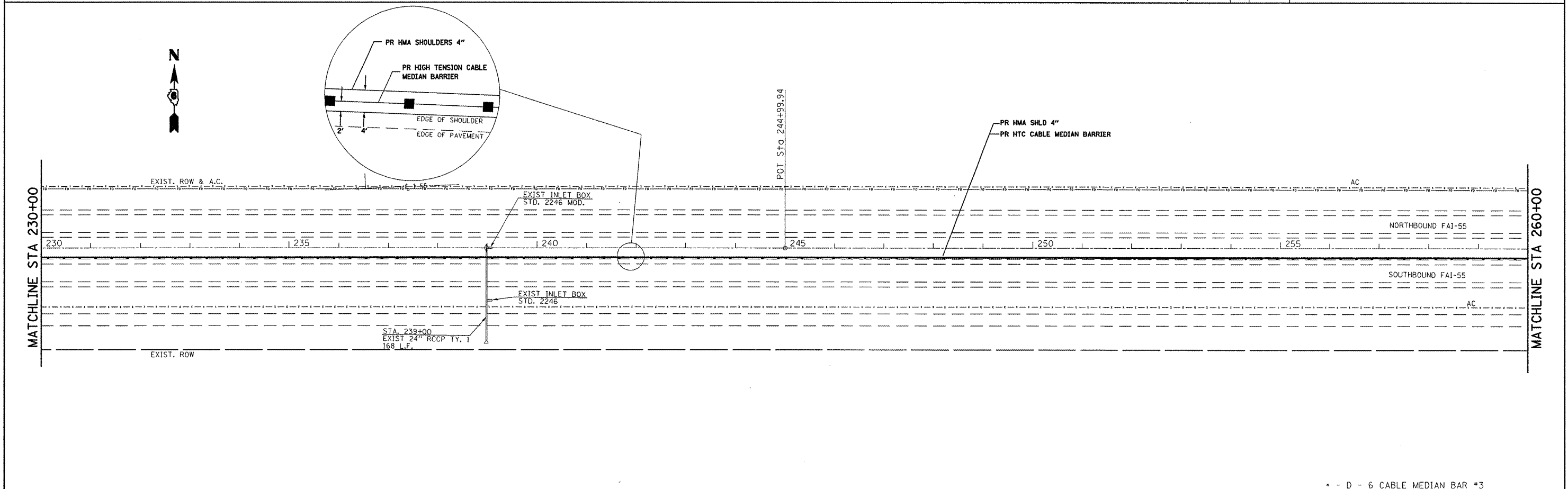
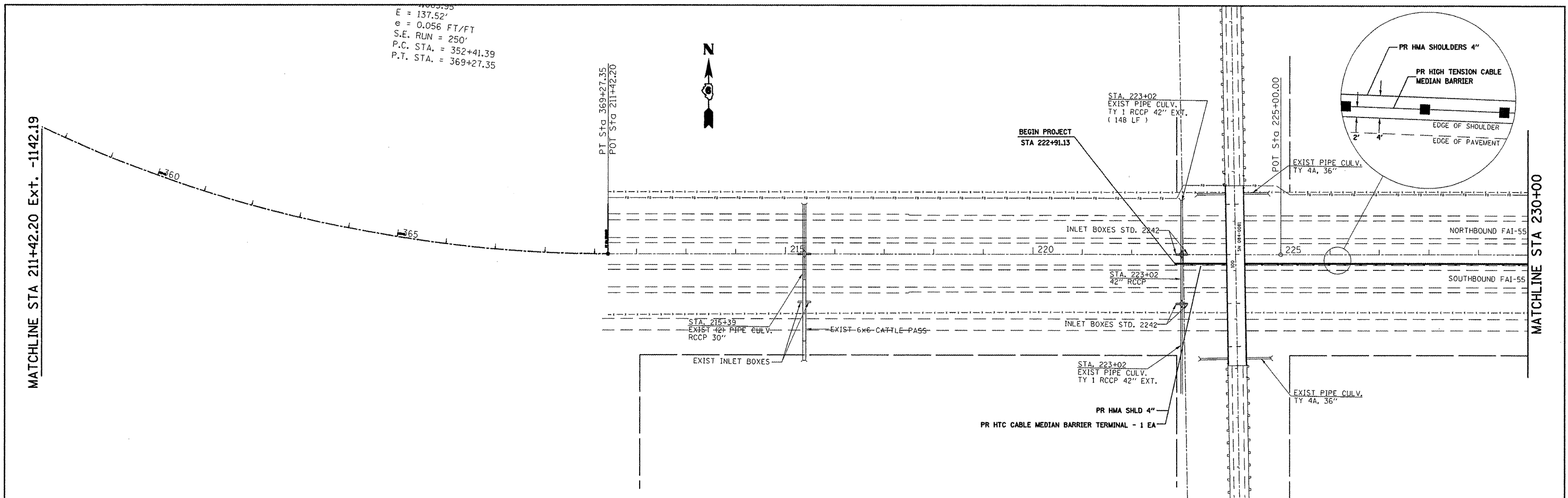
X0325231 HIGH TENSION CABLE MEDIAN BARRIER				
LOCATION				LENGTH (FOOT)
RT. STA.	223+41.13	TO	RT. STA. 336+85.95	11344.82
LT. STA.	338+89.72	TO	LT. STA. 365+60.2	2670.48
RT. STA.	371+11.55	TO	RT. STA. 420+50.27	4938.72
LT. STA.	418+44.12	TO	LT. STA. 511+18.87	9274.75
TOTAL				28228.77

25100630 EROSION CONTROL BLANKET							
LOCATION				LENGTH (FOOT)	WIDTH (FOOT)	AREA (ACRES)	
RT. STA.	222+91.13	TO	RT. STA. 337+35.95	11444.82	6.00	7,629.5	
LT. STA.	338+39.72	TO	LT. STA. 366+10.2	2770.48	6.00	1,847.0	
RT. STA.	370+61.55	TO	RT. STA. 421+00.27	5038.72	6.00	3,359.8	
LT. STA.	417+94.12	TO	LT. STA. 511+68.87	9374.75	6.00	6,249.8	
TOTAL						19,086.1	

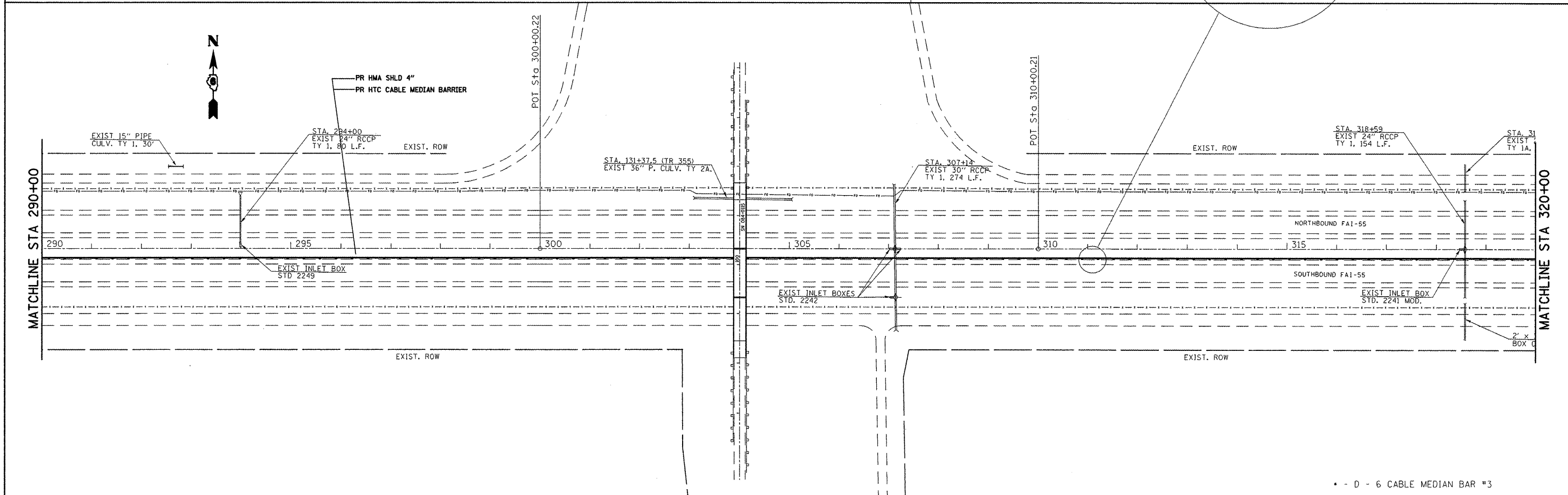
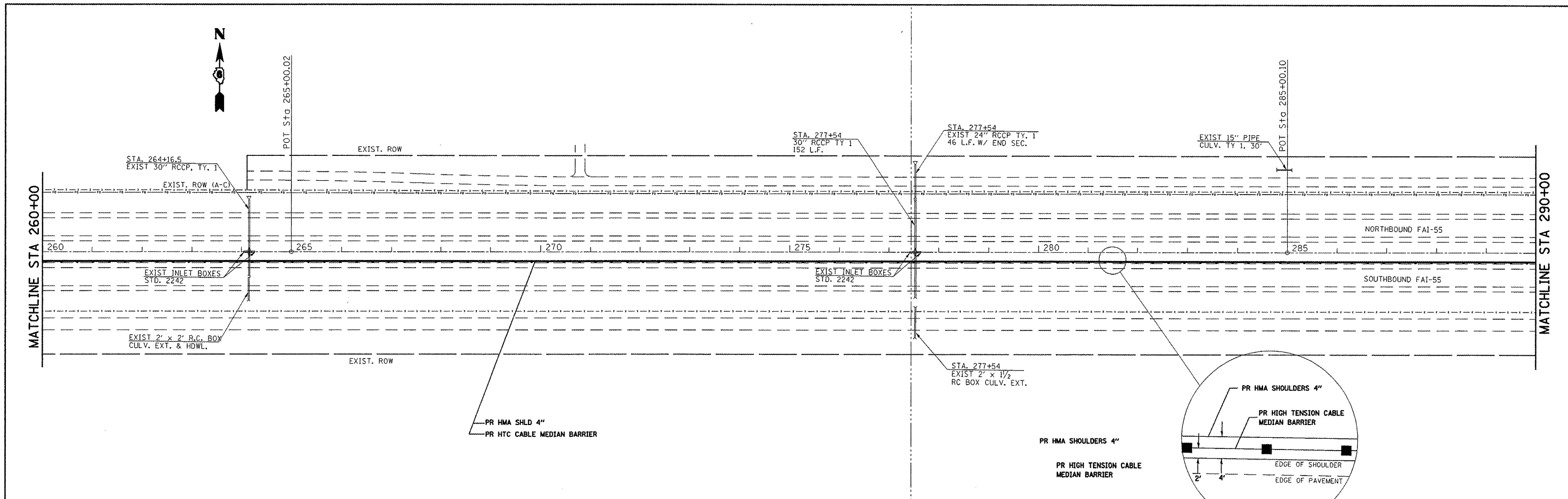
X0325590 HIGH TENSION CABLE MEDIAN BARRIER TERMINAL						
LOCATION						TOTAL (EACH)
RT. STA.	222+91.13	TO	RT. STA. 223+41.13			1
RT. STA.	336+85.95	TO	RT. STA. 337+35.95			1
RT. STA.	370+61.55	TO	RT. STA. 371+11.55			1
RT. STA.	420+50.27	TO	RT. STA. 421+00.27			1
LT. STA.	338+39.72	TO	LT. STA. 338+89.72			1
LT. STA.	365+60.2	TO	LT. STA. 366+10.2			1
LT. STA.	417+94.12	TO	LT. STA. 418+44.12			1
LT. STA.	511+18.87	TO	LT. STA. 511+68.87			1
TOTAL						8

* - D-6 CABLE MEDIAN BAR *3

FILE NAME = C:\Projects\4672b85\4672b85-sht-schedul	USER NAME = loughlinr1	DESIGNED - BKL	REVISED -	STATE OF ILLINOIS DEPARTMENT OF TRANSPORTATION	SCHEDULE OF QUANTITIES			F.A.J. RTE. 55	SECTION *	COUNTY SANGAMON	TOTAL SHEETS 14	SHEET NO. 5
		DRAWN - BKL	REVISED -		SCALE:	SHEET NO.	OF SHEETS	STA.	TO STA.	FED. ROAD DIST. NO.	ILLINOIS FED. AID PROJECT	CONTRACT NO. 72B85
		CHECKED - JPM	REVISED -									
		DATE - FEB. 15 2008	REVISED -									



FILE NAME = C:\Projects\1672b85\1672b85-shr-plan.dwg	USER NAME = loughlinr1	DESIGNED - BKL	REVISIONS -	STATE OF ILLINOIS DEPARTMENT OF TRANSPORTATION	PLAN SHEET SCALE: 1" = 100' SHEET NO. OF SHEETS STA. 211+42.20 TO STA. 260+00.00	F.A.I. RTE. 55	SECTION •	COUNTY SANGAMON	TOTAL SHEETS 14	SHEET NO. 6	
PLOT SCALE = 200.0000 / IN.	CHECKED - JPM	DATE - 02/15/08	REVISIONS -			CONTRACT NO. 72B85					
PLOT DATE = Mar-06-2008 02:06:39PM	DATE - 02/15/08	REVISIONS -	FED. ROAD DIST. NO. ILLINOIS FED. AID PROJECT								
* - D - 6 CABLE MEDIAN BAR #3											



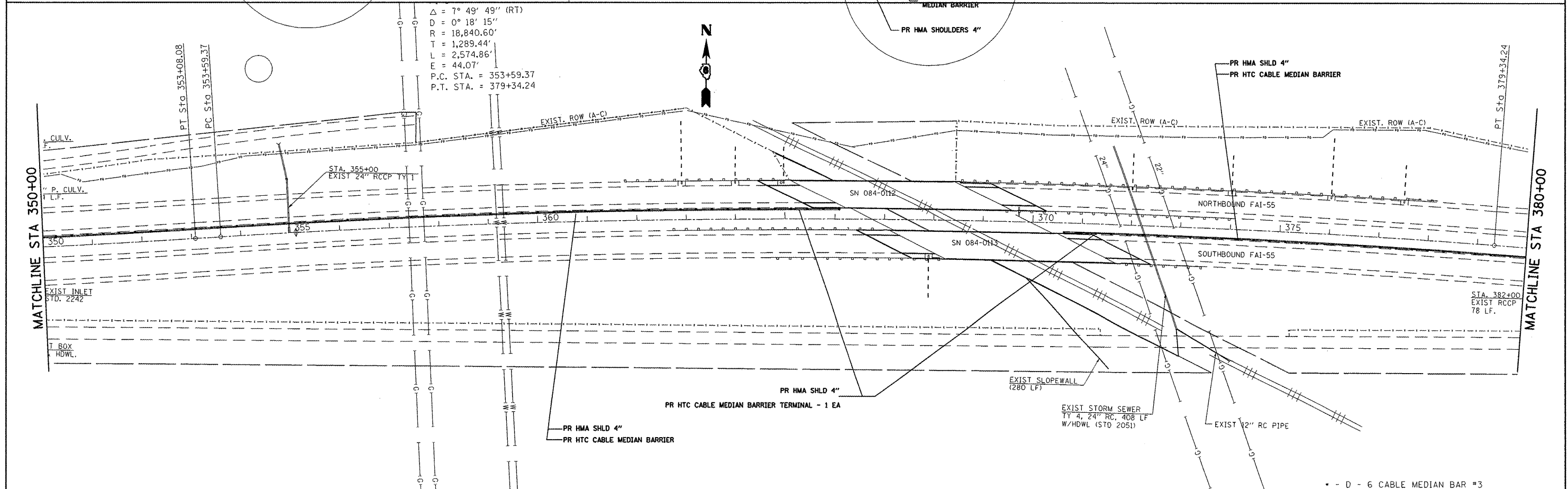
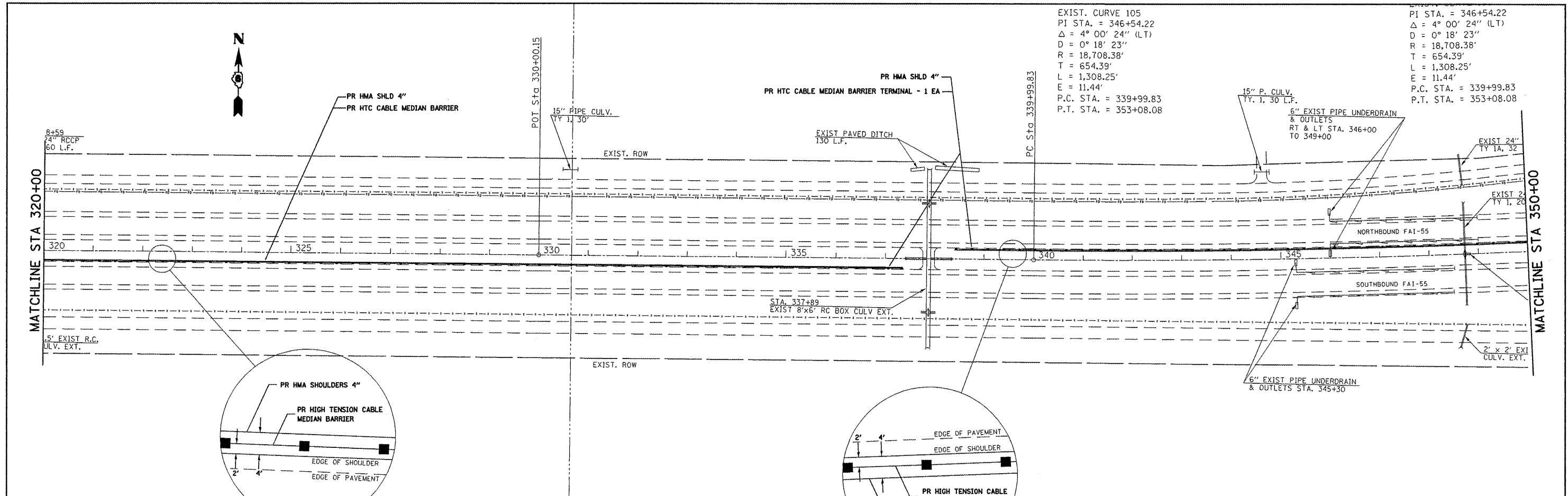
- D - 6 CABLE MEDIAN BAR #3

FILE NAME : C:\Projects\d672b85\d672b85-shr-plan.dwg	USER NAME : laughlinr1	DESIGNED - BKL	REVISED -
		DRAWN - BKL	REVISED -
		CHECKED - JPM	REVISED -
		DATE - 02/15/08	REVISED -

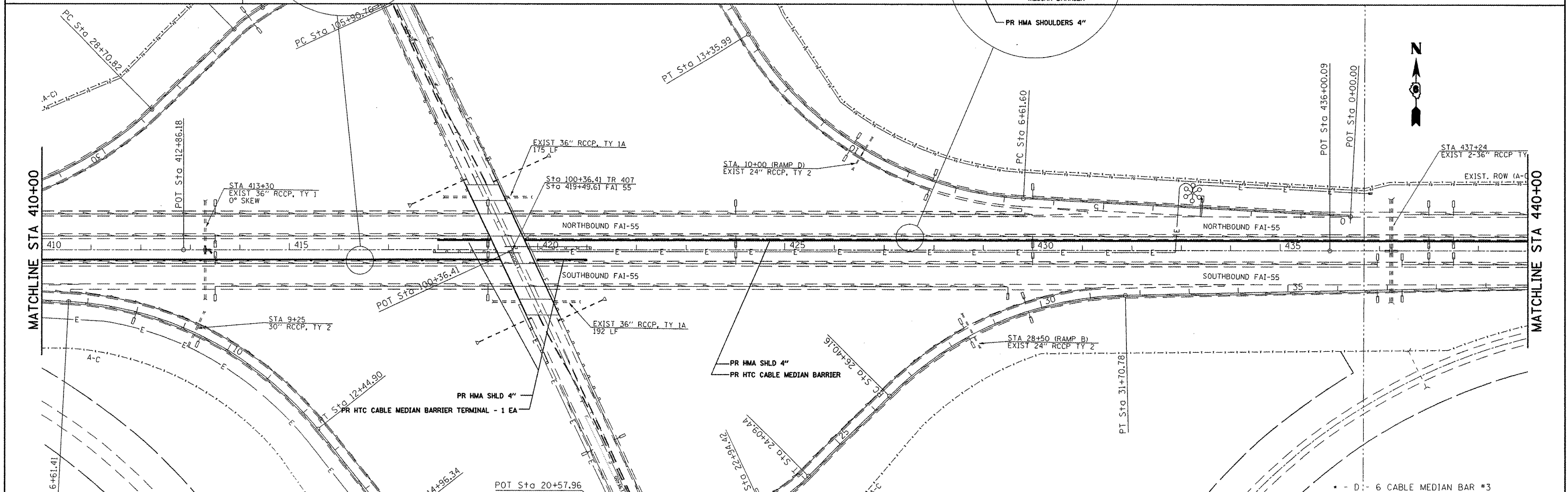
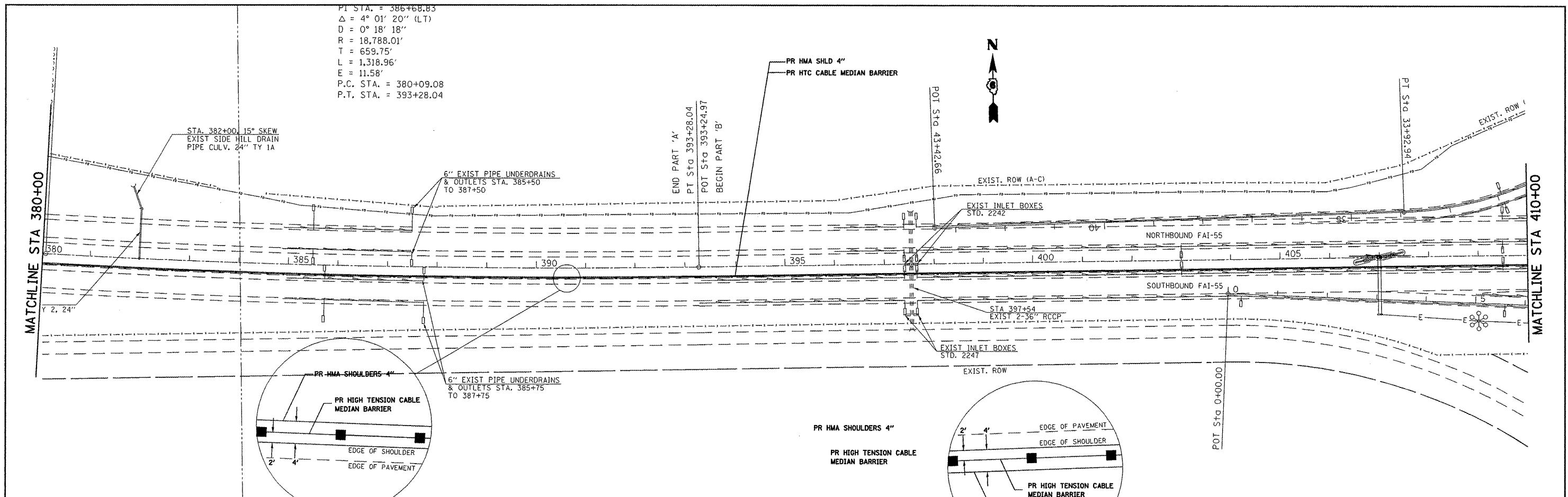
**STATE OF ILLINOIS
DEPARTMENT OF TRANSPORTATION**

PLAN SHEET	
SCALE: 1" = 100'	SHEET NO. OF SHEETS STA. 260+00.00 TO STA. 320+00.00

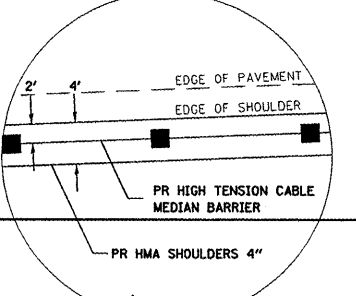
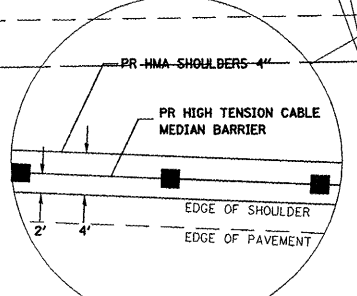
F.A.I. RTE. 55	SECTION *	COUNTY SANGAMON	TOTAL SHEETS 14	SHEET NO. 7
CONTRACT NO. 72B85				
FED. ROAD DIST. NO. ILLINOIS FED. AID PROJECT				



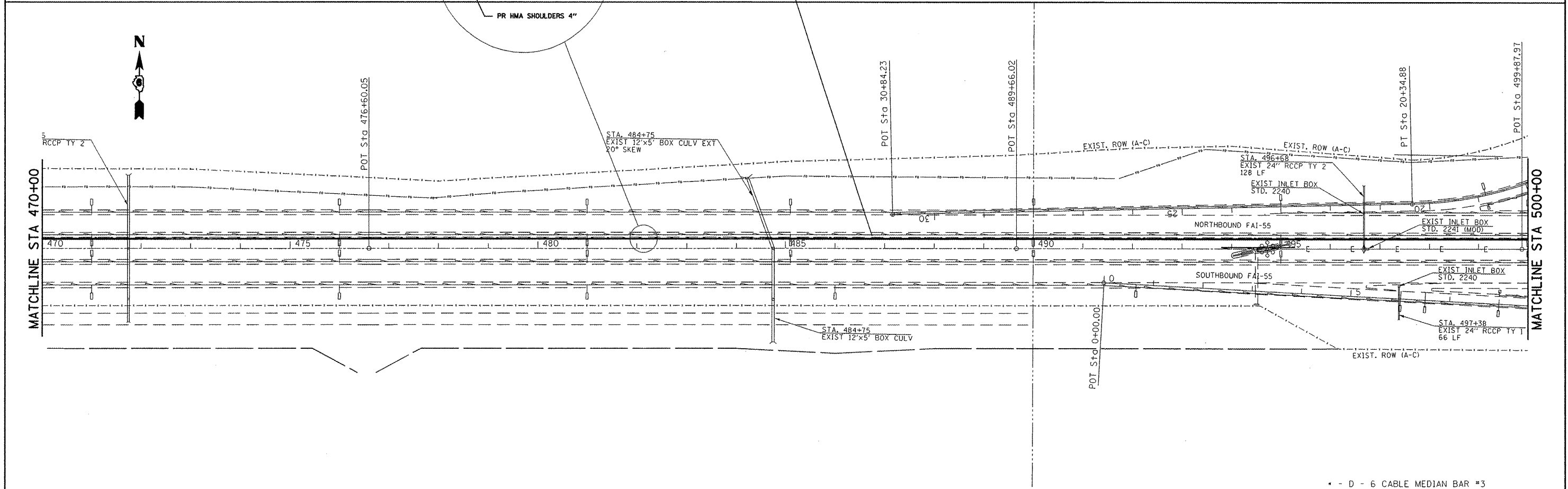
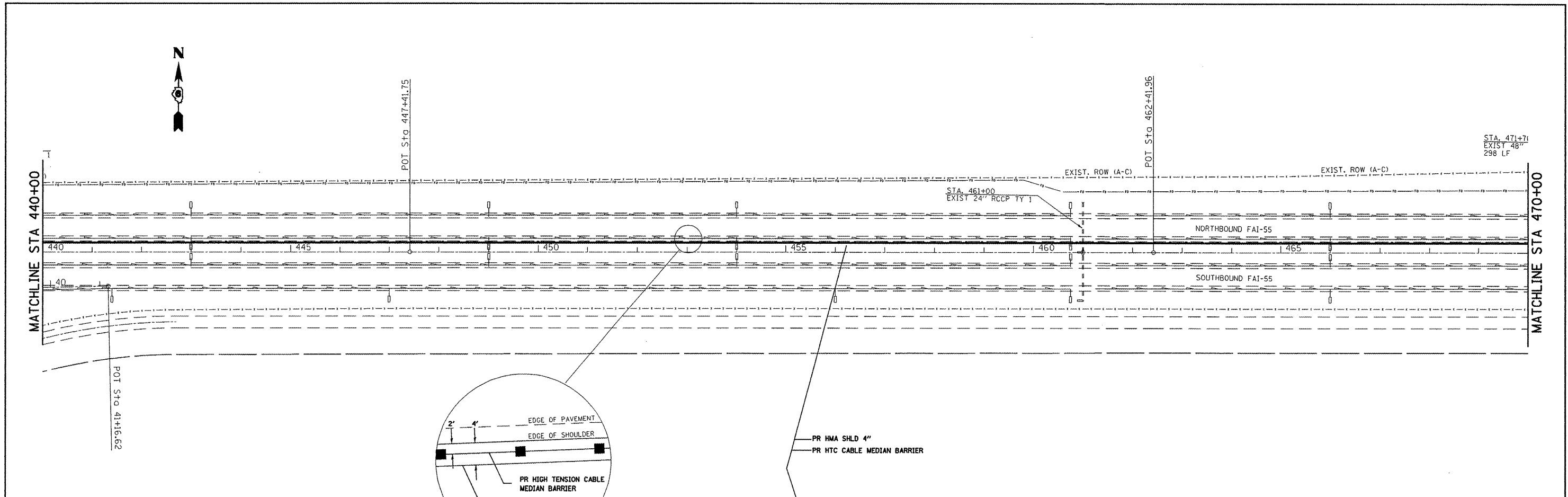
FILE NAME : C:\Projects\0672b85\0672b85-sht-plan.dwg	USER NAME : laughlinr1	DESIGNED - BKL	REVISD -	STATE OF ILLINOIS DEPARTMENT OF TRANSPORTATION	PLAN SHEET	F.A.I RTE. 55	SECTION .	COUNTY SANGAMON	TOTAL SHEETS 14	SHEET NO. 8		
PLOT SCALE = 200.0000' / IN.	CHECKED - JPM	DATE - 02/15/08	REVISD -			SCALE: 1" = 100'	SHEET NO. OF SHEETS	STA. 320+00.00 TO STA. 380+00.00	CONTRACT NO. 72B85			
PLOT DATE = Mon-06-2008 02:06:46PM	DATE - 02/15/08	REVISD -	REVISD -			FED. ROAD DIST. NO. [ILLINOIS] FED. AID PROJECT						
						* - D - 6 CABLE MEDIAN BAR #3						



P.I. STA. = 386+68.83
 $\Delta = 4^\circ 01' 20''$ (LT)
 $D = 0^\circ 18' 18''$
 $R = 18,788.01'$
 $T = 659.75'$
 $L = 1,318.96'$
 $E = 11.58'$
 P.C. STA. = 380+09.08
 P.T. STA. = 393+28.04



FILE NAME = C:\Projects\1672b85\1672b85-sht-plan.dwg	USER NAME = laughlinr1	DESIGNED - BKL	REVISED -	STATE OF ILLINOIS DEPARTMENT OF TRANSPORTATION	PLAN SHEET		F.A.I. RTE. 55	SECTION .	COUNTY SANGAMON	TOTAL SHEETS 14	SHEET NO. 9	
PLOT SCALE = 200.0000' / IN.	CHECKED - JPM	DATE - 02/15/08	REVISED -		SCALE: 1" = 100'	SHEET NO. OF SHEETS	STA. 380+00.00 TO STA. 260+00.00	CONTRACT NO. 72B85				
PLOT DATE = Mar-06-2008 02:06:49PM	DATE - 02/15/08	REVISED -	REVISED -		FED. ROAD DIST. NO. [ILLINOIS] FED. AID PROJECT							
					* - D - 6 CABLE MEDIAN BAR #3							



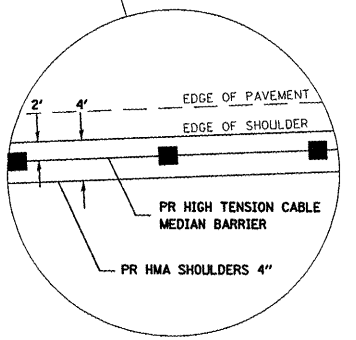
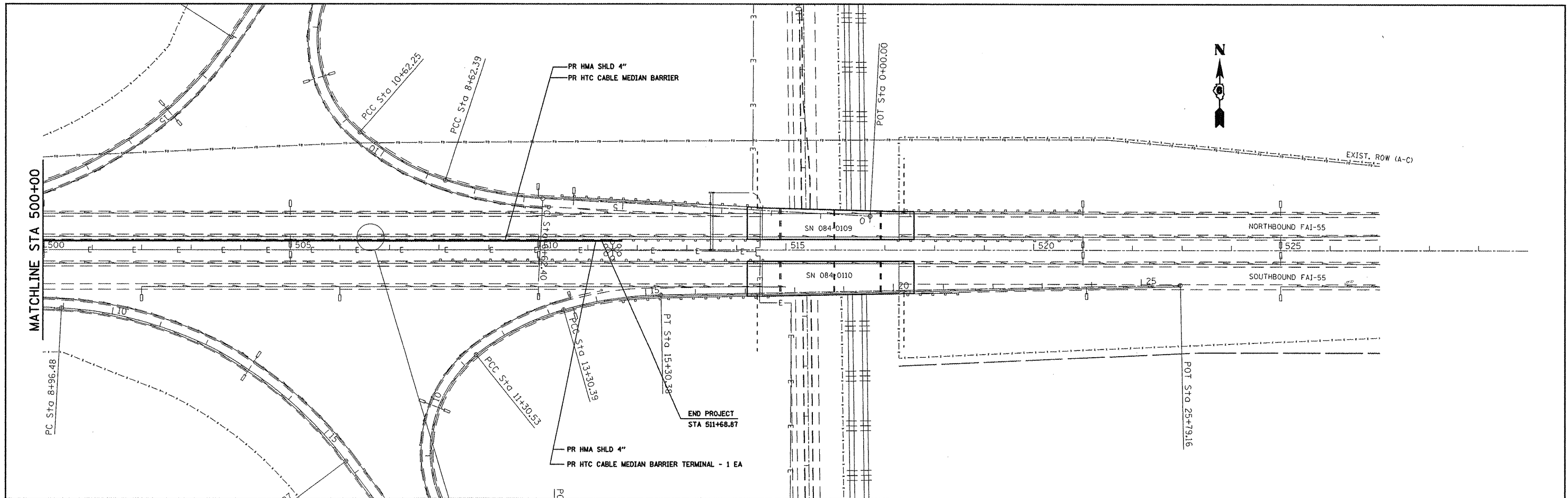
* - D - 6 CABLE MEDIAN BAR #3

FILE NAME = C:\Projects\4672b85\4672b85-shr-plan.dwg	USER NAME = laughlinr1	DESIGNED - BKL	REVISED -
PLOT SCALE = 200.0000' / IN.	CHECKED - JPM	DRAWN - BKL	REVISED -
PLOT DATE = Mar-06-2008 02:06:53PM	DATE - 02/15/08	CHECKED - JPM	REVISED -

**STATE OF ILLINOIS
DEPARTMENT OF TRANSPORTATION**

PLAN SHEET	
SCALE: 1" = 100'	SHEET NO. OF SHEETS
STA. 440+00.00 TO STA. 500+00.00	

F.A.J. RTE.	SECTION	COUNTY	TOTAL SHEETS	SHEET NO.
55	*	SANGAMON	14	10
CONTRACT NO. 72B85				
FED. ROAD DIST. NO. [ILLINOIS] FED. AID PROJECT				



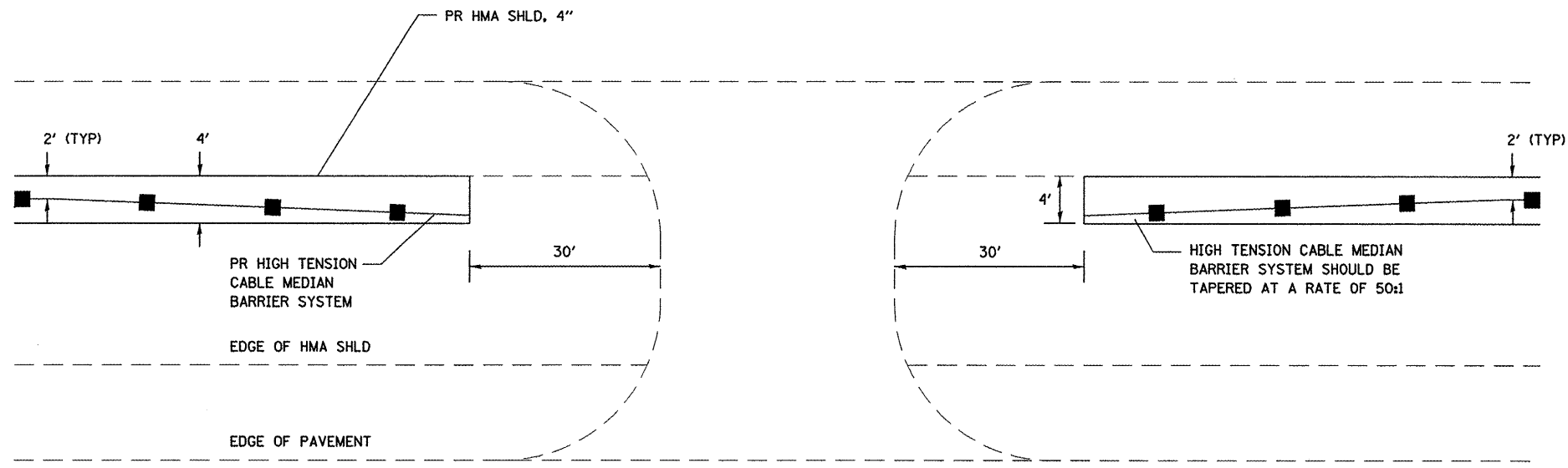
* - D - 6 CABLE MEDIAN BAR #3

FILE NAME =	USER NAME = laughlinr1	DESIGNED - BKL	REVISED -
C:\Projects\672b85\672b85-shr-plan.dgn		DRAWN - BKL	REVISED -
PLOT SCALE = 200.0000' / IN.		CHECKED - JPM	REVISED -
PLOT DATE = Mar-06-2008 02:06:56PM		DATE - 02/15/08	REVISED -

**STATE OF ILLINOIS
DEPARTMENT OF TRANSPORTATION**

PLAN SHEET	
SCALE: 1" = 100'	SHEET NO. OF SHEETS
STA. 500+00.00 TO STA. 525+00.00	

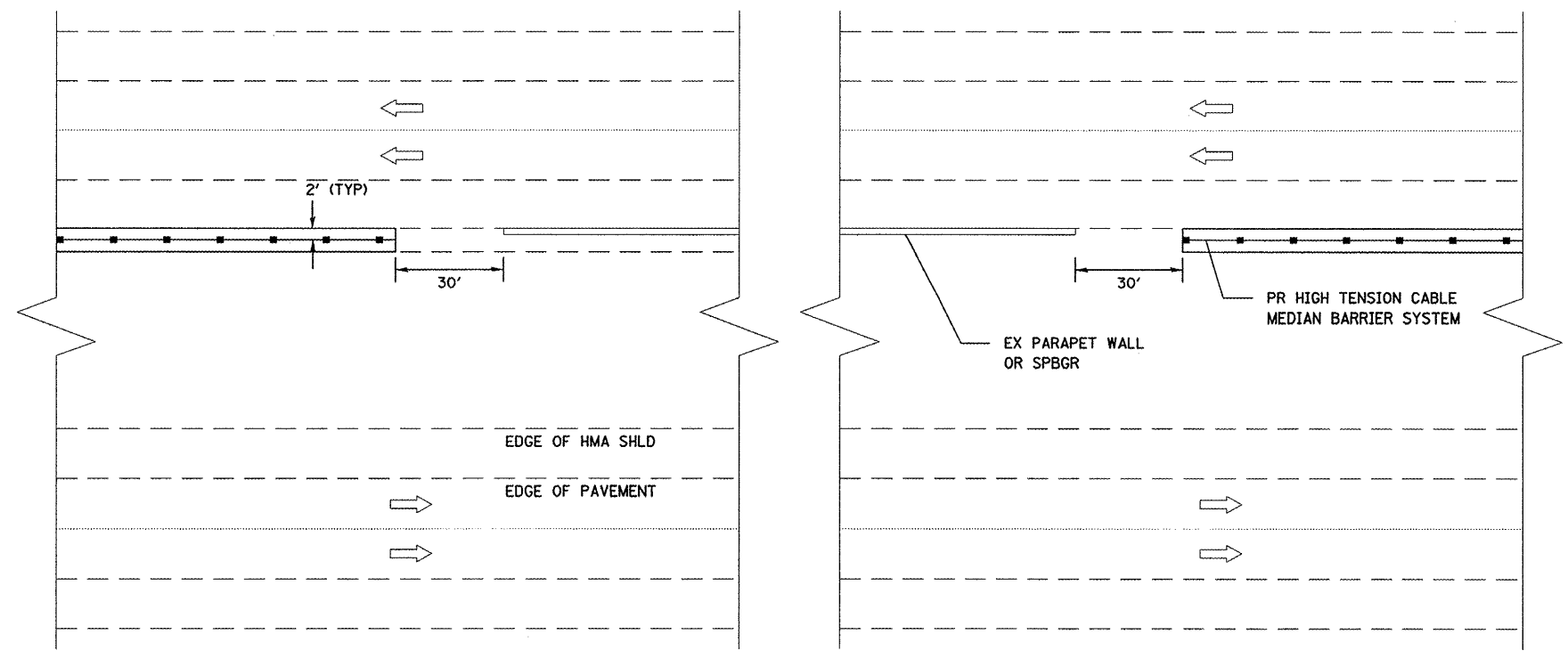
F.A.I. RTE.	SECTION	COUNTY	TOTAL SHEETS	SHEET NO.
55	•	SANGAMON	14	11
CONTRACT NO. 72B85				
FED. ROAD DIST. NO. ILLINOIS FED. AID PROJECT				



- NOTES:
1. POSTS SHALL BE DRIVEN, IN ACCORDANCE WITH MANUFACTURER'S SPECIFICATIONS.
 2. POST SPACING MAY BE ALTERED TO AVOID DRAINAGE STRUCTURES OR OTHER OBSTACLES.

NOT TO SCALE

EMERGENCY MEDIAN CROSSOVER



ADJACENT TO MAINLINE STRUCTURES

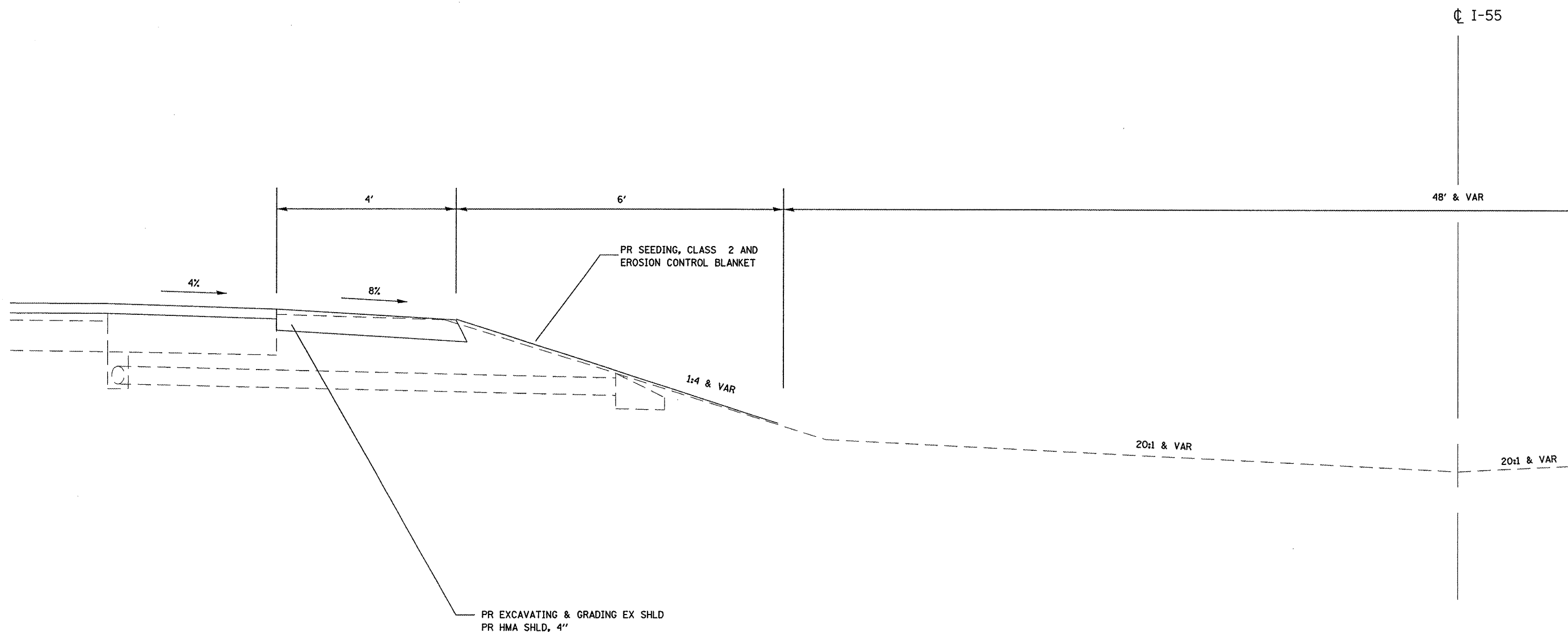
NOT TO SCALE

FILE NAME :	USER NAME = laughlinr1	DESIGNED - BKL	REVISED -
C:\Projects\4672b85\4672b85-shd-details.dgn		DRAWN - BKL	REVISED -
PLOT SCALE = 100.0000' / IN.		CHECKED - BKL	REVISED -
PLOT DATE = Mar-06-2008 02:06:59PM		DATE - 02/15/08	REVISED -

STATE OF ILLINOIS
DEPARTMENT OF TRANSPORTATION

HIGH TENSION CABLE DETAIL				
SCALE:	SHEET NO.	OF	SHEETS	STA. TO STA.

- - D - 6 CABLE MEDIAN BAR #3				
F.A.I. RTE.	SECTION	COUNTY	TOTAL SHEETS	SHEET NO.
55		SANGAMON	14	12
FED. ROAD DIST. NO. [ILLINOIS] FED. AID PROJECT			CONTRACT NO. 72B85	



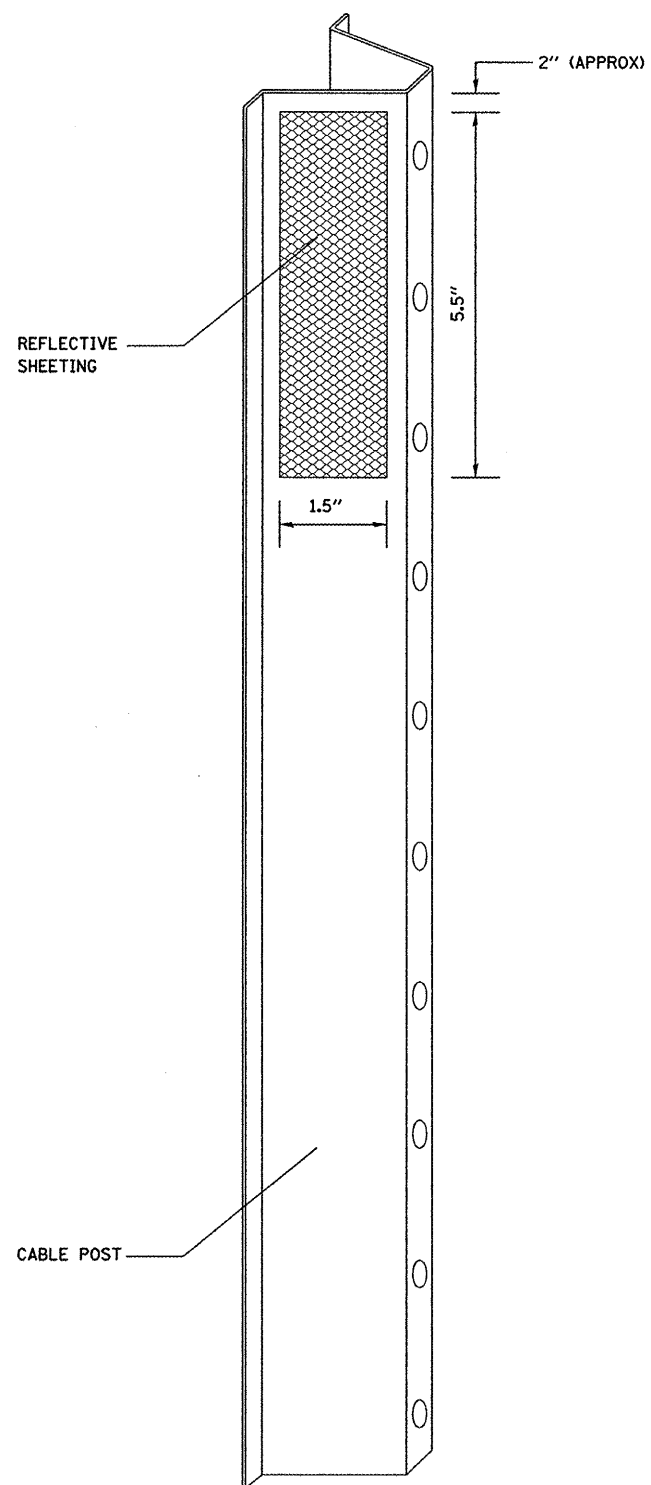
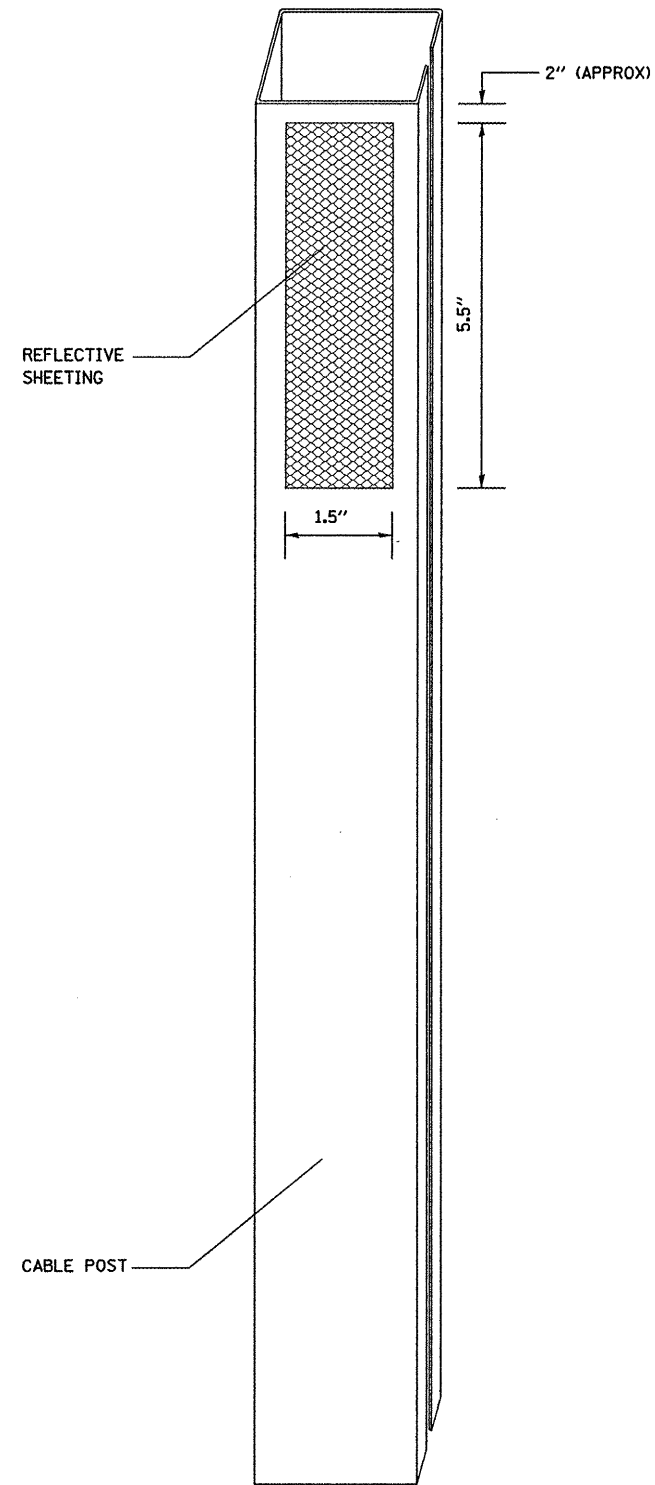
NOTES:

- EXCAVATION FOR THE HMA SHOULDER WILL BE MEASURED AND PAID FOR AS EXCAVATING AND GRADING EXISTING SHOULDER, WHICH SHALL INCLUDE GRADING AND COMPACTING THE FILL AREA TO THE SATISFACTION OF THE ENGINEER.
- LOCATIONS THAT REQUIRE ADDITION FILL TO PROVIDE A MINIMUM 1:4 FORSLOPE WILL BE PAID FOR AS FURNISHED EXCAVATION.
- EXISTING PIPE UNDERDRAIN STRUCTURES SHALL REMAIN IN PLACE AND GRADING SHALL BE INCLUDED IN THE COST OF "EXCAVATING AND GRADING EXISTING SHOULDER"

NOT TO SCALE

* - D - 6 CABLE MEDIAN BAR #3

FILE NAME =	USER NAME = laughlinr1	DESIGNED - BKL	REVISED -	STATE OF ILLINOIS DEPARTMENT OF TRANSPORTATION	HIGH TENSION CABLE DETAIL	F.A.J. RTE.	SECTION	COUNTY	TOTAL SHEETS	SHEET NO.	
C:\Projects\4672685\4672685-shd-details.dgn	PLOT SCALE = 100.0000' / IN.	DRAWN - BKL	REVISED -			55	*	SANGAMON	14	13	
	PLOT DATE = Mar-10-2008 09:16:36AM	CHECKED - BKL	REVISED -			CONTRACT NO. 72B85					
	DATE - 02/15/08	REVISIED -	REVISED -			FED. ROAD DIST. NO. ILLINOIS FED. AID PROJECT					
						SCALE:	SHEET NO.	OF	SHEETS	STA.	TO STA.



NOTES:

MATERIAL: THE MATERIAL SHALL BE IN ACCORDANCE WITH SECTION 1090 AND 1091 OF THE STANDARD SPECIFICATIONS.

CONSTRUCTION REQUIREMENTS: THE REFLECTIVE SHEETING SHALL BE INSTALLED DIRECTLY ON THE CABLE POSTS. THE REFLECTIVE SHEETING SHALL BE INSTALLED AS SHOWN IN THE PLANS, ON EVERY OTHER POST (IN ORDER TO PROVIDE A SPACING OF 40'). THE SURFACE OF THE POST SHALL BE CLEANED OF ALL CONTAMINANTS PRIOR TO THE INSTALLATION OF THE REFLECTIVE SHEETING. THE SURFACE SHALL BE CLEANED USING A 5-8 PERCENT PHOSPHORIC ACID SOLUTION AND RINSED WITH CLEAN WATER OR AS RECOMMENDED BY THE MANUFACTURER OF THE REFLECTIVE SHEETING AND AS APPROVED BY THE ENGINEER.

BASIS OF PAYMENT: THIS WORK WILL BE PAID FOR AT THE CONTRACT UNIT PRICE EACH FOR CABLE GUARD MARKER.

* - D - 6 CABLE MEDIAN BAR #3

FILE NAME = C:\Projects\672b85\672b85-sht-details.dgn	USER NAME = leughlin1	DESIGNED - BKL	REVISED -
		DRAWN - BKL	REVISED -
	PLOT SCALE = 100.0000' / IN.	CHECKED - BKL	REVISED -
	PLOT DATE = Mar-06-2008 02:07:03PM	DATE - 02/15/08	REVISED -

**STATE OF ILLINOIS
DEPARTMENT OF TRANSPORTATION**

HIGH TENSION CABLE DETAIL

SCALE:	SHEET NO.	OF	SHEETS	STA.	TO STA.
--------	-----------	----	--------	------	---------

F.A.I. RTE.	SECTION	COUNTY	TOTAL SHEETS	SHEET NO.
55	*	SANGAMON	14	14
FED. ROAD DIST. NO.			ILLINOIS FED. AID PROJECT	
CONTRACT NO. 72B85				

CONTROLS - EROSION CONTROLS AND SEDIMENT CONTROLS

Description of Stabilization Practices at the Beginning of Construction:

1. The area between the existing and proposed right-of-way/temporary easement boundaries and limits of the project will be improved and managed for the purposes of controlling erosion within the area, reducing water flow by temporary diversion and minimizing siltation into the construction zone, and establishing vegetative cover which will become permanent vegetation and act as an erosion barrier. Work at the beginning of construction will consist of the following:
 - (a) Areas of existing vegetation (woods and grasslands) outside the proposed construction slope limits shall be identified for preserving and shall be protected from mowing, brush cutting, tree removal and other activities which would be detrimental to their maintenance and development.
 - (b) Dead, diseased, or unsuitable vegetation within the site shall be removed as directed by the Engineer, along with required tree removal.
 - (c) As soon as reasonable access is available (such as trees cleared) to all locations where water drains away from the project, sediment basins, riprap ditch checks, temporary ditch checks, and/or erosion control fence shall be installed as called out in this plan and directed by the Engineer.
 - (d) Bare and sparsely vegetated ground in highly erodible areas as determined by the Engineer shall be temporarily seeded at the beginning of construction where no construction activities are immediately expected as stated in the special provision "Temporary Erosion Control Seeding".
 - (e) Immediately after tree removal is completed in certain areas which are highly erodible areas as determined by the Engineer, the areas shall be temporarily seeded where no construction activities are immediately expected as stated in the special provision "Temporary Erosion Control Seeding".
 - (f) At locations where a significant amount of water drains into the construction zone from outside areas (adjacent landowners), erosion control fence, temporary ditch checks, or riprap ditch checks will be utilized to locally divert water, reduce flow rates, and collect outside siltation inside the right-of-way line. Erosion control items will not be allowed to be installed to cause flooding to upstream private property which could cause crop damages or other undesirable conditions.
2. Establishment of these temporary erosion control measures will have additional benefits to the project. Desirable grass seed will become established in these areas and will spread seeds onto the construction site until permanent seeding/mowing and overseeding can be complete.
3. A third benefit of these filter areas is that they will begin to provide a screen and buffer. They will help protect the construction site from winds and excess sun and mitigate construction noise and dust.

Description of Stabilization Practices During Construction:

1. During roadway construction, areas outside the construction slope limits as outlined previous herein shall be protected from damaging effects of construction. The Contractor shall not use this area for staging (except as designated on the plans or directed by the Engineer), parking of vehicles or construction equipment, storage of materials, or other construction related activities.
 - (a) Within the construction zone, critical areas which have high flows of water as determined by the Engineer shall remain undisturbed until full scale construction is underway to prevent unnecessary soil erosion.
 - (b) Top soil and earth stockpiles shall be temporarily seeded if they are to remain unused for more than fourteen days.
 - (c) As the Contractor constructs a portion of roadway in a fill section, he/she shall follow the following steps as directed by the Engineer:
 - I. Place temporary erosion control systems at locations where water leaves and enters the construction zone
 - II. Temporary seed highly erodible areas outside the construction slope limits
 - III. Construct roadside ditches and provide temporary erosion control systems
 - IV. Temporary divert water around proposed culvert locations
 - V. Build necessary embankment at culvert locations and then excavate and place culvert
 - VI. Continue building up the embankment to the proposed grade while at the same time place permanent erosion control such as riprap ditch lining and conduct final shaping to the slopes
 - (d) The Contractor shall immediately follow major earth moving operations with final grading equipment. After the major earth spread operation has moved to a new location, final grading shall be completed within fourteen days. If grading is not completed within fourteen days, all major earth moving operations will be stopped, as directed by the Engineer, until disturbed areas are final graded and seeded.
 - (e) Excavated areas and embankments shall be permanently seeded when final graded. If not, they shall be temporarily seeded as stated in the special provision "Temporary Erosion Control Seeding".

- (f) Construction equipment shall be stored and fueled only at designated locations. All necessary measures shall be taken to contain any fuel or pollution run-off in compliance with EPA water quality regulations. Leaking equipment or supplies shall be immediately repaired or removed from the site.
- (g) The Resident Engineer shall inspect the project daily during activities and weekly or after large rains during the winter shutdown period. The project shall additionally be inspected by the Construction Field Engineer on a bi-weekly basis to determine that erosion control efforts are in place and effective and if other control work is necessary.
- (h) Sediment collected during construction by the various temporary erosion control systems shall be disposed of on the site on a regular basis as directed by the Engineer. The cost of this maintenance will be paid for in accordance with Article 109.04 of the Standard Specifications.
- (i) The temporary erosion control systems shall be removed as directed by the Engineer after use is no longer needed or no longer functioning. The costs of this removal shall be included in the unit bid price for the temporary erosion control system. No additional compensation will be allowed.

Description of Structural Practices After Final Grading:

1. Temporary erosion control systems shall be left in place with proper maintenance until permanent erosion control is in place and working properly and all proposed turf areas seeded and established with a proper stand.
2. Once permanent erosion control systems as proposed in the plans are functional and established, temporary items shall be removed, cleaned up, and disturbed turf reseeded. Temporary riprap ditch checks will be allowed to remain in place where approved by the Engineer.

Maintenance after Construction:

1. Construction is complete after acceptance is received at the final inspection.
2. Areas will be inspected on a regular basis by IDOT District 6 Bureau of Operations.
3. Maintenance crews will perform regular mowings to aid in keeping weeds down and establishing a good roadside seed stand.
4. Maintenance crews will also aid in any ditch lining maintenance or in any drainage problems.
5. All maintenance will be conducted at times when weather conditions will not cause site damage.

DOCUMENTATION

1. A report summarizing the scope of the inspection, name(s) and qualifications of personnel making the inspection, date(s) of the inspection, major observations relating to the implementation of this storm water pollution prevention plan, and actions taken in accordance with Section 4.b. shall be made and retained as part of the plan for at least three years after the date of inspection. The report shall be signed in accordance with part VI.G of the general permit.
2. If any violation of the provisions of this plan is identified during the conduct of the construction work covered by this plan, the Resident Engineer or Resident Technician shall complete and file an "Incident of Noncompliance (ION)" report for the identified violation. The Resident Engineer or Resident Technician shall use forms provided by the Illinois Environmental Protection Agency and shall include specific information on the noncompliance, actions which were taken to prevent any further causes of noncompliance, and a statement detailing any environmental impact which may have resulted from the noncompliance. All reports of noncompliance shall be signed by a responsible authority in accordance with Part VI.G. of the general permit. The report of noncompliance shall be mailed to the following address:

Illinois Environmental Protection Agency
 Division of Water Pollution Control
 2200 Churchill Road, P.O. Box 19276
 Springfield, IL 62794-9276
 Attn: Compliance Assurance Section

• D - 6 CABLE MEDIAN BAR #3

FILE NAME = SWPPLAN.DGN	USER NAME = laughlinr1	DESIGNED -	REVISED - AUG 2007 (JCN)	STATE OF ILLINOIS DEPARTMENT OF TRANSPORTATION	STORM WATER POLLUTION PREVENTION PLAN	F.A.I. RTE. 55	SECTION *	COUNTY SANGAMON	TOTAL SHEETS 14	SHEET NO. 14B		
PLOT SCALE = 40,0000' / IN.	CHECKED - JCN	DRAWN - CADD	REVISED -			SCALE:	SHEET NO. OF SHEETS STA. TO STA.	CONTRACT NO. 72885				
PLOT DATE = Apr-02-2008 03:23:07PM	DATE - APRIL 5, 1999	CHECKED - JCN	REVISED -			FED. ROAD DIST. NO. ILLINOIS FED. AID PROJECT						
		DATE - APRIL 5, 1999	REVISED -									

CONTRACTOR CERTIFICATION STATEMENT

This certification statement is part of the Storm Water Pollution Plan for the project described below in accordance with NPDES Permit No. ILR10 _____, issued by the Illinois Environmental Protection Agency on _____.

Route: _____ Marked: _____
 Section: _____ Project No.: _____
 County: _____ Contract No.: _____

I certify under penalty of law that I understand the terms of the general National Pollutant Discharge Elimination System (NPDES) permit that authorizes the storm water discharges associated with industrial activity from the construction site identified as part of this certification.

Signature _____ Date _____
 Title _____
 Name of Firm _____
 Street Address _____
 City, State, Zip _____
 Phone Number _____

Note: The above boxed in area shall be filled out by the Contractor after the award of the contract to obtain the required NPDES Permit from IEPA. This is a requirement for this contract.

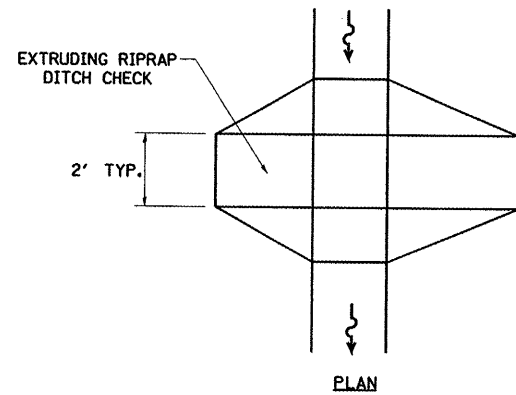
FILE NAME = C:\Projects\672685\672685-shtrawppp.dgn	USER NAME = laughlinr1	DESIGNED -	REVISED - AUG 2007 JCN
SWPPLAN.DGN	PLOT SCALE = 48,0000' / IN.	DRAWN - CADD	REVISED -
	PLOT DATE = Apr-02-2008 03:21:36PM	CHECKED - JCN	REVISED -
		DATE - APRIL 5, 1999	REVISED -

**STATE OF ILLINOIS
DEPARTMENT OF TRANSPORTATION**

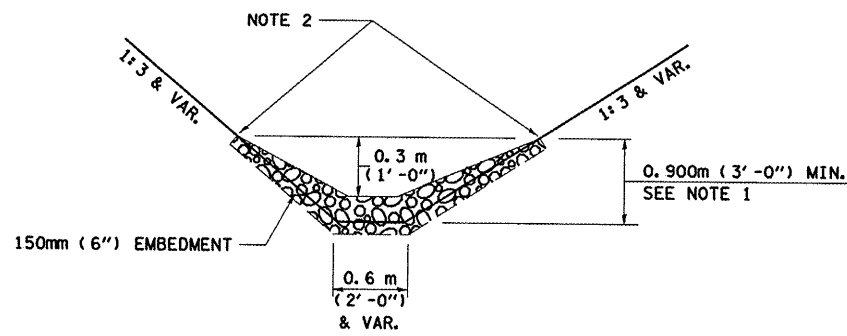
**STORM WATER POLLUTION
PREVENTION PLAN**

• D - 6 CABLE MEDIAN BAR #3

SCALE:	SHEET NO.	OF	SHEETS	STA.	TO STA.	F.A.I. RTE.	SECTION	COUNTY	TOTAL SHEETS	SHEET NO.
						55	*	SANGAMON	14	14C
						FED. ROAD DIST. NO.		ILLINOIS FED. AID PROJECT		
						CONTRACT NO. 72885				

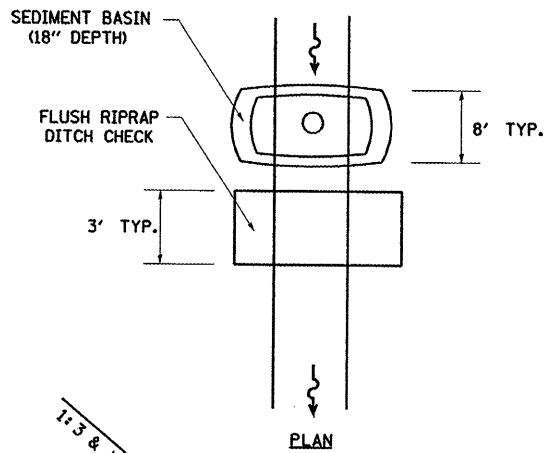


PLAN

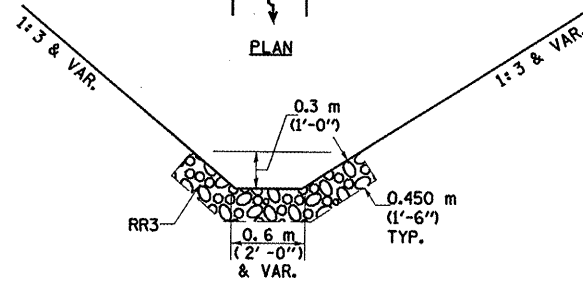


ELEVATION

OPTION 1
(EXTRUDING DITCH CHECK)
RECOMMENDED FOR AREAS
W/ RIPRAP DITCH LINING



PLAN



ELEVATION

OPTION 2
(FLUSH DITCH CHECK)
RECOMMENDED FOR AREAS
W/O RIPRAP DITCH LINING

STONE DUMPED RIPRAP DITCH CHECK
(TYPICAL & OPTIONS 1 & 2
AS DIRECTED BY THE ENGINEER)

NOTE 1: RIPRAP SHALL EXTEND FAR ENOUGH UP THE SLOPES TO ALLOW 0.3m (1') OVERTOPPING TO AVOID ERODING AROUND THE EDGES OF THE RIPRAP.

NOTE 2: ENDS SHALL BE TIED INTO SLOPES.

LEGEND FOR STORM WATER POLLUTION PREVENTION PLAN

ITEM	SYMBOL
AGGREGATE (EROSION CONTROL) [STONE DUMPED RIPRAP DITCH CHECKS: Height = 0.6m (2')]	
TEMPORARY DITCH CHECKS	
INLET PIPE PROTECTION (I&PP)	
EROSION CONTROL FENCE	
EARTH EXCAVATION FOR EROSION CONTROL (SEDIMENT BASINS)	
PRESERVE EXISTING TREES, WOODLANDS, AND UNDERSTORY (OUTSIDE CONSTRUCTION LIMITS)	
ITEM PLACED AT BEGINNING OF CONSTRUCTION (Requirement)	
ITEM PLACED AS DIRECTED BY ENGINEER (When required by situation)	
DIRECTION OF OVERLAND FLOW	

GENERAL NOTES:

All items shall be constructed as shown on this sheet, on Standard 280001, and as directed by the Engineer.

The symbology on the STORM WATER POLLUTION PREVENTION PLAN sheets does not represent the size or quantity of bales, for number of bales refer to details and notes shown on this sheet and/or as directed by the Engineer.

THE CONTRACTOR SHALL INSTALL DITCH CHECKS AS DIRECTED BY THE ENGINEER. IF THE ENGINEER ELECTS TO UTILIZE FLUSH RIPRAP DITCH CHECKS IN LIEU OF TEMPORARY DITCH CHECKS AS SHOWN ON THE FOLLOWING PLAN SHEETS, THE SPACING SHOULD BE DOUBLED.

FILE NAME = SWPPLAN.DGN	USER NAME = laughlin1	DESIGNED -	REVISED - AUG 2007 (JCN)
C:\Projects\4672b85\4672b85-sht-swppp.dgn		DRAWN - CADD	REVISED -
	PLOT SCALE = 40.0000' / IN.	CHECKED - JCN	REVISED -
	PLOT DATE = Apr-02-2008 03:21:38PM	DATE - APRIL 5, 1999	REVISED -

**STATE OF ILLINOIS
DEPARTMENT OF TRANSPORTATION**

**STORM WATER POLLUTION
PREVENTION PLAN**

SCALE: SHEET NO. OF SHEETS STA. TO STA.

• D - 6 CABLE MEDIAN BAR #3

F.A.I. RTE. 55	SECTION *	COUNTY SANGAMON	TOTAL SHEETS 14	SHEET NO. 140
FED. ROAD DIST. NO. ILLINOIS FED. AID PROJECT			CONTRACT NO. 72885	