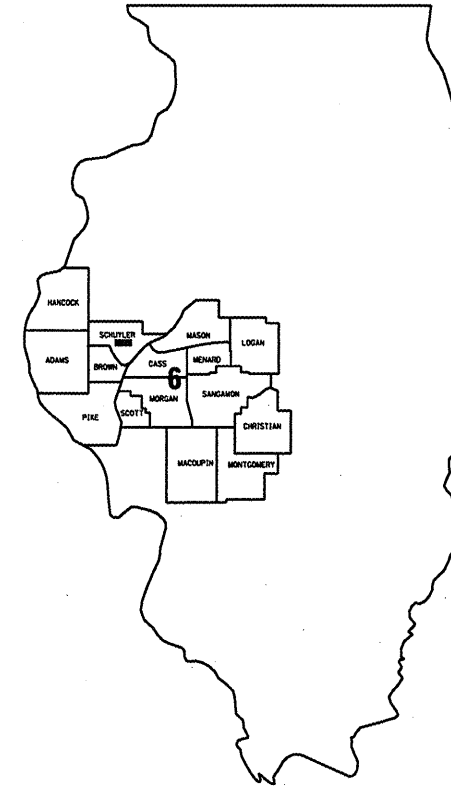


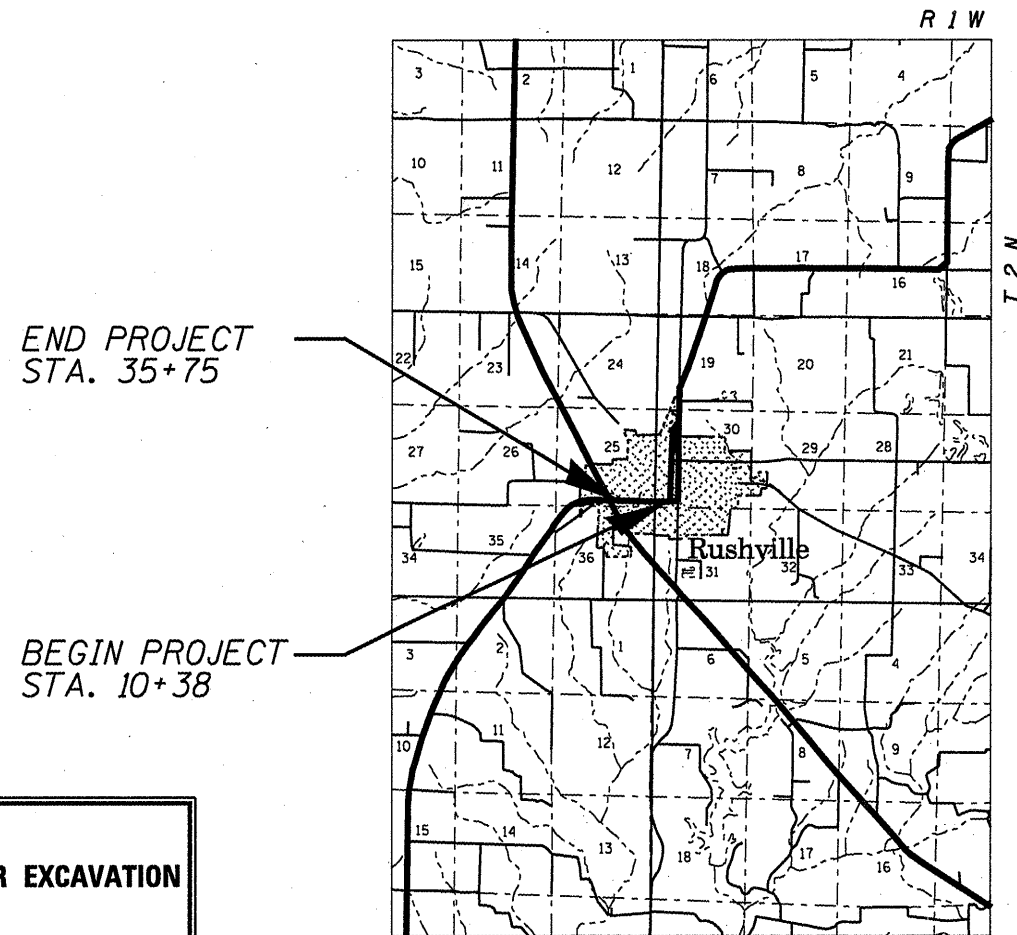
FOR INDEX OF SHEETS AND HIGHWAY
STANDARDS, SEE SHEET 2.

STATE OF ILLINOIS
DEPARTMENT OF TRANSPORTATION
DIVISION OF HIGHWAYS
**PLANS FOR PROPOSED
CONTRACT MAINTENANCE
FAP ROUTE 317 (US 24)
SECTION 11RS-3
SCHUYLER COUNTY
C96-050-08 / D96-050-08**

CONTRACT: 72B87
SHEET 1 OF 7



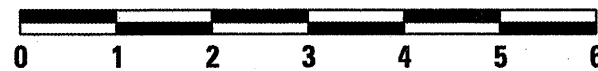
LOCATION OF SECTION INDICATED THUS: ■



J. U. L. I. E.
JOINT UTILITY LOCATION INFORMATION FOR EXCAVATION
1-800-892-0123

PLANS & CONTRACT TECHNICIAN: TIMOTHY SHARP
PHONE: (217) 782-7743

NET LTH OF SEC 2,537.00 FT = 0.480 MILE



SCALE: 1" = 2 MILES

STATE OF ILLINOIS
DEPARTMENT OF TRANSPORTATION
DIVISION OF HIGHWAYS

SUBMITTED Jun 28 20 08

Colin M. Fedun
DEPUTY DIRECTOR OF HIGHWAYS, REGION FOUR ENGINEER

May 9, 20 08
Eric E. Harm
Interim ENGINEER OF DESIGN AND ENVIRONMENT

May 9, 20 08
Christine M. Reed
DIRECTOR, DIVISION OF HIGHWAYS

CONTRACT NO. 72B87

PRINTED BY AUTHORITY OF THE STATE OF ILLINOIS

INDEX

- 1 COVER
- 2 INDEX/STANDARDS/SIGNATURES
- 3-4 QUANTITIES
- 5 TYPICAL SECTIONS
- 6 SCHEDULES
- 7 BUTT JOINT DETAILS

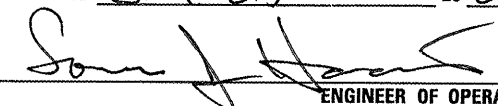
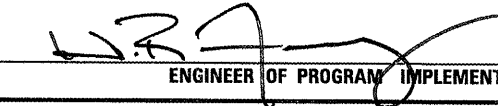

STANDARDS

- 442201-03
- 701001-01
- 701006-02
- 701011-01
- 701311-02
- 701501-04
- 701901
- 780001-01

NOTES:

SIZE AND LOCATION OF PATCHES TO BE DETERMINED IN THE FIELD BY THE RESIDENT ENGINEER.

NO PASSING ZONES TO BE FIELD VERIFIED BY THE BUREAU OF OPERATIONS. THE RESIDENT ENGINEER SHALL NOTIFY THE BUREAU OF OPERATIONS 14 DAYS PRIOR TO PERMANENT PAVEMENT MARKING.

STATE OF ILLINOIS DEPARTMENT OF TRANSPORTATION DIVISION OF HIGHWAYS DISTRICT 6	
EXAMINED	Jan 25 20 08  ENGINEER OF OPERATIONS
EXAMINED	Jan 15 20 08  ENGINEER OF PROGRAM IMPLEMENTATION
EXAMINED	Jan 23 20 08  ENGINEER OF PROGRAM DEVELOPMENT

INDEX/STANDARDS/SIGNATURES
FAP 317 (US 24)
SECTION 11RS-3
SCHUYLER COUNTY

S U M M A R Y O F Q U A N T I T I E S

CODE NO.	ITEM	UNIT	100% STATE
			1000
			TOTAL QTY
40600200	BITUMINOUS MATERIALS (PRIME COAT)	TON	3.2
40600300	AGGREGATE (PRIME COAT)	TON	16.9
40600990	TEMPORARY RAMP	SQ YD	45
40603335	HOT-MIX ASPHALT SURFACE COURSE, MIX'D; N50	TON	758
44000157	HOT-MIX ASPHALT SURFACE REMOVAL, 2"	SQ YD	8,457
44200140	PAVEMENT PATCHING, TYPE I, 12 INCH	SQ YD	35
44200144	PAVEMENT PATCHING, TYPE II, 12 INCH	SQ YD	45
44200148	PAVEMENT PATCHING, TYPE III, 12 INCH	SQ YD	40
48100100	AGGREGATE SHOULDERS, TYPE A	TON	82
67100100	MOBILIZATION	L SUM	1
70102620	TRAFFIC CONTROL AND PROTECTION, STANDARD 701501	L SUM	1
70300100	SHORT-TERM PAVEMENT MARKING	FOOT	508

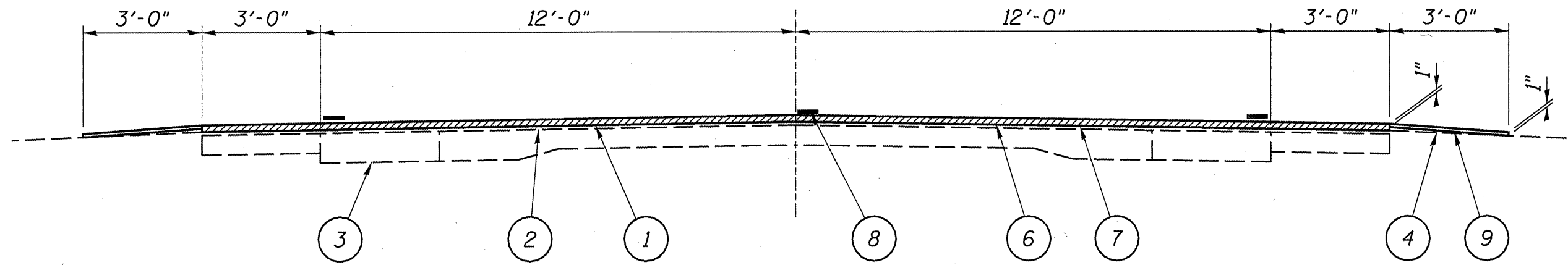
QUANTITIES
FAP 317 (US 24)
SECTION 11RS-3
SCHUYLER COUNTY

SUMMARY OF QUANTITIES

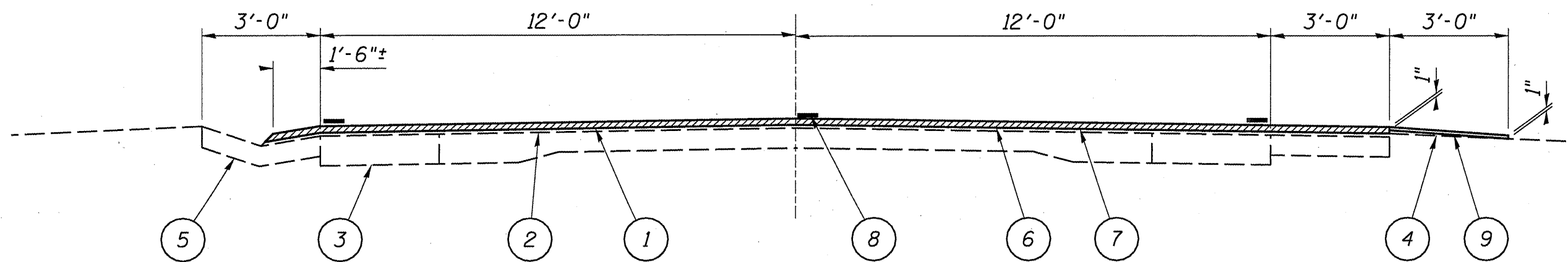
CODE NO.	ITEM	UNIT	100% STATE
			I000
			TOTAL QTY
70300230	TEMPORARY PAVEMENT MARKING - LINE 5"	FOOT	6,884
70300260	TEMPORARY PAVEMENT MARKING - LINE 12"	FOOT	90
70301000	WORK ZONE PAVEMENT MARKING REMOVAL	SQ FT	85
* 78001120	PAINT PAVEMENT MARKING - LINE 5"	FOOT	6,884
* 78001150	PAINT PAVEMENT MARKING - LINE 12"	FOOT	90
* 78100100	RAISED REFLECTIVE PAVEMENT MARKER	EACH	35
78300200	RAISED REFLECTIVE PAVEMENT MARKER REMOVAL	EACH	35

* SPECIALTY ITEMS

QUANTITIES
FAP 317 (US 24)
SECTION 11RS-3
SCHUYLER COUNTY



STA. 10+38 TO 22+35
STA. 26+00 TO 35+75



STA. 22+35 TO 26+00

LEGEND

- 1 - EXIST. P.C.C. PAVEMENT
- 2 - EXIST. H.M.A. SURFACE
- 3 - EXIST. H.M.A. WIDENING
- 4 - EXIST. AGG. SHOULDER
- 5 - EXIST. CONC. GUTTER
- 6 - PROP. H.M.A. SURFACE COURSE, MIX D, N50 2"
- 7 - PROP. H.M.A. SURFACE REMOVAL 2"
- 8 - PROP. PAINT PAVEMENT MARKING - LINE 5"
- 9 - PROP. AGG. SHOULDER, TYPE A

TYPICALS
FAP 317 (US 24)
SECTION 11RS-3
SCHUYLER COUNTY

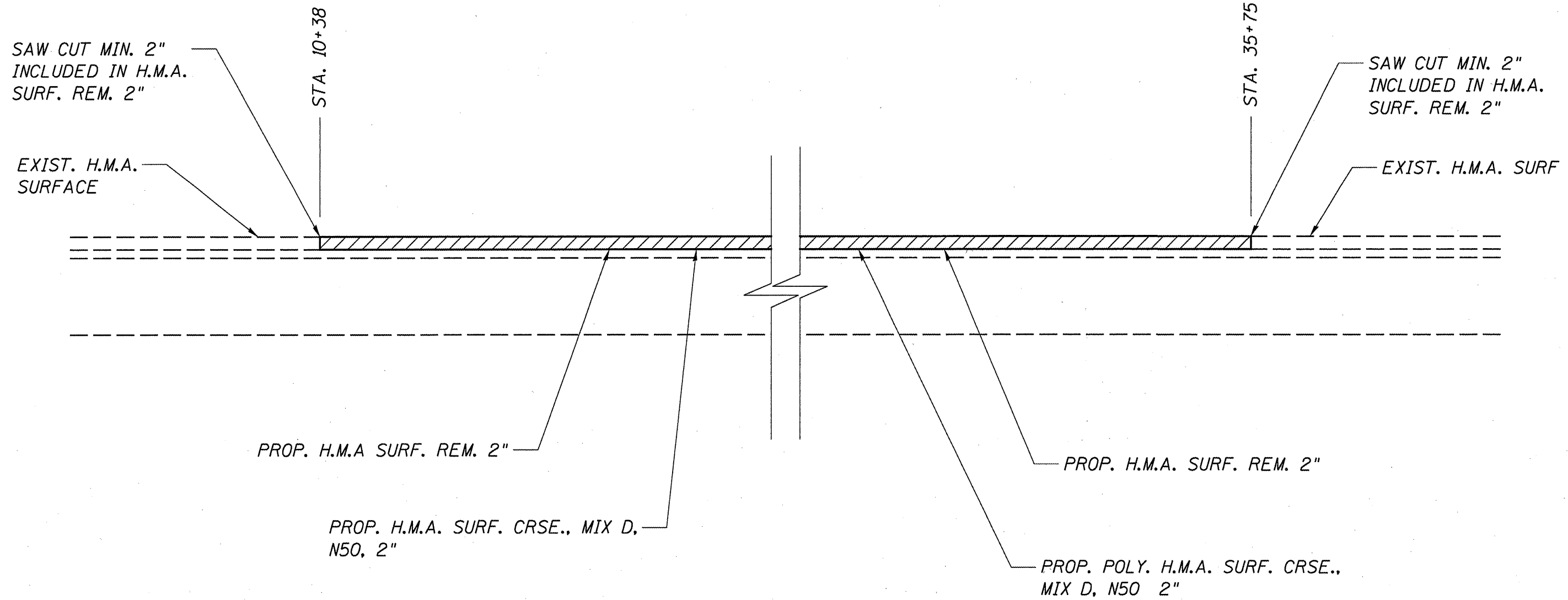
PAVEMENT MARKING SCHEDULE				
STATION	TYPE	PAINT PAVEMENT MARKING		
		LINE 5"		LINE 12"
		WHITE	YELLOW	WHITE
LOCATION #1				
LT & RT 10+38 TO 35+75	EDGE LINE	5,074 FT		
LT & RT 10+38 TO 11+38	NO PASS		200 FT	
11+38 TO 25+75	SKIP DASH		360 FT	
LT 25+75 TO 35+75	NO PASS		1,000 FT	
RT 25+75 TO 35+75	SKIP DASH		250 FT	
TOTALS		5,074 T	1,810 FT	90 FT

NOTES:

STATIONS ARE APPROXIMATE.

MIXTURE REQUIREMENTS	
THE FOLLOWING MIXTURE REQUIREMENTS ARE APPLICABLE FOR THIS PROJECT	
MIXTURE USE(S):	H.M.A. S.C., MIX D, N50
AC/PG	PG 64-22
DESIGN AIR VOIDS:	4.0% @ N DESIGN = 50
MIXTURE COMP:	IL 9.5 OR 12.5
FRICTION AGG:	MIX "D"

SCHEDULES
FAP 317 (US 24)
SECTION 11RS-3
SCHUYLER COUNTY



BUTT JOINT
FAP 317 (US 24)
SECTION 11RS-3
SCHUYLER COUNTY