

F.A.I. RTE.	SECTION	COUNTY	TOTAL SHEETS	SHEET NO.
72, 155		VARIOUS	9	1

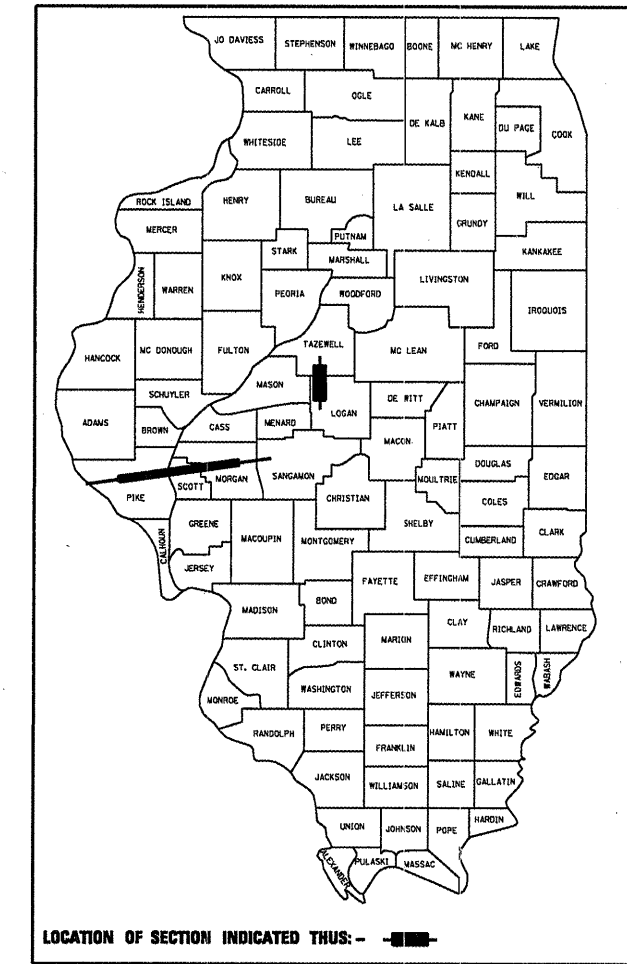
• - D6 GUARDRAIL IMPROVEMENT 2008  
 •• - LOGAN, MORGAN, PIKE, AND SCOTT COUNTIES

STATE OF ILLINOIS  
 DEPARTMENT OF TRANSPORTATION  
 DIVISION OF HIGHWAYS

**PROPOSED  
 HIGHWAY PLANS**

F.A.I. ROUTE 72 & F.A.I. ROUTE 155  
 SECTION D6 GUARDRAIL IMPROVEMENT 2008  
 PROJECT: ACHSIP-000S(590)

D-96-057-08

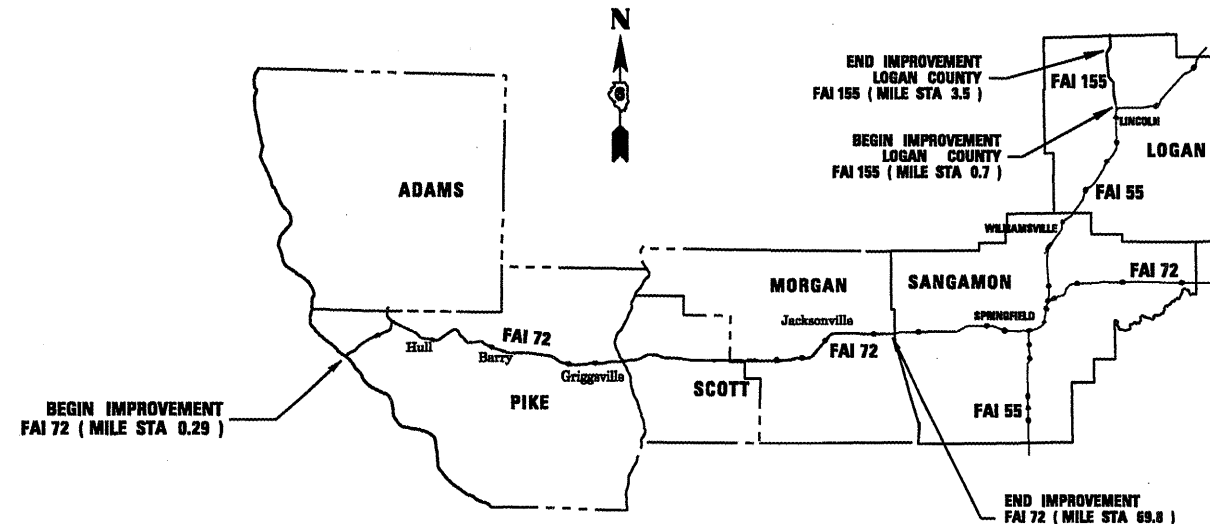


**INDEX OF SHEETS**

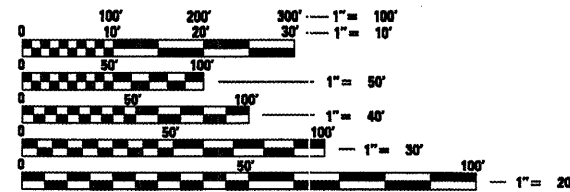
- 1. COVER SHEET
- 2. GENERAL NOTES
- 3. SUMMARY OF QUANTITIES
- 4-5. SCHEDULES
- 6-9. DETAILS

FOR LIST OF STANDARDS, SEE SHEET NO. 2

VARIOUS  
 COUNTIES  
 C-96-057-08



PROJECT LENGTH (I-72) = 69.51 MILES  
 PROJECT LENGTH (I-155) = 2.8 MILES  
 NET PROJECT LENGTH = 72.31 MILES



FULL SIZE PLANS HAVE BEEN PREPARED USING STANDARD ENGINEERING SCALES. REDUCED SIZED PLANS WILL NOT CONFORM TO STANDARD SCALES. IN MAKING MEASUREMENTS ON REDUCED PLANS, THE ABOVE SCALES MAY BE USED.

J.U.L.I.E.  
 JOINT UTILITY LOCATION INFORMATION FOR EXCAVATION  
 1-800-892-0123

CONTRACT NO. 72B93

STATE OF ILLINOIS  
 DEPARTMENT OF TRANSPORTATION  
 DIVISION OF HIGHWAYS

SUBMITTED MAR 13 2008  
*Cliff M. Reed*  
 DEPUTY DIRECTOR OF HIGHWAYS, REGION ENGINEER

MAY 9 2008  
*Chris E. Harn*  
 INTERIM ENGINEER OF DESIGN AND ENVIRONMENT

MAY 9 2008  
*Christie M. Reed*  
 DIRECTOR OF HIGHWAYS, CHIEF ENGINEER

PRINTED BY THE AUTHORITY  
 OF THE STATE OF ILLINOIS

F.A.I. RTE.	SECTION	COUNTY	TOTAL SHEETS	SHEET NO.
*	**	***	9	2
STA. _____		TO STA. _____		
FED. ROAD DIST. NO. _____		ILLINOIS FED. AID PROJECT		

- \* - 72, 155
- \*\* - D6 MEDIAN PROTECTION 2008
- \*\*\* - LOGAN, MORGAN, PIKE & SCOTT COUNTIES

INDEX OF SHEETS:

1. COVER SHEET
2. GENERAL NOTES
3. SUMMARY OF QUANTITIES
- 4-5. SCHEDULES
- 6-9. DETAILS

LIST OF STANDARDS:

630001-07	635011-01
630301-04	701101-01
631011-04	701106-01
631031-06	701400-02
635006-02	701406-04
	<u>701901</u>

Route \_\_\_\_\_  
 Section \_\_\_\_\_  
 County \_\_\_\_\_

GENERAL NOTES:

1. ANY REFERENCE TO THE STANDARDS THROUGHOUT THE PLANS SHALL BE INTERPRETED TO BE THE LATEST STANDARDS OF THE DEPARTMENT AS INCLUDED IN THE PLANS.
2. NO EXCAVATION IS ANTICIPATED ON THIS PROJECT WHICH WOULD AFFECT UTILITIES. SHOULD NOTIFICATION BE NECESSARY, THE CONTRACTOR IS RESPONSIBLE FOR CONTACTING J.U.L.I.E. A MINIMUM OF 48 HOURS PRIOR TO COMMENCING WORK - (800) 892-0123.
3. THE CONTRACTOR WILL BE REQUIRED TO CONTACT THE OPERATIONS ENGINEER (217) 782-7314 AT LEAST 72 HOURS PRIOR TO DRIVING ANY POSTS. TO MAKE SURE STATE OWNED UTILITIES ARE NOT IN THE WAY.
4. THE CONTRACTOR WILL BE REQUIRED TO REPAIR ANY AREAS OF TURF THAT ARE DAMAGED DURING THE EXECUTION OF THIS CONTRACT. THIS WORK WILL NOT BE MEASURED FOR PAYMENT AND WILL BE CONSIDERED INCIDENTAL TO THE CONTRACT.
5. ALL GUARDRAIL SHALL HAVE A PRELIMINARY LAYOUT. GUARDRAIL POSTS SHALL BE ADJUSTED SO AS TO MISS ANY SHOULDER DRAINS, INLETS, PIPE CULVERTS, STORM SEWER OR ANY OTHER HAZARD THAT MAY INTERFERE WITH GUARDRAIL CONSTRUCTION.

EXAMINED	<u>FEB 27</u>	20 <u>08</u>
<u>W.R.J.</u>		
PROGRAM IMPLEMENTATION ENGINEER		
EXAMINED	<u>MARCH 13</u>	20 <u>08</u>
<u>W.R.J.</u>		
PROGRAM DEVELOPMENT ENGINEER		

DISTRICT SIX		
EXAMINED	<u>March 3</u>	20 <u>08</u>
<u>James J. Hoar</u>		
OPERATIONS ENGINEER		

REVISIONS	
NAME	DATE

ILLINOIS DEPARTMENT OF TRANSPORTATION  
 GENERAL NOTES  
 FAI 72 & FAI 155  
 SECTION D6 MEDIAN PROTECTION 2008  
 LOGAN, MORGAN, PIKE & SCOTT COUNTIES

Rev.



F.A.I. RTE.	SECTION	COUNTY	TOTAL SHEETS	SHEET NO.
*	**	***	9	4
STA. TO STA.				
FED. ROAD DIST. NO. ILLINOIS FED. AID PROJECT				

\* - 72, 155  
 \*\* - D6 MEDIAN PROTECTION 2008  
 \*\*\* - LOGAN, MORGAN, PIKE & SCOTT COUNTIES

SCHEDULE FOR SAFETY IMPROVEMENTS

GENERAL LOCATION	DESCRIPTION OF HAZARD	STA OF HAZARD	PROPOSED IMPROVEMENT SEE DETAIL	GUARDRAIL REMOVAL	TRAFFIC BARRIER TERMINAL REMOVAL	SPBGR TYPE A	GUARDRAIL REFLECTORS	TRAFFIC BARRIER TERMINAL TYPE 1, SPL (TANGENT)	TERMINAL MARKER - DIRECT APPLIED	TRAFFIC BARRIER TERMINAL TYPE 2	TRAFFIC BARRIER TERMINAL TYPE 6 SPECIAL	
		(MILE STA)	(A, B, OR C)	(FOOT)	(EACH)	(FOOT)	(EACH)	(EACH)	(EACH)	(EACH)	(EACH)	(EACH)
I-72 PIKE COUNTY												
(6S075I072R002.9)	SIMPLE SPAN SIGN TRUSS (EB MED.)	2.9	--	--	1.0	--	--	1.0	1.0	--	--	
(6S075I072R003.5)	SIMPLE SPAN SIGN TRUSS (EB MED.)	3.5	--	--	1.0	--	--	1.0	1.0	--	--	
SN 075-0130	WB OUTSIDE SHOULDER	4.4	--	--	1.0	--	--	1.0	1.0	--	--	
SN 075-0130	WB MEDIAN SHOULDER	4.4	--	--	1.0	--	--	1.0	1.0	--	--	
SN 075-0131	EB OUTSIDE SHOULDER	*	--	--	1.0	--	--	1.0	1.0	--	--	
(6S075I072L004.9)	SIMPLE SPAN SIGN TRUSS (WB MED.)	4.9	--	--	1.0	--	--	1.0	1.0	--	--	
(6S075I072L004.9)	SIMPLE SPAN SIGN TRUSS (EB MED.)	4.9	B	--	--	212.5	4.0	1.0	1.0	1.0	--	
SN 075-0182	EB OUTSIDE SHOULDER	5.0	--	--	1.0	--	--	1.0	1.0	--	--	
SN 075-0182	EB MEDIAN SHOULDER	5.0	--	--	1.0	--	--	1.0	1.0	--	--	
SN 075-0181	WB OUTSIDE SHOULDER	5.1	--	--	1.0	--	--	1.0	1.0	--	--	
SN 075-0181	WB MEDIAN SHOULDER	5.1	--	--	1.0	--	--	1.0	1.0	--	--	
(6S075I072L005.3)	SIMPLE SPAN SIGN TRUSS (WB MED)	5.3	--	--	1.0	--	--	1.0	1.0	--	--	
(6S075I072L005.9)	SIMPLE SPAN SIGN TRUSS (EB MED)	5.9	B	--	--	200.0	4.0	1.0	1.0	1.0	--	
SN 075-0084	EB OUTSIDE SHOULDER	7.7	--	--	1.0	--	--	1.0	1.0	--	--	
SN 075-0084	EB MEDIAN SHOULDER	7.7	--	--	1.0	--	--	1.0	1.0	--	--	
SN 075-0085	WB OUTSIDE SHOULDER	7.8	--	--	1.0	--	--	1.0	1.0	--	--	
SN 075-0085	WB MEDIAN SHOULDER	7.8	--	--	1.0	--	--	1.0	1.0	--	--	
SN 075-0086	EB OUTSIDE SHOULDER	8.0	--	--	1.0	--	--	1.0	1.0	--	--	
SN 075-0086	EB MEDIAN SHOULDER	8.0	--	--	1.0	--	--	1.0	1.0	--	--	
SN 075-0087	WB OUTSIDE SHOULDER	8.1	--	--	1.0	--	--	1.0	1.0	--	--	
SN 075-0087	WB MEDIAN SHOULDER	8.1	--	--	1.0	--	--	1.0	1.0	--	--	
				I-72 PIKE COUNT	0.0	19.0	412.5	8.0	21.0	21.0	2.0	0.0

\* - LOCATED ON I-72 EB EXIT TO I-172 NB.

SCHEDULE FOR SAFETY IMPROVEMENTS

GENERAL LOCATION	DESCRIPTION OF HAZARD	STA OF HAZARD	PROPOSED IMPROVEMENT SEE DETAIL	GUARDRAIL REMOVAL	TRAFFIC BARRIER TERMINAL REMOVAL	SPBGR TYPE A	GUARDRAIL REFLECTORS	TRAFFIC BARRIER TERMINAL TYPE 1, SPL (TANGENT)	TERMINAL MARKER - DIRECT APPLIED	TRAFFIC BARRIER TERMINAL TYPE 2	TRAFFIC BARRIER TERMINAL TYPE 6 SPECIAL	
		(MILE STA)	(A, B, OR C)	(FOOT)	(EACH)	(FOOT)	(EACH)	(EACH)	(EACH)	(EACH)	(EACH)	(EACH)
I-72 SCOTT COUNTY												
SN 086-0041	WB MEDIAN SHOULDER	42.9	C	125.0	1.0	375.0	4.0	1.0	1.0	--	--	
SN 086-0037	EB MEDIAN SHOULDER	45.9	C	125.0	1.0	375.0	4.0	1.0	1.0	--	--	
SN 086-0038	WB MEDIAN SHOULDER	46.0	C	125.0	1.0	375.0	4.0	1.0	1.0	--	--	
BOX CULVERT	EB OUTSIDE SHOULDER	46.2	--	--	1.0	--	--	1.0	1.0	--	--	
SN 086-0033	EB MEDIAN SHOULDER	48.7	C	125.0	1.0	375.0	4.0	1.0	1.0	--	--	
SN 086-0032	WB OUTSIDE SHOULDER	48.8	--	--	1.0	--	--	1.0	1.0	--	--	
SN 086-0032	WB MEDIAN SHOULDER	48.8	C	112.5	1.0	375.0	4.0	1.0	1.0	--	--	
SN 086-0025	EB MEDIAN SHOULDER	53.5	C	125.0	1.0	337.5	4.0	1.0	1.0	--	--	
SN 086-0026	WB MEDIAN SHOULDER	53.6	C	112.5	1.0	337.5	4.0	1.0	1.0	--	1.0	
SN 086-0023	EB MEDIAN SHOULDER	55.2	C	125.0	1.0	325.0	4.0	1.0	1.0	--	1.0	
SN 086-0024	WB MEDIAN SHOULDER	55.3	C	112.5	1.0	325.0	4.0	1.0	1.0	--	1.0	
				I-72 SCOTT COUNTY SUB-TOTAL =	1087.5	11.0	3200.0	36.0	11.0	11.0	0.0	3.0

REVISIONS	
NAME	DATE

ILLINOIS DEPARTMENT OF TRANSPORTATION

SCHEDULE OF QUANTITIES

FAI 72 & FAI 155  
 SECTION D6 MEDIAN PROTECTION 2008  
 LOGAN, MORGAN, PIKE & SCOTT COUNTIES

F.A.I. RTE.	SECTION	COUNTY	TOTAL SHEETS	SHEET NO.
*	**	***	9	5
STA.		TO STA.		
FED. ROAD DIST. NO.		ILLINOIS FED. AID PROJECT		

\* - 72, 155  
 \*\* - D6 MEDIAN PROTECTION 2008  
 \*\*\* - LOGAN, MORGAN, PIKE & SCOTT COUNTIES

SCHEDULE FOR SAFETY IMPROVEMENTS											
GENERAL LOCATION	DESCRIPTION OF HAZARD	STA OF HAZARD	PROPOSED IMPROVEMENT SEE DETAIL	GUARDRAIL REMOVAL	TRAFFIC BARRIER TERMINAL REMOVAL	SPBGR TYPE A	GUARDRAIL REFLECTORS	TRAFFIC BARRIER TERMINAL TYPE 1, SPL (TANGENT)	TERMINAL MARKER - DIRECT APPLIED	TRAFFIC BARRIER TERMINAL TYPE 2	TRAFFIC BARRIER TERMINAL TYPE 6 SPECIAL
		( MILE STA)	( A, B, OR C)	( FOOT)	( EACH)	( FOOT)	( EACH)	( EACH)	( EACH)	( EACH)	( EACH)
I-72 MORGAN COUNTY											
SN 069-0056	EB MEDIAN SHOULDER	60.5	C	125.0	1.0	362.5	4.0	1.0	1.0	--	1.0
SN 069-0055	WB MEDIAN SHOULDER	60.6	C	125.0	1.0	362.5	4.0	1.0	1.0	--	1.0
SN 069-0058	EB MEDIAN SHOULDER	62.0	C	125.0	1.0	337.5	4.0	1.0	1.0	--	1.0
SN 069-0057	WB MEDIAN SHOULDER	62.1	C	125.0	1.0	337.5	4.0	1.0	1.0	--	1.0
SN 069-0035	EB MEDIAN SHOULDER	64.7	C	125.0	1.0	362.5	4.0	1.0	1.0	--	1.0
SN 069-0036	WB MEDIAN SHOULDER	64.8	C	125.0	1.0	362.5	4.0	1.0	1.0	--	1.0
SN 069-0038	EB MEDIAN SHOULDER	66.9	C	125.0	1.0	325.0	4.0	1.0	1.0	--	1.0
SN 069-0039	WB MEDIAN SHOULDER	67.0	C	125.0	1.0	325.0	4.0	1.0	1.0	--	1.0
SN 069-0040	EB MEDIAN SHOULDER	67.4	C	125.0	1.0	362.5	4.0	1.0	1.0	--	1.0
SN 069-0041	WB MEDIAN SHOULDER	67.5	C	125.0	1.0	362.5	4.0	1.0	1.0	--	1.0
SN 069-0042	EB MEDIAN SHOULDER	67.8	C	125.0	1.0	362.5	4.0	1.0	1.0	--	1.0
SN 069-0043	WB MEDIAN SHOULDER	67.9	C	125.0	1.0	362.5	4.0	1.0	1.0	--	1.0
SN 069-0048	EB MEDIAN SHOULDER	69.7	C	125.0	1.0	362.5	4.0	1.0	1.0	--	1.0
SN 069-0049	WB MEDIAN SHOULDER	69.8	C	125.0	1.0	375.0	4.0	1.0	1.0	--	1.0
I-72 MORGAN COUNTY SUB-TOTAL =				1750.0	14.0	4962.5	56.0	14.0	14.0	0.0	14.0

SCHEDULE FOR SAFETY IMPROVEMENTS											
GENERAL LOCATION	DESCRIPTION OF HAZARD	STA OF HAZARD	PROPOSED IMPROVEMENT SEE DETAIL	GUARDRAIL REMOVAL	TRAFFIC BARRIER TERMINAL REMOVAL	SPBGR TYPE A	GUARDRAIL REFLECTORS	TRAFFIC BARRIER TERMINAL TYPE 1, SPL (TANGENT)	TERMINAL MARKER - DIRECT APPLIED	TRAFFIC BARRIER TERMINAL TYPE 2	TRAFFIC BARRIER TERMINAL TYPE 6 SPECIAL
		( MILE STA)	( A, B, OR C)	( FOOT)	( EACH)	( FOOT)	( EACH)	( EACH)	( EACH)	( EACH)	( EACH)
I-155 LOGAN COUNTY											
(6S054I155L000.7)	SIMPLE SPAN SIGN TRUSS (SB MED.)	0.7	A	--	--	37.5	4.0	1.0	1.0	1.0	--
(6S054I155L001.9)	SIMPLE SPAN SIGN TRUSS (NB MED.)	1.9	A	--	--	212.5	4.0	1.0	1.0	1.0	--
SN 054-0073	NB MEDIAN SHOULDER	3.4	--	262.5	1.0	350.0	4.0	1.0	1.0	--	--
SN 054-0074	SB MEDIAN SHOULDER	3.5	--	275.0	1.0	350.0	4.0	1.0	1.0	--	--
I-155 LOGAN COUNTY SUB-TOTAL =				537.5	2.0	950.0	16.0	4.0	4.0	2.0	0.0

SUMMARY								
GENERAL LOCATION	GUARDRAIL REMOVAL	TRAFFIC BARRIER TERMINAL REMOVAL	SPBGR TYPE A	GUARDRAIL REFLECTORS	TRAFFIC BARRIER TERMINAL TYPE 1, SPL (TANGENT)	TERMINAL MARKER - DIRECT APPLIED	TRAFFIC BARRIER TERMINAL TYPE 2	TRAFFIC BARRIER TERMINAL TYPE 6 SPECIAL
	( FOOT)	( EACH)	( FOOT)	( EACH)	( EACH)	( EACH)	( EACH)	( EACH)
I-72 PIKE COUNTY SUB-TOTAL =	0.0	19.0	412.5	8.0	21.0	21.0	2.0	0.0
I-72 SCOTT COUNTY SUB-TOTAL =	1087.5	11.0	3200.0	36.0	11.0	11.0	0.0	3.0
I-72 MORGAN COUNTY SUB-TOTAL =	1750.0	14.0	4962.5	56.0	14.0	14.0	0.0	14.0
I-155 LOGAN COUNTY SUB-TOTAL =	537.5	2.0	950.0	16.0	4.0	4.0	2.0	0.0
TOTAL =	3375.0	46.0	9525.0	116.0	50.0	50.0	4.0	17.0

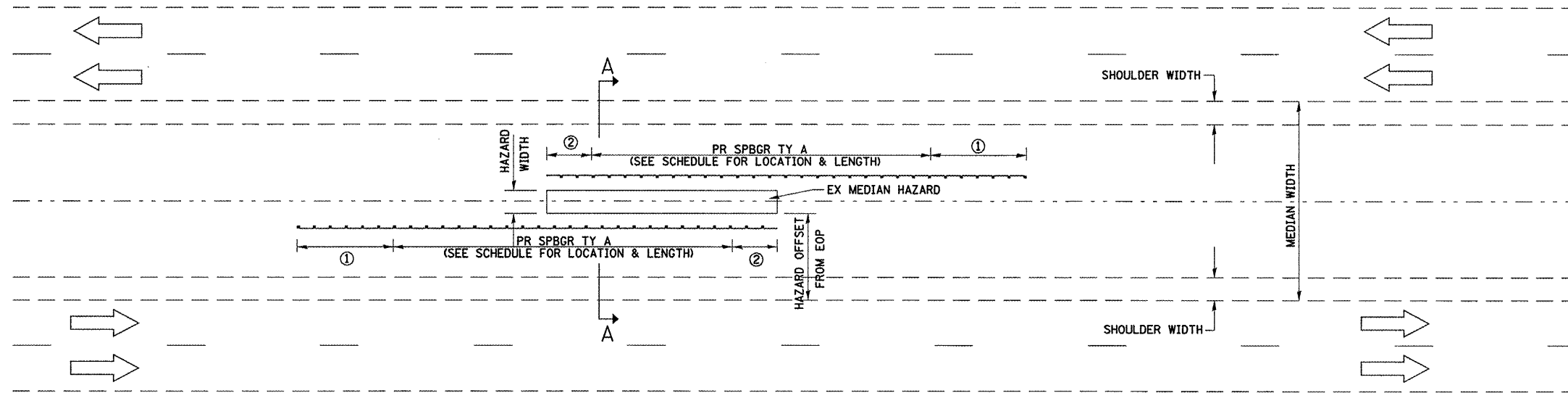
REVISIONS	
NAME	DATE

ILLINOIS DEPARTMENT OF TRANSPORTATION  
**SCHEDULE OF QUANTITIES**  
 FAI 72 & FAI 155  
 SECTION D6 MEDIAN PROTECTION 2008  
 LOGAN, MORGAN, PIKE & SCOTT COUNTIES

PLT DATE = Mar-14-2008 10:07:27 AM  
 FILE NAME = C:\p\proj\6054\672b93\shtr-schedule.dgn  
 PLOT SCALE = 1/8"=1'-0" / IN.  
 USER NAME = loganr1

F.A.I. RTE.	SECTION	COUNTY	TOTAL SHEETS	SHEET NO.
*	**	***	9	6
STA.		TO STA.		
FED. ROAD DIST. NO.	ILLINOIS	FED. AID PROJECT		

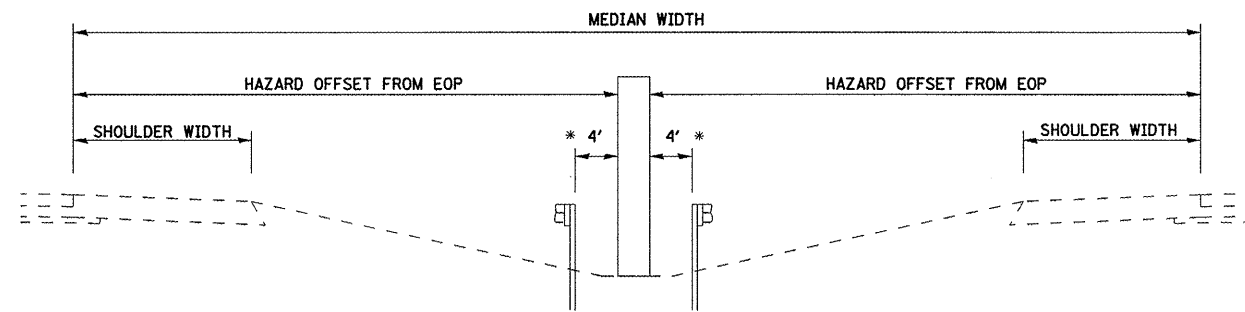
\* - 72, 155  
 \*\* - D6 MEDIAN PROTECTION 2008  
 \*\*\* - LOGAN, MORGAN, PIKE & SCOTT COUNTIES



**DETAIL "A"**

(PROPOSED PROTECTION OF  
 MEDIAN HAZARD WITH PROPOSED  
 GUARDRAIL)

- ① PR TRAFFIC BARRIER TERMINAL, TYPE 1, SPECIAL (TANGENT)
  - ② PR TRAFFIC BARRIER TERMINAL, TYPE 2
- NOTE: TYPE 2 TERMINATES AT END OF HAZARD



**SECTION A-A**  
 (TYPICAL CROSS SECTION)

\* AT SELECT LOCATIONS IDENTIFIED IN THE SCHEDULE OF QUANTITIES AS A \*, THE GUARDRAIL SHALL BE OFFSET 5' FROM THE PIER IN ORDER TO MISS CONFLICTING SPREAD FOOTINGS.

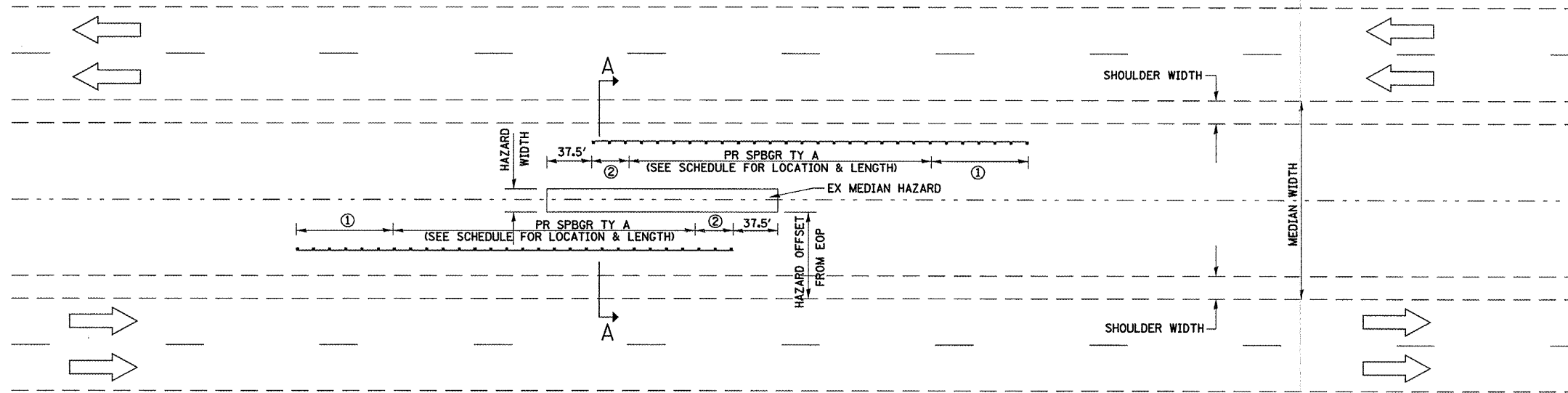
REVISIONS	
NAME	DATE

ILLINOIS DEPARTMENT OF TRANSPORTATION

**DETAIL "A"**  
 FAI 72 & FAI 155  
 SECTION D6 MEDIAN PROTECTION 2008  
 LOGAN, MORGAN, PIKE & SCOTT COUNTIES

PLOT DATE = Nov-14-2008 10:07:29 AM  
 FILE NAME = C:\Projects\72893\872893.dwg  
 PLOT SCALE = 1/8" = 1'-0"  
 USER NAME = jmaguire

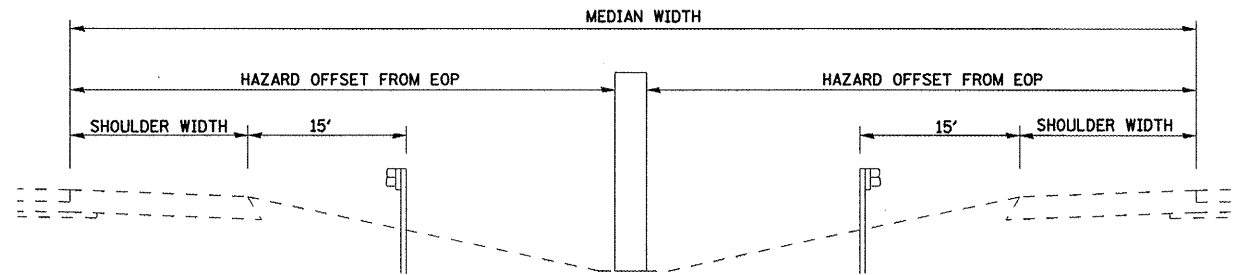
F.A.I. RTE.	SECTION	COUNTY	TOTAL SHEETS	SHEET NO.
*	**	***	9	7
STA.		TO STA.		
FED. ROAD DIST. NO.		ILLINOIS FED. AID PROJECT		
* - 72, 155				
** - D6 MEDIAN PROTECTION 2008				
*** - LOGAN, MORGAN, PIKE & SCOTT COUNTIES				



**DETAIL "B"**

(PROPOSED PROTECTION OF  
MEDIAN HAZARD WITH PROPOSED  
GUARDRAIL)

- ① PR TRAFFIC BARRIER TERMINAL, TYPE 1, SPECIAL (TANGENT)
- ② PR TRAFFIC BARRIER TERMINAL, TYPE 2  
NOTE: TYPE 2 TERMINATES 37.5 FT BEFORE END OF HAZARD



**SECTION A-A**  
(TYPICAL CROSS SECTION)

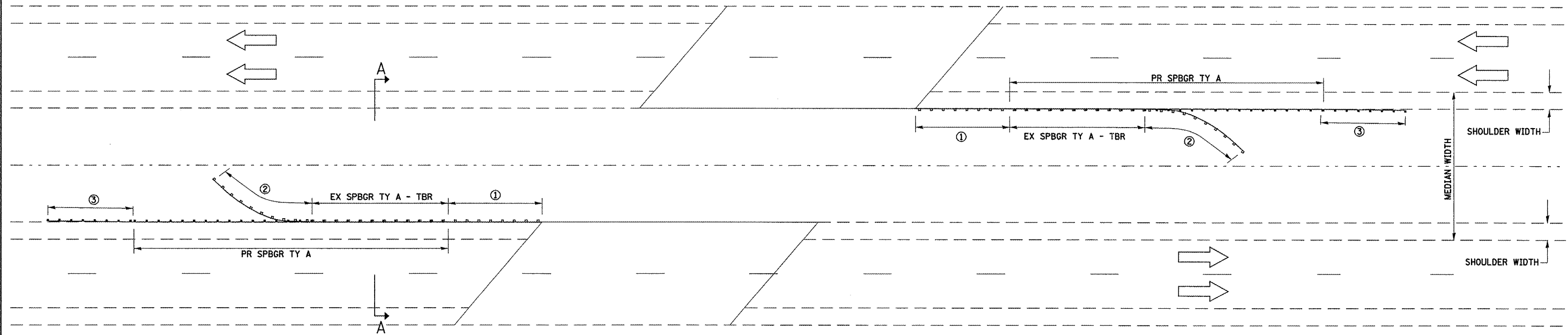
REVISIONS	
NAME	DATE

ILLINOIS DEPARTMENT OF TRANSPORTATION  
  
DETAIL "B"  
  
FAI 72 & FAI 155  
SECTION D6 MEDIAN PROTECTION 2008  
LOGAN, MORGAN, PIKE & SCOTT COUNTIES

PLOT DATE = Nov-14-2008 10:57:31AM  
FILE NAME = D:\Projects\72893\872893\872893-ahs-detail.dgn  
PLOT SCALE = 1/8" = 1'-0" / IN.  
USER NAME = laughlin-1

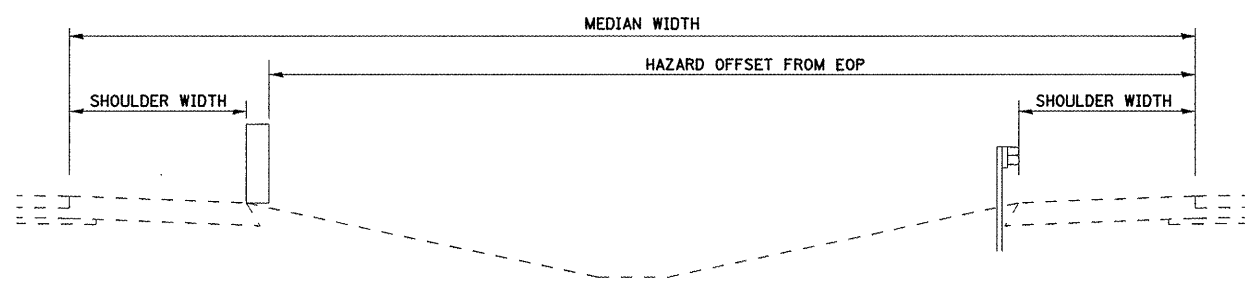
F.A.I. RTE.	SECTION	COUNTY	TOTAL SHEETS	SHEET NO.
*	**	***	9	8
STA. TO STA.				
FED. ROAD DIST. NO. ILLINOIS FED. AID PROJECT				

\* - 72, 155  
 \*\* - D6 MEDIAN PROTECTION 2008  
 \*\*\* - LOGAN, MORGAN, PIKE & SCOTT COUNTIES



**DETAIL "C"**  
 (PROPOSED PROTECTION OF AT GRADE HAZARD WITH PROPOSED GUARDRAIL IMPROVEMENT)

- ① EX TRAFFIC BARRIER TERMINAL, TYPE 6  
PR TRAFFIC BARRIER TERMINAL, TYPE 6, SPECIAL
- ② EX TRAFFIC BARRIER TERMINAL, TYPE 4 - TO BE REMOVED
- ③ PR TRAFFIC BARRIER TERMINAL, TYPE 1 - TANGENT



**SECTION A-A**  
 (TYPICAL CROSS SECTION)

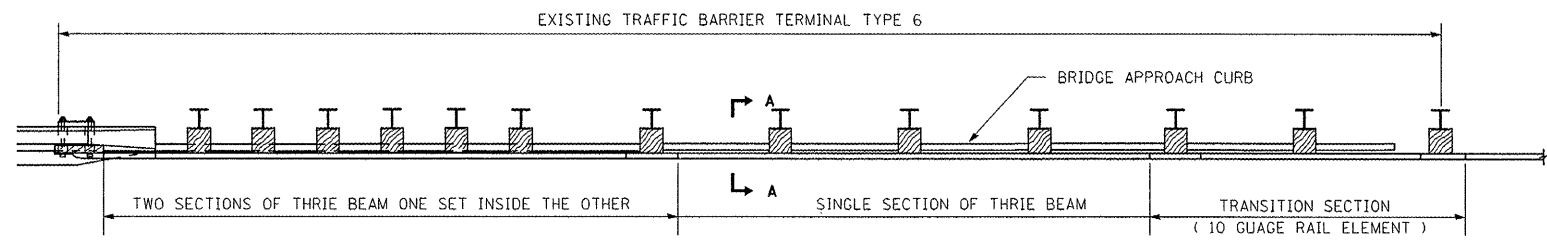
REVISIONS	
NAME	DATE

ILLINOIS DEPARTMENT OF TRANSPORTATION  
**DETAIL "C"**  
 FAI 72 & FAI 155  
 SECTION D6 MEDIAN PROTECTION 2008  
 LOGAN, MORGAN, PIKE & SCOTT COUNTIES

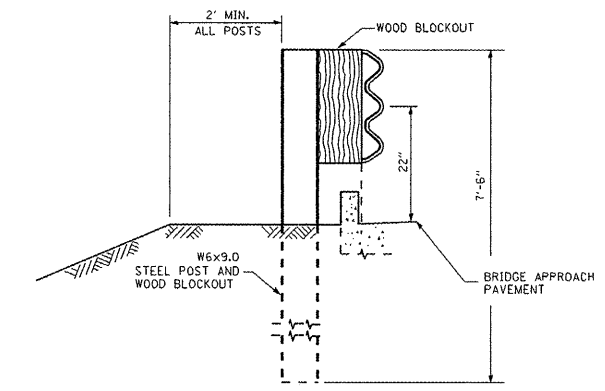
PLOT DATE = Nov-14-2008 10:07:33AM  
 FILE NAME = C:\p\work\672893\672893.dwg  
 PLOT SCALE = 1/8"=1'-0"  
 USER NAME = joughlin1



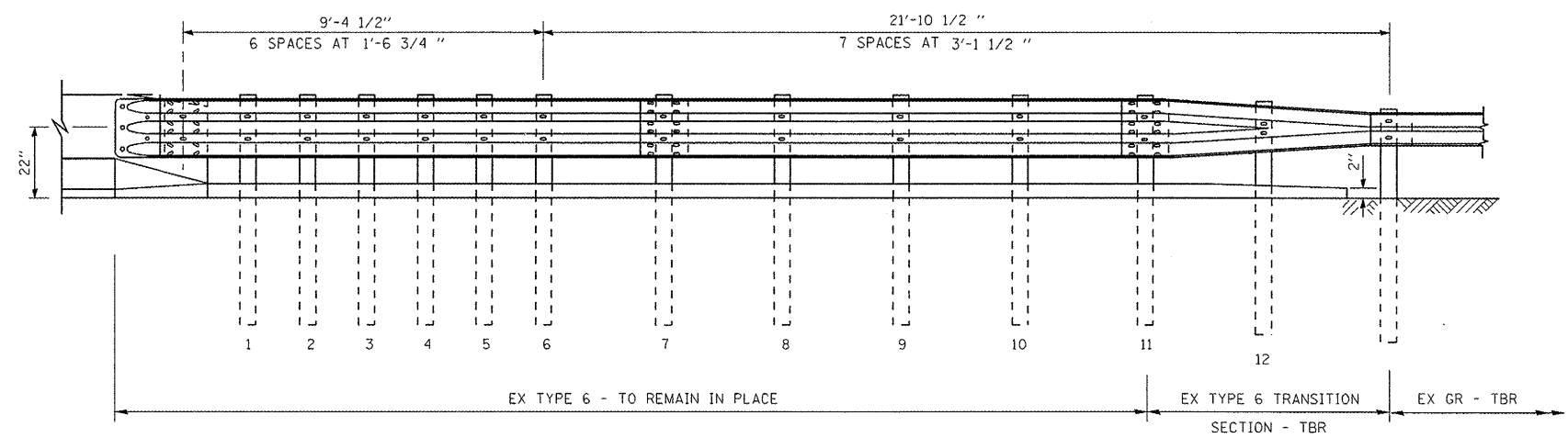
F.A.I. RTE.	SECTION	COUNTY	TOTAL SHEETS	SHEET NO.
*	**	***	9	9
STA. TO STA.				
FED. ROAD DIST. NO. ILLINOIS FED. AID PROJECT				
* - 72, 155				
** - D6 MEDIAN PROTECTION 2008				
*** - LOGAN, MORGAN, PIKE & SCOTT COUNTIES				



PLAN

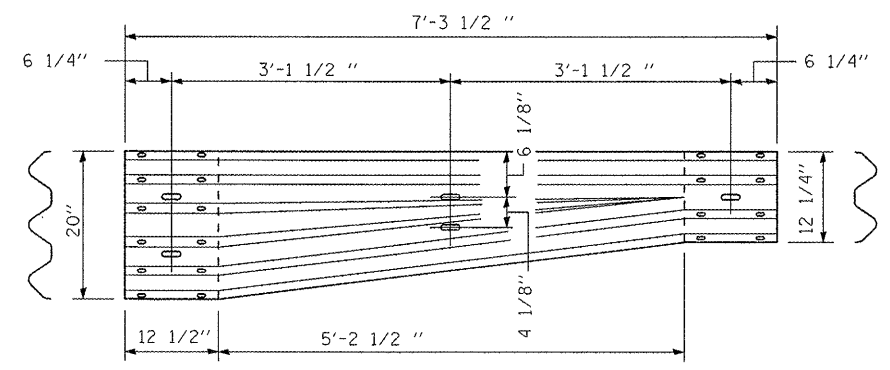


SECTION A-A

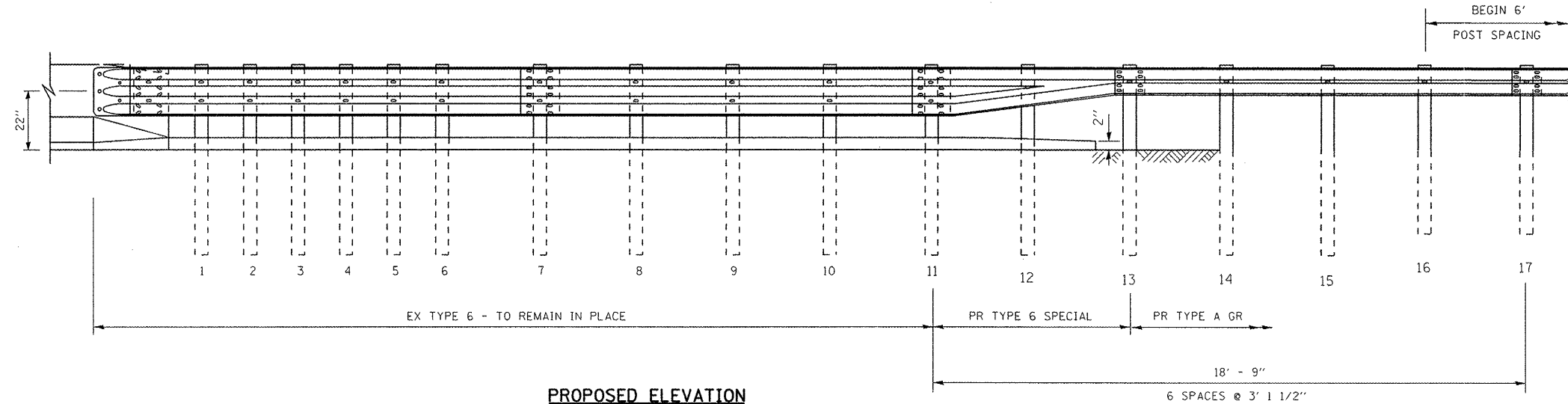


EXISTING ELEVATION

NOTE: POST 5 MISSING AT SOME LOCATIONS OF EXISTING TRAFFIC BARRIER TERMINAL TYPE 6. THIS POST SHALL BE INSTALLED ACCORDING TO STANDARD 631031-06 AND INCLUDED IN THE COST OF TRAFFIC BARRIER TERMINAL TYPE 6, SPECIAL.



PROPOSED TRANSITION SECTION



PROPOSED ELEVATION

NOTE: ADDITIONAL POSTS TO MAINTAIN 3' 1 1/2" SPACING TO BE INCLUDED IN THE COST OF TRAFFIC BARRIER TERMINAL TYPE 6, SPECIAL.

GENERAL NOTES

- SEE STANDARD 630001 AND 631031 FOR DETAILS OF GUARDRAIL NOT SHOWN.
- THRIE BEAM RAIL SHALL BE BOLTED TO BLOCK-OUT AT ALL POSTS.
- POSTS 11 THROUGH 15 SHALL BE 7' 6" IN LENGTH.

SHEET 2 OF 2

REVISIONS	
NAME	DATE

ILLINOIS DEPARTMENT OF TRANSPORTATION  
  
DETAIL "C"  
FAI 72 & FAI 155  
SECTION D6 MEDIAN PROTECTION 2008  
LOGAN, MORGAN, PIKE & SCOTT COUNTIES

PLOT DATE = Nov-14-2008 10:07:34AM  
 FILE NAME = C:\Projects\72B93\1872B93-shd-details.dgn  
 PLOT SCALE = 1/8"=1'-0" / IN.  
 USER NAME = joughlin1