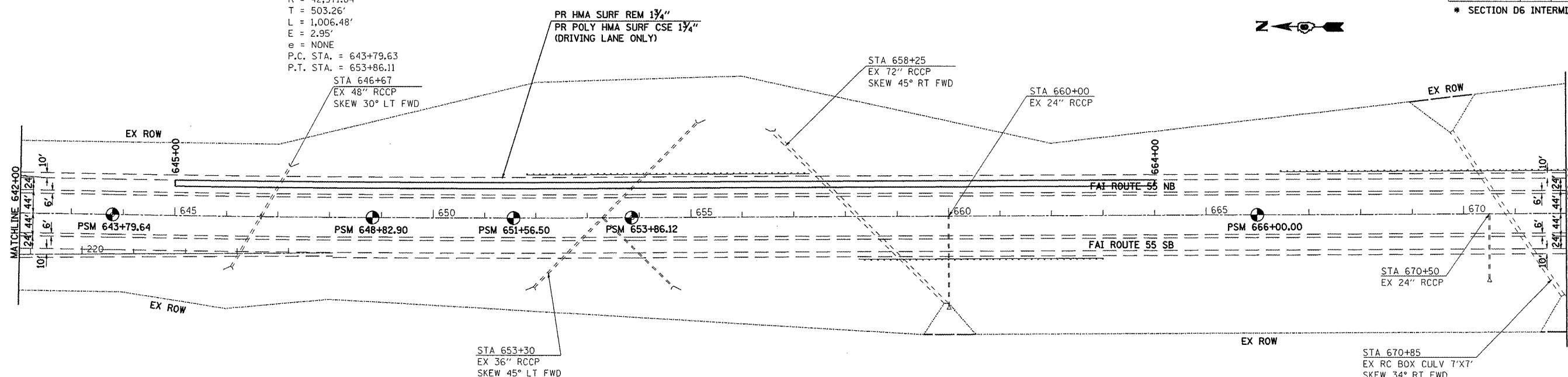


CONTRACT 72C03

F.A.I. RTE.	SECTION	COUNTY	TOTAL SHEETS	SHEET NO.
55	*	MACOUPIN	18	12
STA. 642+00.00		TO STA. 702+00.00		
FED. ROAD DIST. NO.		ILLINOIS FED. AID PROJECT		
* SECTION D6 INTERMITTENT RS 2009				

SEC 10, T7N, R6W, 3RD PM

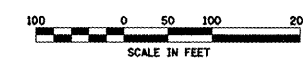
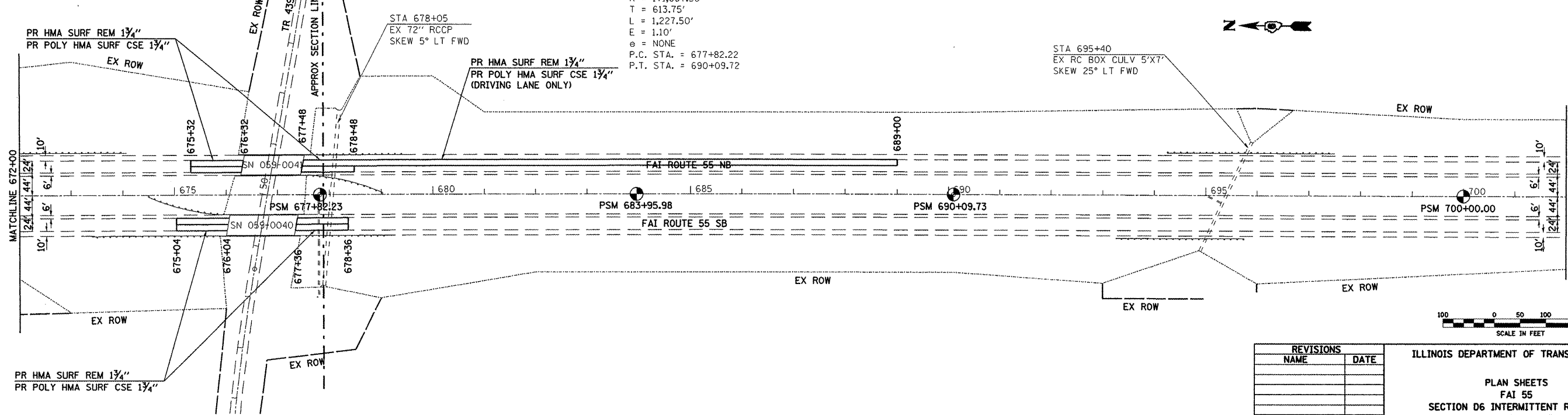
EXIST. CURVE 155N-3
 PI STA. = 648+82.89
 $\Delta = 1^\circ 20' 31''$ (LT)
 $D = 0^\circ 08' 00''$
 $R = 42,971.84'$
 $T = 503.26'$
 $L = 1,006.48'$
 $E = 2.95'$
 $e = \text{NONE}$
 P.C. STA. = 643+79.63
 P.T. STA. = 653+86.11



SEC 10, T7N, R6W, 3RD PM

SEC 15, T7N, R6W, 3RD PM

EXIST. CURVE 155N-4
 PI STA. = 683+95.97
 $\Delta = 0^\circ 24' 33''$ (RT)
 $D = 0^\circ 02' 00''$
 $R = 171,887.30'$
 $T = 613.75'$
 $L = 1,227.50'$
 $E = 1.10'$
 $e = \text{NONE}$
 P.C. STA. = 677+82.22
 P.T. STA. = 690+09.72



REVISIONS	
NAME	DATE

ILLINOIS DEPARTMENT OF TRANSPORTATION

PLAN SHEETS
 FAI 55
 SECTION D6 INTERMITTENT RS 2009
 MACOUPIN COUNTY

SCALE: _____
 DATE: _____

DRAWN BY _____
 CHECKED BY _____

C:\p\proj\sec15\672e02\shwrest100.dgn
 Apr-01-2008 07:35:05AM
 *REF:01