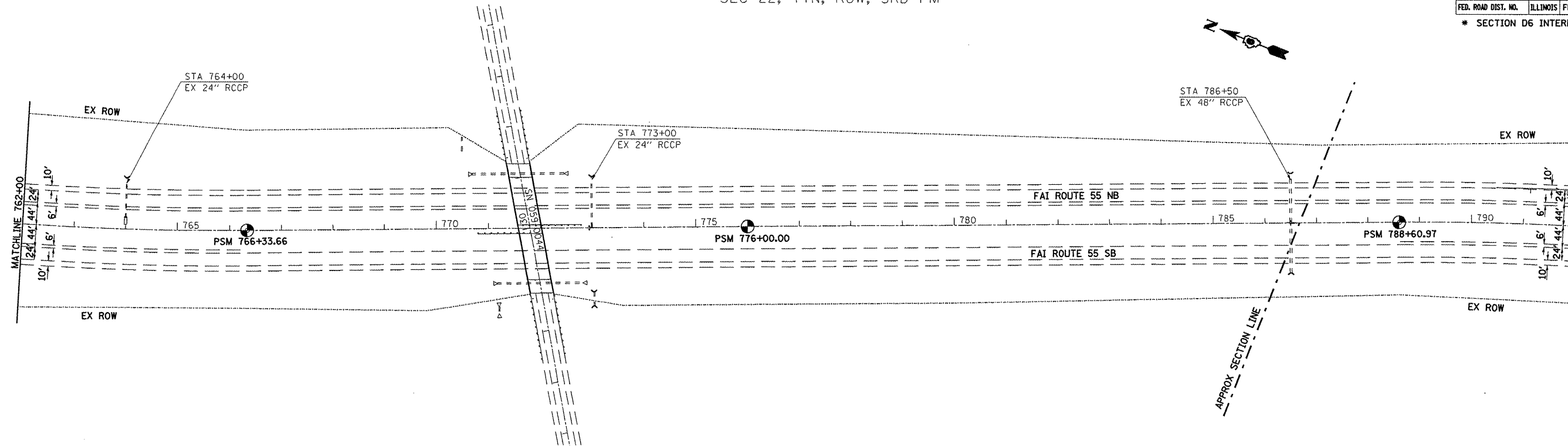
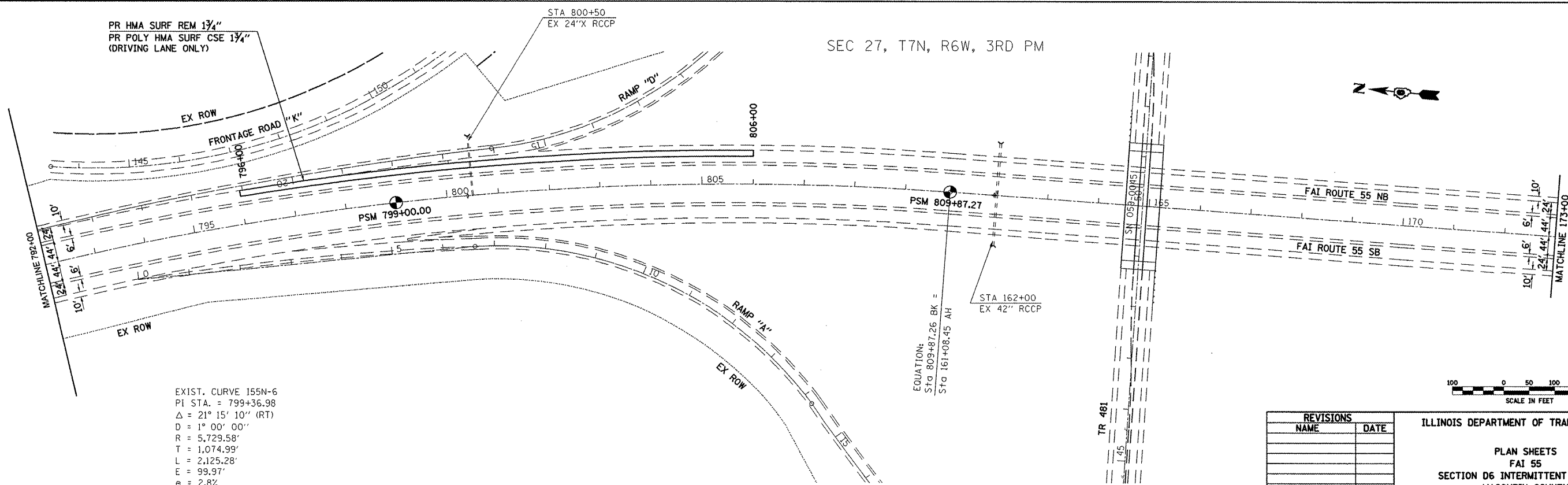


F.A.I. RTE.	SECTION	COUNTY	TOTAL SHEETS	SHEET NO.
55	*	MACOUPIN	18	14
STA. 762+00.00		TO STA. 173+00.00		
FED. ROAD DIST. NO. ILLINOIS FED. AID PROJECT				
* SECTION D6 INTERMITTENT RS 2009				

SEC 22, T7N, R6W, 3RD PM

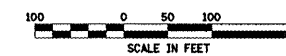


SEC 27, T7N, R6W, 3RD PM



EXIST. CURVE I55N-6
 PI STA. = 799+36.98
 $\Delta = 21^\circ 15' 10''$ (RT)
 $D = 1^\circ 00' 00''$
 $R = 5,729.58'$
 $T = 1,074.99'$
 $L = 2,125.28'$
 $E = 99.97'$
 $e = 2.8\%$
 P.C. STA. = 788+61.98
 P.T. STA. = 809+87.26

EQUATION:
 Sta 809+87.26 BK =
 Sta 161+08.45 AH



REVISIONS	
NAME	DATE

ILLINOIS DEPARTMENT OF TRANSPORTATION
 PLAN SHEETS
 FAI 55
 SECTION D6 INTERMITTENT RS 2009
 MACOUPIN COUNTY

SCALE: _____ DRAWN BY _____
 DATE: _____ CHECKED BY _____