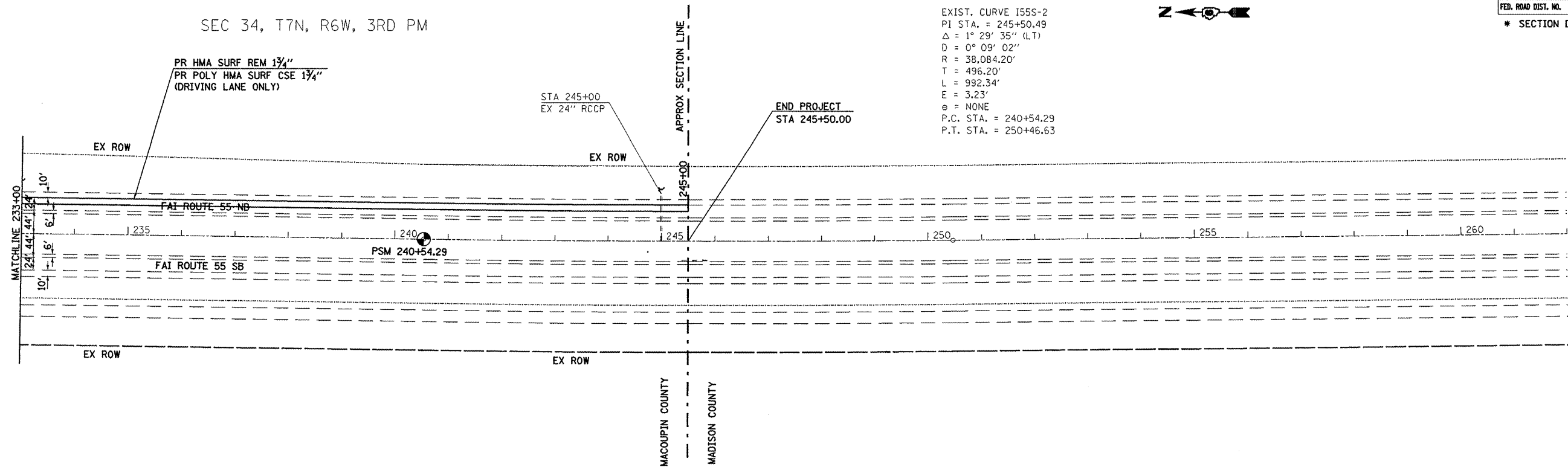


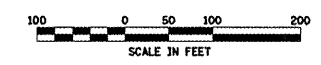
CONTRACT 72C03

F.A.I. RTE.	SECTION	COUNTY	TOTAL SHEETS	SHEET NO.
55	*	MACOUPIN	18	16
STA. 233+00.00		TO STA. 262+00		
FED. ROAD DIST. NO.		ILLINOIS FED. AID PROJECT		
* SECTION D6 INTERMITTENT RS 2009				

SEC 34, T7N, R6W, 3RD PM



EXIST. CURVE 155S-2
 PI STA. = 245+50.49
 $\Delta = 1^\circ 29' 35''$ (LT)
 $D = 0^\circ 09' 02''$
 $R = 38,084.20'$
 $T = 496.20'$
 $L = 992.34'$
 $E = 3.23'$
 $e = \text{NONE}$
 P.C. STA. = 240+54.29
 P.T. STA. = 250+46.63



REVISIONS	
NAME	DATE

ILLINOIS DEPARTMENT OF TRANSPORTATION

PLAN SHEETS
 FAI 55
 SECTION D6 INTERMITTENT RS 2009
 MACOUPIN COUNTY

SCALE: _____ DRAWN BY _____
 DATE: _____ CHECKED BY _____

C:\Projects\6672c03\sheet16.dgn
 Apr-01-2008 07:36:20AM
 *REF:01