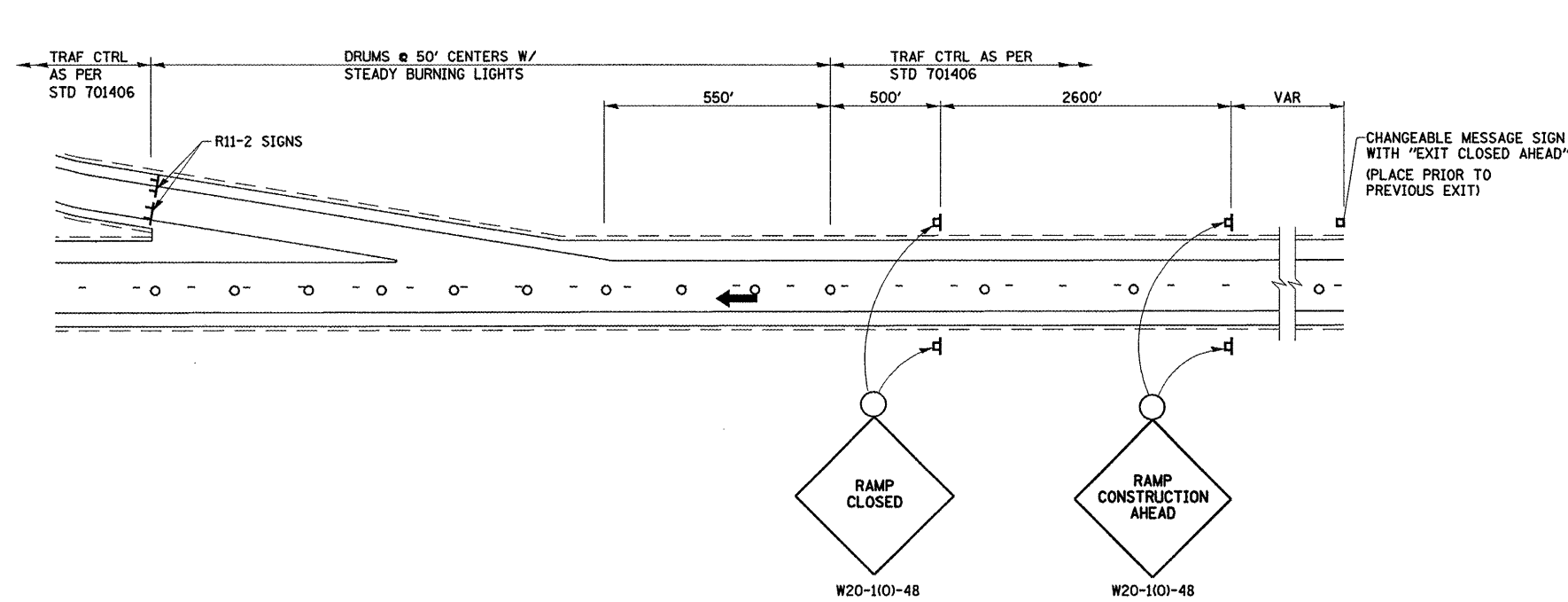
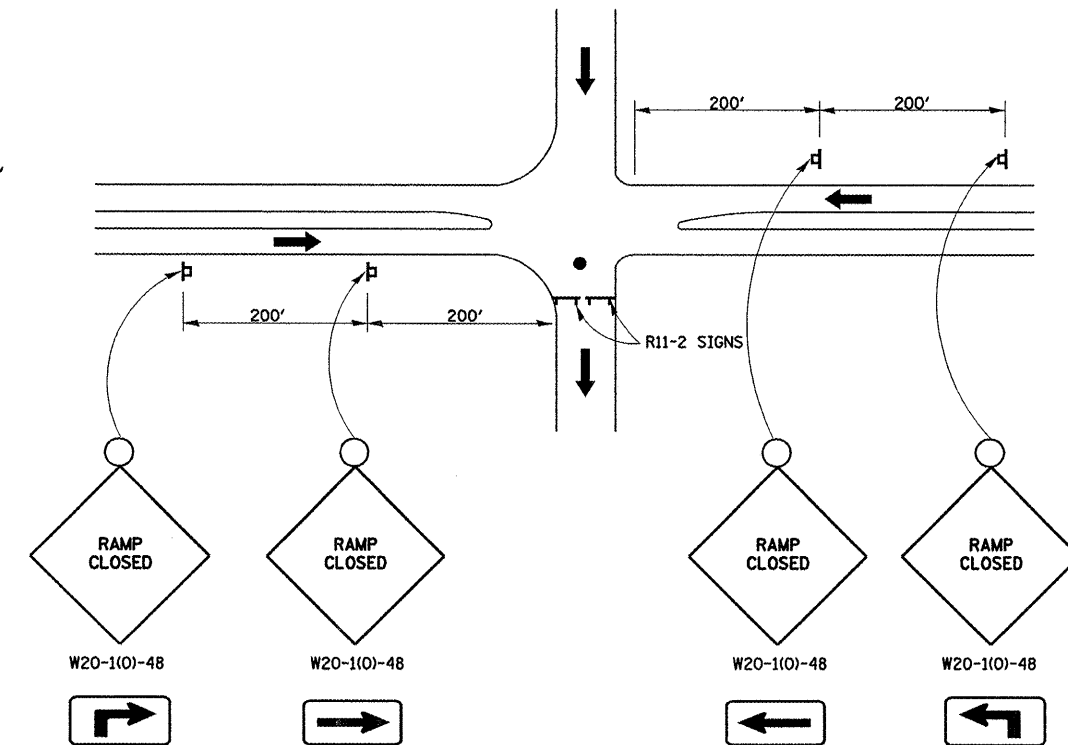


F.A.I. RTE.	SECTION	COUNTY	TOTAL SHEETS	SHEET NO.
55	*	SANGAMON	18	18
STA.		TO STA.		
FED. ROAD DIST. NO.	ILLINOIS	FED. AID PROJECT		

• D6 INTERMITTENT RS 2009



EXIT RAMP CLOSURE DETAIL



ENTRANCE RAMP CLOSURE DETAIL

SYMBOLS

- ▣ SIGN ON PORTABLE OR PERMANENT SUPPORT
- ⌄ TYPE 3 BARRICADE
- CONE, DRUM, OR BARRICADE
- FLAGGER WITH TRAFFIC CONTROL SIGN
- ➔ TRAFFIC FLOW

NOTES

THIS DETAIL IS TO BE USED IN CONJUNCTION WITH STANDARDS 701406 AND 701400.

REVISIONS	
NAME	DATE

ILLINOIS DEPARTMENT OF TRANSPORTATION
TRAFFIC CONTROL & PROTECTION FOR RAMPS
 FAI 55 (I-55)
 SECTION D6 INTERMITTENT RS 2009
 MACOUPIN COUNTY

SCALE: _____ DRAWN BY _____
 DATE _____ CHECKED BY _____

PLOT DATE = 04-01-2009 07:56:44AM
 FILE NAME = C:\p\projects\672626\1\trfctrl\trfctrl.dgn
 PLOT SCALE = 1/8"=1'-0"
 USER NAME = baughman1