

F.A.I. RTE.	SECTION	COUNTY	TOTAL SHEETS	SHEET NO.
55		MACOUPIN	18	1

D6 INTERMITTENT RS 2009

D-96-070-08

STATE OF ILLINOIS
DEPARTMENT OF TRANSPORTATION
DIVISION OF HIGHWAYS

**PROPOSED
HIGHWAY PLANS**

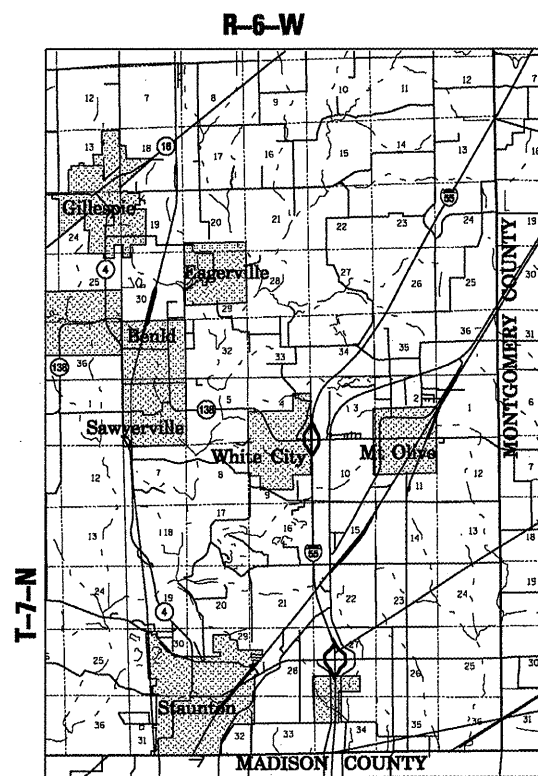
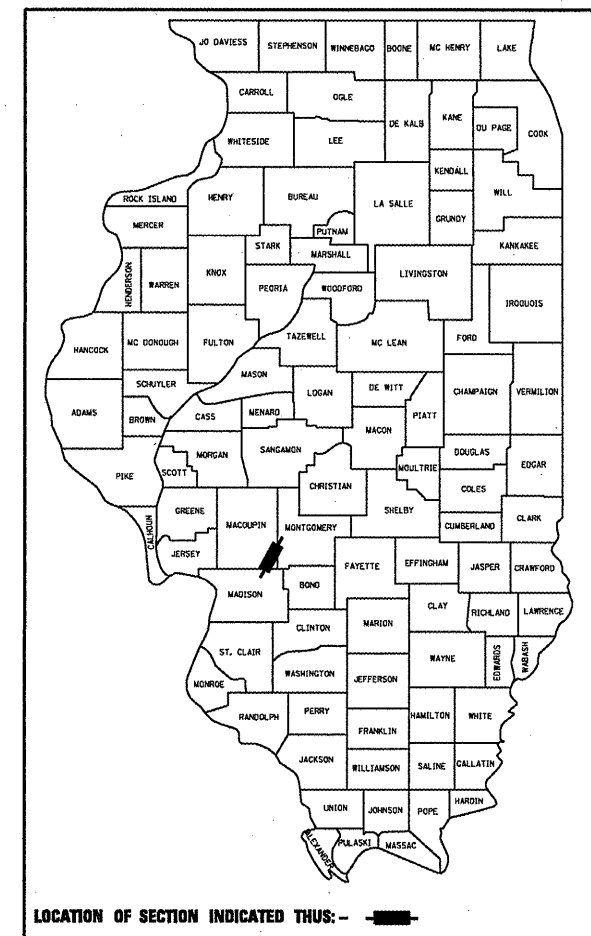
FAI ROUTE 55
SECTION D6 INTERMITTENT RS 2009
MACOUPIN COUNTY
C-96-070-08

INDEX OF SHEETS

- 1 COVER SHEET
- 2 GENERAL NOTES
- 3 SUMMARY OF QUANTITIES
- 4 TYPICAL SECTIONS
- 5 SCHEDULES OF QUANTITIES
- 6-16 PLAN SHEETS
- 17 BUTT JOINT DETAIL
- 18 TRAFFIC CONTROL AND PROTECTION FOR RAMP

HIGHWAY STANDARDS

- 000001-05
- 701101-01
- 701400-02
- 701406-04
- 701411-04
- 701426-02
- 701901
- 780001-01
- 781001-02



PROJECT BEGINS
STA 300+00.00

STA EQUATION
STA 809+87.27 BK =
STA 161+08.45 AH

PROJECT ENDS
STA 245+50.00

ADT: 25,584

STATE OF ILLINOIS
DEPARTMENT OF TRANSPORTATION
DIVISION OF HIGHWAYS

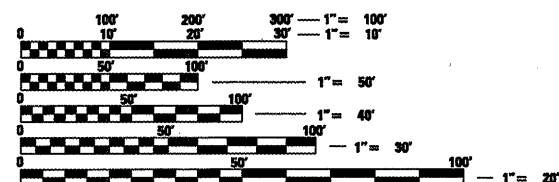
SUBMITTED April 2, 2008

CO. L. M. Reed
DEPUTY DIRECTOR OF HIGHWAYS, REGION ENGINEER

May 9, 2008
Eric E. Stamm
INTERIM ENGINEER OF DESIGN AND ENVIRONMENT

May 9, 2008
Christine M. Reed
DIRECTOR OF HIGHWAYS, CHIEF ENGINEER

**PRINTED BY THE AUTHORITY
OF THE STATE OF ILLINOIS**



FULL SIZE PLANS HAVE BEEN PREPARED USING STANDARD ENGINEERING SCALES. REDUCED SIZED PLANS WILL NOT CONFORM TO STANDARD SCALES. IN MAKING MEASUREMENTS ON REDUCED PLANS, THE ABOVE SCALES MAY BE USED.

J.U.L.I.E.
JOINT UTILITY LOCATION INFORMATION FOR EXCAVATION
1-800-892-0123



GROSS LENGTH OF PROJECT: 59,428.82 FEET = 11.26 MILES
NET LENGTH OF PROJECT: 26,592.00 FEET = 5.04 MILES

PROJECT ENGINEER: SAL MADONIA (217) 782-4761
SQUAD LEADER: JEFF MYERS (217) 524-7940

CONTRACT NO. 72C03

F.A.I. RTE.	SECTION	COUNTY	TOTAL SHEETS	SHEET NO.
55	•	MACOUPIN	18	2
STA.		TO STA.		
FED. ROAD DIST. NO.		ILLINOIS FED. AID PROJECT		

• D6 INTERMITTENT RS 2009

GENERAL NOTES

- THE CONTRACTOR SHALL BE RESPONSIBLE FOR PROTECTING UTILITY PROPERTY FROM CONSTRUCTION OPERATIONS AS OUTLINED IN ARTICLE 107.31 OF THE STANDARD SPECIFICATIONS. THE JULIE NUMBER IS 800-892-0123. A MINIMUM OF FORTY-EIGHT HOURS ADVANCE NOTICE IS REQUIRED. ANY DAMAGE TO THE UNDERGROUND FACILITIES, CAUSED BY THE CONTRACTOR SHALL BE REPAIRED TO THE SATISFACTION OF THE DEPARTMENT AT THE CONTRACTOR'S EXPENSE, INCLUDING TEMPORARY REPAIRS WHICH MAY BE REQUIRED TO KEEP THE FACILITY OPERATIONAL WHILE MATERIAL IS BEING OBTAINED TO MAKE PERMANENT REPAIRS.
- THE LOCATIONS OF THOSE BURIED AND ABOVEGROUND UTILITIES SHOWN ARE APPROXIMATE, ARE SHOWN FOR CONTRACTOR INFORMATIONAL USE ONLY, AND ARE NOT TO BE REFERENCED FOR CONSTRUCTIONS PURPOSES. THE IMPLIED PRESENCE OR ABSENCE OF UTILITIES IS NOT TO BE CONSTRUED BY THE OWNER, ENGINEER, CONTRACTOR, OR SUBCONTRACTORS TO BE AN ACCURATE AND COMPLETE REPRESENTATION OF UTILITIES THAT MAY OR MAY NOT EXIST ON THE CONSTRUCTION SITE. BURIED AND ABOVEGROUND UTILITY LOCATION, IDENTIFICATION, AND MARKING ARE THE SOLE RESPONSIBILITY OF THE CONTRACTOR. REROUTING, DISCONNECTION, PROTECTION, ETC. OF ANY UTILITIES MUST BE COORDINATED BETWEEN THE CONTRACTOR, UTILITY COMPANY, AND OWNER. SITE SAFETY, INCLUDING THE AVOIDANCE OF HAZARDS ASSOCIATED WITH BURIED AND ABOVEGROUND UTILITIES, REMAINS THE SOLE RESPONSIBILITY OF THE CONTRACTOR.
- THE THICKNESS OF HOT-MIX ASPHALT SHOWN ON THE PLANS IS THE NOMINAL THICKNESS. DEVIATIONS FROM THE NOMINAL THICKNESS WILL BE PERMITTED WHEN SUCH DEVIATIONS OCCUR DUE TO IRREGULARITIES IN THE EXISTING SURFACE OR BASE ON WHICH THE BITUMINOUS MIXTURE IS PLACED.
- WHERE SECTION OR SUBSECTION MONUMENTS ARE ENCOUNTERED, THE ENGINEER SHALL BE NOTIFIED BEFORE SUCH MONUMENTS ARE REMOVED. THE CONTRACTOR SHALL PROTECT AND CAREFULLY PRESERVE ALL MONUMENTS UNTIL AN AUTHORIZED SURVEYOR OR AGENT HAS WITNESSED OR OTHERWISE REFERENCED THEIR LOCATION. THE CONTRACTOR SHALL BE RESPONSIBLE FOR HAVING AN AUTHORIZED SURVEYOR RE-ESTABLISH ANY SECTION OR SUBSECTION MONUMENTS DESTROYED BY HIS OPERATIONS.
- THE FOLLOWING RATES OF APPLICATION HAVE BEEN USED IN CALCULATING PLAN QUANTITIES:

HOT-MIX ASPALT MATERIAL (PRIME COAT)	0.00038	TON/SQ YD
HOT-MIX ASPHALT SURFACE CSE	112	LBS/SQ YD/IN
- ANY REFERENCE TO A STANDARD IN THESE PLANS SHALL BE INTERPRETED TO MEAN THE EDITION AS INDICATED BY THE SUBNUMBER LISTED ON THE INDEX OF SHEETS OR THE COPY OF THE STANDARD INCLUDED IN THESE PLANS.
- UNLESS NOTED OTHERWISE, STATIONS AND OFFSETS REFER TO CENTERLINE OF PROJECT.
- IN ADDITION TO FIELD SURVEYS AND AERIAL SURVEYS, PLAN DIMENSIONS AND DETAILS RELATIVE TO THE EXISTING FACILITIES HAVE BEEN TAKEN FROM EXISTING PLANS AND ARE SUBJECT TO CONSTRUCTION VARIATIONS. IT SHALL BE THE CONTRACTOR'S RESPONSIBILITY TO VERIFY SUCH DIMENSIONS AND DETAILS IN THE FIELD. SUCH VARIATIONS SHALL NOT BE A CAUSE FOR ADDITIONAL COMPENSATION DUE TO A CHANGE IN THE SCOPE OF THE WORK. HOWEVER, THE CONTRACTOR WILL BE PAID FOR THE QUANTITY ACTUALLY FURNISHED AT THE UNIT PRICE BID FOR THE WORK.

COMMITMENTS

NONE

MIXTURE REQUIREMENTS

MIXTURE NUMBER:	
LOCATION	1-55
MIXTURE USE (S):	HMA SURFACE
AC/PG:	SBS PG 70-22
DESIGN AIR VOIDS:	4.0% @ N DESIGN = 105
MIXTUR COMPOSITION (GRADATION MIXTURE)	IL 9.5 OR 12.5
FRICTION AGGREGATE	MIX "E"

DISTRICT SIX	
EXAMINED <u>March 13</u> 20 <u>08</u>	<u>[Signature]</u>
OPERATIONS ENGINEER	
EXAMINED <u>MAR 27</u> 20 <u>08</u>	<u>[Signature]</u>
PROGRAM IMPLEMENTATION ENGINEER	
EXAMINED <u>April 2</u> 20 <u>08</u>	<u>[Signature]</u>
PROGRAM DEVELOPMENT ENGINEER	

REVISIONS	
NAME	DATE

ILLINOIS DEPARTMENT OF TRANSPORTATION
GENERAL NOTES
 FAI 55
 SECTION D6 INTERMITTENT RS 2009
 MACOUPIN COUNTY
 SCALE: NOT DRAWN TO SCALE
 DATE _____ DRAWN BY _____
 CHECKED BY _____

F.A.I. RTE.	SECTION	COUNTY	TOTAL SHEETS	SHEET NO.
55	*	MACOUPIN	18	3
STA.		TO STA.		
FED. ROAD DIST. NO.	ILLINOIS FED. AID PROJECT			

* D6 INTERMITTENT RS 2009

ILLINOIS DEPARTMENT OF TRANSPORTATION
SUMMARY OF QUANTITIES

LOCATION OF WORK				100% STATE
SUMMARY OF QUANTITIES				CONSTRUCTION TYPE CODE
CODE NO.	ITEM	UNIT	TOTAL QUANTITY	1000-2A
40600200	BITUMINOUS MATERIALS (PRIME COAT)	TON	15	15
40600895	CONSTRUCTING TEST STRIP	EACH	1	1
40603575	POLYMERIZED HOT-MIX ASPHALT SURFACE COURSE, MIX "E", N105	TON	3,992	3,992
44000156	HOT-MIX ASPHALT SURFACE REMOVAL, 1 3/4"	SQ YD	40,736	40,736
67100100	MOBILIZATION	L SUM	1	1
67000400	ENGINEER'S FIELD OFFICE, TYPE A	CAL MO	2	2
70100420	TRAFFIC CONTROL AND PROTECTION, STANDARD 701411	EACH	4	4
70100700	TRAFFIC CONTROL AND PROTECTION, STANDARD 701406	L SUM	1	1
70103710	TRAFFIC CONTROL FOR RAMPS	L SUM	1	1
70106800	CHANGEABLE MESSAGE SIGN	CAL MO	2	2
70300100	SHORT-TERM PAVEMENT MARKING	FOOT	2,671	2,671
70301000	WORK ZONE PAVEMENT MARKING REMOVAL	SQ FT	890	890
* 78100100	RAISED REFLECTIVE PAVEMENT MARKER	EACH	182	182
78300200	RAISED REFLECTIVE PAVEMENT MARKER REMOVAL	EACH	182	182
* X7800620	URETHANE PAVEMENT MARKING - LINE 5"	FOOT	35,904	35,904

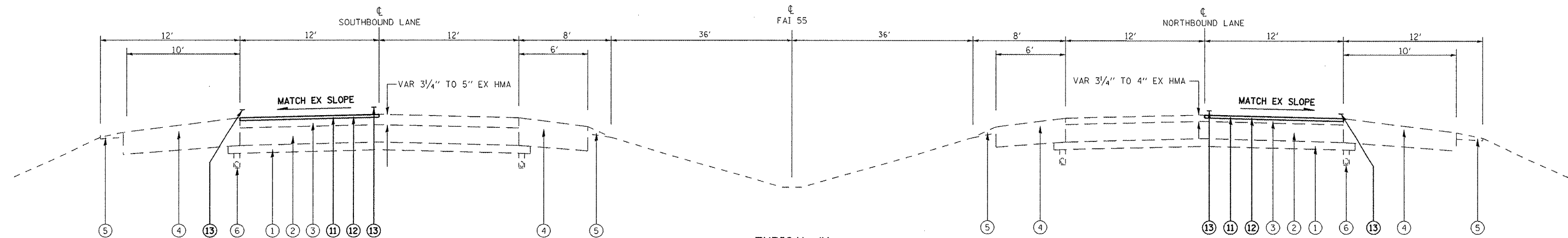
* SPECIALTY ITEMS

REVISIONS	
NAME	DATE

ILLINOIS DEPARTMENT OF TRANSPORTATION
SUMMARY OF QUANTITIES
FAI 55
SECTION D6 INTERMITTENT RS 2009
MACOUPIN COUNTY
SCALE: NOT DRAWN TO SCALE DRAWN BY
DATE CHECKED BY

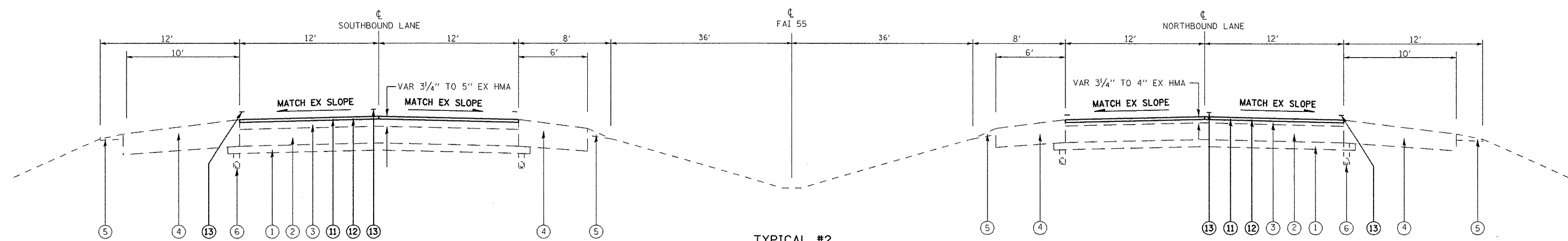
CONTRACT 72C03				
F.A.I. RTE.	SECTION	COUNTY	TOTAL SHEETS	SHEET NO.
55	*	MACOUPIN	18	4
STA.		TO STA.		
FED. ROAD DIST. NO.		ILLINOIS FED. AID PROJECT		

• D6 INTERMITTENT RS 2009



TYPICAL #1
FAI - 55

- | | |
|-----------------------------|-----------------------------|
| NB STA 300+00 TO STA 347+00 | NB STA 597+00 TO STA 610+00 |
| NB STA 394+00 TO STA 459+00 | NB STA 616+00 TO STA 620+00 |
| SB STA 425+00 TO STA 447+00 | NB STA 625+00 TO STA 635+00 |
| SB STA 454+00 TO STA 474+00 | NB STA 638+00 TO STA 647+00 |
| SB STA 508+00 TO STA 513+00 | NB STA 678+48 TO STA 689+00 |
| SB STA 518+00 TO STA 524+00 | NB STA 796+00 TO STA 806+00 |
| NB STA 548+00 TO STA 552+00 | NB STA 173+50 TO STA 245+50 |



TYPICAL #2
FAI - 55

- SB STA 675+05 TO STA 676+05
 NB STA 675+30 TO STA 676+30
 SB STA 677+37 TO STA 678+37
 NB STA 677+48 TO STA 678+48

NOTE: NORTH OF STATION 500+00 SKIP-DASH AND REFLECTIVE MARKERS ARE IN THE DRIVING LANE

EXISTING LEGEND	PROPOSED LEGEND
① EX GRANULAR MATERIAL 4"	⑪ PR HOT-MIX ASPHALT SURFACE REMOVAL, 1 3/4"
② EX CRPCC 9"	⑫ PR POLYMERIZED HOT-MIX ASPHALT CONC SURF CSE. MIX "E" N105 1 3/4"
③ EX HOT-MIX ASPHALT SURFACE COURSE (VARIES 3/4" TO 5")	⑬ PR POLYUREA PAVEMENT MARKING - LINE 5"
④ EX HOT-MIX ASPHALT SHOULDERS (THICKNESS VARIES)	
⑤ EX AGGREGATE SHOULDERS	
⑥ EX PIPE UNDERDRAINS 4"	

REVISIONS	
NAME	DATE

ILLINOIS DEPARTMENT OF TRANSPORTATION
 TYPICAL SECTIONS
 FAI 55
 SECTION D6 INTERMITTENT RS 2009
 MACOUPIN COUNTY
 SCALE: NOT DRAWN TO SCALE
 DATE _____ DRAWN BY _____
 CHECKED BY _____

F.A.I. RTE.	SECTION	COUNTY	TOTAL SHEETS	SHEET NO.
55	•	MACOUPIN	18	5
STA.		TO STA.		
FED. ROAD DIST. NO.		ILLINOIS FED. AID PROJECT		

• D6 INTERMITTENT RS 2009

PAVING SCHEDULE

LOCATION	PAVEMENT WIDTH (FOOT)	HMA SURF REM 1.75" (SQ YD)	BIT MATL PR CT (TON)	SURFACE DEPTH (INCHES)	POLYMER SURFACE N105 (TON)
I-55 MAINLINE					
NORTHBOUND					
STA 300+00.00 TO STA 325+50.00	12	3,400.00	1.29	1.75	333.20
STA 394+00.00 TO STA 459+00.00	12	8,666.67	3.29	1.75	849.33
STA 614+50.00 TO STA 623+00.00	12	1,133.33	0.43	1.75	111.07
STA 628+00.00 TO STA 635+00.00	12	933.33	0.35	1.75	91.47
STA 645+00.00 TO STA 664+00.00	12	2,533.33	0.96	1.75	248.27
STA 675+32.00 TO STA 676+32.00	24	266.67	0.10	1.75	26.13
STA 677+48.00 TO STA 678+48.00	24	266.67	0.10	1.75	26.13
STA 678+48.00 TO STA 689+00.00	12	1,402.67	0.53	1.75	137.46
STA 796+00.00 TO STA 806+00.00	12	1,333.33	0.51	1.75	130.67
STA 173+50.00 TO STA 245+50.00	12	9,600.00	3.65	1.75	940.80
SOUTHBOUND					
STA 425+00.00 TO STA 474+00.00	12	6,533.33	2.48	1.75	640.27
STA 497+00.00 TO STA 528+00.00	12	4,133.33	1.57	1.75	405.07
STA 675+04.00 TO STA 676+04.00	24	266.67	0.10	1.75	26.13
STA 677+36.00 TO STA 678+36.00	24	266.67	0.10	1.75	26.13
TOTAL		40,736.00	15.46		3,992.13

PAVEMENT MARKING SCHEDULE

LOCATION	LENGTH (FOOT)	URETHANE EDGE LINE (FOOT)	PAVT MARK CENTER LINE (FOOT)	MARK LINE - 5" TOTAL (FOOT)	SHORT TERM PAVT MK (FOOT)	WORK ZONE PAVT MARK REM (SQ FT)	RAISED REFL REM (EACH)	RAISED REFL (EACH)
I-55 MAINLINE								
NORTHBOUND								
STA 300+00.00 TO STA 325+50.00	2,550.00	2,550.00	640.00	3,190.00	357.00	119.00	32	32
STA 394+00.00 TO STA 459+00.00	6,500.00	6,500.00	1,630.00	8,130.00	910.00	303.33	81	81
STA 614+50.00 TO STA 623+00.00	850.00	850.00		850.00	34.00	11.33		
STA 628+00.00 TO STA 635+00.00	700.00	700.00		700.00	28.00	9.33		
STA 645+00.00 TO STA 664+00.00	1,900.00	1,900.00		1,900.00	76.00	25.33		
STA 675+32.00 TO STA 676+32.00	100.00	100.00	30.00	130.00	14.00	4.67	1	1
STA 677+48.00 TO STA 678+48.00	100.00	100.00	30.00	130.00	14.00	4.67	1	1
STA 678+48.00 TO STA 689+00.00	1,052.00	2,104.00		2,104.00	42.08	14.03		
STA 796+00.00 TO STA 806+00.00	1,000.00	2,000.00		2,000.00	40.00	13.33		
STA 173+50.00 TO STA 245+50.00	7,200.00	7,200.00		7,200.00	288.00	96.00		
SOUTHBOUND								
STA 425+00.00 TO STA 474+00.00	4,900.00	4,900.00	1,230.00	6,130.00	686.00	228.67	61	61
STA 497+00.00 TO STA 500+00.00	300.00	300.00	80.00	380.00	42.00	14.00	4	4
STA 500+00.00 TO STA 528+00.00	2,800.00	2,800.00		2,800.00	112.00	37.33		
STA 675+04.00 TO STA 676+04.00	100.00	100.00	30.00	130.00	14.00	4.67	1	1
STA 677+36.00 TO STA 678+36.00	100.00	100.00	30.00	130.00	14.00	4.67	1	1
TOTAL		32,204.00	3,700.00	35,904.00	2,671.08	890.36	182	182

REVISIONS	
NAME	DATE

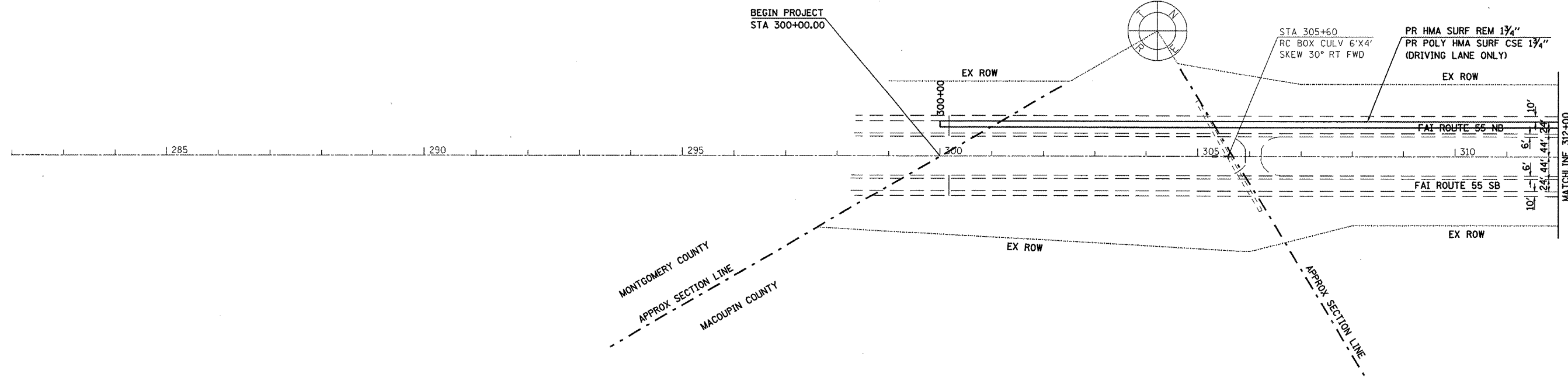
ILLINOIS DEPARTMENT OF TRANSPORTATION
SCHEDULE OF QUANTITIES
 FAI 55
 SECTION D6 INTERMITTENT RS 2009
 MACOUPIN COUNTY

SCALE _____ DRAWN BY _____
 DATE _____ CHECKED BY _____

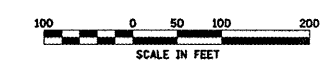
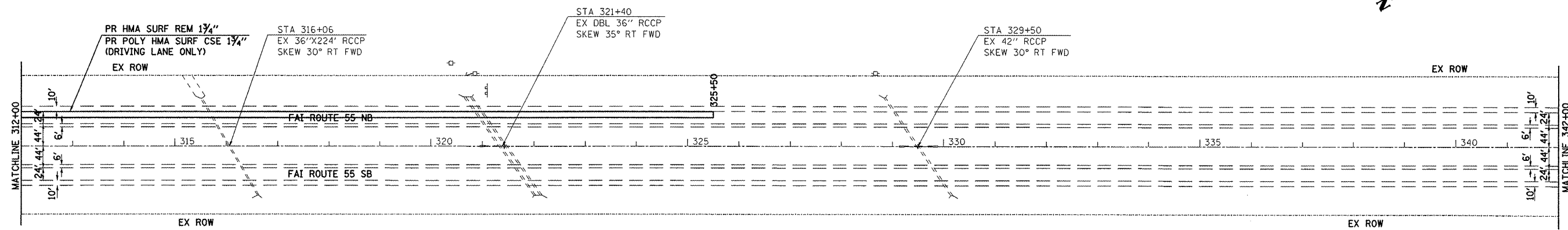
CONTRACT 72C03			
F.A.I. RTE.	SECTION	COUNTY	TOTAL SHEETS
55	*	MACOUPIN	18
STA. 282+00.00		TO STA. 342+00.00	
FED. ROAD DIST. NO.		ILLINOIS FED. AID PROJECT	
* SECTION D6 INTERMITTENT RS 2009			

SEC 18, T8N, R6W, 3RD PM

SEC 13, T8N, R6W, 3RD PM



SEC 13, T8N, R6W, 3RD PM



REVISIONS	
NAME	DATE

ILLINOIS DEPARTMENT OF TRANSPORTATION

PLAN SHEETS
FAI 55
SECTION D6 INTERMITTENT RS 2009
MACOUPIN COUNTY

SCALE: _____ DRAWN BY _____
DATE: _____ CHECKED BY _____

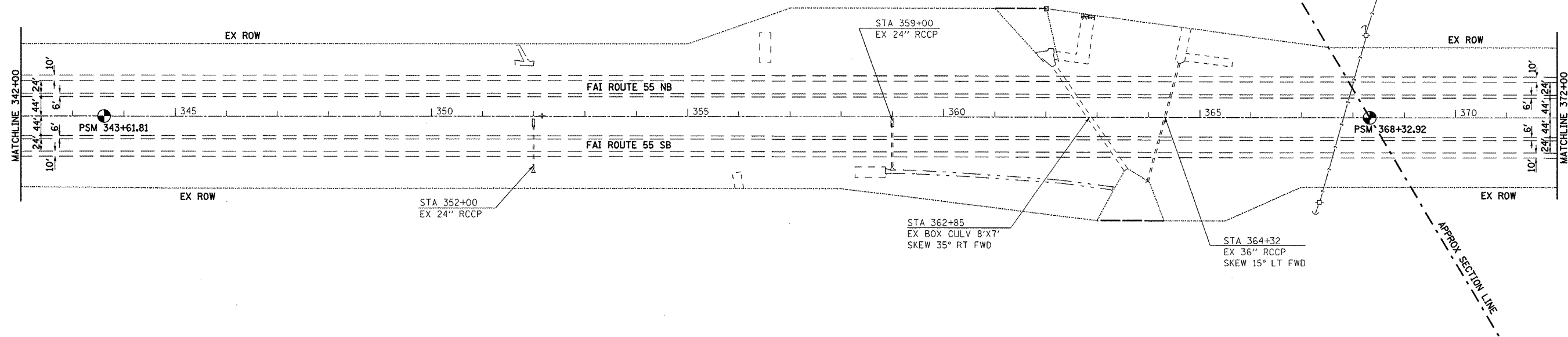
C:\Projects\672c03\sheets\00.dgn
Apr-01-2008 07:35:42AM
*REF 01

CONTRACT 72C03

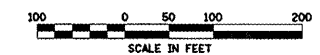
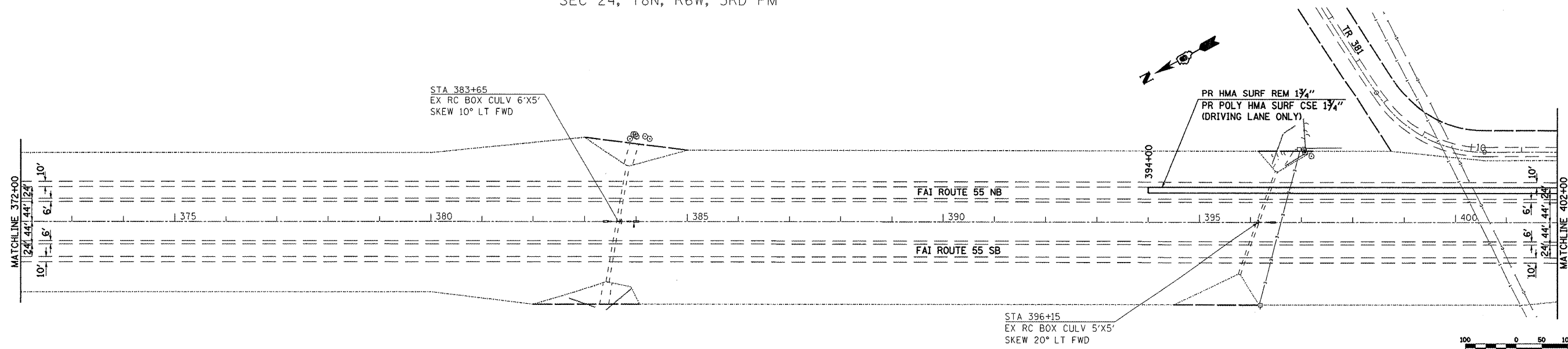
F.A.I. RTE.	SECTION	COUNTY	TOTAL SHEETS	SHEET NO.
55	*	MACOUPIN	18	7
STA. 342+00.00		TO STA. 402+00.00		
FED. ROAD DIST. NO.		ILLINOIS FED. AID PROJECT		

* SECTION D6 INTERMITTENT RS 2009

SEC 13, T8N, R6W, 3RD PM



SEC 24, T8N, R6W, 3RD PM

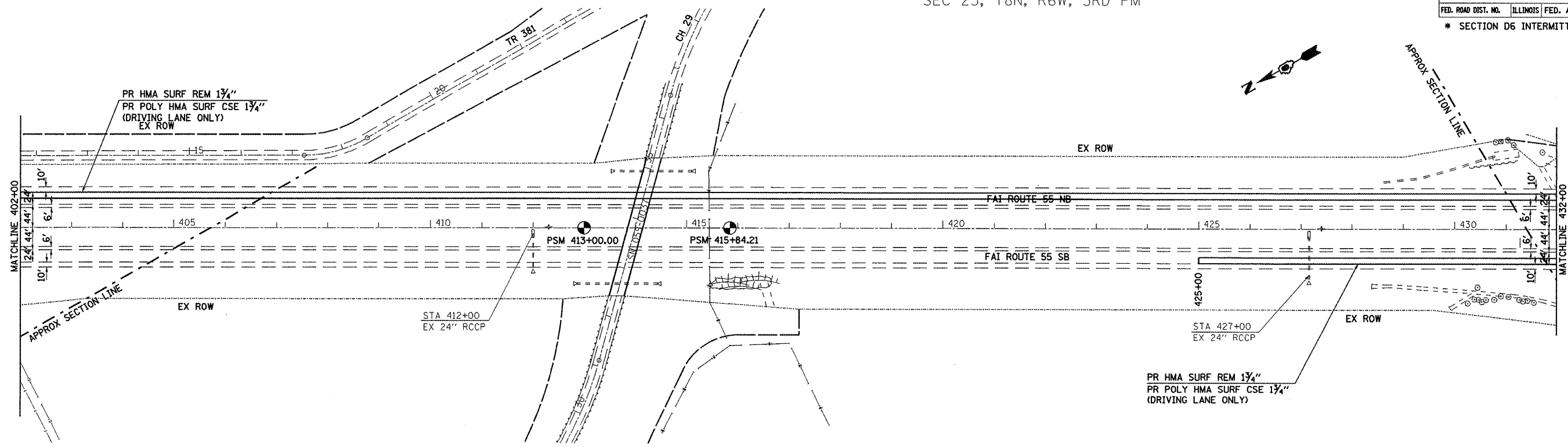


REVISIONS	
NAME	DATE

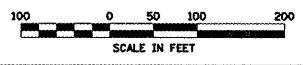
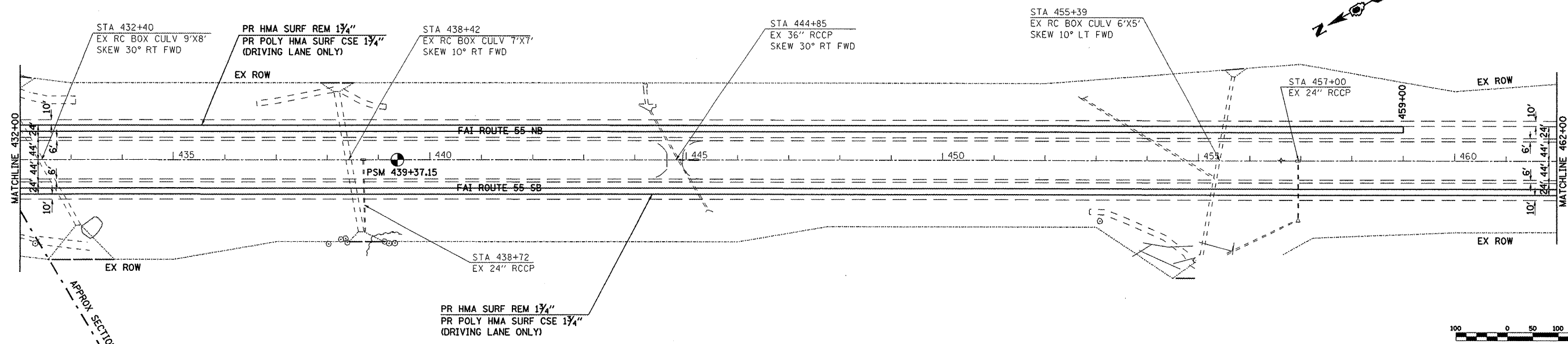
ILLINOIS DEPARTMENT OF TRANSPORTATION
 PLAN SHEETS
 FAI 55
 SECTION D6 INTERMITTENT RS 2009
 MACOUPIN COUNTY
 SCALE: _____ DRAWN BY _____
 DATE: _____ CHECKED BY _____

CONTRACT 72C03			
F.A.I. RTE.	SECTION	COUNTY	TOTAL SHEETS
55	*	MACOUPIN	18
STA. 402+00.00		TO STA. 462+00.00	
FED. ROAD DIST. NO.	ILLINOIS FED. AID PROJECT		
* SECTION D6 INTERMITTENT RS 2009			

SEC 23, T8N, R6W, 3RD PM



SEC 26, T8N, R6W, 3RD PM



REVISIONS	
NAME	DATE

ILLINOIS DEPARTMENT OF TRANSPORTATION

PLAN SHEETS
FAI 55
SECTION D6 INTERMITTENT RS 2009
MACOUPIN COUNTY

SCALE:
DATE:

DRAWN BY
CHECKED BY

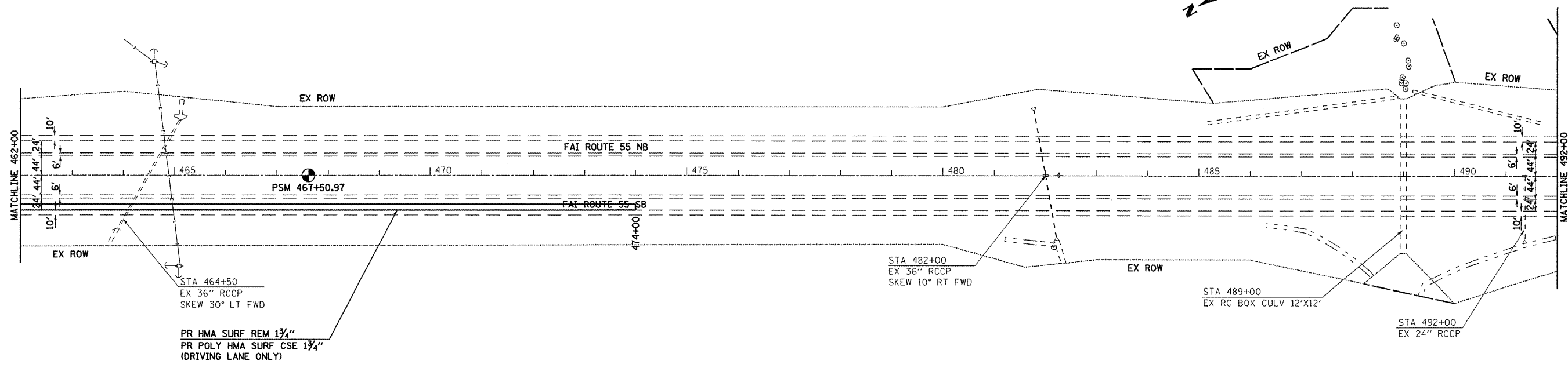
C:\p\o\sec\ss\d672\03\sheet\100.dgn
Apr 01 2009 07:35:56AM
PREFBI

SEC 26, T8N, R6W, 3RD PM

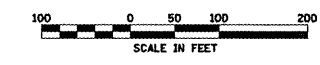
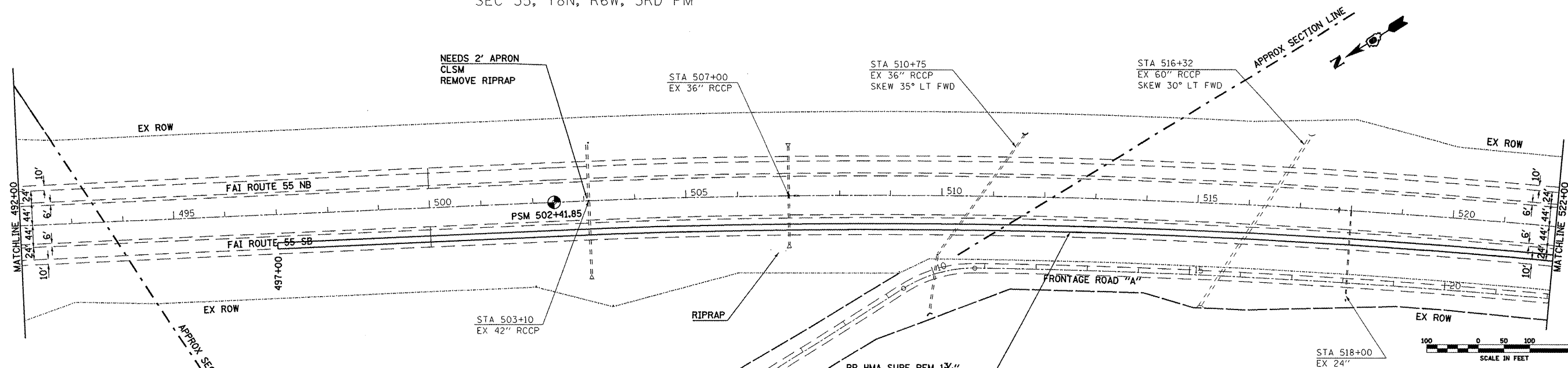
CONTRACT 72C03

F.A.I. RTE.	SECTION	COUNTY	TOTAL SHEETS	SHEET NO.
55	*	MACOUPIN	18	9
STA. 462+00.00		TO STA. 522+00.00		
FED. ROAD DIST. NO.		ILLINOIS FED. AID PROJECT		

* SECTION D6 INTERMITTENT RS 2009



SEC 35, T8N, R6W, 3RD PM



REVISIONS	
NAME	DATE

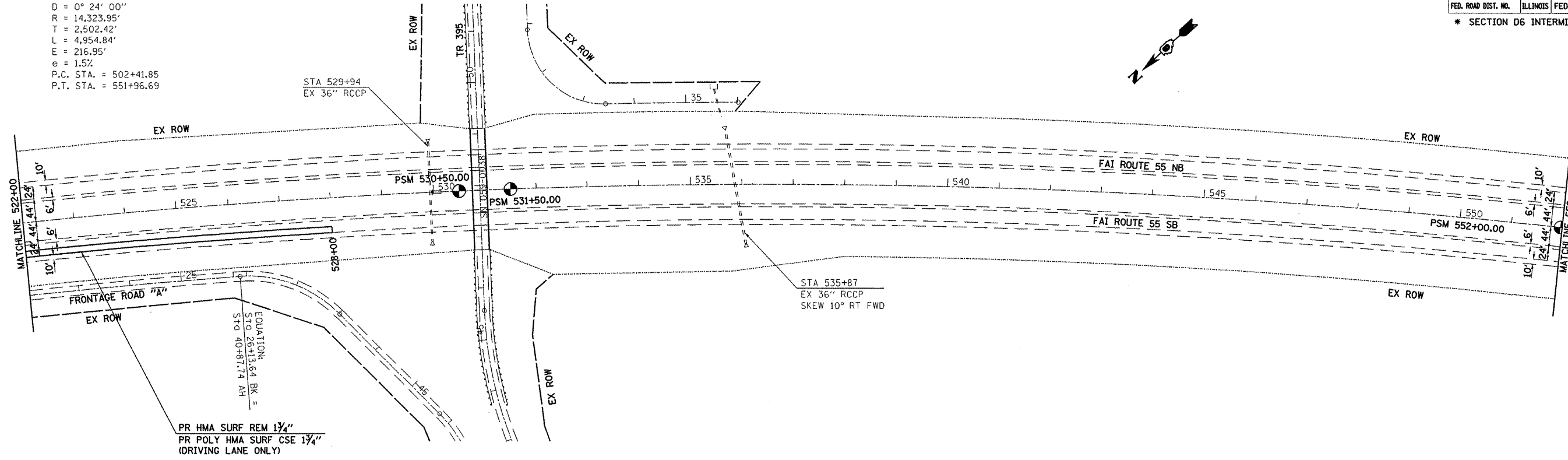
ILLINOIS DEPARTMENT OF TRANSPORTATION
 PLAN SHEETS
 FAI 55
 SECTION D6 INTERMITTENT RS 2009
 MACOUPIN COUNTY
 SCALE: _____ DRAWN BY _____
 DATE: _____ CHECKED BY _____

C:\Projects\6672503\shene\100.dgn
 Apr-01-2008 07:53:53 AM
 REF 01

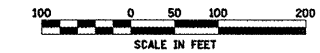
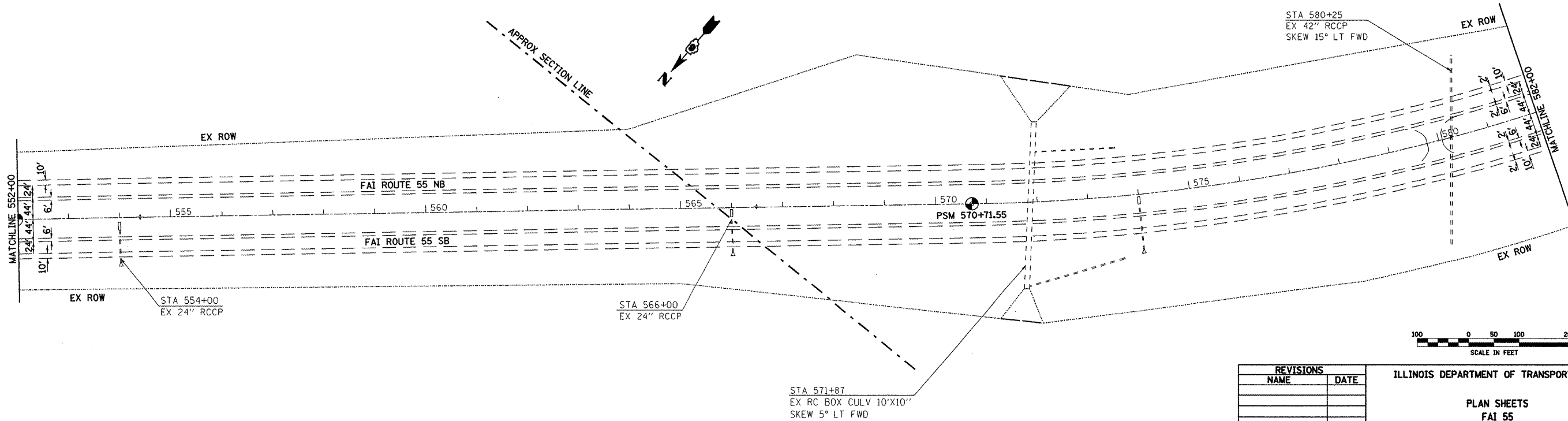
F.A.I. RTE.	SECTION	COUNTY	TOTAL SHEETS	SHEET NO.
55	*	MACOUPIN	18	10
STA. 522+00.00		TO STA. 582+00.00		
FED. ROAD DIST. NO. ILLINOIS FED. AID PROJECT				
* SECTION D6 INTERMITTENT RS 2009				

EXIST. CURVE I55N-1
PI STA. = 527+44.27
 $\Delta = 19^\circ 49' 10''$ (RT)
D = $0^\circ 24' 00''$
R = 14,323.95'
T = 2,502.42'
L = 4,954.84'
E = 216.95'
e = 1.5%
P.C. STA. = 502+41.85
P.T. STA. = 551+96.69

SEC 34, T8N, R6W, 3RD PM



SEC 3, T7N, R6W, 3RD PM



REVISIONS	
NAME	DATE

ILLINOIS DEPARTMENT OF TRANSPORTATION

PLAN SHEETS
FAI 55
SECTION D6 INTERMITTENT RS 2009
MACOUPIN COUNTY

SCALE: _____
DATE: _____

DRAWN BY _____
CHECKED BY _____

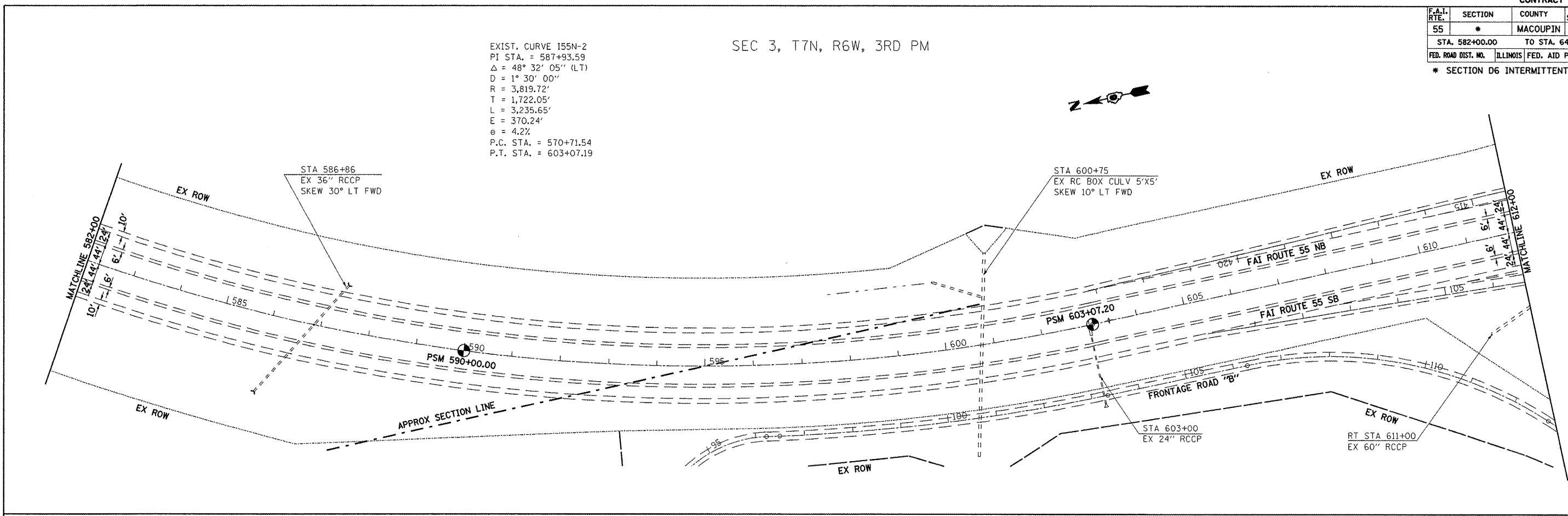
CONTRACT 72C03

F.A.I. RTE.	SECTION	COUNTY	TOTAL SHEETS	SHEET NO.
55	*	MACOUPIN	18	11
STA. 582+00.00		TO STA. 642+00.00		
FED. ROAD DIST. NO.		ILLINOIS FED. AID PROJECT		

* SECTION D6 INTERMITTENT RS 2009

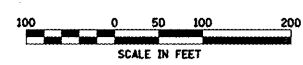
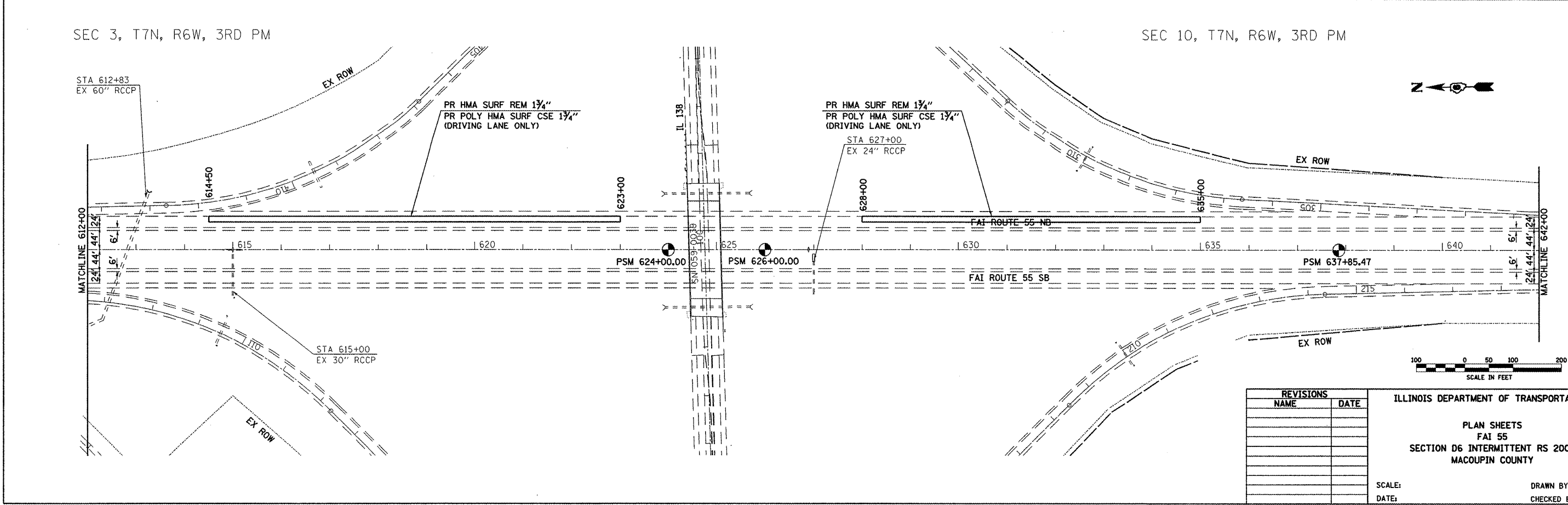
SEC 3, T7N, R6W, 3RD PM

EXIST. CURVE I55N-2
 PI STA. = 587+93.59
 $\Delta = 48^\circ 32' 05''$ (LT)
 $D = 1^\circ 30' 00''$
 $R = 3,819.72'$
 $T = 1,722.05'$
 $L = 3,235.65'$
 $E = 370.24'$
 $e = 4.2\%$
 P.C. STA. = 570+71.54
 P.T. STA. = 603+07.19



SEC 3, T7N, R6W, 3RD PM

SEC 10, T7N, R6W, 3RD PM



REVISIONS	
NAME	DATE

ILLINOIS DEPARTMENT OF TRANSPORTATION
 PLAN SHEETS
 FAI 55
 SECTION D6 INTERMITTENT RS 2009
 MACOUPIN COUNTY
 SCALE: _____ DRAWN BY _____
 DATE: _____ CHECKED BY _____

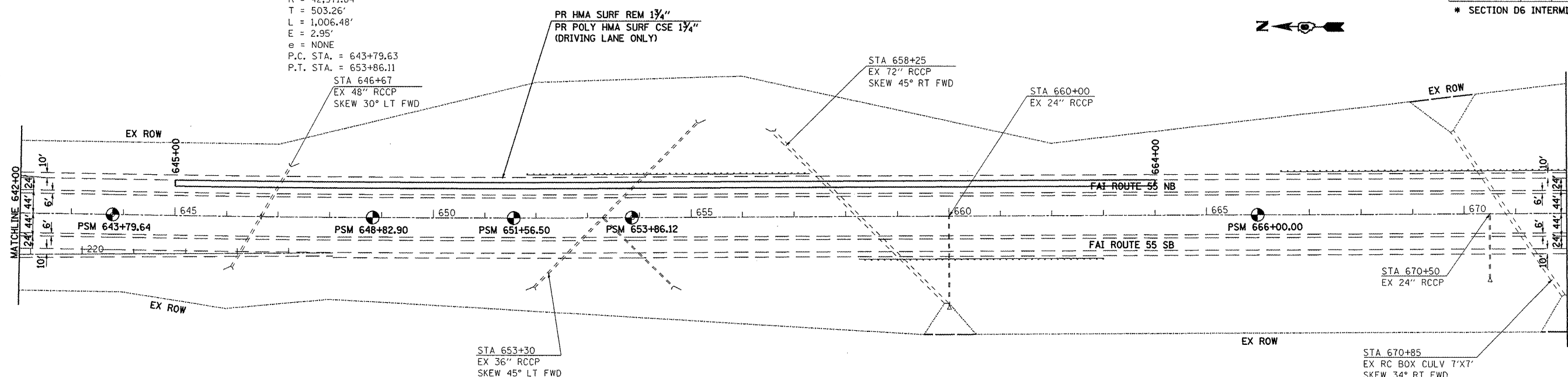
C:\Projects\0672c03\sheet10b.dgn
 Apr-01-2009 07:36:01AM
 HEP:01

CONTRACT 72C03

F.A.I. RTE.	SECTION	COUNTY	TOTAL SHEETS	SHEET NO.
55	*	MACOUPIN	18	12
STA. 642+00.00		TO STA. 702+00.00		
FED. ROAD DIST. NO. ILLINOIS FED. AID PROJECT				
* SECTION D6 INTERMITTENT RS 2009				

SEC 10, T7N, R6W, 3RD PM

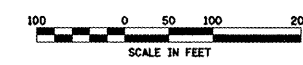
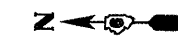
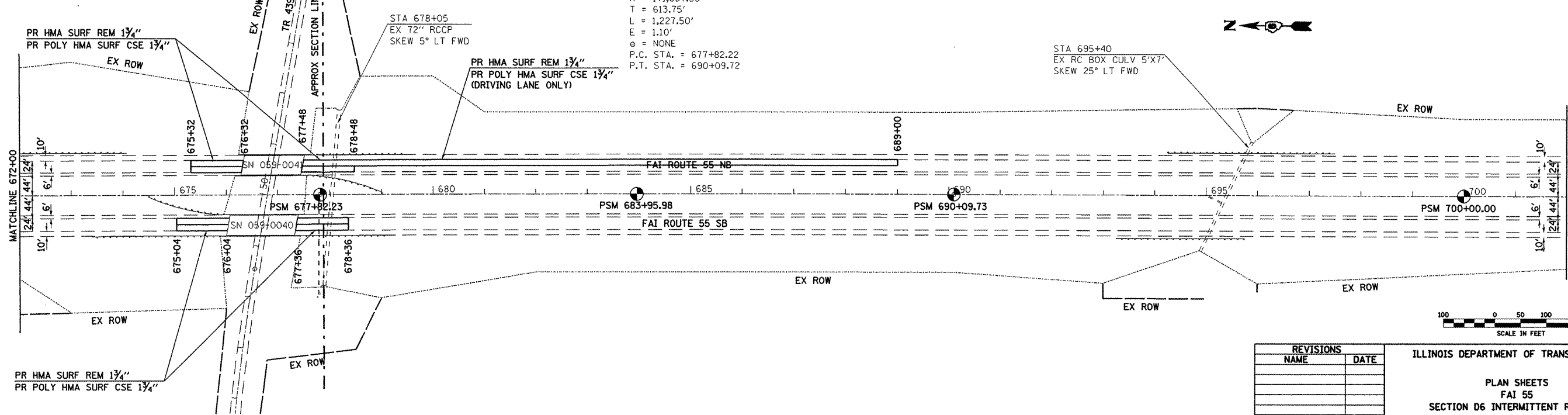
EXIST. CURVE I55N-3
 PI STA. = 648+82.89
 $\Delta = 1^\circ 20' 31''$ (LT)
 $D = 0^\circ 08' 00''$
 $R = 42,971.84'$
 $T = 503.26'$
 $L = 1,006.48'$
 $E = 2.95'$
 $e = \text{NONE}$
 P.C. STA. = 643+79.63
 P.T. STA. = 653+86.11



SEC 10, T7N, R6W, 3RD PM

SEC 15, T7N, R6W, 3RD PM

EXIST. CURVE I55N-4
 PI STA. = 683+95.97
 $\Delta = 0^\circ 24' 33''$ (RT)
 $D = 0^\circ 02' 00''$
 $R = 171,887.30'$
 $T = 613.75'$
 $L = 1,227.50'$
 $E = 1.10'$
 $e = \text{NONE}$
 P.C. STA. = 677+82.22
 P.T. STA. = 690+09.72



REVISIONS	
NAME	DATE

ILLINOIS DEPARTMENT OF TRANSPORTATION

PLAN SHEETS
 FAI 55
 SECTION D6 INTERMITTENT RS 2009
 MACOUPIN COUNTY

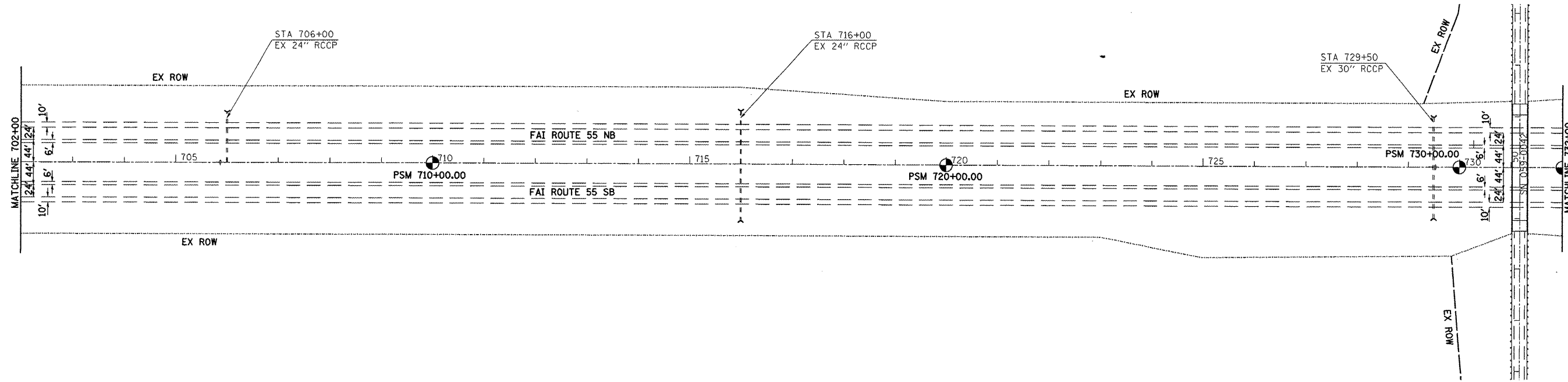
SCALE: _____
 DATE: _____

DRAWN BY _____
 CHECKED BY _____

C:\p\proj\sec10\672e02\shw\sheet100.dgn
 Apr-01-2008 07:35:05AM
 *REF:01

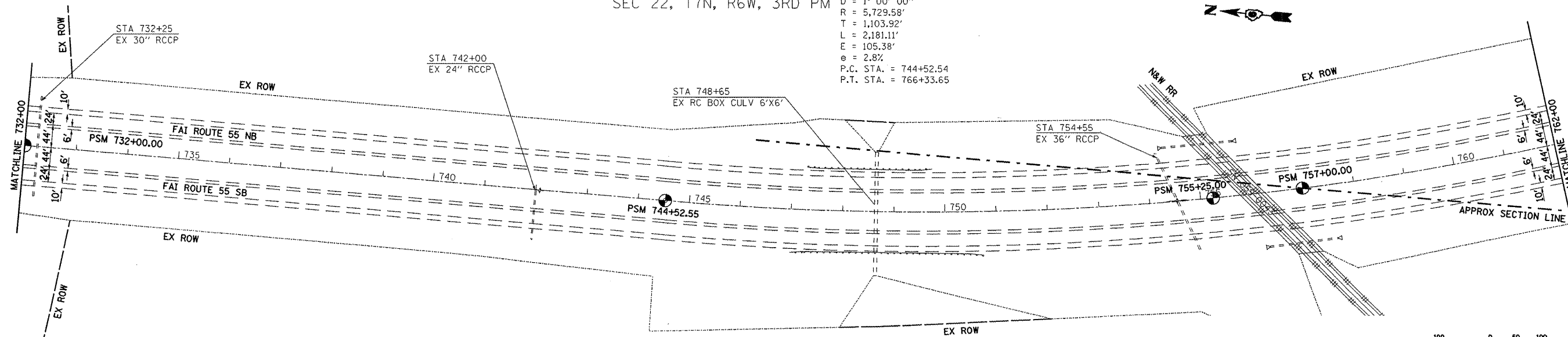
SEC 15, T7N, R6W, 3RD PM

CONTRACT 72C03				
F.A.I. RTE.	SECTION	COUNTY	TOTAL SHEETS	SHEET NO.
55	*	MACOUPIN	18	13
STA. 702+00.00 TO STA. 762+00.00				
FED. ROAD DIST. NO.		ILLINOIS FED. AID PROJECT		
* SECTION D6 INTERMITTENT RS 2009				



SEC 22, T7N, R6W, 3RD PM

EXIST. CURVE 155N-5
 PI STA. = 755+56.46
 $\Delta = 21^\circ 48' 40''$ (LT)
 $D = 1^\circ 00' 00''$
 $R = 5,729.58'$
 $T = 1,103.92'$
 $L = 2,181.11'$
 $E = 105.38'$
 $\theta = 2.8\%$
 P.C. STA. = 744+52.54
 P.T. STA. = 766+33.65



REVISIONS	
NAME	DATE

ILLINOIS DEPARTMENT OF TRANSPORTATION

PLAN SHEETS
 FAI 55
 SECTION D6 INTERMITTENT RS 2009
 MACOUPIN COUNTY

SCALE: _____ DRAWN BY _____
 DATE: _____ CHECKED BY _____

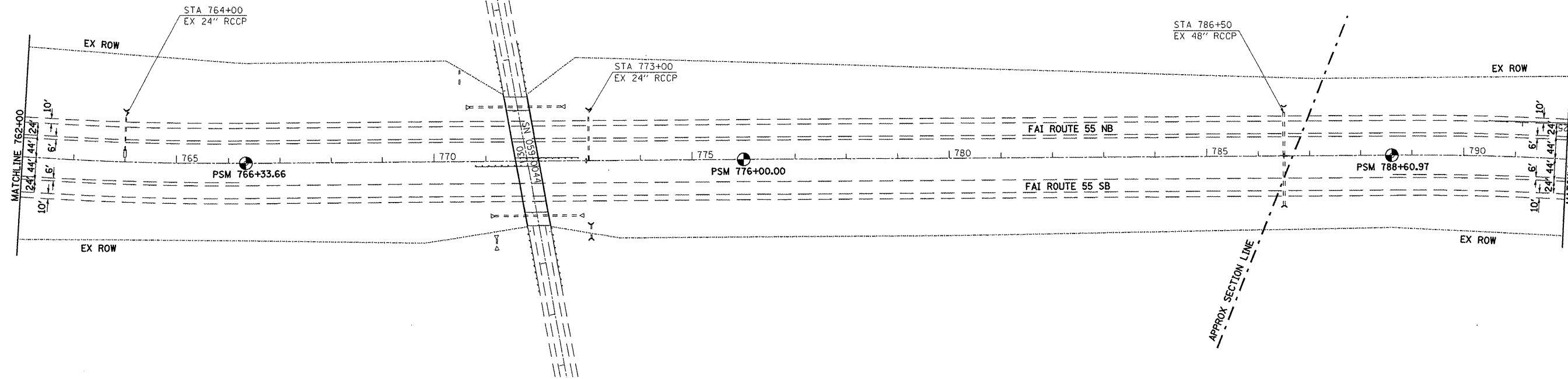
C:\Projects\ts1\6572c03\shere\ts100.dgn
 Apr-01-2008 07:36:09AM
 *REF01

CONTRACT 72C03

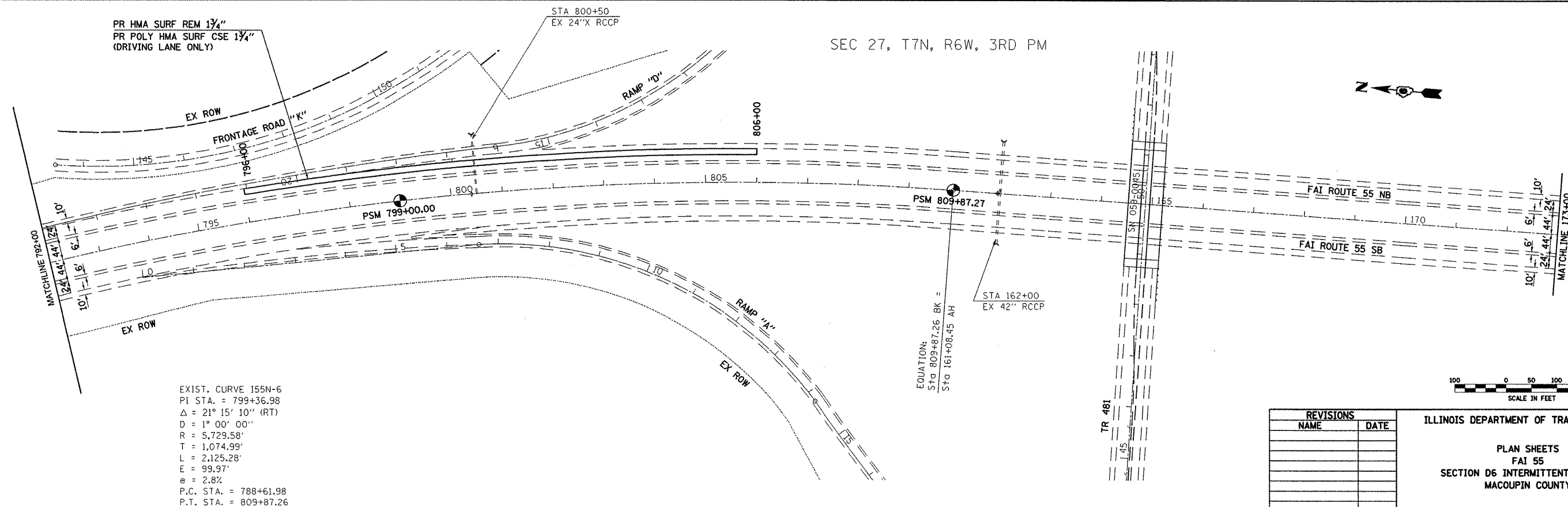
F.A.I. RTE.	SECTION	COUNTY	TOTAL SHEETS	SHEET NO.
55	*	MACOUPIN	18	14
STA. 762+00.00		TO STA. 173+00.00		
FED. ROAD DIST. NO.		ILLINOIS FED. AID PROJECT		

* SECTION D6 INTERMITTENT RS 2009

SEC 22, T7N, R6W, 3RD PM

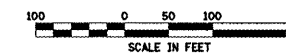


SEC 27, T7N, R6W, 3RD PM



EXIST. CURVE I55N-6
 PI STA. = 799+36.98
 $\Delta = 21^\circ 15' 10''$ (RT)
 $D = 1^\circ 00' 00''$
 $R = 5,729.58'$
 $T = 1,074.99'$
 $L = 2,125.28'$
 $E = 99.97'$
 $e = 2.8\%$
 P.C. STA. = 788+61.98
 P.T. STA. = 809+87.26

EQUATION:
 STA 809+87.26 BK =
 STA 161+08.45 AH



REVISIONS	
NAME	DATE

ILLINOIS DEPARTMENT OF TRANSPORTATION

PLAN SHEETS
 FAI 55
 SECTION D6 INTERMITTENT RS 2009
 MACOUPIN COUNTY

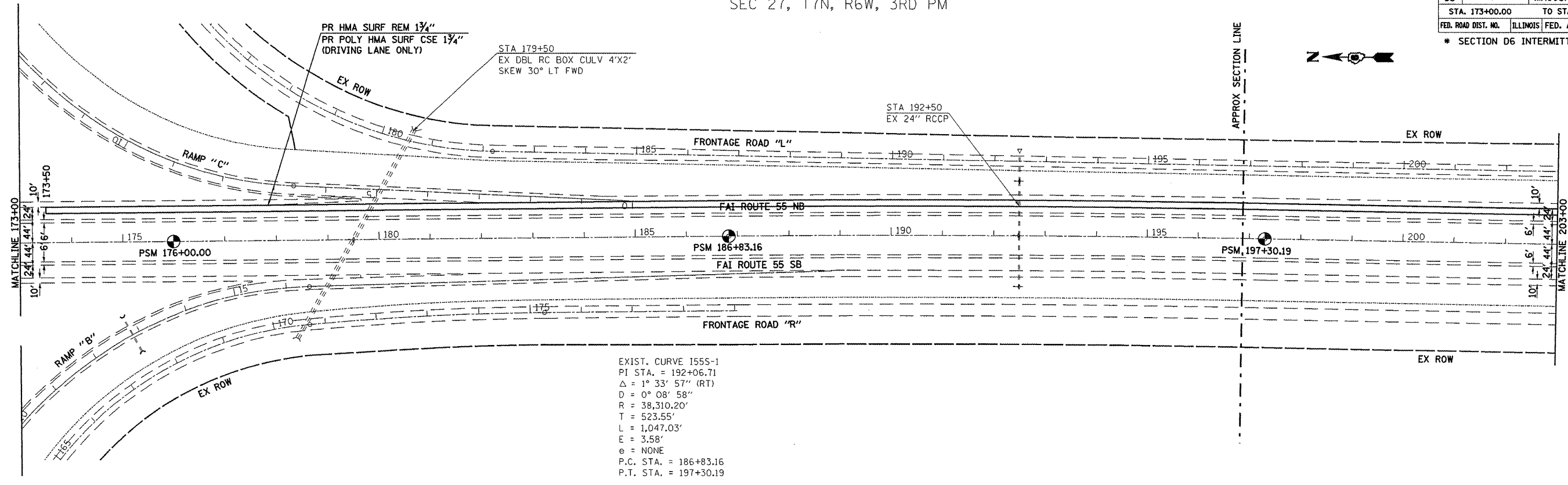
SCALE:
 DATE:

DRAWN BY
 CHECKED BY

CONTRACT 72C03

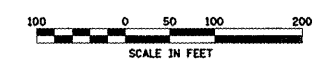
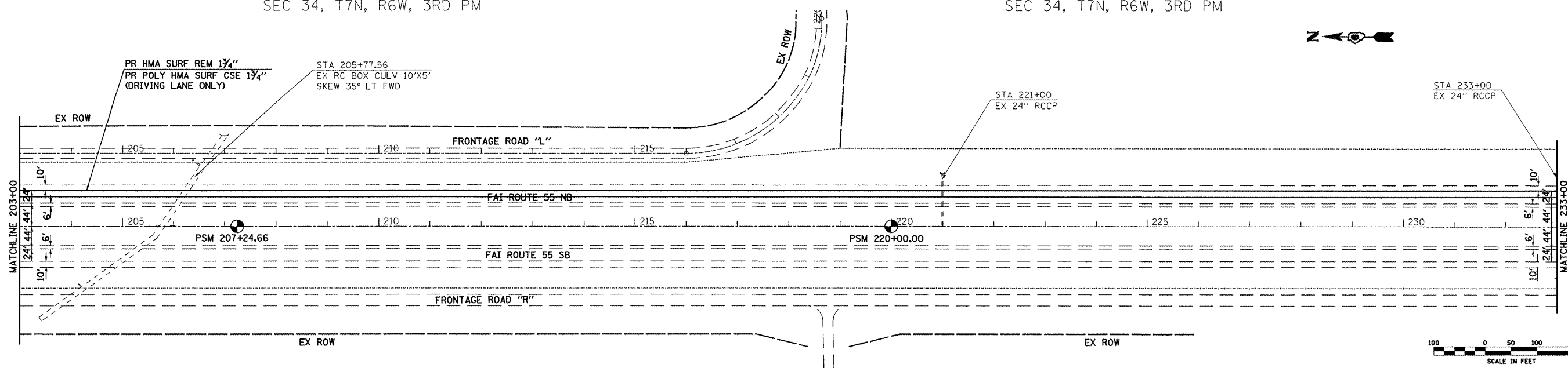
F.A.I. RTE.	SECTION	COUNTY	TOTAL SHEETS	SHEET NO.
55	*	MACOUPIN	18	15
STA. 173+00.00		TO STA. 233+00.00		
FED. ROAD DIST. NO.		ILLINOIS FED. AID PROJECT		
* SECTION D6 INTERMITTENT RS 2009				

SEC 27, T7N, R6W, 3RD PM



SEC 34, T7N, R6W, 3RD PM

SEC 34, T7N, R6W, 3RD PM



REVISIONS	
NAME	DATE

ILLINOIS DEPARTMENT OF TRANSPORTATION

PLAN SHEETS
FAI 55
SECTION D6 INTERMITTENT RS 2009
MACOUPIN COUNTY

SCALE: _____
DATE: _____

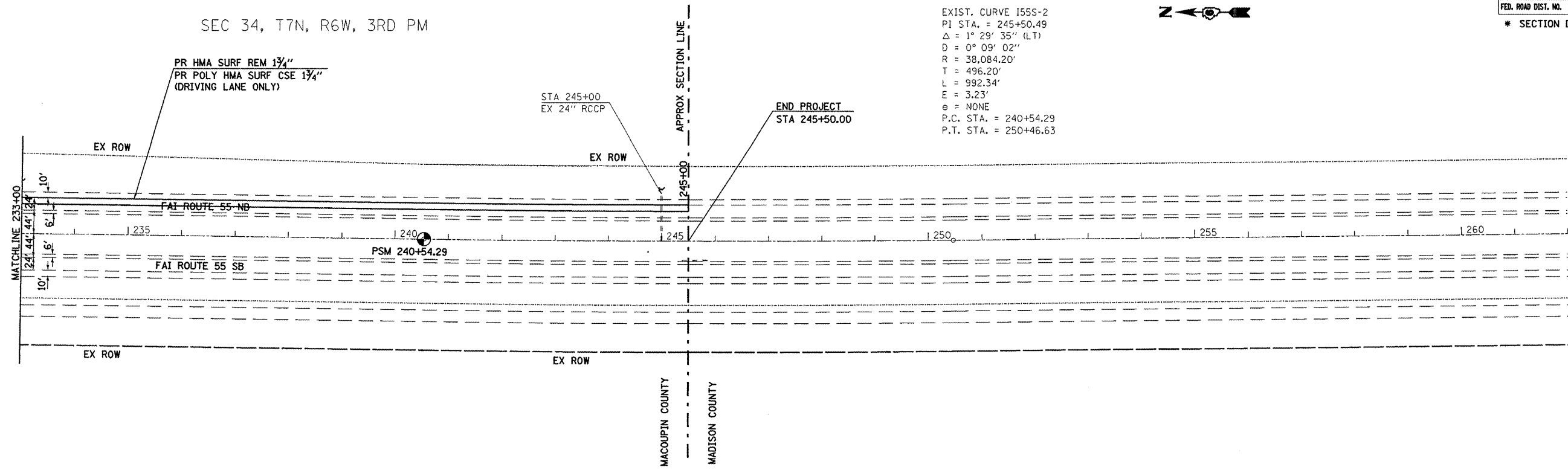
DRAWN BY _____
CHECKED BY _____

C:\projects\6572c03\sheet100.dgn
Apr-01-2009 07:13:11AM
*REFB1

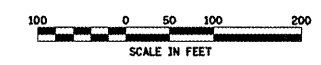
CONTRACT 72C03

F.A.I. RTE.	SECTION	COUNTY	TOTAL SHEETS	SHEET NO.
55	*	MACOUPIN	18	16
STA. 233+00.00		TO STA. 262+00		
FED. ROAD DIST. NO. ILLINOIS FED. AID PROJECT				
* SECTION D6 INTERMITTENT RS 2009				

SEC 34, T7N, R6W, 3RD PM



EXIST. CURVE 155S-2
 PI STA. = 245+50.49
 $\Delta = 1^\circ 29' 35''$ (LT)
 $D = 0^\circ 09' 02''$
 $R = 38,084.20'$
 $T = 496.20'$
 $L = 992.34'$
 $E = 3.23'$
 $e = \text{NONE}$
 P.C. STA. = 240+54.29
 P.T. STA. = 250+46.63



REVISIONS	
NAME	DATE

ILLINOIS DEPARTMENT OF TRANSPORTATION

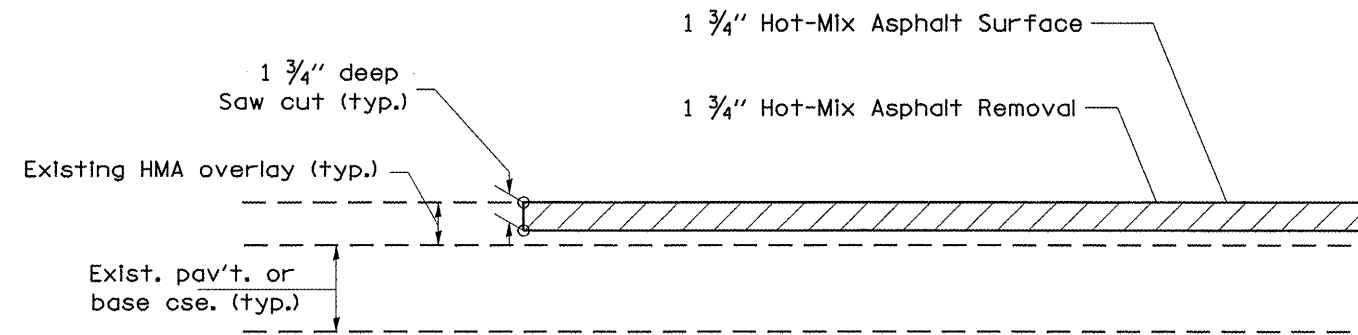
PLAN SHEETS
 FAI 55
 SECTION D6 INTERMITTENT RS 2009
 MACOUPIN COUNTY

SCALE: _____ DRAWN BY _____
 DATE: _____ CHECKED BY _____

C:\Projects\6672c03\sheets\00.dgn
 Apr-01-2008 07:36:20AM
 *REF:01

F.A.I. RTE.	SECTION	COUNTY	TOTAL SHEETS	SHEET NO.
55	*	MACOUPIN	18	17
STA.		TO STA.		
FED. ROAD DIST. NO.	ILLINOIS	FED. AID PROJECT		

• D6 INTERMITTENT RS 2009



BUTT JOINT DETAIL

NOTES:

THE SAW CUTS FOR BUTT JOINTS SHALL BE INCLUDED IN THE COST OF HOT-MIX ASPHALT SURFACE REMOVAL 1 3/4".

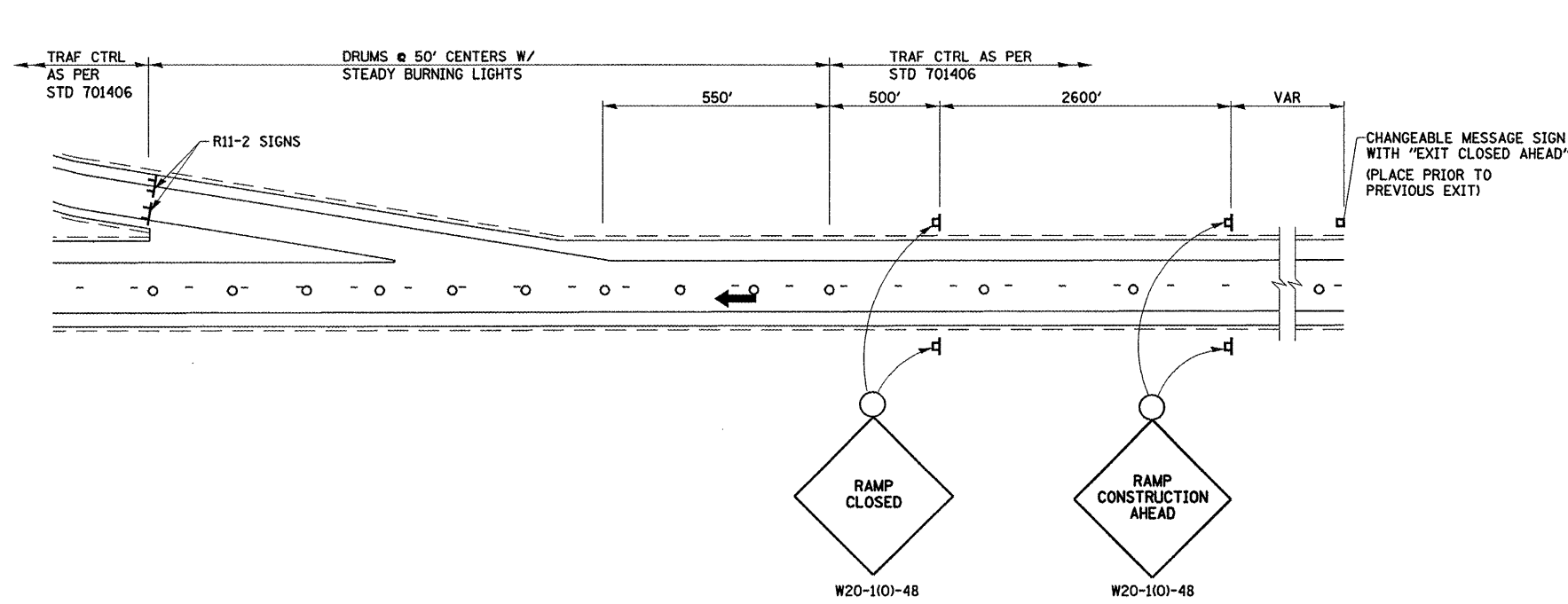
REVISIONS	
NAME	DATE

ILLINOIS DEPARTMENT OF TRANSPORTATION
BUTT JOINT DETAIL
 FAI 55
 SECTION D6 INTERMITTENT RS 2009
 MACOUPIN COUNTY
 SCALE: NOT DRAWN TO SCALE DRAWN BY
 DATE CHECKED BY

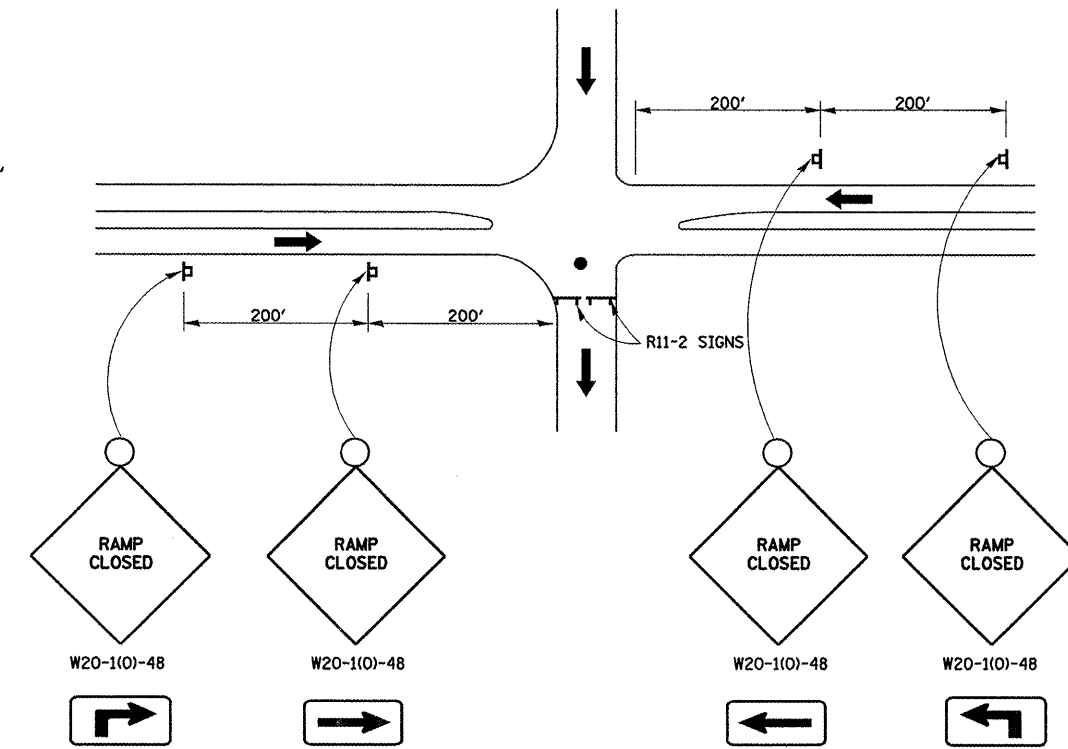
CONTRACT NO. 72C03

F.A.I. SECTION	COUNTY	TOTAL SHEETS	SHEET NO.
55	SANGAMON	18	18
STA. TO STA.			
FED. ROAD DIST. NO.		ILLINOIS FED. AID PROJECT	

• D6 INTERMITTENT RS 2009



EXIT RAMP CLOSURE DETAIL



ENTRANCE RAMP CLOSURE DETAIL

SYMBOLS

- SIGN ON PORTABLE OR PERMANENT SUPPORT
- ⌌ TYPE 3 BARRICADE
- CONE, DRUM, OR BARRICADE
- FLAGGER WITH TRAFFIC CONTROL SIGN
- ➔ TRAFFIC FLOW

NOTES

THIS DETAIL IS TO BE USED IN CONJUNCTION WITH STANDARDS 701406 AND 701400.

REVISIONS	
NAME	DATE

ILLINOIS DEPARTMENT OF TRANSPORTATION
TRAFFIC CONTROL &
PROTECTION FOR RAMPS
FAI 55 (I-55)
SECTION D6 INTERMITTENT RS 2009
MACOUPIN COUNTY

SCALE:
DATE

DRAWN BY
CHECKED BY

DATE = 04-28-09
FILE NAME = C:\Projects\72C03\72C03.dwg
PLOT SCALE = 1/8" = 1'-0"
USER NAME = baughman