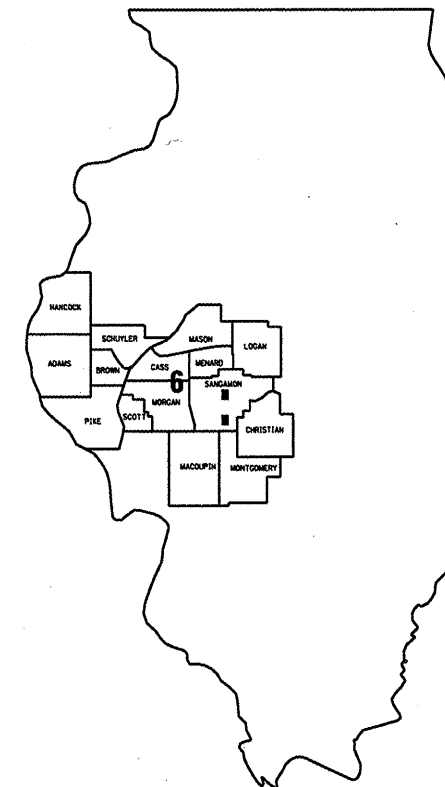


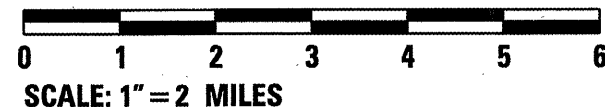
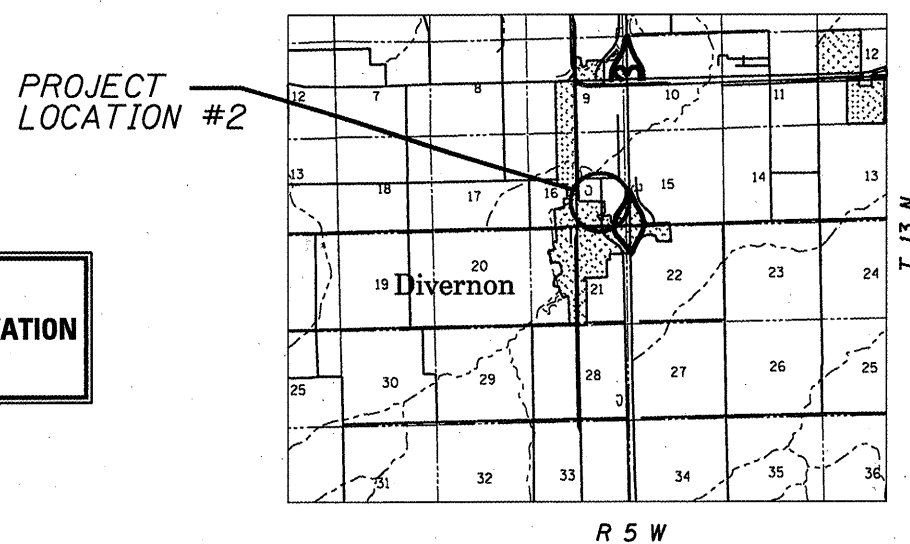
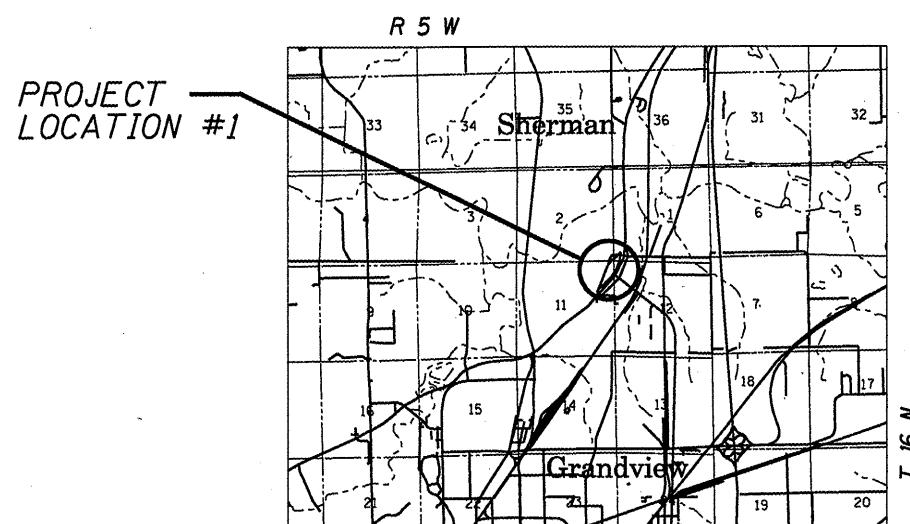
FOR INDEX OF SHEETS AND HIGHWAY  
STANDARDS, SEE SHEET 2.

STATE OF ILLINOIS  
DEPARTMENT OF TRANSPORTATION  
DIVISION OF HIGHWAYS

**PLANS FOR PROPOSED  
CONTRACT MAINTENANCE  
SBI ROUTE 24 (VARIOUS)  
SECTION D6 OIL & CHIP 2008  
SANGAMON COUNTY  
C96-076-08 / D96-076-08**



LOCATION OF SECTION INDICATED THUS: ■



**J. U. L. I. E.**  
**JOINT UTILITY LOCATION INFORMATION FOR EXCAVATION**  
1-800-892-0123

PLANS & CONTRACT TECHNICIAN: TIMOTHY SHARP  
PHONE: (217) 782-7743

**CONTRACT NO. 72C06**

STATE OF ILLINOIS  
DEPARTMENT OF TRANSPORTATION  
DIVISION OF HIGHWAYS

SUBMITTED April 1 2008

Christie M. Reed  
DEPUTY DIRECTOR OF HIGHWAYS, REGION FOUR ENGINEER

May 9 2008

Eric E. Harm  
ENGINEER OF DESIGN AND ENVIRONMENT

May 9 2008

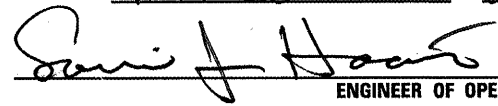
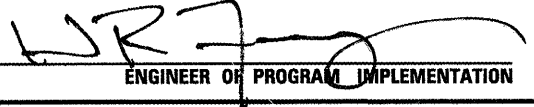

Christie M. Reed  
DIRECTOR, DIVISION OF HIGHWAYS

INDEX

- 1 COVER
- 2 INDEX/STANDARDS/SIGNATURES
- 3 QUANTITIES
- 4-5 LOCATION MAP
- 6 TYPICAL SECTIONS

STANDARDS

- 701001-01
- 701006-02
- 701011-01
- 701501-04
- 701901
- 780001-01

<b>STATE OF ILLINOIS DEPARTMENT OF TRANSPORTATION DIVISION OF HIGHWAYS DISTRICT 6</b>
EXAMINED <u>Mar 28</u> 20 <u>08</u>  ENGINEER OF OPERATIONS
EXAMINED <u>MAR 20</u> 20 <u>08</u>  ENGINEER OF PROGRAM IMPLEMENTATION
EXAMINED <u>Mar 24</u> 20 <u>08</u>  ENGINEER OF PROGRAM DEVELOPMENT

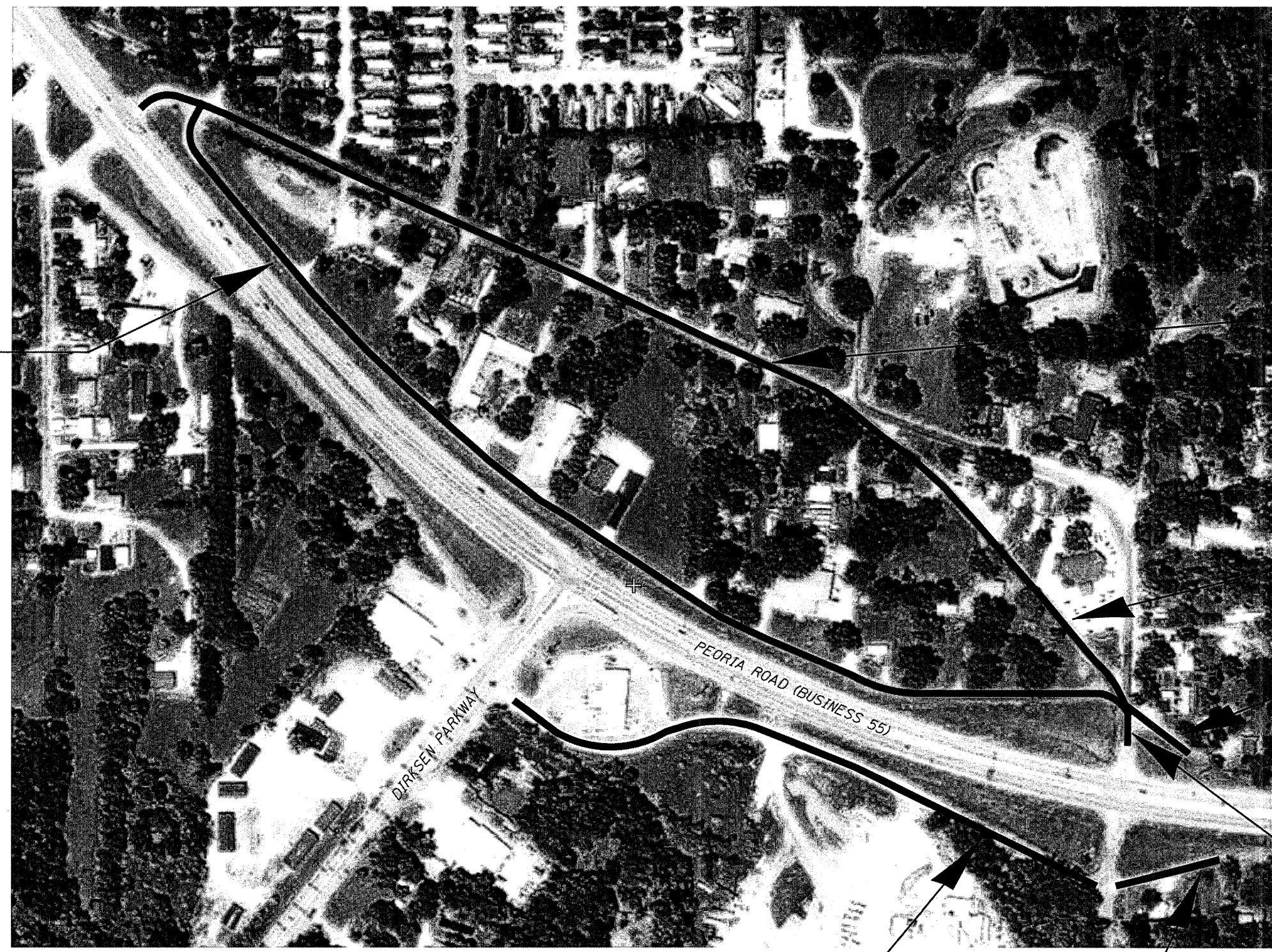
INDEX/STANDARDS/SIGNATURES  
SBI 24 (VARIOUS)  
SECTION D6 OIL & CHIP 2008  
SANGAMON COUNTY

S U M M A R Y O F Q U A N T I T I E S

CODE NO.	ITEM	UNIT	URBAN LOCATION #1	RURAL LOCATION #2	100% STATE
					F000
					TOTAL QTY
40300400	BITUMINOUS MATERIALS (COVER AND SEAL COATS)	TON	25.3	9.8	35.1
40300600	SEAL COAT AGGREGATE	TON	170.4	66	236.4
67100100	MOBILIZATION	L SUM	0.75	0.25	1
70102620	TRAFFIC CONTROL AND PROTECTION, STANDARD 701501	L SUM	0.75	0.25	1
70300100	SHORT-TERM PAVEMENT MARKING	FOOT	670	270	940
70301000	WORK ZONE PAVEMENT MARKING REMOVAL	SQ FT	253	90	343
* 78001120	PAINT PAVEMENT MARKING - LINE 5"	FOOT	1,660	660	2,320

\* SPECIALTY ITEMS

QUANTITIES  
SBI 24 (VARIOUS)  
SECTION D6 OIL & CHIP 2008  
SANGAMON COUNTY



CHINCHILLA  
LANE 2,345 FT  
18 FT WIDE

SANDHILL ROAD  
1,550 FT  
18 FT WIDE

JOHNS ROAD  
795 FT  
18 FT WIDE

JOHNS ROAD  
175 FT  
18 FT WIDE

SANDHILL ROAD  
1,550 FT  
18 FT WIDE

BACHMANN ROAD  
1,207 FT  
20 FT WIDE

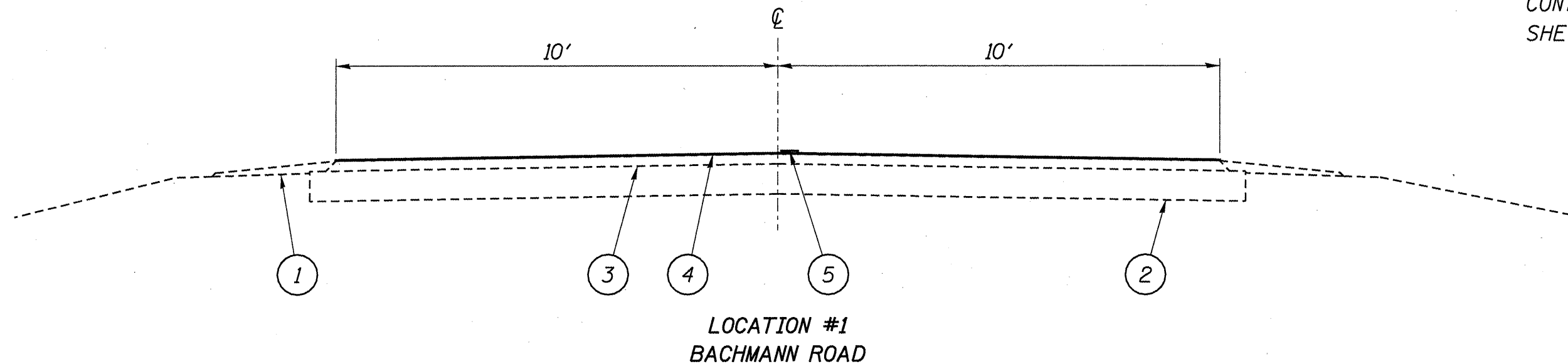
BACHMANN ROAD  
410 FT  
18 FT WIDE

LOCATION MAP  
SBI 24 (VARIOUS)  
SECTION D6 OIL & CHIP 2008  
SANGAMON COUNTY

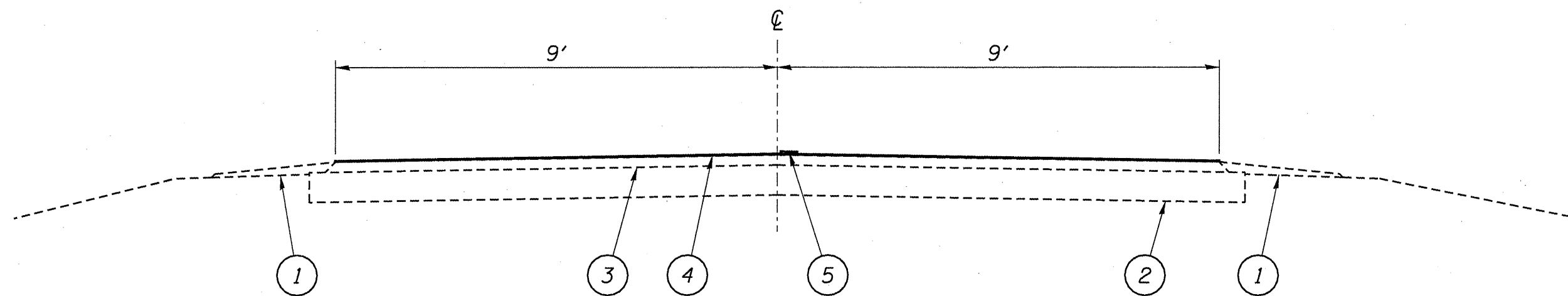


HENRIETTA STREET  
2640 FT  
18 FT WIDE

LOCATION MAP  
SBI 24 (VARIOUS)  
SECTION D6 OIL & CHIP 2008  
SANGAMON COUNTY



LOCATION #1  
BACHMANN ROAD



LOCATION #1  
SANDHILL ROAD  
JOHNS ROAD  
CHINCHILLA LANE  
BACHMANN ROAD  
LOCATION #2  
HENRIETTA ROAD

**LEGEND**

- 1 - EXIST. AGGREGATE SHOULDERS, TYPE B
- 2 - EXIST. STABILIZED OR CONCRETE BASE COURSE
- 3 - EXIST. BITUMINOUS SURFACE
- 4 - PROP. BITUMINOUS SURFACE TREATMENT (CLASS A-1)
- 5 - PROP. PAINT PAVEMENT MARKING - LINE 5"

TYPICALS  
SBI 24 (VARIOUS)  
SECTION D6 OIL & CHIP 2008  
SANGAMON COUNTY