

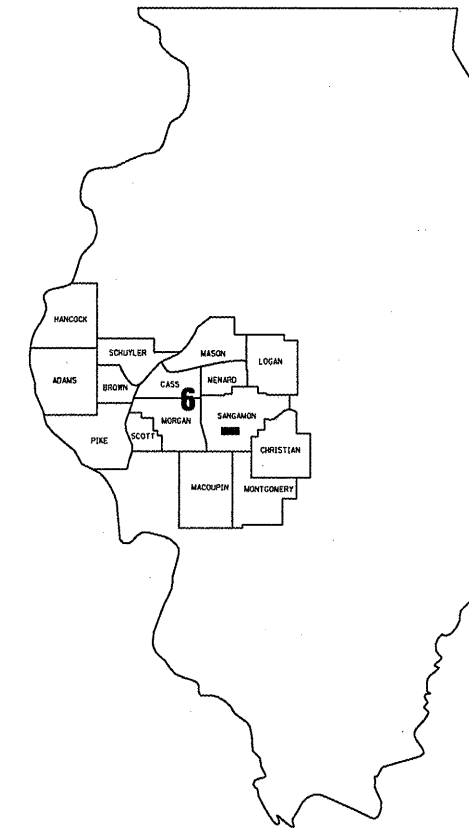
STATE OF ILLINOIS  
 DEPARTMENT OF TRANSPORTATION  
 DIVISION OF HIGHWAYS

CONTRACT: 72C11  
 SHEET 1 OF 7

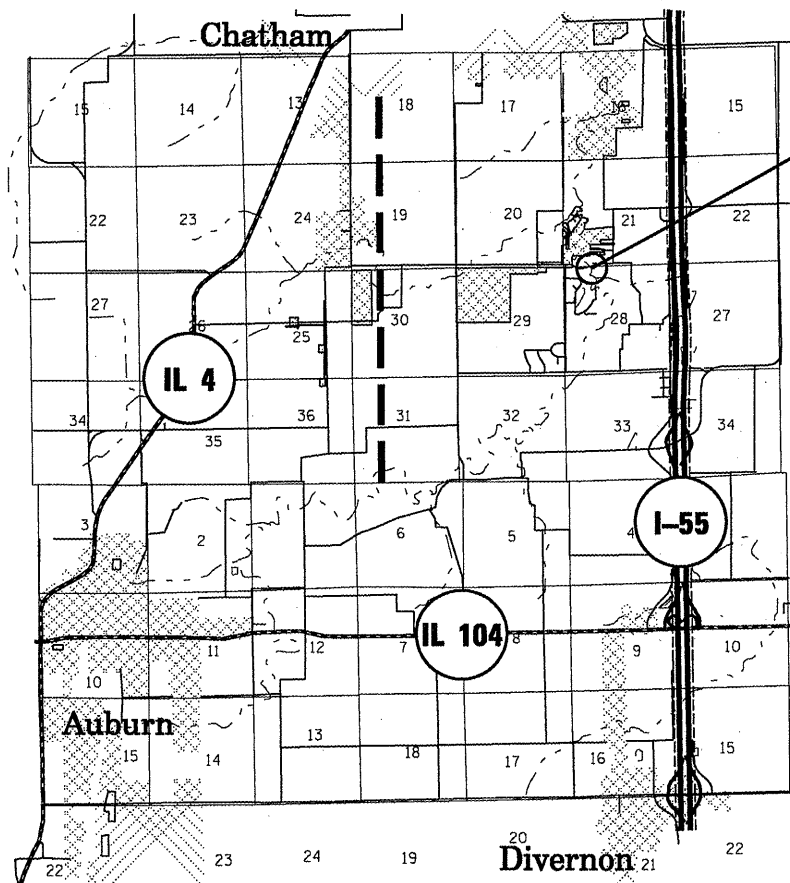
PLANS FOR PROPOSED IMPROVEMENT

COVERED BRIDGE ROAD  
 SECTION D6 COV BR PLANK REM & REPL  
 C-96-085-08 / D-96-085-08  
 SANGAMON COUNTY

PROJECT: NHCB-000S(593)



LOCATION OF SECTION INDICATED THUS: ■



SN 084-0114

NET LENGTH OF SEC 195 FT=0.04 MILE

J. U. L. I. E.  
 JOINT UTILITY LOCATION INFORMATION FOR EXCAVATION  
 1-800-892-0123

BRIDGE INSPECTION ENGINEER: DAVE COPENBARGER  
 PHONE: (217) 785-5306

CONTRACT NO. 72C11

STATE OF ILLINOIS  
 DEPARTMENT OF TRANSPORTATION  
 DIVISION OF HIGHWAYS

SUBMITTED April 9, 2008

*Christine M. Reed*  
 DEPUTY DIRECTOR OF HIGHWAYS, REGION FOUR ENGINEER

May 9, 2008  
*Eric E. Harney*  
 Interim ENGINEER OF DESIGN AND ENVIRONMENT

May 9, 2008  
*Christine M. Reed*  
 DIRECTOR, DIVISION OF HIGHWAYS

PRINTED BY AUTHORITY OF THE STATE OF ILLINOIS

**INDEX OF SHEETS**

- 1 COVER SHEER
- 2 SIGNATURES /GENERAL NOTES
- 3 SUMMARY OF QUANTITIES
- 4 MATERIAL SCHEDULES
- 5-6 APPROACH DETAILS
- 7 BEARING DETAILS

**STANDARDS**

701001-01

**GENERAL NOTES**

PLAN DIMENSIONS AND DETAILS RELATIVE TO EXISTING PLANS ARE SUBJECT TO ROUTINE VARIATIONS. THE CONTRACTOR SHALL FIELD VERIFY EXISTING DIMENSIONS AND DETAILS AFFECTING NEW CONSTRUCTION AND MAKE NECESSARY APPROVED ADJUSTMENTS PRIOR TO CONSTRUCTION OR ORDERING OF MATERIALS. SUCH VARIATIONS SHALL NOT BE CAUSE FOR ADDITIONAL COMPENSATION FOR A CHANGE IN SCOPE OF THE WORK, HOWEVER, THE CONTRACTOR WILL BE PAID FOR THE QUANTITY ACTUALLY FURNISHED BASED UPON THE UNIT PRICE BID FOR THE WORK.

THE ORGANIC ZINC RICH PRIMER/EPOXY/URETHANE PAINT SYSTEM SHALL BE USED FOR PAINTING OF NEW STRUCTURAL STEEL EXCEPT WHERE OTHERWISE NOTED. THE ENTIRE SYSTEM SHALL BE SHOP APPLIED, WITH THE EXCEPTION THAT MASKED OFF CONNECTION SURFACES, FIELD INSTALLED FASTENERS AND DAMAGED AREAS SHALL BE TOUCHED UP IN THE FIELD. THE COLOR OF THE FINAL FINISH COAT SHAL BE REDDISH BROWN, MUNSELL NO 2.5YR 3/4.

LOAD CARRYING COMPONENTS DESIGNATED "NTR" SHALL CONFORM TO THE SUPPLEMENTAL REQUIREMENTS FOR NOTCH TOUGHNESS, ZONE 2.

COST OF REMOVAL AND RE-INSTALLATION OF ALL STEEL MEMBERS NECESSARY TO COMPLETE THE WORK AS DETAILED ON THE PLANS AND AS SPECIFIED IN THE SPECIAL PROVISIONS SHALL BE INCLUDED WITH FURNISHING AND ERECTING STRUCTURAL STEEL.

<b>STATE OF ILLINOIS DEPARTMENT OF TRANSPORTATION DIVISION OF HIGHWAYS DISTRICT 6</b>	
EXAMINED	April 8 20 08 <i>[Signature]</i> ENGINEER OF OPERATIONS
EXAMINED	April 9 20 08 <i>[Signature]</i> ENGINEER OF PROGRAM IMPLEMENTATION
EXAMINED	April 9 20 08 <i>[Signature]</i> ENGINEER OF PROGRAM DEVELOPMENT

GENERAL NOTES / SIGNATURES  
SUGAR CREEK COVERED BRIDGE  
D6 COV BR PLANK REM & REPL  
SANGAMON COUNTY



**TIMBER BILL OF MATERIAL (APPROACHES)**

MEMBER	DESCRIPTION	NUMBER	SIZE	MATERIAL
a <sub>1</sub>	Floor Planks	242	2"x6"x15'-0"	Red Oak
a <sub>2</sub>	Floor Planks	22	2"x6"x17'-0"	Red Oak
*b <sub>3</sub>	Block - Out	20	4"x6"x6'-0"	Red Oak
* See	p5 for wood block-out details			
v <sub>1</sub>	Vertical Posts	44	4"x6"x3'-4"	Red Oak
v <sub>2</sub>	Diagonal Brace	88	2"x6"x4'-0"	Red Oak
h <sub>1</sub>	Rail Planks	64	2"x6"x12'-6"	Red Oak
h <sub>2</sub>	Rail Planks	48	2"x6"x6'-6"	Red Oak
h <sub>3</sub>	Brush Block	16	4"x6"x12'-6"	Red Oak
h <sub>4</sub>	Brush Block	12	4"x6"x6'-6"	Red Oak
h <sub>5</sub>	Spacer Block	48	1"x6"x1'-6"	Red Oak
h <sub>6</sub>	Facia Board	20	1"x12"x12'-6"	Red Oak
h <sub>7</sub>	Facia Board	4	1"x12"x6'-6"	Red Oak
h <sub>8</sub>	Facia Board	4	1"x6"x6'-6"	Red Oak

**STEEL BILL OF MATERIAL (APPROACHES)**

DESCRIPTION	NUMBER	SIZE	LOCATION	LB PER	TOTAL LB	MATERIAL
W10x30 Beam	4	29'11"	Short Spans	900	3600	Steel
W10x45 Beam	4	36'	Long Spans	1620	6480	Steel
L 3-3/4x3x1/2	16	6"	Piers 1 & 4	10.68	170.9	Steel
Tapered 9x4 PL	4	See Detail on p6	Piers 1 & 4	9.25	37.0	Steel
Tapered 6-3/4x4 PL	2	See Detail on p6	East Abut.	6.94	13.9	Steel
Tapered 6-3/4x4 PL	2	See Detail on p6	West Abut.	7.90	15.8	Steel
Tapered Fill PL	12	See Detail on p6	Piers 1 & 4, W Abut.	2.01	24.1	Steel
Tapered Fill PL	4	See Detail on p6	E Abut.	1.67	6.7	Steel
8x9 PL	4	8"x9"x1"	Piers 1 & 4	20.42	81.7	Steel
8x6-3/4 PL	4	8"x6-3/4"x1"	Abutments	15.31	61.2	Steel
Tapered 6-3/4x8 PL	2	See Detail on p6	Pier 1	20.10	40.2	Steel
Tapered 6-3/4x8 PL	2	See Detail on p6	Pier 4	16.75	33.5	Steel
Tapered 9x8 PL	4	See Detail on p6	Piers 2 & 3	22.33	89.3	Steel
SHIM PL	4	8"x9"x1/8"	Piers 1 & 4	NA	NA	Steel
Fabric Pad	8	8"x9"x1/4"	Piers 1 & 4	NA	NA	Fabric
Shim Plate	4	6 3/4"x 8"x 1/8"	Abutments	NA	NA	Steel
				Total:	10655	

Notes:

Shown are the actual dimensions of structural timber to be used. Nominal sizes will not be permitted.

All timber pieces shall be rough cut, treated red oak treated per Article 1007.12 of the standard specs.

All timbers in this schedule and all fasteners necessary for construction shall be paid for as Timber Deck Replacement - Lump Sum

Fasteners for Timber:

All fasteners used with treated wood products shall be stainless steel according to article 1006.29(d) or hot-dipped galvanized according to AASHTO M 232, Class C, except the minimum weight of zinc coating shall be 2.0 oz/sqft

Design Stresses for Timber:

$f_b = 1,050$  psi (red oak grade #2. 2" to 4" thick. 5" & wider)  
 $f_b = 1,150$  psi (red oak, grade #1. Beams and Stringers)

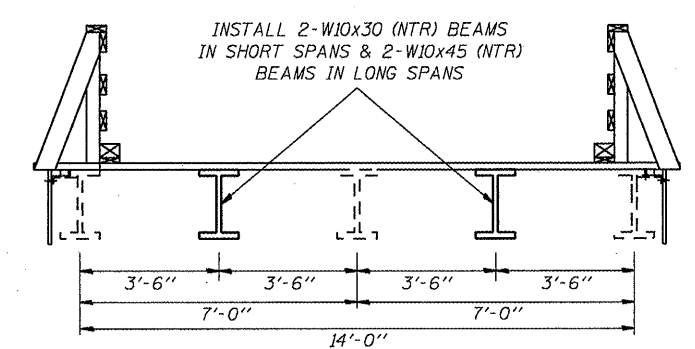
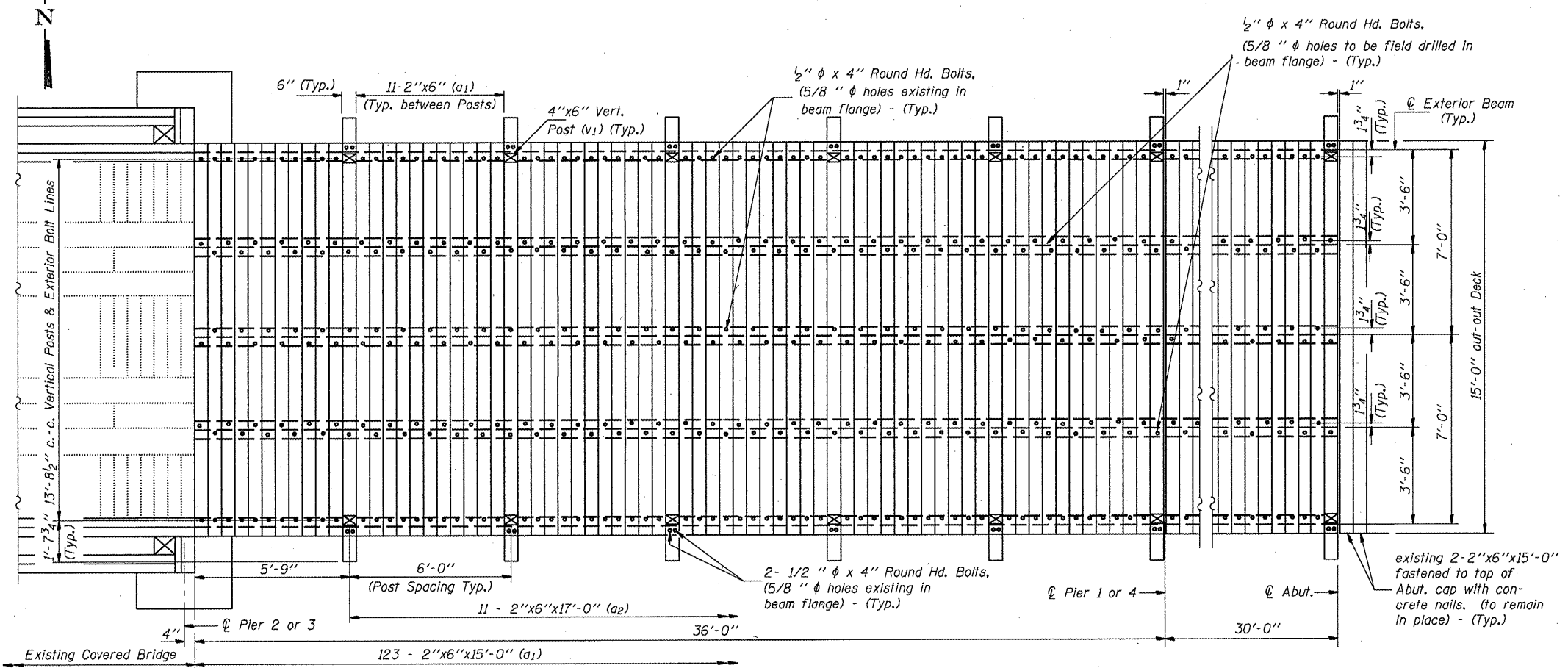
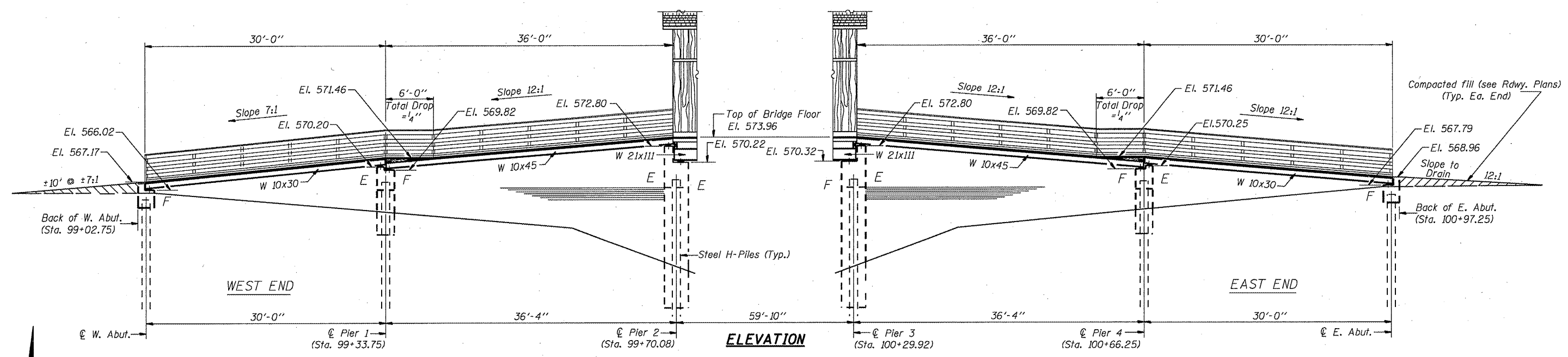
Notes:

Beam and plate sizes shall be field verified prior to ordering steel.

The cost of the bearing plates and fabric pads shall be included in the price for Furnishing and Erecting Structural Steel.

All structural steel shall conform to AASHTO classification M-270, Grade 50, unless otherwise noted.

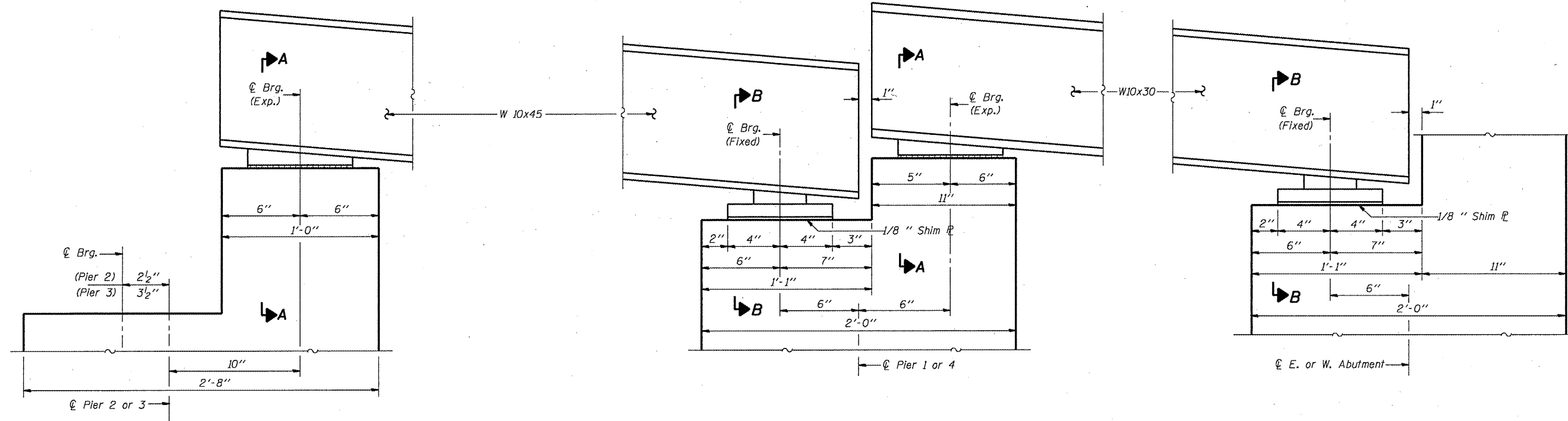
MATERIAL SCHEDULES  
SUGAR CREEK COVERED BRIDGE  
D6 COV BR PLANK REM & REPL  
SANGAMON COUNTY



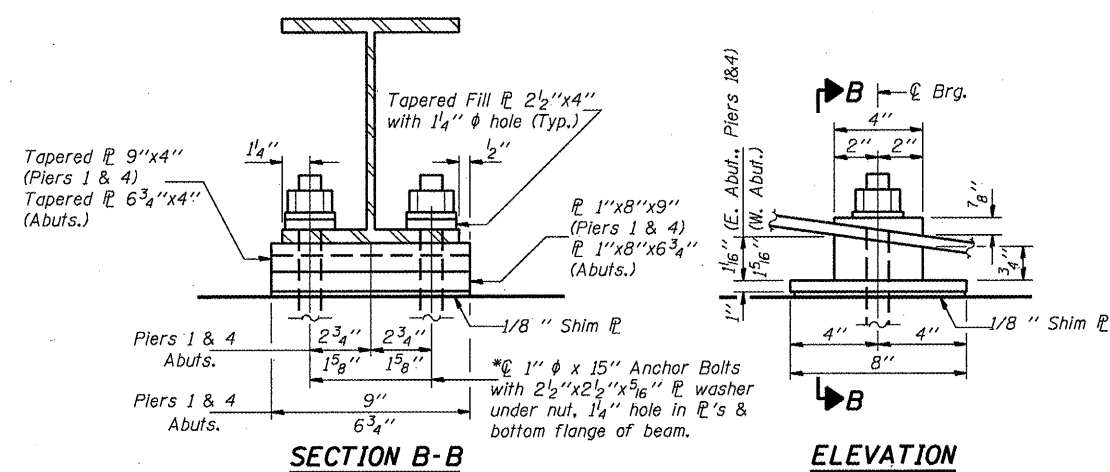
- Notes:**
1. See Sheet 6 for rail details.
  2. Structural timber designated ( ), represents member designation. See Bill of Material (Approaches) Sheet 4 of 6.
  3. Structural timber indicated thus, 6x11-2"x12"x6'-0" indicates 6 lines of timber with 11 lengths per line.
  4. All holes shall be field drilled.
  5. All Round headed bolts shall have minimum head diameter of 1 1/2".
  6. Timber members must be cut-to-fit as needed.
  7. Structural timber shall be rough sawn and treated.
  8. See Sheet 4 for bill of materials.
  9. All timbers shall be replaced in kind with the exception of the wheel lane runners which shall be permanently removed.
  10. Load carrying components designated "NTR" shall conform to the supplemental requirements for notch toughness, zone 2.

**APPROACH DETAILS**  
SUGAR CREEK COVERED BRIDGE  
D6 COV BR PLANK REM & REPL  
SANGAMON COUNTY



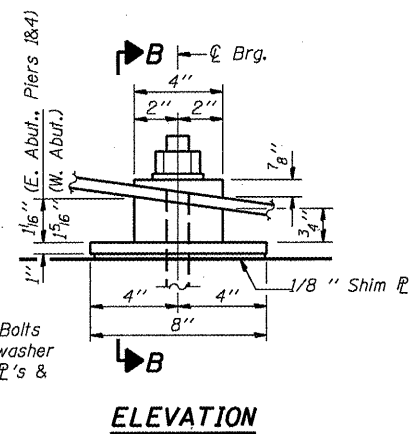


**BEARING LAYOUT**

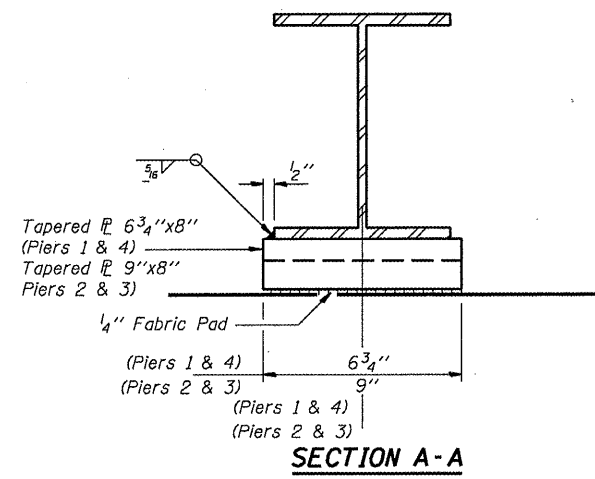


**SECTION B-B  
FIXED BEARING**

Note:  
Shim Plates 1/8"x8"x9" (piers 1 & 4)  
Shim Plates 1/8"x8"x6 3/4" (abutments)

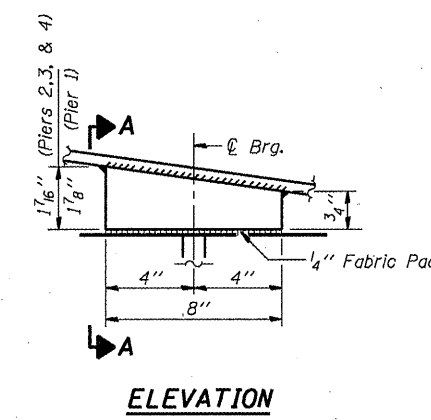


**ELEVATION**



**SECTION A-A  
EXPANSION BEARING**

Note:  
Steel quantities for bearings are included in the bill of material on p4



**ELEVATION**

**BEARING DETAILS  
SUGAR CREEK COVERED BRIDGE  
D6 COV BR PLANK REM & REPL  
SANGAMON COUNTY**