

F.A.I. RTE.	SECTION	COUNTY	TOTAL SHEETS	SHEET NO.
7978 D6	D6	BIDGE SANGAMON	10	1

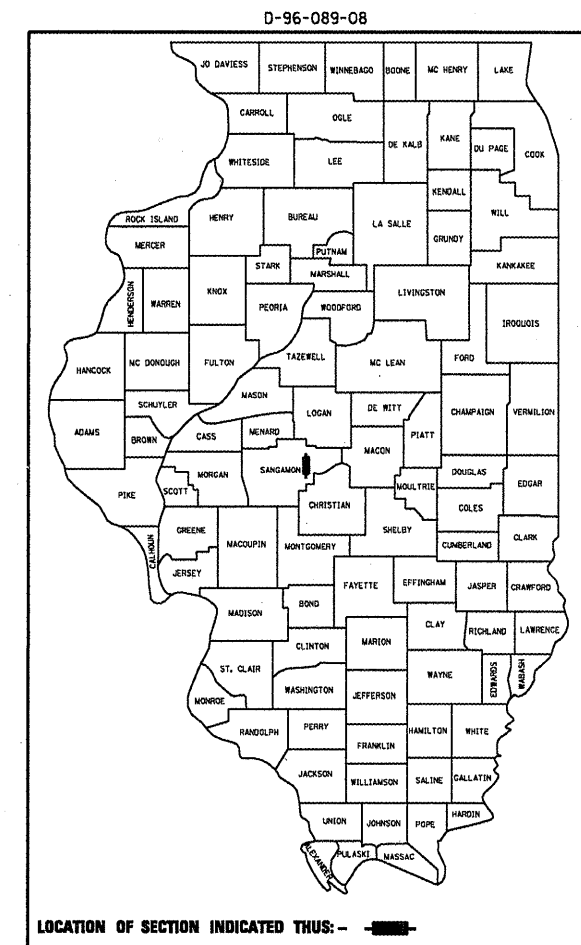
STATE OF ILLINOIS
DEPARTMENT OF TRANSPORTATION
DIVISION OF HIGHWAYS
**PROPOSED
HIGHWAY PLANS**
FAU 7978 (OLD US 36)
SECTION - D6 BRIDGE PAINTING 2008-02

FOR INDEX OF SHEETS, SEE SHEET NO. 2



SANGAMON COUNTIES

C-96-089-08



LOCATION OF SECTION INDICATED THUS: - [black rectangle] -

BRIDGE ENGINEER
STEVE BERAN- (217) 785-9290

BRIDGE INSPECTION ENGINEER
DAVE COPENBARGER - (217) 785-5306

J.U.L.I.E.
JOINT UTILITY LOCATION INFORMATION FOR EXCAVATION
1-800-892-0123

CONTRACT NO. 72C15

NET LENGTH OF SECTION: 778' = .14 MI

SN 084-0052

STATE OF ILLINOIS
DEPARTMENT OF TRANSPORTATION
DIVISION OF HIGHWAYS

SUBMITTED *April 23, 2008*
[Signature]
DEPUTY DIRECTOR OF HIGHWAYS, REGION ENGINEER

May 9, 2008
[Signature]
ENGINEER OF DESIGN AND ENVIRONMENT

May 9, 2008
[Signature]
DIRECTOR OF HIGHWAYS, CHIEF ENGINEER

PRINTED BY THE AUTHORITY
OF THE STATE OF ILLINOIS

INDEX OF SHEETS

- 1 COVER SHEET
- 2 INDEX, GENERAL NOTES, & SIGNATURES
- 3 SUMMARY OF QUANTITIES
- 4-10 EXISTING STRUCTURE PLANS

STANDARDS

701001-01
701006-02
701201-02
701901

STATE OF ILLINOIS DEPARTMENT OF TRANSPORTATION DIVISION OF HIGHWAYS DISTRICT 6	
EXAMINED <u>April 22</u> 20 <u>08</u>	<u>Sam J. Haines</u> ENGINEER OF OPERATIONS
EXAMINED <u>April 23</u> 20 <u>08</u>	<u>WRJ</u> ENGINEER OF PROGRAM IMPLEMENTATION
EXAMINED <u>April 23</u> 20 <u>08</u>	<u>WRJ</u> ENGINEER OF PROGRAM DEVELOPMENT

GENERAL NOTES

CLEANING AND PAINTING OF THE EXISTING STRUCTURAL STEEL SHALL BE AS SPECIFIED IN THE SPECIAL PROVISIONS FOR "CLEANING AND PAINTING EXISTING STEEL STRUCTURES". ALL SURFACES OF BOTH FASCIA BEAMS SHALL BE CLEANED AND PAINTED IN THEIR ENTIRITY. ALL STRUCTURAL STEEL LOCATED 10' EACH WAY FROM ALL EXPANSION JOINTS SHALL BE CLEANED AND PAINTED, EXCEPT NEW STEEL RECENTLY INSTALLED. ALL EXISTING STRUCTURAL STEEL SPECIFIED TO BE CLEANED AND PAINTED, SHALL BE CLEANED PER NEAR WHITE BLAST CLEANING - SSPC-SP10. ALL EXISTING STEEL SPECIFIED TO BE CLEANED AND PAINTED SHALL BE PAINTED ACCORDING TO THE REQUIREMENTS OF PAINT SYSTEM 1 - OZEU.
THE COLOR OF THE FINAL FINISH COAT FOR ALL STEEL SURFACES SHALL BE GRAY,MUNSELL NO 5B 7/1.

THE SSPC-QP-1 AND SSPC-QP2 PAINTING CONTRACTOR CERTIFICATIONS WILL BE REQUIRED FOR THIS BRIDGE.
THE USE OF AIR MONITORS WILL BE REQUIRED.

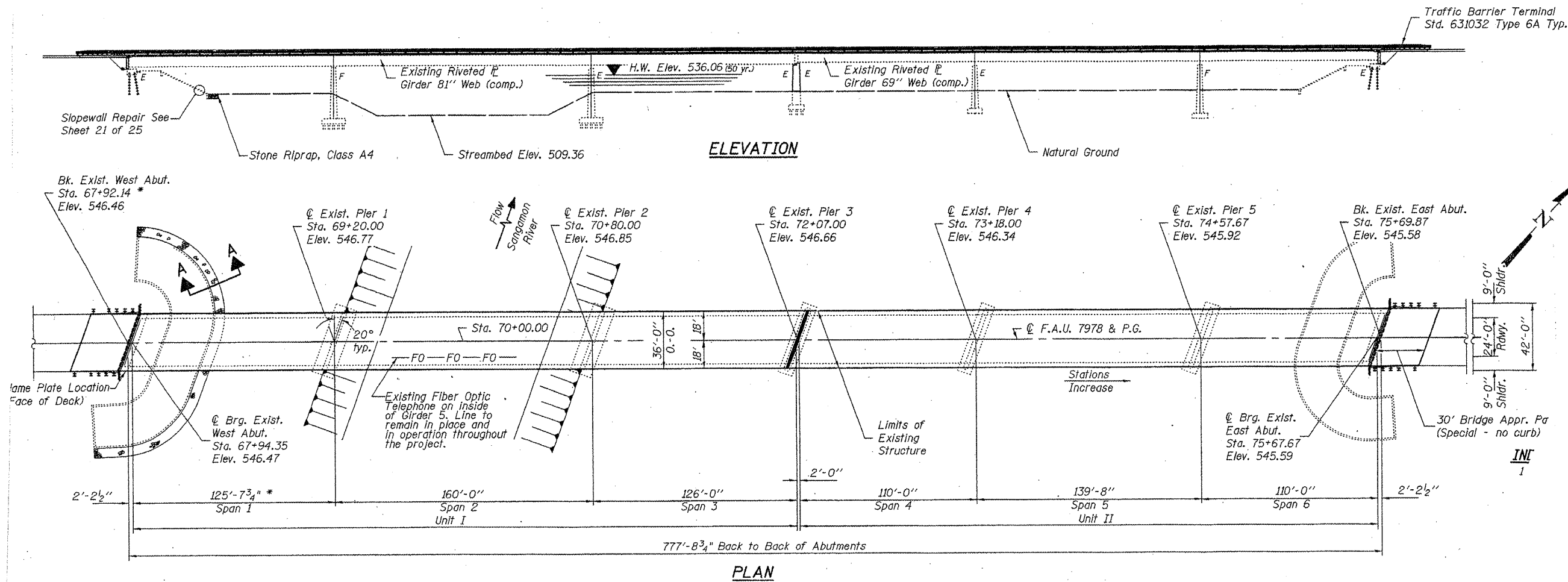
C-06-089-08
INDEX, GENERAL
NOTES, & SIGNATURES

Rev.

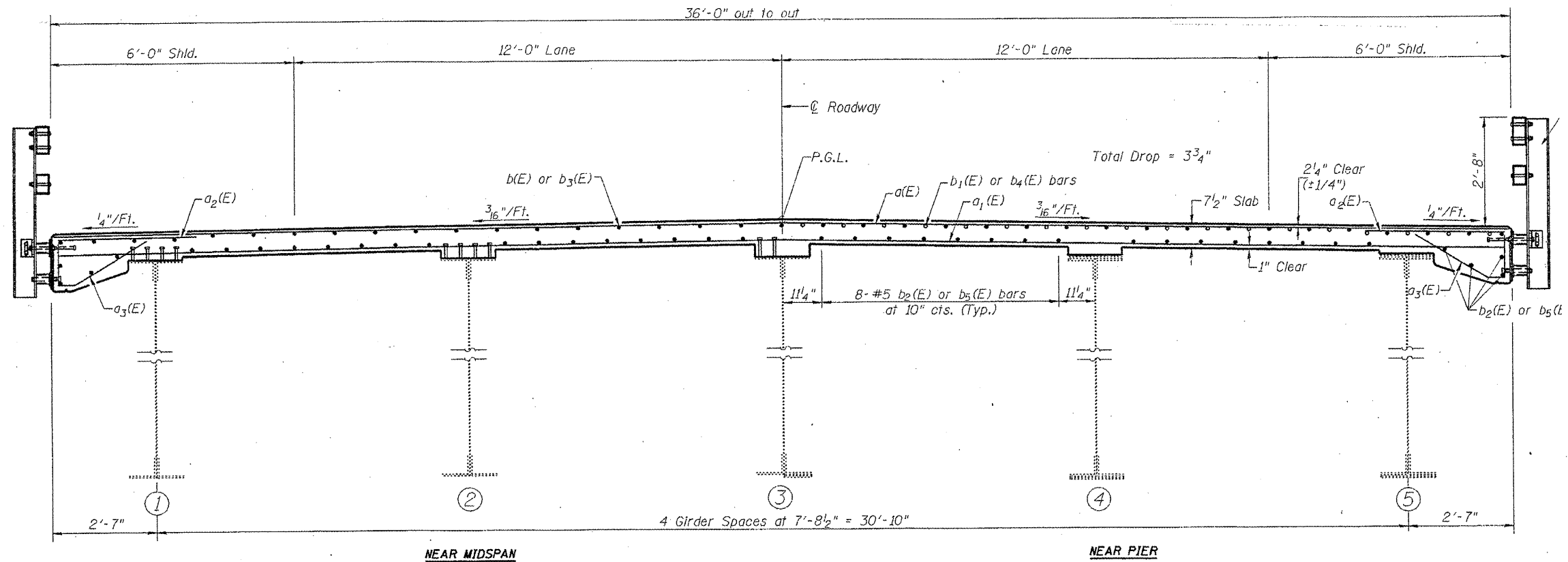
SUMMARY OF QUANTITIES				URBAN 100% STATE SANGAMON	
ITEM #	DESCRIPTION	UNIT	QUANTITY	SFTY-2A	
70100450	TRAFFIC CONTROL AND PROTECTION, STANDARD 701201	L SUM	1	1	
50600600	CLEANING AND PAINTING STEEL BRIDGE NO. 1	L SUM	1	1	
50606400	CONTAINMENT AND DISPOSAL OF LEAD PAINT CLEANING RESIDUES	L SUM	1	1	
67100100	MOBILIZATION	L SUM	1	1	

C-06-089-08
SUMMARY OF QUANTITIES

Rev.

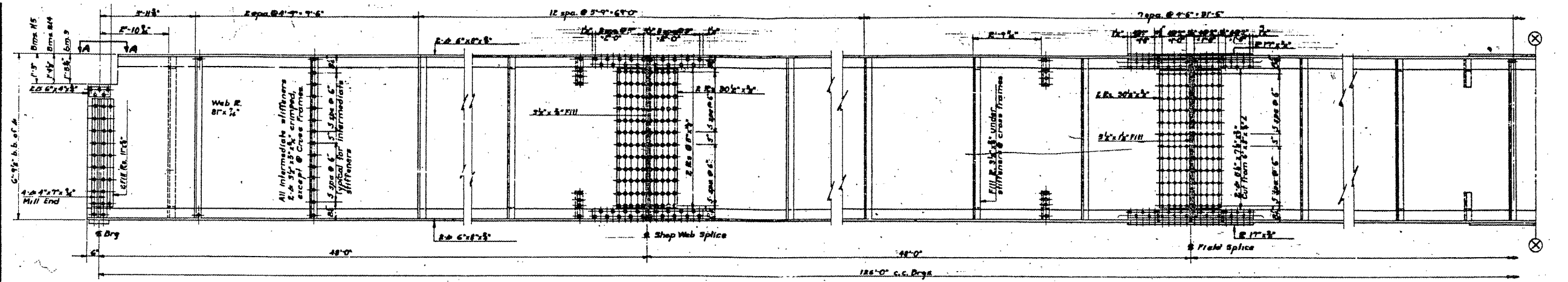


C-06-089-08
 SN 084-0052
 EXISTING BRIDGE PLANS
 FOR INFORMATION ONLY
 (NOT TO SCALE)

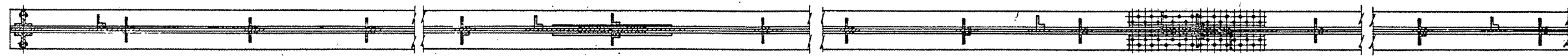


CROSS SECTION
(Looking East)

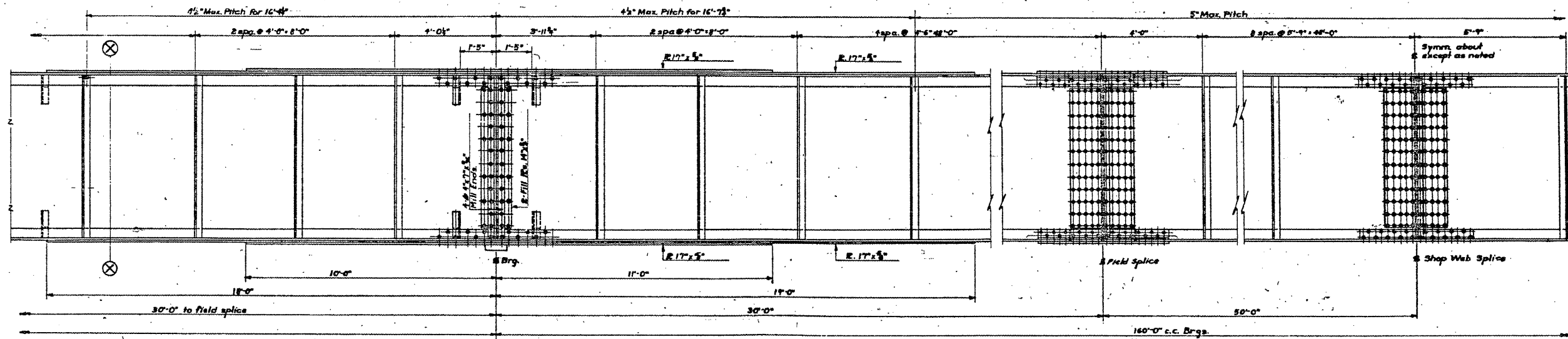
C-06-089-08
SN 084-0052
EXISTING BRIDGE PLANS
FOR INFORMATION ONLY
(NOT TO SCALE)



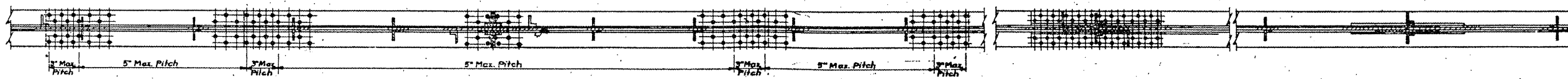
ELEVATION



PLAN OF BOTTOM FLANGE



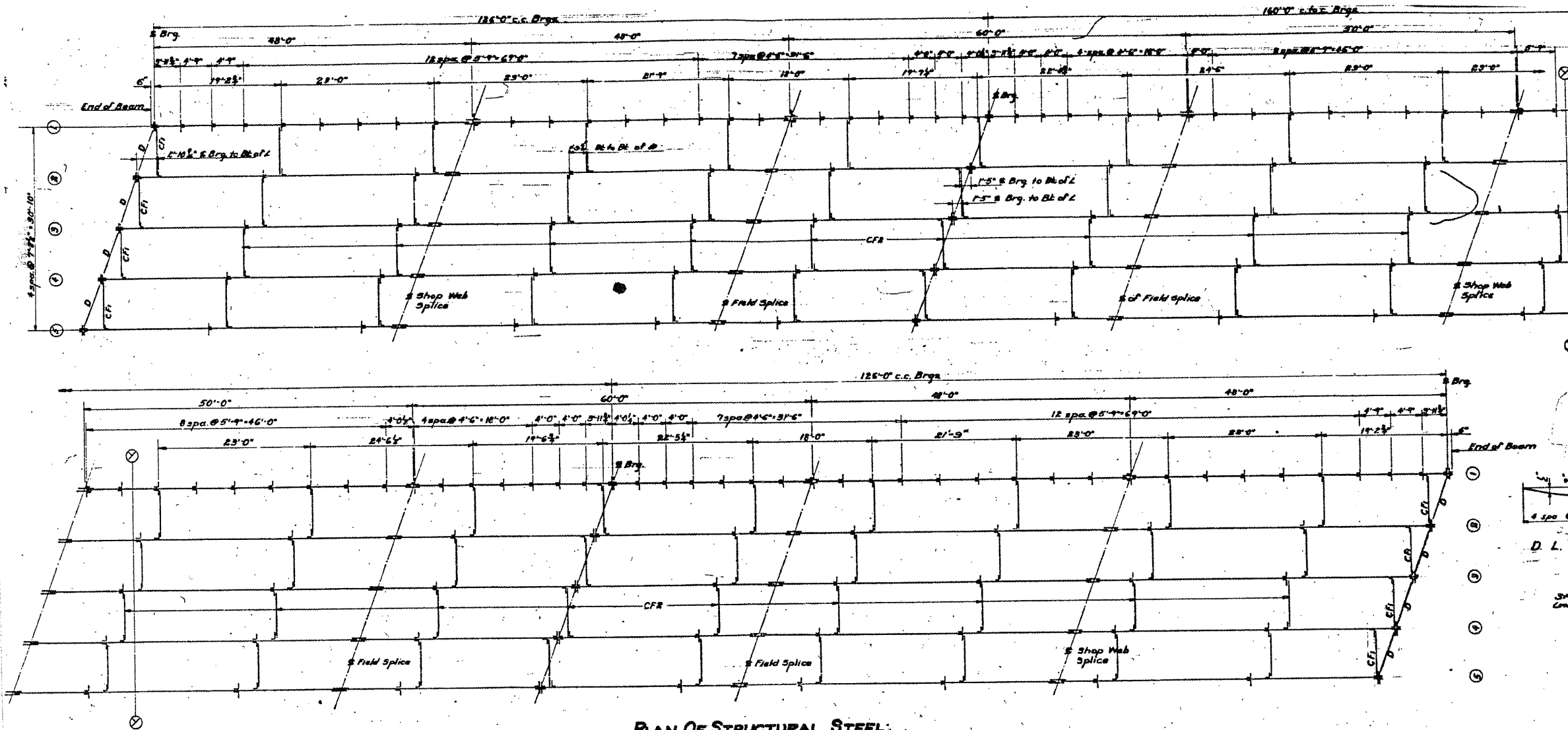
ELEVATION



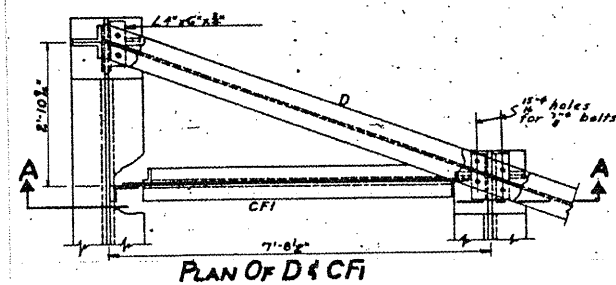
PLAN OF BOTTOM FLANGE

UNIT I
SANSAMON RIVER BRIDGE
S. KA. RT. 49 Sec. 19 B-F
SANSAMON COUNTY
STATION 70+00

C-06-089-08
SN 084-0052
EXISTING BRIDGE PLANS
FOR INFORMATION ONLY
(NOT TO SCALE)



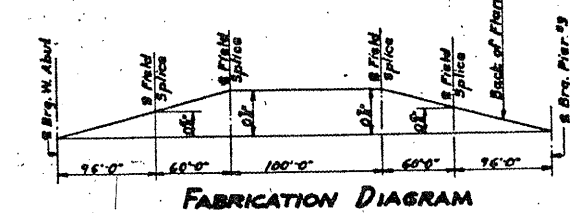
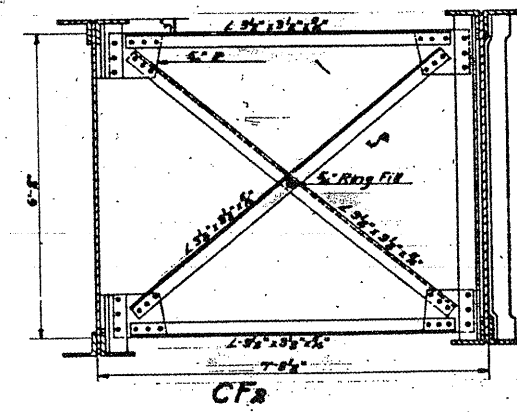
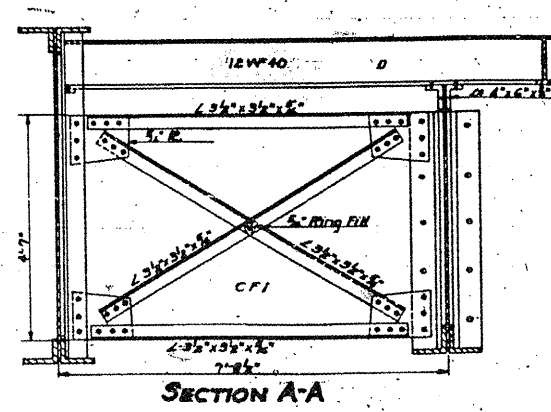
PLAN OF STRUCTURAL STEEL



DESIGNED *M. J. Rice*
CHECKED *W. E. Hanson*
DRAWN *M. J. Rice*
CHECKED *W. E. Hanson*

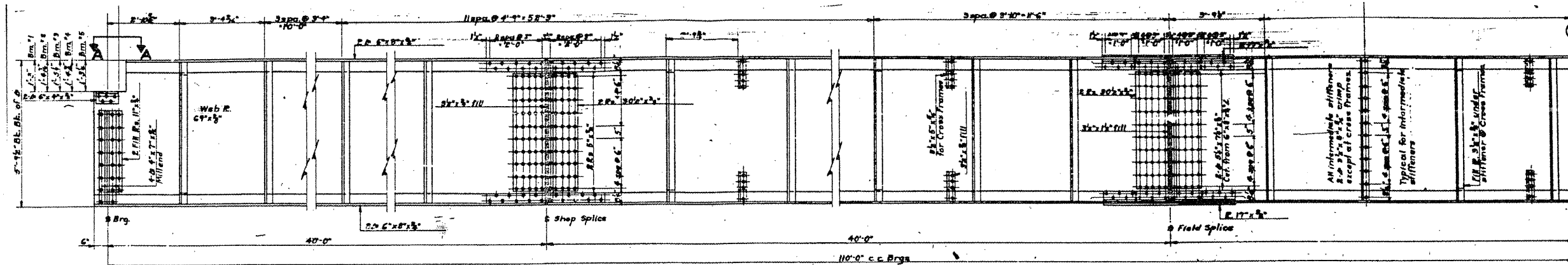
EXAMINED *W. E. Hanson*
PASSED *W. E. Hanson*
APPROVED *W. E. Hanson*

B-24 1054

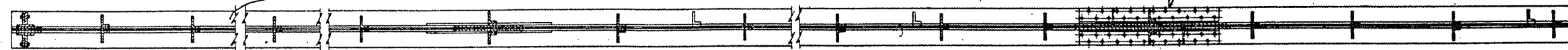


UNIT 1
SANGAMON RIVER BRIDGE

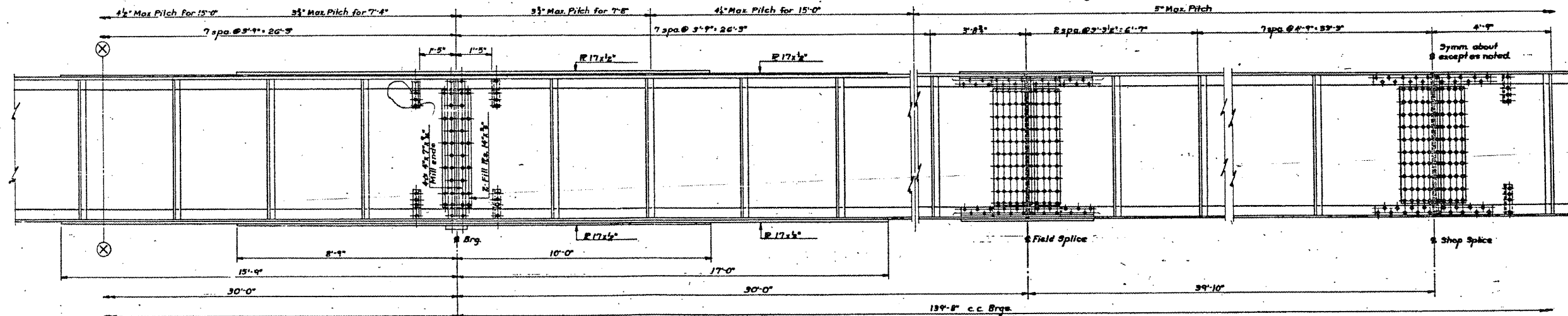
C-06-089-08
SN 084-0052
EXISTING BRIDGE PLANS
FOR INFORMATION ONLY
(NOT TO SCALE)



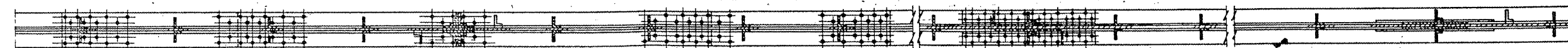
ELEVATION



PLAN OF TOP FLANGE



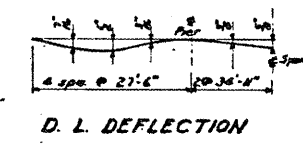
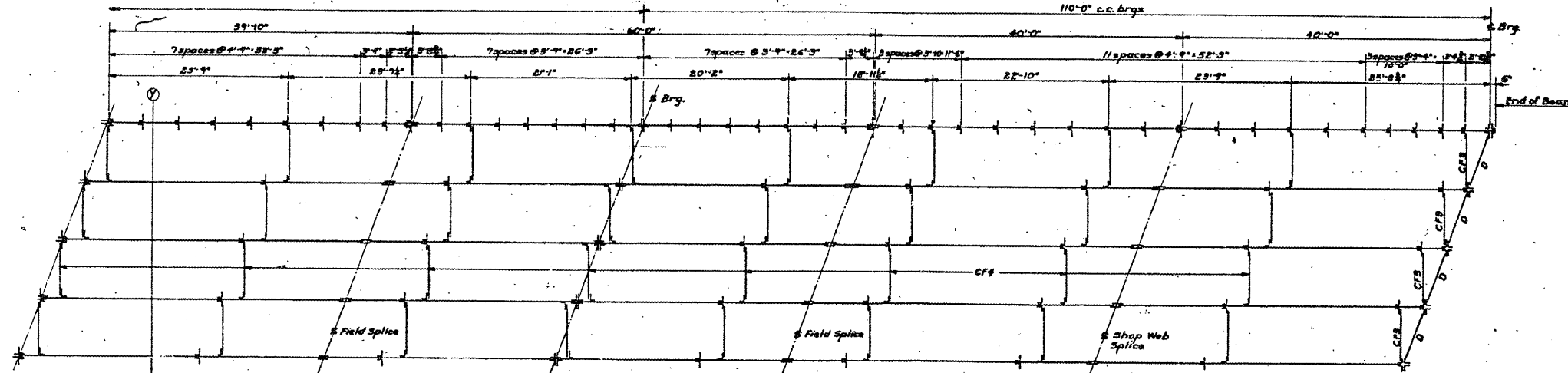
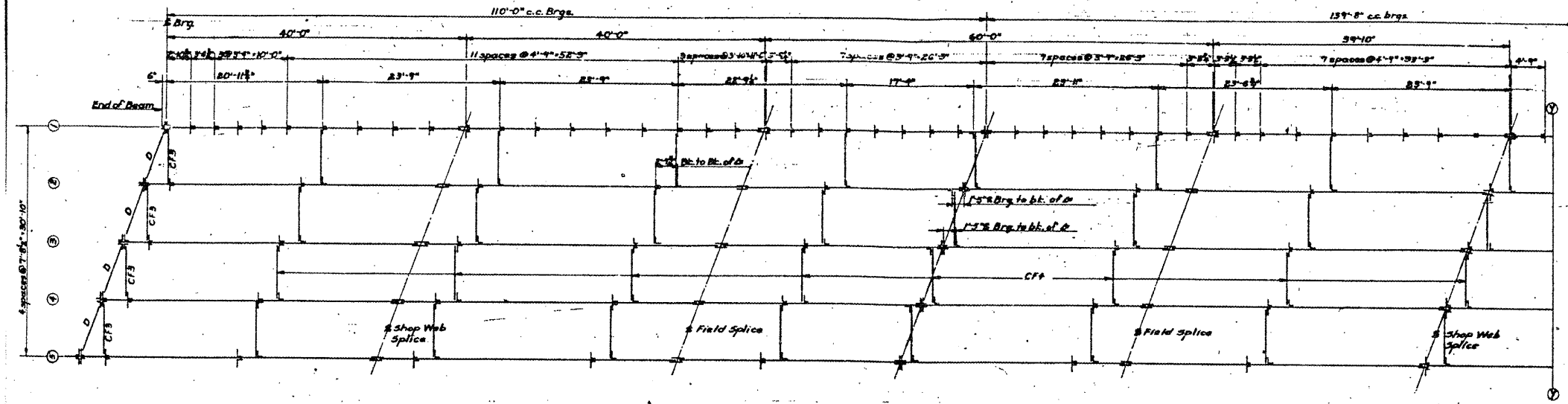
ELEVATION



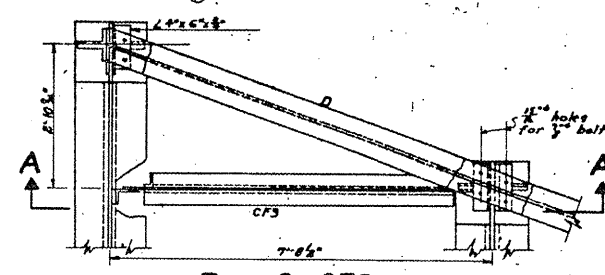
PLAN OF BOTTOM FLANGE

UNIT II
SANSAMON RIVER BRIDGE

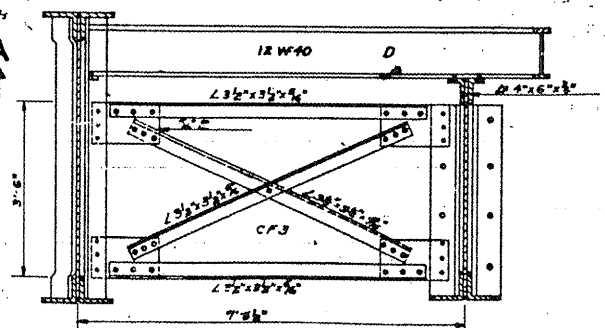
C-06-089-08
SN 084-0052
EXISTING BRIDGE PLANS
FOR INFORMATION ONLY
(NOT TO SCALE)



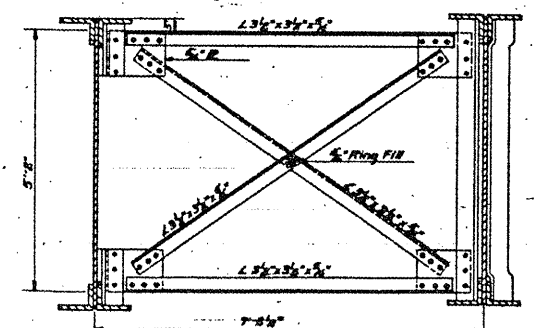
Structural Steel
Unit II 576,130 lbs.



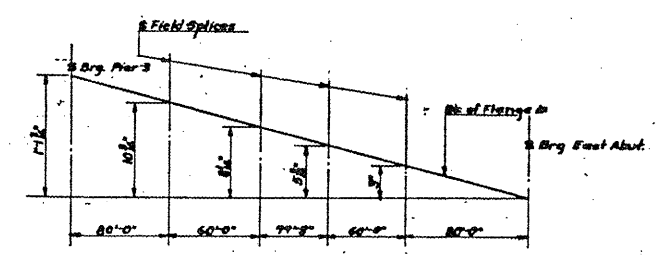
PLAN OF CF3



SEC. A-A



CF4



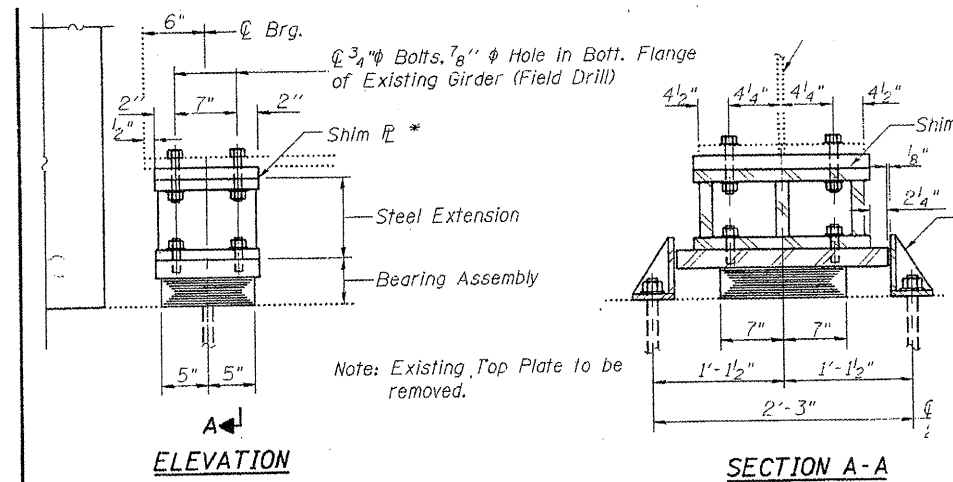
FABRICATION DIAGRAM

DESIGNED <i>M. J. Que</i>	EXAMINED <i>W. E. Hanson</i>
CHECKED <i>Paul P. Bueckle</i>	PASSED <i>Ed. [Signature]</i>
DRAWN <i>M. J. Que</i>	APPROVED <i>R. L. [Signature]</i>
CHECKED <i>[Signature]</i>	

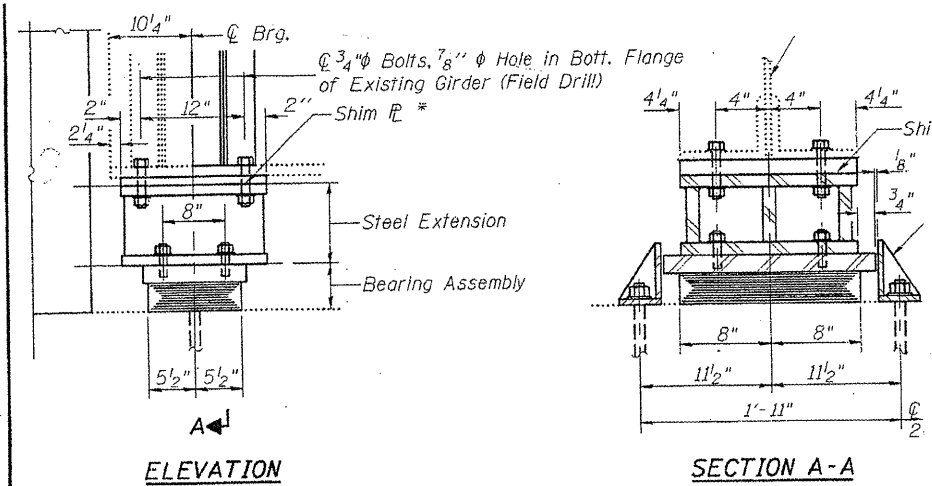
8-24 1950

UNIT II
SANSAMON RIVER BRIDGE

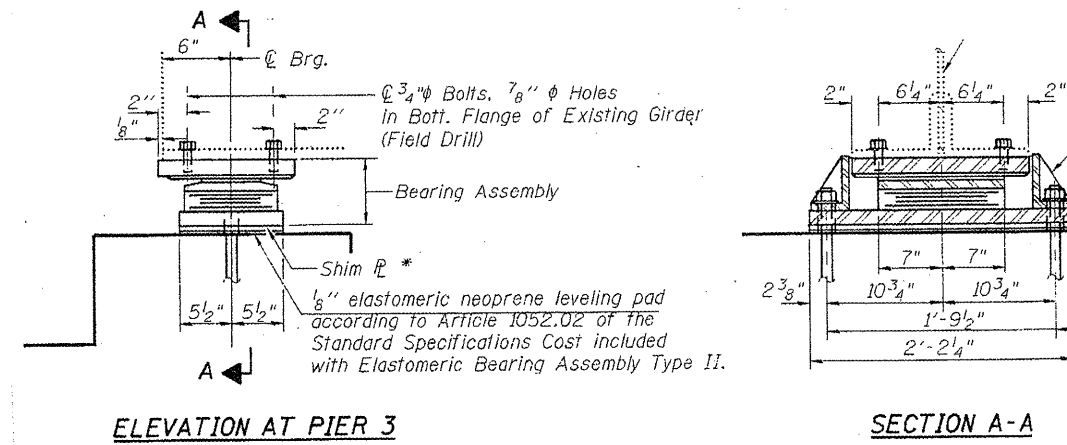
C-06-089-08
SN 084-0052
EXISTING BRIDGE PLANS
FOR INFORMATION ONLY
(NOT TO SCALE)



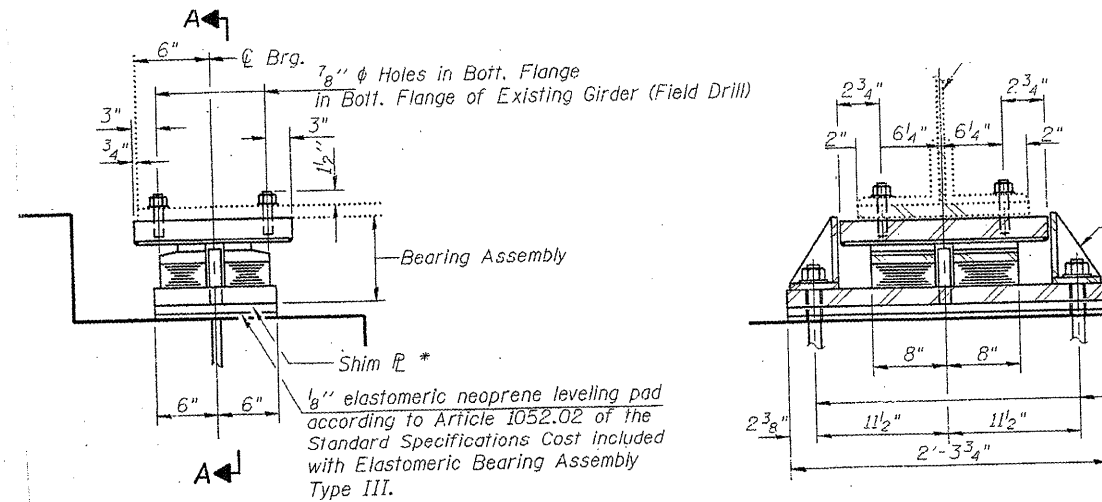
TYPE I ELASTOMERIC EXP. BRG. - EAST ABUT.



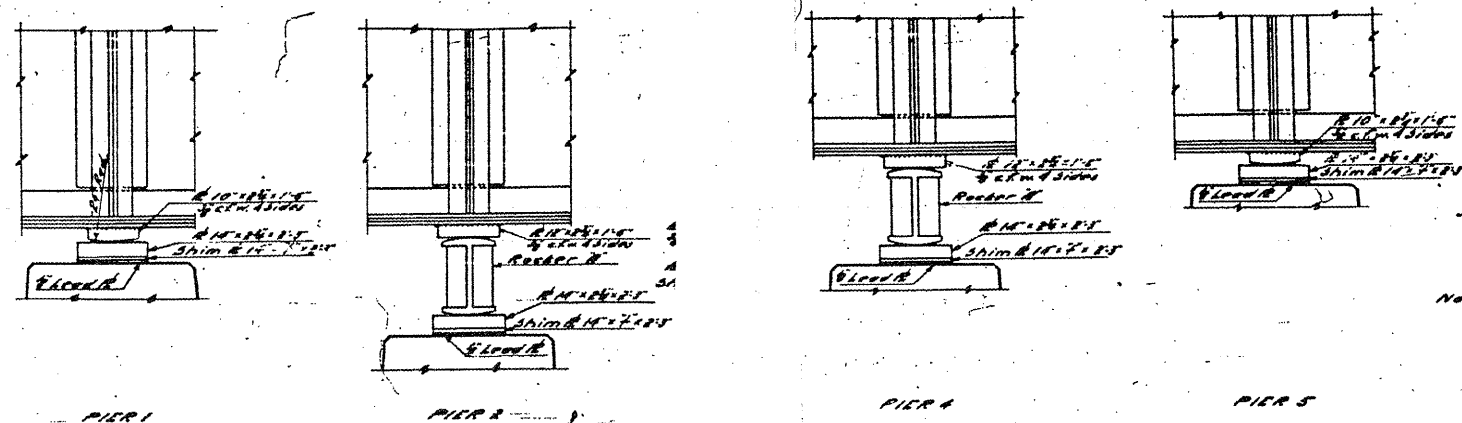
TYPE I ELASTOMERIC EXP. BRG. - WEST ABUT.



TYPE II ELASTOMERIC EXP. BRG.



TYPE III ELASTOMERIC EXP. BRG.



C-06-089-08
SN 084-0052
EXISTING BRIDGE PLANS
FOR INFORMATION ONLY
(NOT TO SCALE)