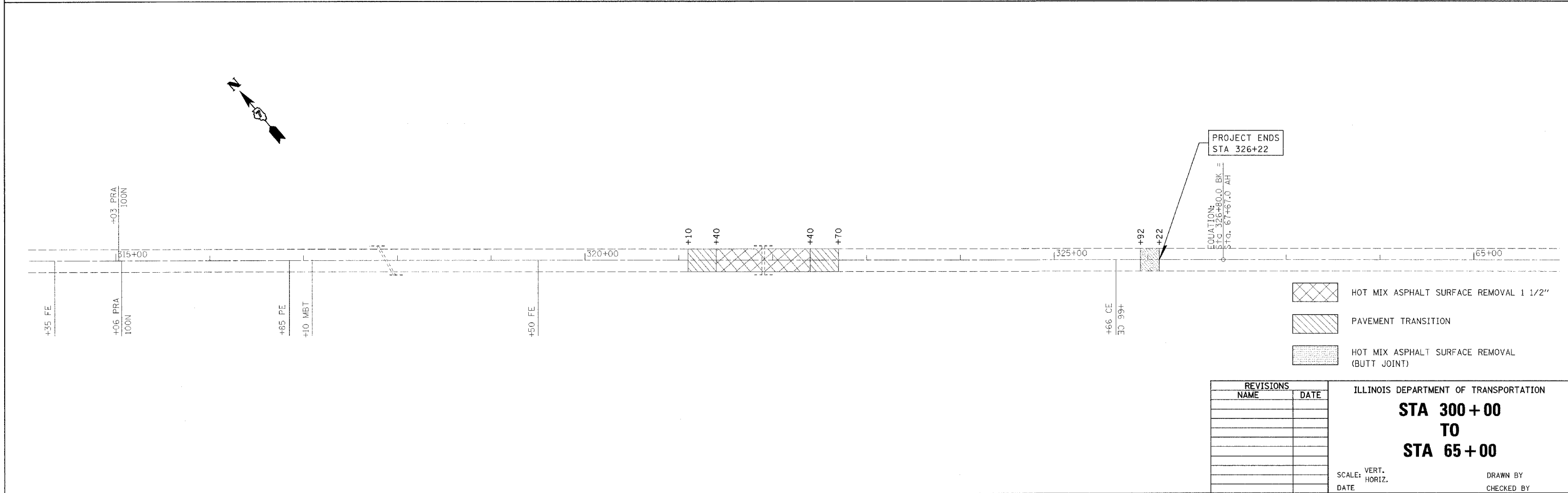
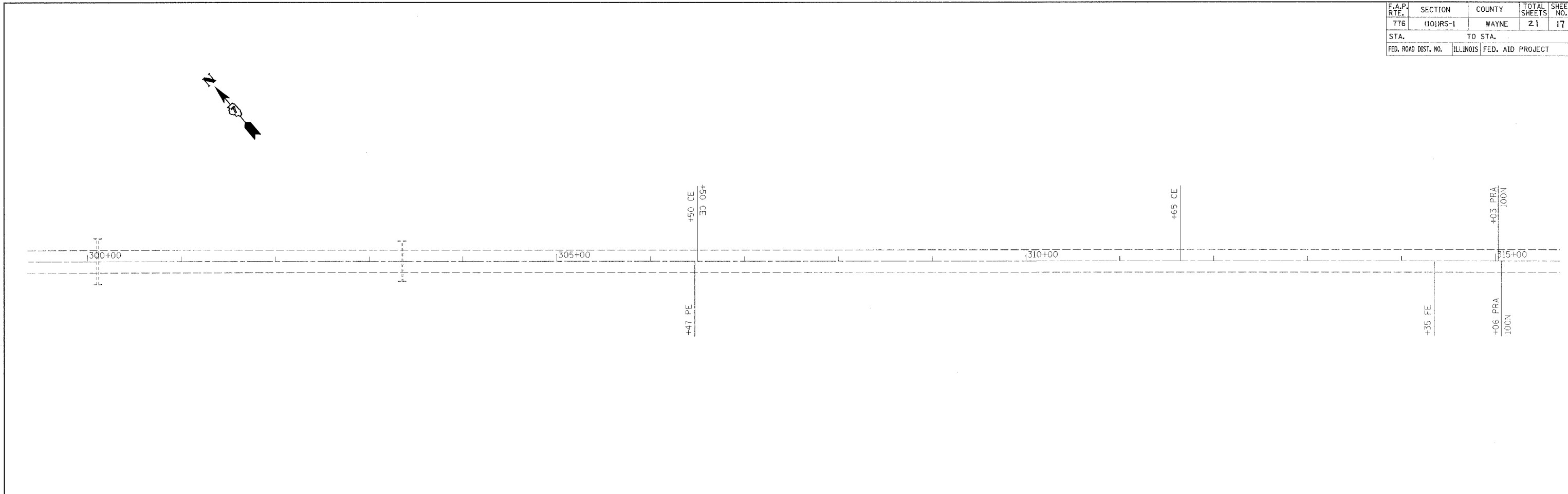


F.A.P. RTE.	SECTION	COUNTY	TOTAL SHEETS	SHEET NO.
776	(10)RS-1	WAYNE	21	17
STA.		TO STA.		
FED. ROAD DIST. NO.		ILLINOIS FED. AID PROJECT		

teaslejack
1/17/2008
c:\projects\74081\d00605pa.dgn
PS 11



- HOT MIX ASPHALT SURFACE REMOVAL 1 1/2"
- PAVEMENT TRANSITION
- HOT MIX ASPHALT SURFACE REMOVAL (BUTT JOINT)

REVISIONS	
NAME	DATE

ILLINOIS DEPARTMENT OF TRANSPORTATION
**STA 300 + 00
TO
STA 65 + 00**

SCALE: VERT. _____
HORIZ. _____

DATE _____ DRAWN BY _____
CHECKED BY _____

PLOT DATE = 1/17/2008
PLOT SCALE = 50/800
USER NAME = teaslejack