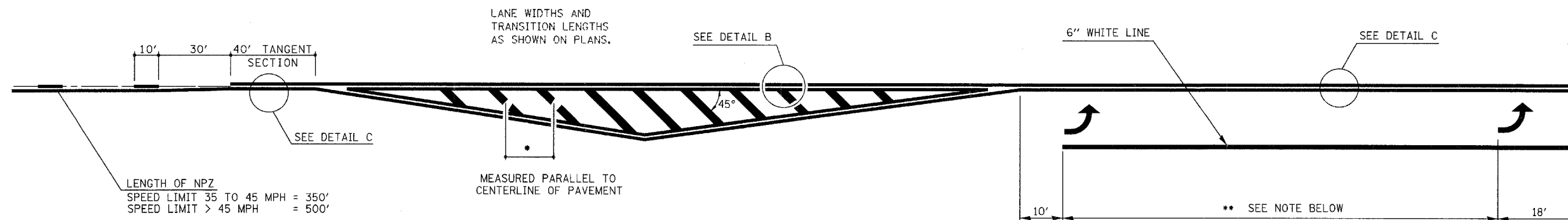


TYPICAL CENTERLINE, NO PASSING ZONE LINE (NPZ) & EDGELINE MARKINGS
2-LANE PAVEMENT



LENGTH OF NPZ
SPEED LIMIT 35 TO 45 MPH = 350'
SPEED LIMIT > 45 MPH = 500'

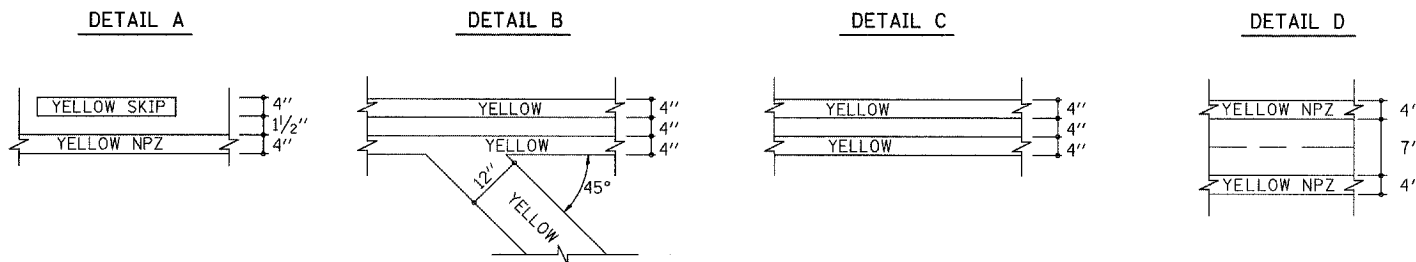
***DIAGONAL SPACING**

SPEED LIMIT	< 30 MPH	= 15'
SPEED LIMIT	30 TO 45 MPH	= 20'
SPEED LIMIT	> 45 MPH	= 30'

** PLACE THE FIRST ARROW EVEN WITH THE BEGINNING OF THE TURN BAY.
PLACE ANOTHER ARROW 18' BACK FROM THE STOP BAR. IF REQUIRED,
ADD ADDITIONAL ARROWS TO MAINTAIN A MAXIMUM OF 80' SPACING.

NOTES:

1. OMIT EDGELINE THRU SIDE ROADS.
2. TAPER RATES, LANE WIDTHS, AND STORAGE LENGTHS AS SHOWN ON THE PLANS.
3. WHEN MEDIANS ARE PRESENT, PLACE A SINGLE YELLOW STRIPE AROUND ITS PERIMETER.



NOT TO SCALE

REVISIONS	
NAME	DATE
MMO	12-99
DRM	08-04

ILLINOIS DEPARTMENT OF TRANSPORTATION
TYPICAL APPLICATION OF PAVEMENT MARKINGS
SHEET 1 OF 2

SCALE: VERT. _____ DRAWN BY _____
HORIZ. _____ ISSUED: 05-06-96 CHECKED BY _____

FILE NAME = c:\projects\74135d\shd\details.74135.dgn	USER NAME = skwrtzrw	DESIGNED - DRAWN -	REVISED - REVISED -
PLOT SCALE = 50.0000' / 1"	CHECKED -	REVISED -	REVISED -
PLOT DATE = 3/21/2008	DATE -	REVISED -	REVISED -

STATE OF ILLINOIS
DEPARTMENT OF TRANSPORTATION

PAVEMENT MARKING DETAIL

SCALE: NA SHEET NO. 1 OF 2 SHEETS STA. TO STA.

F.A.P. RTE. 774	SECTION 107ZRS-3	COUNTY EFFINGHAM	TOTAL SHEETS 18	SHEET NO. 16
CONTRACT NO. 74135				
FED. ROAD DIST. NO. ILLINOIS FED. AID PROJECT				