

**NORTH PARAPET**  
Looking North

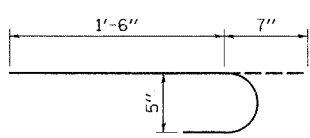
**BILL OF MATERIAL**

BAR	NUMBER OF BARS	SIZE	LENGTH	SHAPE
				d8(E)
s(E)	9	#5	3' - 11"	
h5(E)	4	#5	7' - 7"	
REINFORCEMENT BARS (EPOXY COATED)			POUND	80
CONCRETE SUPERSTRUCTURE			CU YD	0.3

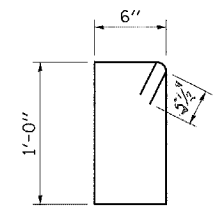
**STRUCTURAL REPAIR**

Cost Included In Structural Repair of Concrete (Depth <5'>)

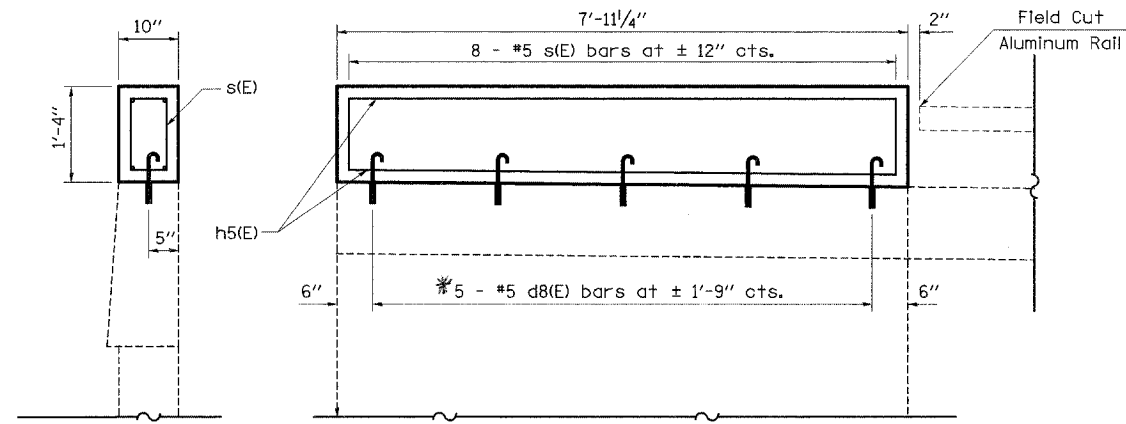
PATCH NUMBER	STATION	AREA SQ. FT.
1	720+75	3.0
2	720+92	8.0
3	721+76	3.0
4	722+03	7.0
5	723+10	2.0
6	723+28	11.0
Total		31.0



**BAR d8(E)**



**BAR s(E)**



\* Epoxy Grouted Bars in accordance with Art. 584 of the Standard Specs.

**BRIDGE APPROACH WINGWALL IMPROVEMENT DETAIL**

Northwest Wingwall Only