

STATE OF ILLINOIS  
DEPARTMENT OF TRANSPORTATION  
DIVISION OF HIGHWAYS

**PROPOSED  
HIGHWAY PLANS**

FAP ROUTE 774 (ILL 33)  
SECTION (1-1MFT,1-WMFT,104Z,104)RS-2

EFFINGHAM COUNTY

C-97-079-07

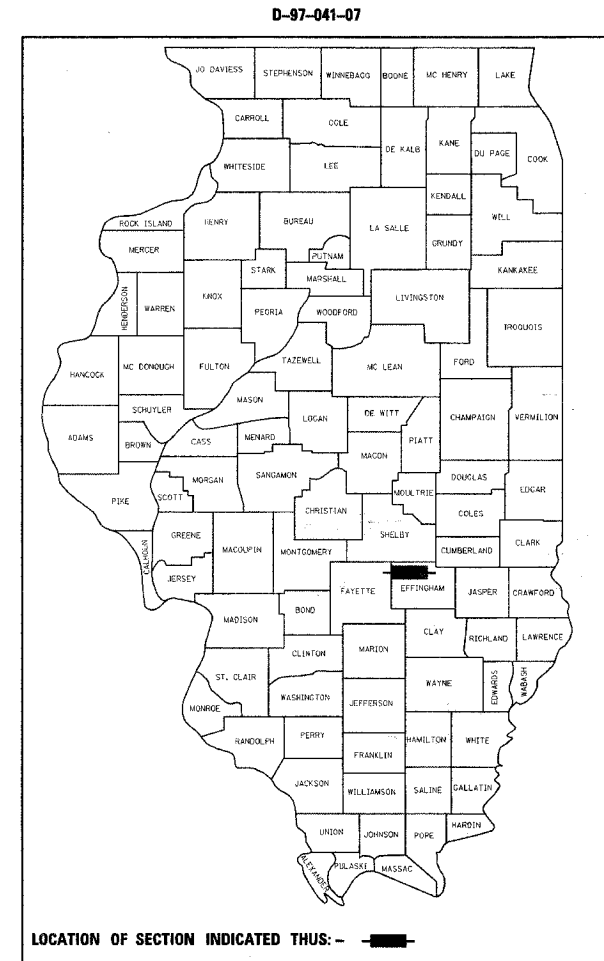
F.A.P. RTE.	SECTION	COUNTY	TOTAL SHEETS	SHEET NO.
774	*	EFFINGHAM	33	1
FED. ROAD DIST. NO.	ILLINOIS	CONTRACT NO. 74251		

• (1-1MFT,1-WMFT,104Z,104)RS-2

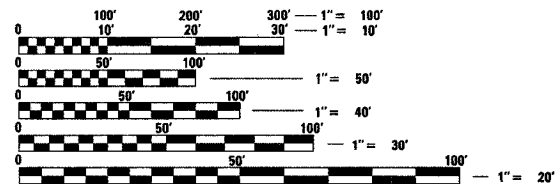
FOR INDEX OF SHEETS, SEE SHEET NO. 2

OMISSIONS

RAILROAD CROSSING: STA 160+35 TO STA 160+45  
SN 025-0030: STA 180+20 TO STA 182+55  
SN 025-0031: STA 303+40 TO STA 304+30



FAP 774  
IL. ROUTE 33  
SECTION (1-1MFT, 1-WMFT, 104Z, 104)RS-2  
EFFINGHAM COUNTY  
BEGINS STA 0+04



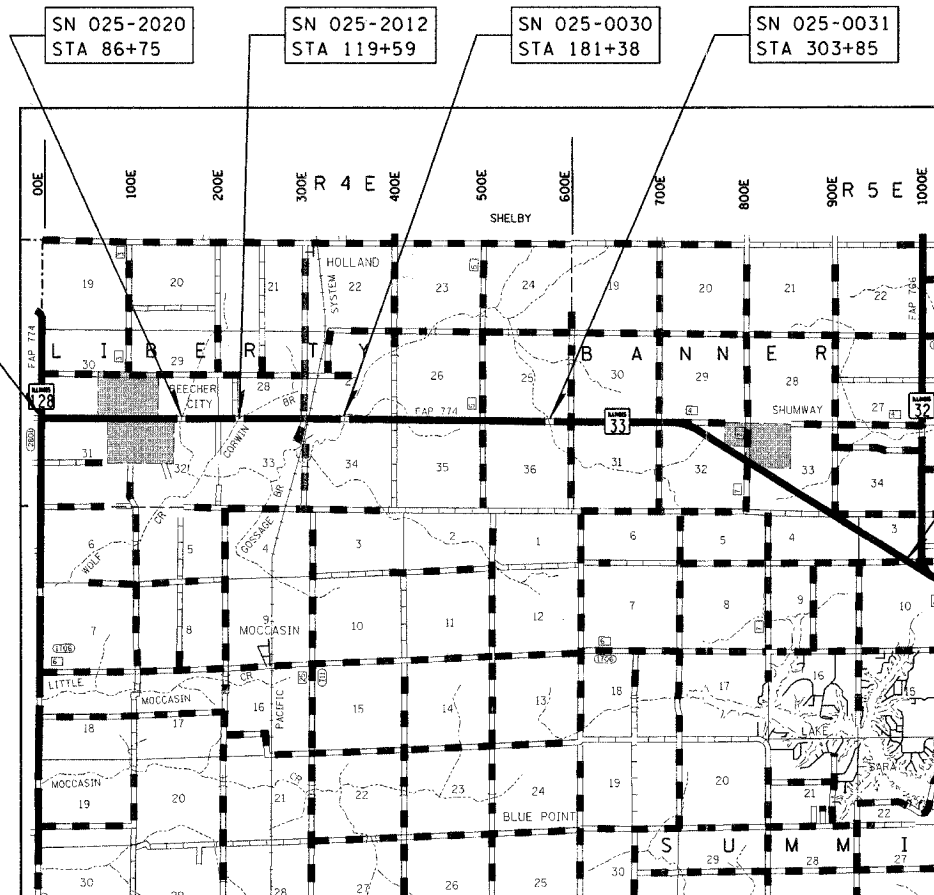
FULL SIZE PLANS HAVE BEEN PREPARED USING STANDARD ENGINEERING SCALES. REDUCED SIZED PLANS WILL NOT CONFORM TO STANDARD SCALES. IN MAKING MEASUREMENTS ON REDUCED PLANS, THE ABOVE SCALES MAY BE USED.

J.U.L.I.E.  
JOINT UTILITY LOCATION INFORMATION FOR EXCAVATION  
1-800-892-0123  
OR 811

PROJECT ENGINEER: MARK DAUGHERTY  
PROJECT MANAGER: BRIAN J. BIERMAN

CONTRACT NO. 74251

ADT (2007) = 3400



FAP 774  
IL. ROUTE 33  
SECTION (1-1MFT, 1-WMFT, 104Z, 104)RS-2  
EFFINGHAM COUNTY  
ENDS STA 542+35

STATE OF ILLINOIS  
DEPARTMENT OF TRANSPORTATION  
DIVISION OF HIGHWAYS

SUBMITTED March 28 20 08

*Christine M. Reedy*  
DEPUTY DIRECTOR OF HIGHWAYS, REGION ENGINEER

*May 9, 20 08*  
*Eric E. Harwood*  
ENGINEER OF DESIGN AND ENVIRONMENT

*May 9, 20 08*  
*Christine M. Reedy*  
DIRECTOR OF HIGHWAYS, CHIEF ENGINEER

**PRINTED BY THE AUTHORITY  
OF THE STATE OF ILLINOIS**

GROSS LENGTH = 54231 FEET = 10.27 MILES  
NET LENGTH = 53896 FEET = 10.21 MILES